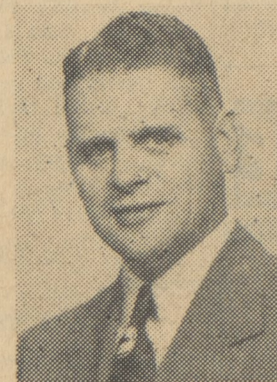
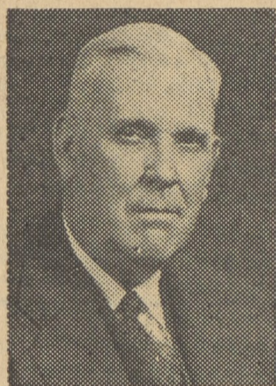




W. B. JETER
Vice-President



FRED ECK
Ass't Vice-President



C. W. SPACE



H. L. TITMAN



A. C. DEVENS



DOLORES ADAMSHICK

The Officers, Staff and Advisory Committee of
The Dallas Branch
Miners National Bank Of Wilkes-Barre



NANCY REESE

Extend an invitation to all of you to attend the formal celebration of our new affiliation.

Wednesday, May 20
8 a.m. to 2 p.m.



RACHEL REES



GOLDIE IDE

These members of the Advisory Committee will be on hand to welcome you . . .

- W. B. JETER
- FRED ECK
- A. C. DEVENS
- C. W. SPACE
- H. L. TITMAN

And there will be . . .

- Gifts for the Ladies
- Valuable Prizes



CARRIE FOOTE



LORRAINE KELLER



W. H. BAKER



R. W. BROWN



MRS. FRANK DAVIES