

DIAL PHONES ARE ON THE WAY!



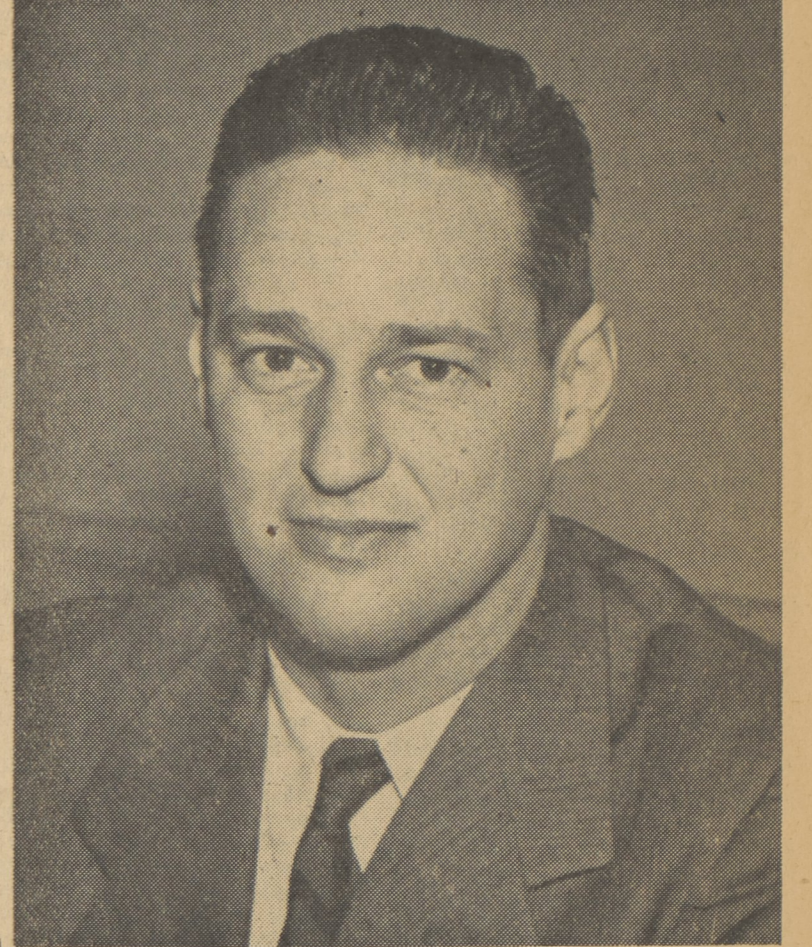
Complete down to the final detail, the main accounting department of Commonwealth Telephone Company started to function in Dallas on Monday morning, two weeks ahead of schedule.

This spacious well-lighted room was completely empty and unfinished a week ago, but now hums with the activity of more than thirty employees who will be permanently employed in Dallas following the transfer of Commonwealth Telephone Company to its main office on Lake Street.

Beyond the accounting department are the billing, engineering, drafting and plant maintenance

offices. The building is completely air-conditioned. Large windows provide ample natural light requiring artificial light only on dull days. A maple furnished dining room

complete with electric range, refrigerator and other equipment is provided just across the hall for those who carry their own lunches, want a snack or cup of coffee.



A. J. SORDONI, Jr., President

Company Has Grown From 6000 Stations In 1928 To 23,000

Constant Improvements Have Been Made Since Entering Local Field In 1928

Since the Commonwealth Telephone Company was acquired by Senator Sordoni in January 1928 together with the Luzerne Telephone Company in 1929 and the County Telephone Company in 1935, which in September 1950 were merged to form the new Commonwealth Telephone Company, constant improvements have been made to rehabilitate and extend facilities. Old chestnut poles have been replaced with creosoted long leaf yellow pine poles—cable and copper wire have replaced the iron wire throughout the system. In 1928 there were approximately 6,000 stations; today there are over 23,000 stations with approximately 2,000 deferred applications, the installation of which are continually being made.

In 1928, the company's exchanges were manually operated; today, of its thirty-seven exchanges, twenty-six provide dial service with four more exchanges planned for dial conversion this year. Since the end of World War II, \$3,000,000 has been spent on improvements, dial conversions and extensions, and for the 1951-'52 period, an additional \$1,500,000 will be spent for the dial conversion of Dallas, Dushore, Center Moreland and Orangeville and for the construction now underway, of a new Main Office and district office on Lake Street, Dallas.

The company's phenomenal growth can be attributed to many factors among them being its progressive spirit of plant and service improvements providing satisfied subscribers with metropolitan service "second to none." Recognition and deep appreciation is given the management and employees of The Bell Telephone Company. They have always been not only willing but anxious to co-

operate with the independent telephone companies helping them to solve their engineering problems, giving the benefit of their finest engineering talent without charge. Without the Bell Telephone Company's help the independent companies would be as they formerly were just country lines instead of providing the same type of metropolitan service as the public expects.

Then too, Commonwealth has been quick to seize upon the social evolution of the past few decades which, reversing the trend of population for more than a century, has found people moving from the cities into the suburbs. The growing population, improved transportation, the decentralization of industries, the automobile and good roads have brought about this shift in population. Good telephone service has been the final key in unlocking to countless thousands of families the gateway to more gracious unfettered living.

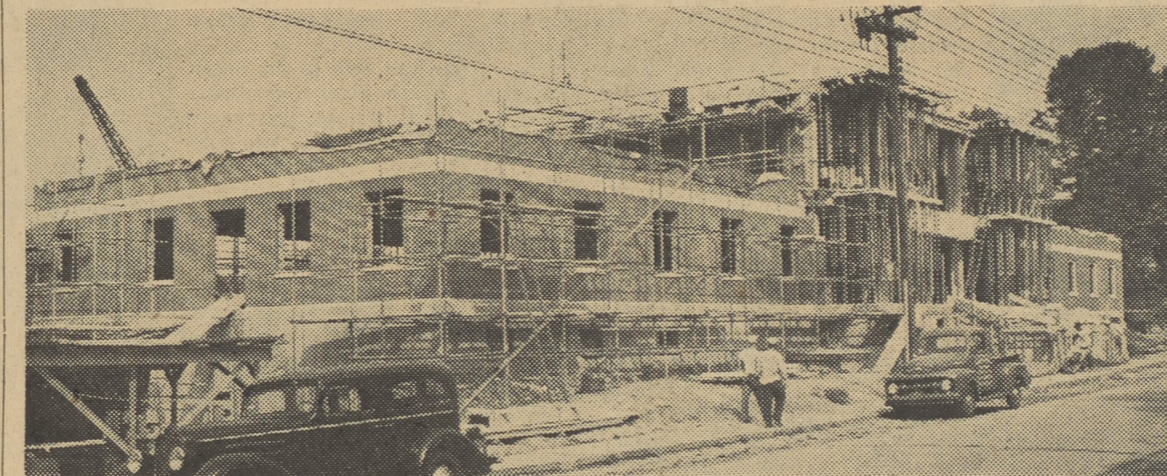
This is the story of the men, who fashioned that key—who, with aggressive, far-planning management are building not for today alone but for the needs and expansion of the Commonwealth Telephone Company in the many years ahead. It is the story of our men who, in fair weather or storm, work on the lines that your calls may go through. It is a tribute to their loyal service.

In Bermuda

Rev. Robert D. Yost, pastor of Shavertown Methodist Church, left Thursday at noon from the Avoca Airport for LaGuardia Field and flew to Bermuda for a ten day trip. In his absence District Superintendent Rev. Roswell Lyons will occupy the pulpit Sunday.



During Construction Days Last Summer



Billing Department In New Headquarters



This is a section of the cheerfully lighted billing office equipped with the most modern billing machines. Henceforth telephone subscribers through the 6,000 square mile area served by the Commonwealth

Company will receive their bills in envelopes bearing a Dallas postmark.

More than 3,000 pieces of mail will go out of the main office daily and an equally large volume

will be received, another convincing reason why Dallas Post-office should occupy its own modern building to keep pace with the expansion of private enterprise here.

Adequate Provision Is Made In New Building For Future Growth

Thirty Of Its Thirty-Seven Exchanges Will Provide Dial Service This Summer

Designed by Lacy, Atherton and Wilson, the New Commonwealth Building on Lake Street is a thing of beauty as well as utility.

Its two-story colonnaded entrance on Lake street is flanked on either side by a curving brick and stone stairway leading to a stone landing. Here the United States Geodetic Survey has placed a bronze marker revealing the elevation as 1141.978 above sea level and also giving the exact compass points North, South, East and West.

From the landing, broad steps lead to the entrance to the foyer where customers can transact their business with the company at a circular counter.

To the right of the desk are the offices of John Landis, manager of the Dallas District, and to the left are the offices of Senator Andrew J. Sordoni, chairman of the Board; Andrew J. Sordoni Jr., president, and Harold Payne, vice-president and general manager.

Interior decoration throughout is in some shade of green ranging from deep Williamsburg green on the paneled interiors of the executive offices to lighter brighter shades in the engineering, accounting, administrative, and commercial offices, first floor.

The western side of the entire first floor, has an exposure almost entirely of glass, houses the accounting, engineering, billing, and plant maintenance departments. Corridors are of buff tile.

Also on the first floor are retiring rooms with mirrored walls. A thick glass powder table backed with mirrors, stretches along one side of the women's retiring room.

There is also a maple furnished dining room, with electric stove, refrigerator and other accommodations for employees who choose to have their lunches there.

The first aid room has a chiropractic table where any employee

may receive adjustments twice a week at company expense by a trained practitioner.

The second floor with the exception of the area housing air conditioning equipment, a maintenance office, and a vault room for company records, will be taken up entirely by new dial equipment for the Dallas district when it is cut over this year.

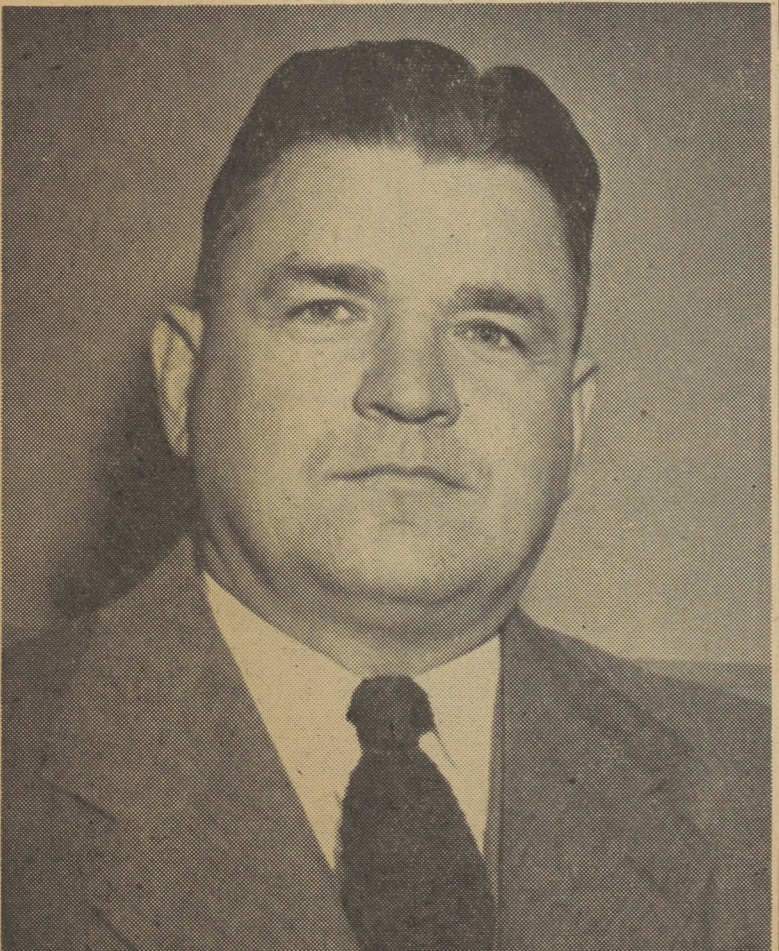
This compact equipment room on the western side of the building is completely encased in glazed tile for ease of maintenance and to prevent dust from harming the delicate equipment that will be housed there.

There are six rows of fluorescent lights, each row containing sixteen fixtures, producing 55 to 60 foot candles at all points where maintenance men may be called upon to work on the dial boards.

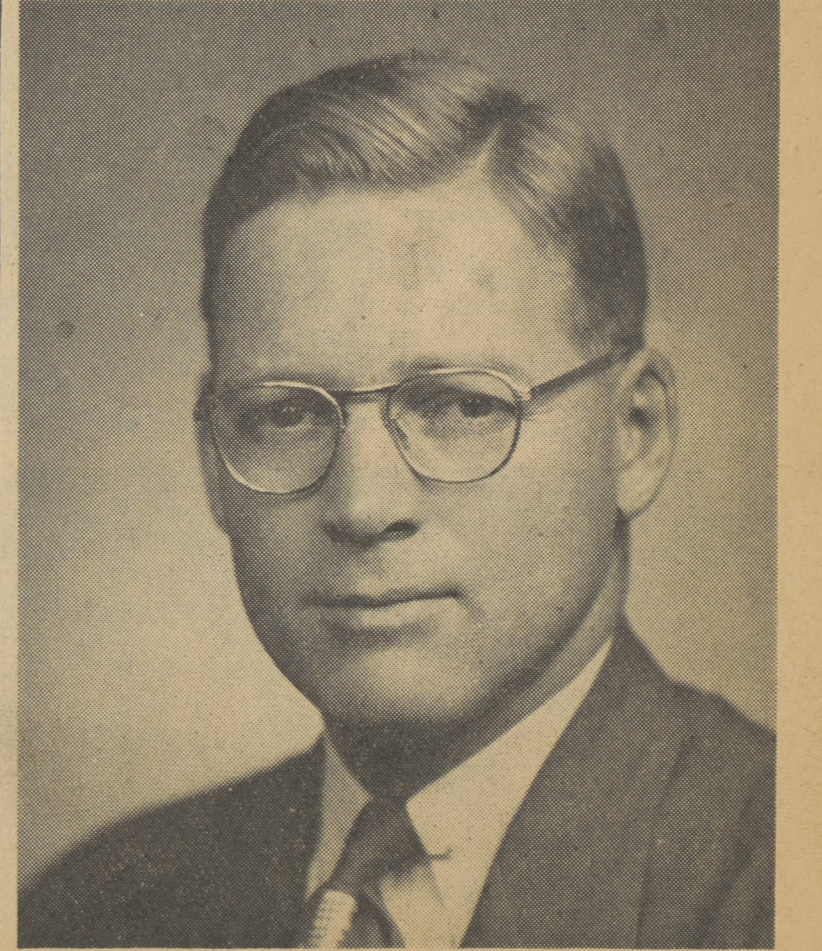
Foresight of Commonwealth management is evidenced here, in a provision for future growth of the community. There are at present 650 lines running into the old Dallas central office. The raw equipment room will have 1,500, with facilities for the accommodation of 3,000 more if necessary BUT provision has also been made so that with some additional construction on either side, 9,000 more lines can be handled.

Basement of the building houses supply rooms and presently stores more than \$80,000 worth of dial phones which will be used in the conversion of the Dallas district to dial. Also in the basement are the two mammoth stoker fed boilers that heat the building, a garage for thirteen trucks and shop for maintenance of equipment.

Behind the building is the brick cable storage shed with access to the Lehigh Valley railroad, and storage facilities for poles. Concrete parking and unloading areas surround the entire plant.



HAROLD PAYNE, Vice-President and General Manager



JOHN LANDIS, Dallas District Manager