

Legal—

SHERIFF SALE
Friday, January 11, 1952
at 10 o'clock A. M.
by virtue of a writ of F. Fa No. 39 December Term 1951, issued out of the Court of Common Pleas of Luzerne County, to me directed, there will be exposed to public sale by vendue or outcry to the highest and best bidders, for cash, in Court Room No. 1, Court House, in the City of Wilkes-Barre, Luzerne County, Pennsylvania, on Friday, January 11, 1952 at 10 o'clock in the forenoon of the said day, all the right, title and interest of the defendants in and to

All that lot of land in Wilkes-Barre City, Luzerne County, Pennsylvania, described as follows: Beginning at a point on Murray St. at corner of land formerly of Frank McDade; thence N. 51 degrees 30 feet W. 175 feet; thence N. 26 degrees 45 feet E. 47.5 feet to a corner; thence S. 51 degrees 30 feet E. 175 feet to Murray Street; thence along said Street S. 26 degrees 45 feet W. 47.5 feet to Beginning. Excepting and reserving coal and other minerals etc.
Improved with a frame double dwelling known as No. 21 Murray Street, Wilkes-Barre, Pennsylv.

vania.
Taken in execution at the suit of George L. Fenner Jr. Assignee etc. vs. Helen Radaszewski Maloney and William Maloney, her husband.
ROBERT SHERROCK, Sheriff
GEORGE FENNER, SR.
Attorney

Estate of Alphareta E. Morris, late of Kingston Township Pennsylvania. All persons having claims or demands against the estate of said decedent are requested to make known the same, and all persons indebted to said decedent are requested to make payment to Ira D. Morris.

Know Your Neighbor
(Continued from Page One)

once more doubling the space and affording a first floor 48 x 105, with a complete basement for work and storage beneath.

Further expansion is still possible toward the rear of the lot. Pete thinks eventually he might use that space for drain tile and chimney crocks.

Pete looked at his paint shelves. He said, "There's more stock right on those shelves than I carried in the whole store when we opened."

Most young fellows won't work as hard these days as they did when Pete was a boy and anxious to get started, he thinks. If he were to be asked what advice he would give to a young man, he says he believes he would tell him to get married young and to buy a house right away so that he has something to work for and a real stake in life.

Pete batted at a small cereal fly. "Oh-Oh," he said, "That's the first one I've seen this year. I'll have to look at the sunflower seeds."

The Dallas Hardware does a landoffice business in wild bird seed during the winter. Last year customers bought sunflower seed by the ton, and Pete threw in the cereal flies. Extra rations for the birds are very nourishing.

With everybody in Dallas claiming that one pair of cardinals which travels from feeder to feeder, business is brisk.

Vital statistics show that Lawrence Updyke was born in Courtdale, September 10, 1911, son of Ralph and Tressie Updyke, attended grade school in Courtdale, high school in Luzerne; graduated in June, 1929, and went right out and got a job.

In 1934 he married Edna Evans, of Falls. There are two children, Bradley, eleven, and Bonnie, five.

There was a big settlement of Updykes in Luzerne and Courtdale, as Pete's grandfather came back East from Ohio when a small boy, upon the sudden death of his father.

And now the Back Mountain is populated with Updykes, a definite asset to the community.

Open Insurance Office In Dallas

Arthur and Ernest Gay will open their new Farm Bureau Mutual Insurance office Monday in the Garlinger Building on Lake Street.

Mr. Gay and his son have been associated with the Farm Bureau companies for the past several years and more recently maintained their office in Luzerne, but area is the coming community of the county.

For many years before becoming associated with Farm Bureau, Arthur Gay was one of the outstanding Holstein dairymen and fruit growers in Luzerne County. He has been active for years in Luzerne County Agriculture Extension Association and with James D. Hutchison, county agent, was largely instrumental in establishing NEPA Artificial Breeding Association of which he was first president.

Ernest Gay was one of the outstanding poultrymen of the county, growing as many as 50,000 broilers at a time on his farm at Sutton Creek before devoting all of his time to the insurance business.

The Post welcomes the return of father and son to the Back Mountain business community.

MOONLITE Open-Air Theatre

on Shoemaker Ave., between West Wyoming and Swoyerville WEST WYOMING, PA.
ADMISSION 50c tax included
FRIDAY and SATURDAY
"Thieves Highway" starring Richard Conte and Valentina Cortesa
Somebody is going to get hurt! Don't miss this suspenseful, thrill-packed drama.
Plus Cartoon
SUNDAY and MONDAY
"Gun Fighter" with Gregory Peck and Helen Westcott
Bursting with action, suspense mounts and mounts to the breaking point.
Cartoon

Elementary Schools To Give Programs

Each classroom in Dallas Borough-Kingston Township elementary schools will have a party Friday afternoon until dismissal at 2:00. They will all have ice cream and cookies. Boys and girls will exchange gifts.

Formal Christmas programs are similar for each school but the way in which the schools will present their programs will differ.

Dallas Borough pupils will present their program in the auditorium at 9 a. m. Friday, December 21.

Shavertown School pupils will give a program of songs and playlets before the Parent Teachers Association at 8 p. m. Monday, December 17th.

The Trucksville School program will be held in individual rooms starting at 9 December 21. The program begins in Miss Burgess' First Grade room at 9. Each grade's program will last about thirty minutes. Approximate starting times are Grade I at 9; Grade II at 9:30; Grade III at 10; Grade IV at 10:30; Grades V and VI at 11.

Parents, relatives, and friends are invited to all programs.

Lewis Shaver Lies At Huntsville

Pallbearers of Lewis Shaver, Dallas, whose obituary appeared in the Dallas Post last week, were Milton Culp, Charles Elston, Harvey Moss, Elmer Major, John Dargay, and John Headman.

Flower carriers, nieces of Mrs. Shaver, were Elma Major, Mildred Major, Patricia Clark, Mrs. Carlo Looete, Mrs. Emerson Evans, Mrs. Wendell Jones, and Mrs. Harry Howells.

Burial was in the family plot at Huntsville Cemetery, following services by Rev. C. H. Frisk and Rev. Paul Keppel Saturday afternoon at 2:30.

Westmoreland Essays

(Continued from Page 1)
Assembly. Many people were encouraged at the end of the war to come to Westmoreland and settle down to a new life. Because of the people who stood up for what they thought was right and what they believed in, Westmoreland was born. That's the kind of thing which makes America the great land she is and always will be.

Icebergs are always formed of fresh water.

Get Your Shoes Repaired FOR LESS IN DALLAS

SPECIAL
Children's Half Soles (According to Size) \$1 to \$1.35
Women's Half Soles \$1.35
Ladies' Top Lifts 25c (Spike Heels Only)
Men's Half Soles \$1.99
Cash 'N Carry up

VISIT OUR NEW SHOE DEPT.
Children's Shoes
Men's Work Shoes
Men's Dress Shoes
Savings of 50c up to \$2.00
Dallas Shoe Repair
9 MAIN ST. DALLAS

SANTA CLAUS

will be at our store
Friday and Saturday
December 14 and 15
FROM 7 P. M.
UNTIL 8 P. M.

Come bring the children See our line of Toys, Tree Decorations, Cards, Candles, Candy and Household items.

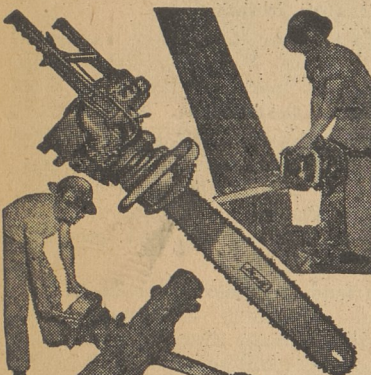
Lehman Supply

GEORGE L. STOLARICK
Lehman, Pa.
OPEN EVERY NIGHT
TO 8 P.M. 'TIL CHRISTMAS



4 Times FASTER than Hand Sawing
Mall CHAIN SAWS
The powerful, lightweight Mall Model 7 Chain Saw is the faster, easier way to cut cordwood, clear land and fell, buck and limb large and small timber. Automatic clutch prevents stalling engine. Engine starts easily in all kinds of weather—uses very little fuel. All controls are located on the handle bars for ease of operation. Chain may be indexed for angle cuts. The Model 7 Chain Saw is a completely self contained unit that may be carried wherever man can walk.

Come In and See This Saw Today



The Best Cutting Lightweight Chain Saw on the Market!

MODEL 10 Mall CHAIN SAW
FOR ONE OR TWO MAN USE

Save time and effort felling, bucking, and limbing trees; cutting fence posts, cordwood, cross ties and firewood.

The Mall Tool Company—pioneers in designing, engineering and manufacturing Gasoline Engine, Electric and Pneumatic Chain Saws—since its years of experience with this powerful, new lightweight gasoline engine Chain saw that incorporates important money-saving features not available in other makes of chain saws.

Easily handled by one man on horizontal, vertical or any angle cut. Indexed to any desired angle for felling or bucking. Lightweight die-cast magnesium construction makes it easy to carry. Powerful 2-cycle Gasoline Engine • Interchangeable Gear Ratios—high speed for big trees, high speed for small ones • Round Nose Bucking Bar makes it possible to start out with tip of round end; also permits felling and bucking trees twice the bar's length. Foolproof float-type carburetor keeps engine running for angle cuts • Speed Control by throttle on right handle and on handle cross-bar (for one-man operation) • Quick detachable tailhook furnished with round nose bucking bar at no extra cost.

Lighter Handier More Powerful



Mall Model 12A One-Man CHAIN SAW
18", 24", 30", 42" capacities
Unbelievably light and easy to handle • Makes short work of the toughest timber • Quick one-hand NO KICK rewind starter • 2-cycle, air cooled Gasoline Engine • Chrome plated cylinder • Stall-proof clutch • Chain tensioning device • Built-in chain oiler • Finger-tip control • High speed cutting at any angle • 18", 24", 30", 42" Guide Plates are interchangeable • Bow Saw Attachment available. Other models up to 12 ft. in capacity.

Tune In The United Press News "On the Farm Front" Every Day at 12:55. 730 on Your Dial WHWL.

Charles H. LONG
SWEET VALLEY, PA.
Phones: 8421 or 8431

A Very Joyous Holiday Season To All
HECK CLEANERS

Order Early

Get Your Christmas Turkey from the man who grows the best.

all sizes dressed the way you want them. 10 to 20 lbs.

70c
oven dressed

CAPONETTES
4 to 6 pounds oven dressed

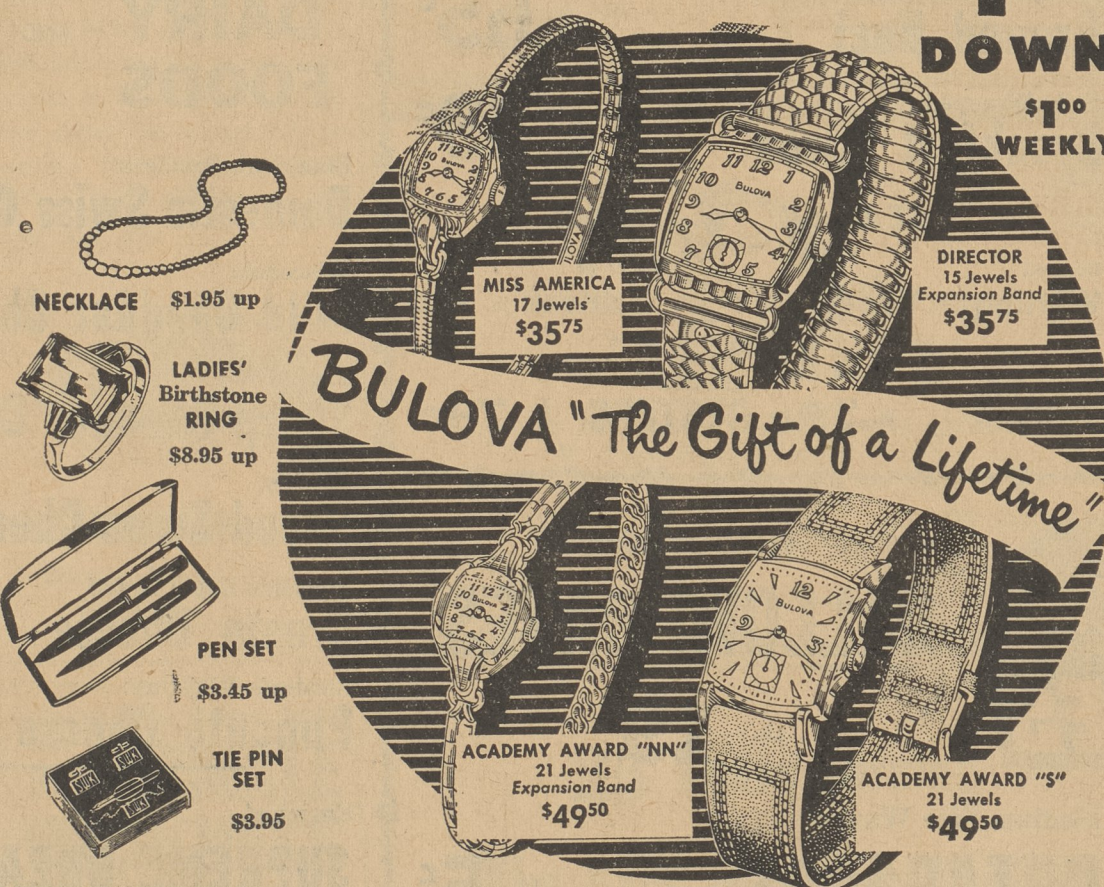
60c

HILBERT'S HATCHERY
38 years in business
BEAUMONT, PA.
Phone Harveys Lake 3422



ON THESE **CHRISTMAS SPECIALS**

\$100 DOWN \$100 WEEKLY



BULOVA "The Gift of a Lifetime"
DRESSER SETS from \$12.00
Blue White DIAMOND RING \$150.00
Others from \$37.50

See **Henry** your friendly Dallas jeweler
MAIN ST., DALLAS Phone 274-R-16

Evans REXALL DRUG STORE
The Little Store With the Busy Door

The Claus That Refreshes

SPECIAL 500 VOTES CIGARETTES \$2.10 Carton

SPECIAL 500 VOTES CANDY CANES 36 for \$1.49 You Save 31c

500 VOTES 1/2-gallon Breyers ICE CREAM \$1.25

Special 240 Votes OLD SPICE Shaving Lotion \$1.75 plus tax

SPECIAL 288 VOTES LIPT REFILL \$1.25 plus tax

Double Votes On All TOYS
Double Votes On All Christmas Cards 5c to \$1
The biggest most attractive line we have ever carried

THE 40 CONTEST LEADERS BOYS

John Gallagher
Larry Polachek
John Buchanan
Bill Kotyk
David Elston
Jack Lasher
Gerald Miller
Bob Nicely
Barry Landmesser
Emerson Evans

Larry Newhart
George Stolarick
Nile Lee Clark
Jack Chapple
Gary Harris
James Hoyt
Harry Montross
Ricky Pope
George Thomas
John Lewis

GIRLS

Shari Lynn Kitchen
Theresa Hudak
Betty Kay Williams
Joyce Ann Bellas
Sandra Lee Swire
Patsy Ann Hughey
Nancy Steidinger
Mary Lou Jones
Myra Berti
Ruth Tinsley

Phyllis Monko
Linda Woolbert
Ruth Croman
Mary Ann Johnson
Henrietta Hughes
Barbara Honeywell
Nancy Schuler
Carolyn Dietz
Louise Van Campen
Ronnie Ann Jerista

Watch for Standings Next Week
DOUBLE VOTES ON ALL REXALL PRODUCTS

Evans' Drugs
"The Rexall Store"
SHAVERTOWN, PA.