

Skopic To Demonstrate New Plow At Goodleigh

Goodleigh Farm will be the scene of a demonstration of a revolutionary type of plow, Thursday, October 25, at 1:30.

Joseph Skopic, Lehman, will prepare one plot of ground in advance to show the finished product, then demonstrate how the results are accomplished with the Graham-Hoeme chisel plow.

Skopic explains that the new plow leaves the mulch and topsoil on top instead of turning it under in a furrow, breaking the soil deeply for drainage and moisture retention, and is in addition a time saver.

The ground, he says, is crisscrossed a number of times with the plow to reduce first large clods and later smaller lumps. When the work is finished the ground is ready for planting, smooth and soft. The plow covers a wider area in one operation than any other type.

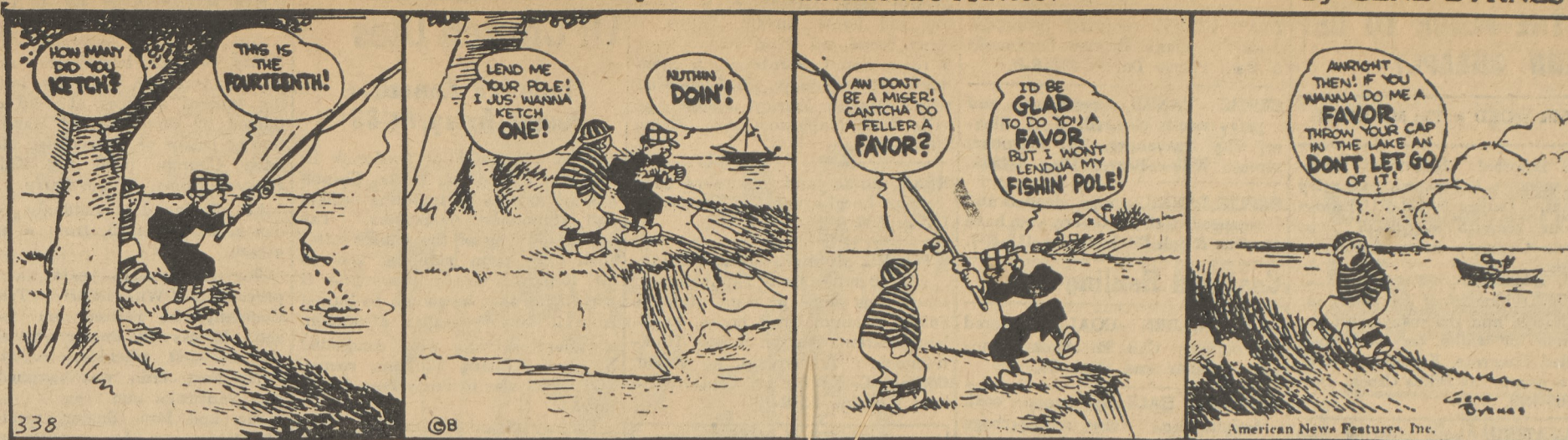
Asked if it took more power to operate the plow, Skopic said it did, a little, but that a modern tractor was equal to the extra pull.

News is formed from the first letters of North, East, West, and South.

REG'LAR FELLERS

Jimmie Will Probably Follow Puddenhead's Advice.

By GENE BYRNES



MARY WORTH'S FAMILY



Shavertown PTA Hears Bugbee On Iran, Egypt

Shavertown PTA had as guest speaker Monday night Professor LeRoy Bugbee, head of the history department at Wyoming Seminary. Professor Bugbee spoke on the United Nations and the situation in Iran and Egypt. Charles Eberle presided.

A children's matinee, "The Hills of Home", starring Lassie in technicolor, is scheduled for October 27 at the Shaver Theatre. Proceeds go to the PTA fund.

S. M. GLOVA
Funeral Director
Harveys Lake 4000

Deer May Be Killed With Bow and Arrow

Special Licenses Will Be Issued This Season

During the two week period October 15 to 27, inclusive, excepting Sunday, archers may enjoy a deer season all their own for the first time in Pennsylvania.

Before going afield for an October buck hunt, each bow and arrow hunter must first own a "regular" license, which costs \$3.15. He must also have a Special Archery License and Archery Preserve Permit, which is a single license, costs \$2.00 and is obtained from the Department of Revenue, Harrisburg, if he wishes to hunt:

(a) During the October bow and arrow season or (b) In any open season in the special archery preserves located in Forest and Sullivan Counties.

If the bow hunter wishes to hunt antlerless deer during the "doe" season, December 14-15, in either or both of the archery preserves he must have a regular hunting license, a Special Archery License and Archery Preserve Permit plus an antlerless deer license for the county in which the preserve is located.

Except as above defined, bow and arrow hunters require only a current resident or nonresident license to hunt small game or bears during the lawful open season for such game species.

A bow and arrow hunter may kill one legal antlered deer, which must be a buck with two or more points to one antler, in the state-wide October season. He may not carry a firearm of any kind while hunting with bow and arrow in the October archery season.

Any person who desires to use bow and arrow during the "regular" buck season in December, needs only his 1951 hunting license. However, before any one, bowman or gunner, may hunt for antlerless deer on December 14 and 15, he must purchase, also, an antlerless deer license costing \$1.10 from a county treasurer or the Department of Revenue, at Harrisburg, unless permitted by law to hunt without

Bound For Korea



Captain Alfred Camp

Captain Alfred M. Camp, home for the last few days on leave of absence, is leaving today for Fort Sill, Oklahoma, en route for California, with Korea his objective.

Captain Camp, former supervisor of music at Dallas Township High School, has recently graduated from the Advanced Officers Field Artillery School at Fort Sill.

He was activated in May with the 967th Armored Field Artillery Battalion.

His wife, on leave of absence from Kingston Township schools where she served as school nurse, will accompany him to California where she will make her home until his return from overseas.

Awards during World War II netted Captain Camp the Silver Star, Bronze Star, Bronze Arrowhead, and three battle stars.

license on land resided upon or immediately adjacent thereto.

The section of the law which provides that certain farmers and landowners may hunt game without the usual resident hunting license does not apply in the 1951 archery season. New legislation bearing on bow and arrow hunting requires that everyone own both a "regular" hunting license and an archery license to hunt or kill antlered deer anywhere in Pennsylvania during the October season. There are no exceptions.

Draws Big Attendance

Eastern Star card party, held at 100F Hall, Luzerne, drew a crowd of 150. There were many attractive door prizes. Proceeds will go to the entertainment fund for Eastern Star Home, Philadelphia.

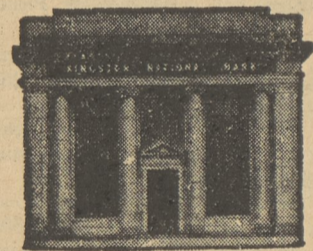
Mrs. Anne Joseph and Mrs. Claire Troxell were co-chairmen.



A check saves walking or riding. You write the check in the convenience of your home or office. The money is paid and the endorsement on the back of your check constitutes a receipt.

Open a checking account at The Kingston National Bank tomorrow.

OPEN FRIDAY AFTERNOONS UPNTIL 5 P. M. FOR YOUR CONVENIENCE.



The Kingston National Bank

At Kingston Corners
FOUNDED 1896

(Member Federal Deposit Insurance Corporation)

Call **GAY** For **INSURANCE**

- Farm Bureau Mutual Auto Ins. Co.
- Farm Bureau Mutual Fire Ins. Co.
- Farm Bureau Life Ins. Co.

ARTHUR GAY
Dallas RD 3
Centermoreland 62-R-3

ERNEST GAY
346 Bennett St., Luzerne
Kingston 8-1191

Home Office: Columbus, Ohio

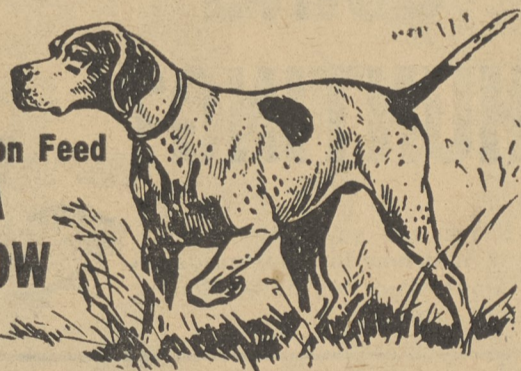
For the best IN DRY CLEANING THINK of HECK
PHONE **H. L. 4256**
Men's Shirts Laundered

PRESSING CIDER DAILY
Capacity 35 Bushels every 20 minutes
NO WAITING

OVERBROOK CIDER MILL
Overbrook Avenue
KOZEMCHAK BROTHERS, proprietors
Telephone Dallas 144-R-16

For FIELD CONDITION . . .

Sound Nutrition Feed **PURINA DOG CHOW**



Sound nutrition is the basis for condition . . . field condition that will keep a dog going all day. Purina Dog Chow is the ration designed to keep your dog well fed . . . help keep him well up in condition for long hours in the field.

Many champions have been fed Purina Dog Chow throughout the years. Their trainers find Dog Chow provides the nutrition their champions need to stay up in condition to last all day long.

Get Purina Dog Chow for your hunter. Come in and see us about feeding Purina Dog Chow.

OLD TOLL GATE FEED SERVICE
Trucksville Phone 520-R-2

Try Our **BIGGER BETTER** Bar B Q's

KOZY KORNER
THOMAS SIMON, prop.
3 Main St., Shavertown
Phone 253-R-16

See The Statue Dance At Dallas Township

What is a Statue Dance? That is a question which will be answered next Wednesday night at 8, in Dallas-Franklin Township auditorium, when the PTA holds its Halloween dance. The date has been selected not to conflict with the Halloween parade in which many Dallas Township children will march on October 31.

Added attractions are a Cake-Walk and a Spot Dance. Pat Finley's Orchestra will play and there will be prizes for the prettiest, funniest, and most original costumes.

The home room having the largest delegation of parents present will win a prize.

Co-Chairmen are J. G. Maza and Charles Roberts, with Robert Fleming and Allison Simms on the committee.

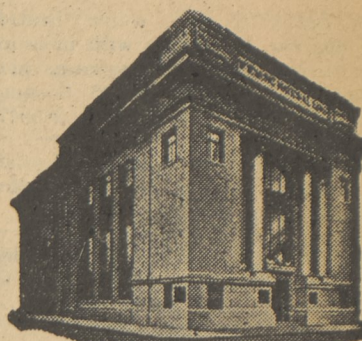
Prizes are in charge of Mrs. Crozier Wileman and Mrs. Philip Cheney; refreshments, Mesdames Allison Simms, Charles Lipp, Paul Steinhauer, Daniel Davis, and Thomas Heslop; publicity, Mrs. Robert Bachman and Mrs. Raymond Elston; decorations, Miss Van Sant. The school will handle the decorations under her direction.

Belva Lockwood was the only woman ever to run for president.

SPECIAL CHECK SERVICE FOR EVERYONE

20 CHECKS \$2.00

YOUR NAME PRINTED ON EACH CHECK



WYOMING NATIONAL BANK
OF WILKES BARRE
116 YEARS OF BANKING SUCCESS AT
Corner Market & Franklin Streets
Member Fed. Deposit Insurance Corp.

116 YEARS OF BANKING SUCCESS AT
Corner Market & Franklin Streets
Member Fed. Deposit Insurance Corp.

See The Perfect Cooking Ranges

for the Rural Areas

CALORIC RANGES

AND

Enterprise Ranges
New Models Are In

Harold Ash

Plumbing - Heating - Bottled Gas
Phone 409-R—Shavertown

You Are Invited To Visit Our New Store

R. L. Eyet's

JEWELRY STORE

Main Highway—Shavertown, Pa.

Featuring **WATCHES • CLOCKS • JEWELRY**
Fine Watch Repairing A Specialty

PHONE **BERTI & SON**

DALLAS 277-R-2

- GLEN ALDEN COAL (Nut, Stove, Buck, Rice)
- BLUE STONE
- TOP SOIL, FILL
- GENERAL HAULING



AT LOWER SPRING PRICES

- RED ASH
- CINDERS
- STOVE WOOD (Saw Mill Lumberyard)
- FIRE PLACE LOGS

ASHES and GARBAGE COLLECTED WEEKLY

BERTI & SON
FRANKLIN ST., DALLAS

FLANNIGAN'S CUT-RATE

SUNSET - HARVEYS LAKE

OPEN EVERY NIGHT