

# LIGHTED HOME EXPRESSES CHRISTMAS CHEER



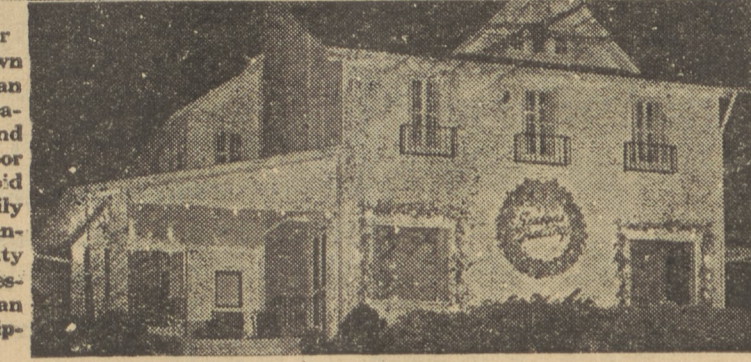
Follow any one of the four Christmas lighting schemes shown in the photographs above or plan your own by combing those features that best suit your home and family. By planning your outdoor holiday lighting early, you avoid the disappointment of hastily planned decorations. Early planning also gives you an opportunity to find new ways to use your present equipment, and gives you an opportunity to choose new equipment wisely.

If you want your home to express all the yuletide happiness your family feels during the Christmas holidays, plan your outdoor lighting now. Early planning not only gives you a chance to work up some ideas, but allows time for making some of your own outdoor lighting decorations.

Holiday lighting arrangements can be as individual as the family that occupies each home. They don't need to be elaborate or expensive to express your Christmas sentiments to the world.

Whether you're an old hand at outdoor lighting arrangements or are lighting your home for the first time this year, you'll find many ideas in the four photographs above that you can duplicate.

A careful study of the architectural lines of your house may provide the theme of your outdoor lighting decorations as they did in home shown in the photograph at



the extreme top above. The three natural peaks on the roof of the house suggested an ideal background for three giant Christmas tree outlines. As you can see, strings of colored outdoor lights are fastened to the house in the form of a Christmas tree and each topped with a lighted star.

Notice how the complete design is held together with the lighted greeting. There are many types of lighted signs which you can use to express your holiday greetings. If you have a basement workshop you may want to fashion your own. Simply cut each letter of the greet-

ing from composition board; mount on a shallow trough-like frame and mount lights behind each letter.

### Novel Arrangement

New home owners will enjoy the novelty of tying the front of their house like a Christmas package, as shown in the photograph on the upper left. Use red oilcloth or other weatherproof material for the ribbon effect and mount a composition board "gift" tag with a "Merry Christmas" message above the door.

In the home pictured above, the yuletide spirit was carried to the windows where a pair of black and white composition board snowmen were fastened to each shutter. To give the decorations the effect of a package tied in crisp white tissue paper, the house was lighted with 150-watt PAR-38 floodlights con-

cealed behind the shrubbery. A PAR-38 spotlight, placed in front of the tree to the right of the door was aimed toward the greeting card to make its message clearly visible.

### Traditional Scheme

For those who enjoy a more traditional decorating theme, simple lighted wreaths at each window and lighted festooning around the first floor windows and over the door will give a pleasing effect, as illustrated by the photograph in the center right above.

When using festooning with colored lights, here are a few points that you will want to keep in mind: Drape the festoons toward the focal point in the lighting scheme. Use the warmest colors in your lighting arrangement where you want to concentrate attention and cooler colors away from the center of interest.

Floodlights, lighted festooning and a lighted greeting were all used to give a holiday air to the large home, shown in the photograph on the lower right above. Notice how the lighted evergreen wreath with its "Seasons Greetings" was placed between the two large front windows. Simple lighted festoons around the windows; the door tree, placed in front of the left window and colored lights along the side porch, provide a simple but effective holiday arrangement. Two PAR-38 150-watt floodlights, placed at each end of the line of shrubbery in front of the house emphasize the white exterior.

If you prefer to bathe your house in colorful light, color roundel attachments may be added to your outdoor flood or spot lights.

Both the 150-watt projector flood and spotlights are weatherproof and have their own built-in reflector. Remember, the floodlamp has twice the beam width of the spotlight, while the spotlight concentrates much more light in its narrower beam.

### Harveys Lake Lions Plan Christmas Party

Plans for a Christmas party to be held December 27 starting at 8:30 at Herman Kern's were made at the meeting of Harveys Lake Lions Club Wednesday.

Program will include carol singing, dancing and presentation of gifts to the ladies. Members of the club made plans to place containers for the Vacation-For-The-Blind project in local business places. The purpose of the promotion is to afford blind persons the opportunity to enjoy a summer vacation at the Lewistown, Pa., summer camp.

### Veterans Pace Borough Five

#### Dallas Quintet May Be The Team To Beat

Dallas Borough Basketball team, has six lettermen returning, plus a few youthful members of last year's JayVees, placing it high among the contenders for League championship. Picked by the Post as the sleeper for this season, Dallas has an excellent chance to cop the title this year and bring it back to the case from which it has been missing since 1947.

With Jack Piznar and Frank Pavlick, both second team All Star choices last season, to lead the veteran squad Dallas should prove troublesome to all the teams in the league. Dallas lost only Bruce Roberts, an honorable mention selection from last year's All Star team. Veterans Piznar, Pavlick, Ned McGarry, Dave Evans, Lowell Roberts and Bob Stair, all of whom earned letters last year, have returned for the season.

Hughestown, Beaumont and West Pittston will furnish the opposition in pre-season exhibition games. Coach Rockovich names Kingston Township as the most dangerous team in the league and predicts that it will be a race to the wire between his five and the Katies.

#### DALLAS BOROUGH ROSTER

Jack Piznar	Senior	6'-1"
Frank Pavlick	Senior	5'-9"
Dave Evans	Senior	5'-9"
Ned McGarry	Senior	5'-9"
Lowell Roberts	Senior	5'-8"
Bob Stair	Junior	5'-11"
Carl Youngblood	Junior	5'-9"
Bruce Berrettini	Junior	5'-6"
Bill Dettmore	Soph.	5'-10"
Gene Brobst	Fresh.	5'-9"
Charles Tredinnick	Fresh.	5'-9"
Gene Cundiff	Soph.	5'-7"
Lewis Kitchen	Soph.	5'-3"
Bob Widman	Soph.	5'-10"

Managers—Tom Peirce and Ben Jenkins.

### Tregaskis Reports Few Hunting Law Violations

Chief Charles Tregaskis and his patrolmen of Tregaskis Detective Agency said there were only two game law violations during the 1950 hunting season on all of the thousands of acres posted by their agency in the Back Mountain Area.

Both arrests were made on property owned by Col. Dorrance Reynolds and both were heard before Justice of the Peace John Fowler of Orange.

### Feminine Hunters Bring Home Deer

Among the successful feminine hunters who obtained deer during the current season were Virginia Culp, 15, daughter of Mr. and Mrs. Robert Culp of Huntsville, and Mary Shook of Beaumont.

Virginia got a doe on the first day of the season while hunting at Ferris Robert's Farm near Red Rock with her sister, Charlotte, and her father.

### Entertains Club

Mrs. Nelson Whipp, Church street, entertained members of her card club at a Christmas dinner party Tuesday. Present were Mrs. Sherman Wardan, Mrs. William Wilson, Mrs. D. P. Honeywell, Mrs. Oscar Roth, Mrs. George Hofmeister, Mrs. James Gansel, Mrs. Margaret Hildebrand, Mrs. Claude Shaver and the hostess.

### PURVIN'S GARAGE

Shavertown

Auto glass repaired and installed

Inspection deadline January 31

Phone 192-R-13

1949 NASH Ambassador Sedan Radio - Heater - Overdrive OLIVER'S Used Car Location—Junction Dallas, Tunkhannock Hwy. Dallas, Pa.

### Christmas Gifts



All Steel Roller Coasters \$2.98, Ferris Wheels \$1.98, Jack in the Box, \$1.98, Metal Trucks 10c up, Tinker Toy Sets 49c, Sparkling Freight Trains \$2.98, Dolls Complete Assortment, Pottery Boudoir Lamps \$1.98, Flash Lights 69c.

COLORFUL WRAPPINGS, AND DECORATIONS

We Will Be Open The Evenings of—

Fri. Dec. 15th, Sat. 16th, Wed. 20th, Thurs. 21th, Fri. 22nd and Sat. 23rd.

### DALLAS 5c, 10c, \$1.00 STORE

46-48 MAIN STREET — DALLAS, PA.

# BIG SAVINGS

## at HALL'S PHARMACY SHAVERTOWN

Kodaks and Brownies \$2.75 to \$19.50

8 and 16 M-M Film

Flash Bulbs ALL SIZES

Wrist Watches \$4.95 to \$12.50

Pocket Watches \$1.98 to \$3.50

Alarm Clocks \$1.98 to 9.50

#### ELECTRIC CLOCKS

FRIENDSHIP'S Garden Sets \$2.00 to \$5.50

DESERT FLOWER Perfume \$1.00

Bond Street SETS \$2.00 to \$5.00

Cutex SETS 89c to \$3.50

BATH ROOM Scales \$6.95 to \$8.95

HAWKEYE Flash Outfit \$19.50

Flashlights 98c to \$1.95

Yardley Sets 2.75 to \$7.50

Coty Perfume \$1.00 to \$5.00

XMAS CARDS 39c to 97c per box

#### SMART SANTAS ARE GIVING

Whitman's CHOCOLATES

GIVE A SAMPLER AND YOU GIVE THE BEST

#### WE ALSO HAVE

Cynthia Sweets and Candy Cupboard 98c — \$1.10 — \$1.35 — \$1.60 — \$1.85 — \$2.00 — \$4.00

G-E—CASCO and LOBL HEAT PADS \$A.69 to \$7.50

DENNISON'S Gift Wrappings PAPER—RIBBON SEALS and TAGS 10c



Thermos Bottles and Lunch Kits GEM RAZOR with Blades \$1.00

#### HAVE YOUR PRESCRIPTIONS Filled At HALL'S

Where every consideration is given in Compounding Prescriptions.

Yardley's For Men \$2.00 to \$4.50

Old Spice For Him \$1.00 to \$5.00

FOR BABY Bottle Sterilizers \$5.95—\$7.95

Scales 6.95 to \$8.95

Jewelite Brush Sets \$2.00 to \$10.00

Compacts \$1.00 to \$6.00

Perfume Atomizers \$1.00 to \$3.50

YARDLEY Bath Salts \$1.25 to \$3.75

Cigarettes \$2.00 per carton

Finest In Pipes Kaywoodie Yello-Bole Medico and Purex

Billfolds \$1.00 to \$15.00

SCHICK and SUNBEAM Electric Razors

Ronson Lighters \$5.50 to \$10.00

Shaving Brushes 98c to \$7.50

Tapertite Candles ASSORTED COLORS

Hard Candies AND ASSORTED NUTS

Yardley and Old Spice Soaps