

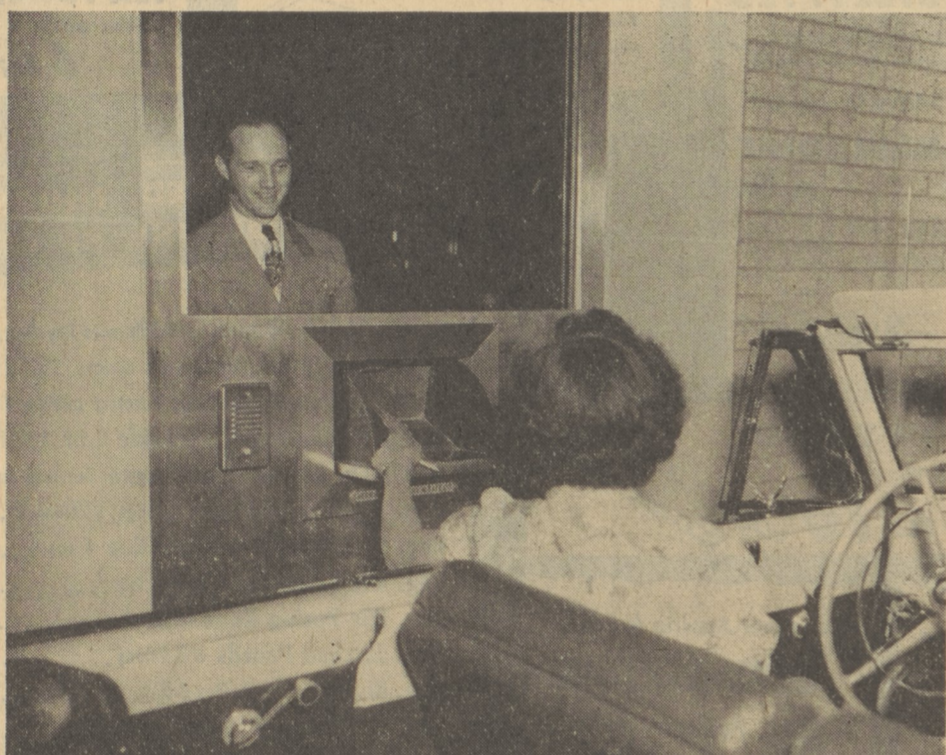
The FIRST NATIONAL BANK of DALLAS

Invites You To Attend The
OPENING OF ITS ENLARGED QUARTERS

And To View Its **DRIVE-IN DEPOSIT WINDOW** *First In Northeastern Pennsylvania*

Saturday, October Fifteenth

from 9 A. M. until 8 P. M.



William Baker, teller receives a deposit from Mrs. William Dennison at the Drive-In Deposit Window, one of the first in Northeastern Pennsylvania. A push button signals bank employees to the window and a speaker system permits customer and teller to converse during the transaction.



The Customers' Room has been enlarged to meet the growing requirements of the Bank and Community. The entire Bookkeeping Department has been moved to the second floor and new private offices have been provided for President and Cashier.

This Institution Which Has Served The Back Mountain Community Through Good Years And Bad Since 1906 Is Proud To Present



The new Directors' Room is at the front of the Bank on the second floor. Red leather upholstered chairs and maroon drapes are in pleasing contrast to walls of Williamsburg green.

- ★ The First Drive-In Deposit Window in Northeastern Pennsylvania
- ★ Enlarged Customers' Room
- ★ New Bookkeeping Department
- ★ New Night Depository
- ★ Enlarged Safe Deposit Facilities
- ★ New Directors' Room



A section of the Bookkeeping Department on the second floor. Here ample space is provided for future expansion. The most modern accounting machines are used in this department. An elevator transports ledgers from first floor to second.

Comparative Statement

ASSETS

	January 1, 1931	October 1, 1949
Cash	\$ 45,506.63	\$ 370,951.80
Loans & Discounts	244,568.09	1,502,112.38
U. S. Securities	66,400.00	1,159,800.00
Other Securities	234,572.19	207,570.50
Banking House Fixtures and Real Estate	66,637.85	44,598.45
Other Assets	312.62	2,333.31
	\$657,997.38	\$3,287,366.44

LIABILITIES

	January 1, 1931	October 1, 1949
Capital	\$ 75,000.00	\$ 100,000.00
Surplus, Undivided		
Profits, and Reserves	68,102.14	224,443.75
Deposits	479,895.24	2,960,560.41
Other Liabilities	35,000.00	2,362.28
	\$657,997.38	\$3,287,366.44