

### FARM TOPICS

**Provide Poultry Range**—Poultry extension specialists of the Pennsylvania State College say that an acre of good range will carry 500 to 600 pullets up to 22 weeks of age. From 100 to 200 turkey poulters can be carried on a like area until pasture conditions indicate a larger area to be more desirable.

**Protect Livestock**—Pasture areas infested with water hemlock and poison hemlock should be fenced off to protect livestock from being poisoned. Snakeroot and bracken fern also will poison livestock.

**Control Bean Insects**—Dust or spray with rotenone to control the second-generation Mexican bean beetles. For control of black aphids on lima bean flower clusters, spray with 40 per cent nicotine sulphate according to directions.

**Prepare Show Cattle**—Experienced showmen know that proper training and fitting pay dividends in the showing. Careful feeding and grooming are important in fitting, while patience and practice are required in training animals to pose as well as lead.

**Turkeys Need Water**—Turkeys drink a lot of water during the ranging season, at 13 weeks of age 100 birds will drink 7 gallons a day. By market age the same number of birds will drink 20 gallons a day.

**Chop the Straw**—For use as bedding, straw will be improved by running it through an ensilage chopper and blowing it into the mow. Chopped straw takes about the same space as baled straw, but is more easily handled and absorbs twice as much liquid.

**Order Roses Now**—Place orders promptly for roses for fall planting. This will assure best selection of varieties.

**Save Garden Moisture**—Maturing vegetables need available moisture. Kill weeds and apply mulch if available.

**Plant Good Wheat**—Since much wheat is of poor quality, farmers are urged to clean out the light kernels and use the plumper grains for seed. Where old wheat is available it may be better seed than the new, but a germination test should be run.

**Save Hay for Poultry**—Be sure to make some hay for feeding the poultry flock. Good leafy hays provide essential vitamins, proteins, and minerals. Chop the hay in lengths of 1 to 4 inches and feed on the floor or in racks.

**Run Tractors Right**—Tractors operate most efficiently when run near full load and at rated maximum governor speed. Greatest economy can be achieved by utilizing as much of the power as possible in pulling full loads.

**Kill the Rats**—Conserve grain by killing the rats which eat and waste large quantities. Cleaning up the hiding places, trapping, and poisoning with Red Squill bait.

**Prune Young Trees**—Pruning of young forest trees assures clear, straight trunks and a better timber crop.

**Harvest Legume Seed**—Because legume seed is low in supply and high in price, farmers are urged to harvest for seed purposes any promising crops of alfalfa, red clover, or Ladino clover. Even light crops usually pay for harvesting.

**Order Trees Early**—Farmers planning to plant Christmas trees are urged to order their seedlings early. The demand still exceeds the supply. Some growers already have placed their orders.



### "In The Interest of Purebred Dogs"

by Margaret McL. Cottle

As more and more families are moving from crowded, noisy cities into the suburbs or the country, a greater interest is seen in dogs, and they are an integral part of many homes where they give love, companionship, sport and protection worth much more than their cost.

There are now one hundred twelve distinct breeds of dogs recognized by the American Kennel Club (commonly called "The A. K. C."). These are divided into six groups, each group embracing all of the breeds which have a similarity in purpose or use for which they are bred. These groups are designated 'Sporting Dogs' (22 breeds); 'Hounds' (18 breeds); 'Toys' (15 breeds); and 'Non-Sporting Dogs' (8 breeds). Some of these are very popular; others are unknown except to an interested few, and of course the degree of popularity of any breed varies over a period of years.

Each officially recognized breed has a certain "Standard"—specification outlining details of physical makeup and type, and describing the character and temperament of the dog and the uses to which he is adapted.

Of the various groups, "Terriers" are probably the most widely known, and each breed has its own enthusiastic admirers.

**The Schnauzer—Standard and Miniature**

The Schnauzer is of German origin and is said to be recognizable in pictures dating from the 15th century. However the modern breed is probably derived from the crossing of black poodle and wolf grey spitz with the old German pinscher stock. The breed is characterized by a stocky build, harsh wiry coat and fairly abundant wiry whiskers. The "pepper and salt"

color caused by a mixture of light and dark banded hairs, is peculiar to the breed.

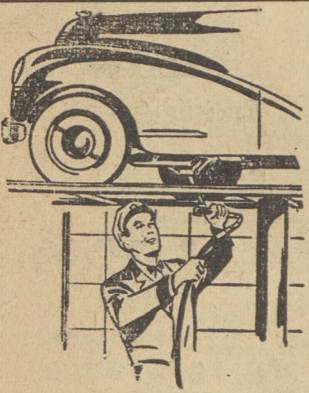
The "Miniature" was scaled down to his small size by early crossings of smaller "standard" individuals with the Affenpinscher, a small black German breed, and has been a distinct breed from 1899. He is usually more varied in color than his larger relatives and is less aggressive in temperament. The typical miniature ranges in the neighborhood of 12 inches in height and from 12 to 15 pounds. He is hardy, active, intelligent, adaptable, and a good ratter. His small size makes him a suitable dog for town life and confined quarters, but he is also very much at home in the country and makes a fine companion on a long hike.

Minatures have been bred in the United States since 1925 and have gained steadily in popularity. They are popular entries at most dog shows and are often "Best in Terrier Group" and "Best in Show" dogs.

The cut shows "Champion Dorem High Test" and "Champion Dorem Tribute" as youngsters. "High Test" was "Best of Breed" at Morris & Essex (82 dogs competing) and "Tribute" took the same award at Cleveland and was "Best in Show" at the American Miniature Specialty Show. They are sons of the famous "Champion Dorem Display" and are owned and shown by Mr. and Mrs. Phil Meldon of Cleveland, Ohio.

The name of the county seat of Armstrong County—Kittanning—is derived from an old Indian name.

Erie County is one of the leading industrial and agricultural counties of Pennsylvania.



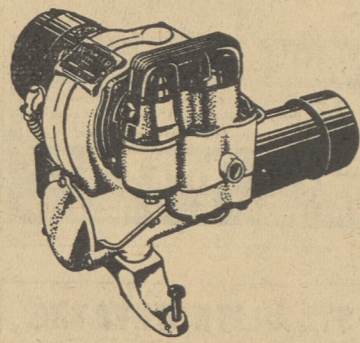
### Don't SPARE THE GREASE

... or you'll spoil the car. Drive in to our service station today. We'll ready your car for winter with light-weight grease. Change the oil, too. Stop by now.



SNAPPY SERVICE WITH A SMILE

HAZELTINE'S AUTO SERVICE  
MAIN STREET  
Dallas, Pennsylvania



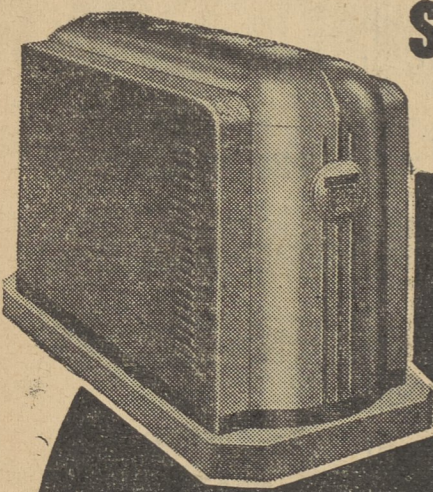
### SHORT OF OIL? SEE US

The new 1948 Winkler Low Pressure Oil Burner is here.

It burns less Oil—25 to 50%  
It burns most any Oil

Less Service  
**HEATRITE**  
Sales & Service Co.  
Route 309 & Center Street  
SHAVERTOWN, PA.  
DALLAS 579-R-7 — 158-R-8  
HARVEY'S LAKE 4088

Now ... you can have the best in oil heat ... Change to the **NEW SUN-BLAZE**



### Boiler Unit

WHY carry on year after year with a BIG out-moded heating plant? Why not have this marvelous, new compact

oil-fired boiler in your home. Takes up only a small space, only 40" high, 21" wide, yet heats up to 12 rooms with ease. Employs new "Sun-Blaze" principle, originally developed in compact aircraft heaters for Uncle Sam's Air Forces. Gives more heat, quicker, on less oil. Manufactured by Harvey-Whipple, Inc., Springfield, Mass., one of the oldest pioneers in the oil-heating industry.

**FIRST TO HAVE THE ELECTRONIC CONTROL**  
The new Master Kraft Sun-Blaze Boiler is the first boiler-burner unit to be equipped with the marvelous new Electronic Control. ... the eye that never closes ... watches the fire every moment it burns — gives instant safety control — saves on both electricity and fuel oil. The manufacturer of this burner — Harvey-Whipple, Inc., is the first oil burner maker to adopt the Minneapolis-Honeywell Electronic Safety Control as standard equipment. Phone for details or stop in and SEE it.



**THE HUGHES CORP.**

245 CHARLES STREET - LUZERNE, PA.  
KINGSTON 7-5258

### Building Shows Slump In State

By Pennsylvania News Service — Building activity in Pennsylvania — both residential and non-residential — showed an over-all slump of 9 per cent in June, according to the State Department of Labor and Industry.

This is based on the number of building permits issued in communities throughout the State, a spokesman said, noting that new residential construction alone dropped 24 per cent over the previous month while non-residential construction declined 29 per cent.

In June a total of 1796 permits were taken out for home construction, while in the preceding month of May the number of such permits issued numbered 2405. However the June figure is still above the same month last year, which had only 1543 permits for new home construction issued.

Even non-residential permits dropped from 988 in May to 696 in June (634 in June 1947), the department said.

Similarly and in line with the decrease in the number of building permits issued, the over-all estimated costs declined. It was estimated that 1796 home construction permits taken out in June of this year represented construction costs totaling \$15,733,600, as compared with \$20,705,355 in May when 2405 such permits were issued. This represents a decline in estimated construction costs for home building of 23 per cent.

The one bright light on the building horizon in construction reflected in the fact that permits issued for improvements increased 2.6 per cent—with expenditures decreasing 17.9 per cent.

### Plumbing Firm Chartered

Special to The Dallas Post  
Harrisburg, September 16—(PNS)—Joseph A. Hughes, of Saginaw street, Goss Manor, has been listed as one of three incorporators of The Hughes Corporation, 245 Charles street, Luzerne, according to a State Charter approved for that concern.

The firm has been chartered for plumbing and heating engineering and contracting; dealing in plumbing and heating and building supplies; electrical household appliances and hardware.

With a capitalization listing of \$250,000, other incorporators are listed as Paul M. Walsh, Wilkes-Barre, and Marian H. Mack, Kingston.

SHOP **Pomeroy's** FIRST  
IT'S EASY TO GET TO!

### Arthritis Pain

For quick, delightfully comforting help for aches and pains of Rheumatism, Arthritis, Neuritis, Lumbago, Sciatica, or Neuralgia try **Romind**. Works through the blood. First dose usually starts alleviating pain so you can work, enjoy life and sleep more comfortably. Get **Romind** at drugstore today. Quick, complete satisfaction or money back guaranteed.

### BACKACHE

For quick comforting help for Backache, Rheumatic Pains, Getting Up Nights, strong cloudy urine, irritating passages, Leg Pains, circles under eyes, and swollen ankles, due to non-organic and non-systemic Kidney and Bladder troubles, try **Cystex**. Quick, complete satisfaction or money back guaranteed. Ask your druggist for **Cystex** today.

### Radio Service

Do not miss the fine programs on the air - have your radio checked over - now!

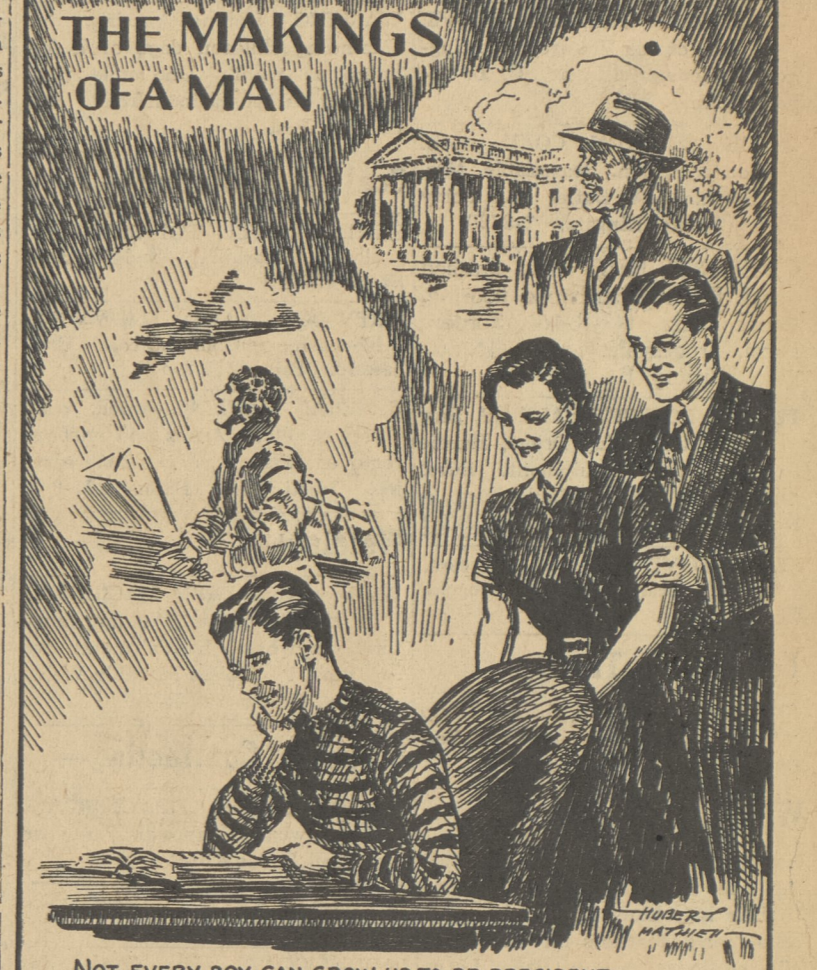
GUARANTEED SATISFACTION  
GUARANTEED PARTS!  
GUARANTEED WORK!

**C. L. CONGDON**  
Back Mountain Radio Service  
PHONE 317-R-8  
Demunds Road, E. Dallas

### NOTICE TO Jordan Beauty Shop Patrons

Because of improper heating facilities, the shop will be moved to Trucksville Gardens after October 1 until a more desirable location is available. Call resident telephone, Dallas 318-R-3 for appointment. Elizabeth Jordan, owner

### OUR DEMOCRACY — by Mat

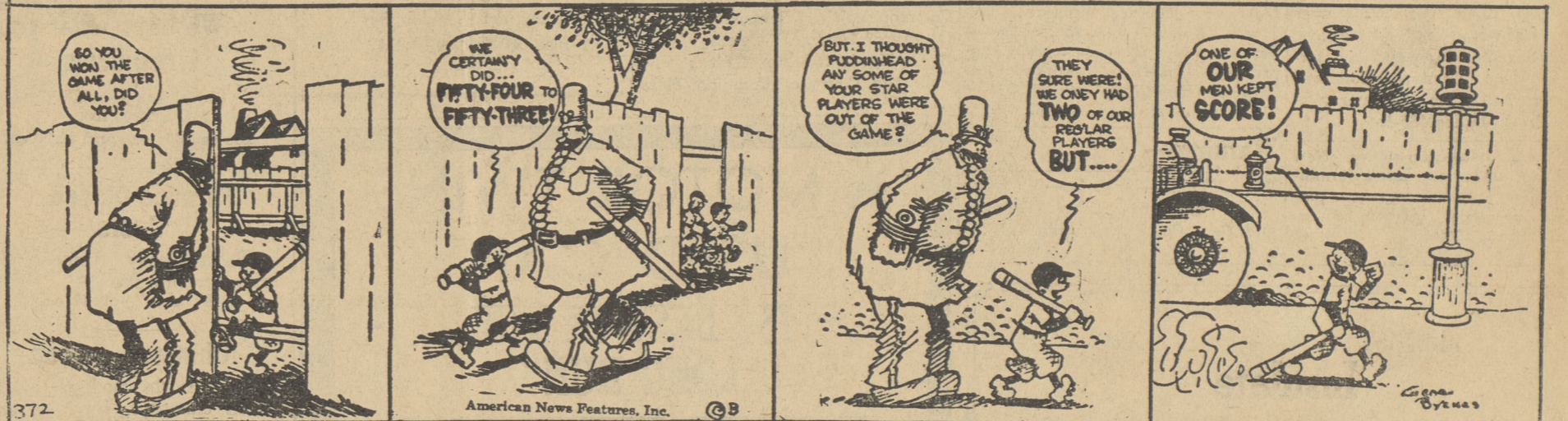


NOT EVERY BOY CAN GROW UP TO BE PRESIDENT — YET EVERY AMERICAN YOUNGSTER, BORN TO A HERITAGE OF FREEDOM, HAS THE OPPORTUNITY FOR ADVANCEMENT IN PROPORTION TO THE USE HE MAKES OF HIS TALENTS AND THE EFFORT HE PUTS FORTH. BUT TO REALIZE IN FULL THESE ADVANTAGES, HE MUST BE PREPARED TO MEET THE RESPONSIBILITIES THAT GO WITH THE PRIVILEGE OF BEING  
**A UNITED STATES CITIZEN**

### REG'LAR FELLERS

### The Pencil Is Mightier Than The Bat

By GENE BYRNES



### MARY WORTH'S FAMILY

