

### Efficient And Maximum Production Urges For Agriculture During 1948

(Continued from Page One)

Full season: lower end of county and bottom land: Ohio K 24; Ohio M 15; Pioneer 373; Dekalb 240; Funks G 12; Funks G 10. Good Hybrid corn will be scarce. order your seed early!

#### Weed Control: 2-4-D:

There are great possibilities with this hormone in the control of weeds in corn and oats. Fred Bittenbender eliminated practically all the weeds in his corn and oats by using 1 lb. powdered 2-4-D in 125 gallons of water and applying the above amount on two acres of crops. If you wish for further information we will be glad to give it to you. Care should be taken in washing out the sprayer after using hormones. One gallon of strong ammonia in the tank of water for 48 hours has proved the best treatment followed by a thorough washing.

#### Potato Varieties:

Teton, a new white potato, is a good yielder, certified seed is available. Essex, a white, blight-immune potato was the highest yielder in the tests last year. Very little of

this seed is available as yet.

#### Erosion:

There are still many farms and fields in Luzerne County that need some form of erosion control. The Agricultural Extension has been responsible for laying out so many of the farms throughout the County. We will do our part. Your part should be a request for help—ask that man who has had his farm stripped.

Domestic rye grass is being used generally throughout the County, but there are still many corn and vegetable fields that should have about 20 lbs. of domestic rye grass seeded after the last cultivation. It should be a must, never to allow a field to be barren over winter. Sheet erosion is a great robber on open soils.

#### DAIRY BUSINESS

With dairy feeds likely to remain high during 1948, the relation between prices and cost will become less favorable in 1948. Be efficient in your dairy. Cull out the unprofitable cows while meat prices

are high. Plan your breeding program for more fall and winter milk. Feed well-balanced rations and better hay if possible. Keep only the better heifers for replacements. N. E. P. A. Artificial Breeding Association will breed close to 36,000 cows this year. Are you using these facilities for better breeding? Eliminate the scrub bull and put a couple of good cows in the barn space where the bull stood.

#### 4-H Calf Club:

There is a growing need for an outstanding Luzerne County 4-H Calf Club. Do you have a boy or girl that you think a lot of? If so, why not encourage them to become members of the club? We will be glad to receive their names and help to locate good calves. We have a rule that the heifers should come from a dam with nothing less than 400 fat on 2 x milking. We have a number of boys and girls enrolled already. How about sending in the names to us now? This club will include all the standard breeds. A calf club is often the foundation of a good herd, and that boy or girl of yours will become an adult before you know it. Why not direct them in the right way?

#### POULTRY

Good poultrymen, who are efficient, are making money, even though feed is high. Here's what they are doing:

1. They're housing birds in clean, well-ventilated quarters, not crowding. If you have a ventilation problem - Wet Litter - probably we can help you.
2. Keeping birds free of lice, mites and diseases.
3. Full feeding with the best of feeds they can get. Skimping or skipping of feeds never pays.
4. Using lights giving at least 14 hours day and using a supplementary feed at noon, either a wet mash or pellets.
5. They are culling their birds every day, and keeping their production up to at least 60%.

Better poultrymen are buying their chicks only from dependable sources and starting them in January and February, so that the hens will be laying in late summer and fall when eggs are the highest price.

#### VEGETABLES

The general food situation seems to indicate that the total demands for vegetable products will still be high in 1948. However, the irregular price situation of last year should serve as ample warning that the days of "production at any cost" are over. Vegetable growers should lay emphasis on greater efficiency, better quality, better yields and better varieties rather than expansive acreage. More vegetable men could be using domestic rye grass to prevent sheet erosion, and to build up the humus in the soil. If you have excessive acreage, why not rotate some of this acreage in a good clover sod?

We see the need for a better marketing program in Luzerne County. Our farm market in Wilkes-Barre is still in need of improvements. We are an exporting market and possibly a new system of marketing will be needed within the next few years. Possibly an auction?

The demand for green wrap tomatoes still remains strong, and while this demand continues, it is advisable for an increased acreage in Luzerne County of late tomatoes, in order to keep our tomato marketing program in a healthy condition.

#### FRUIT

Luzerne County is the fifth largest apple-producing county in Pennsylvania and the 52nd in the United States. We see the need of eliminating many of our older orchards that contain worthless varieties and planting new acreages of varieties such as Courtland, McIntosh, Delicious, Spys, etc., and several other varieties. With new orchards, you will get more efficient production, better finish on the apples and a better local demand for a quality

product. The only disadvantage of such a new planting program just now is that nursery stock is scarce and extremely high in price. We need in Luzerne County a Cooperative processing plant to work up cull crops and worthless varieties of apples. The need was never greater than in this past season. Let us give this idea some thought. A good commercial cold storage for our better varieties of apples is also needed.

Despite the wet season last spring, many growers were able to produce fruit free of scab. Were you one of the better growers, it may be man, engine failure or both. A wet season is a challenge to every grower.

#### PLANT DISEASES AND INSECTS

For the tomato blights, we are still recommending the use of a Bordeaux Mixture, or one of the fixed coppers for the best control. For potatoes—Bordeaux is the cheapest and is very effective. Many growers are planning to use Dithane this year. This will mean added cost, more thorough and more frequent applications than Bordeaux. From our observations, growers who used 1% DDT in each application of spray material secured better results than those who used it every now and then or when the insects made their appearance.

#### FORESTRY

The urge to cut and sell timber from the woodlot, many times without regard to the future production, is very common in Luzerne County. Why not make improvement cutting in your woods each winter, thus eliminating the poor and worthless trees and leaving the woodlot in good growing condition. Our foresters from Penn State will gladly give you advice and assistance on request without any charge. Evergreen trees planted on idle land is an excellent proposition for Christmas trees. We have a good Bulletin on Christmas Tree Growing. We will be glad to send this to you and we will also be pleased to talk over the growing of trees on your farm.

We have attempted to hit some of the high-spots in the Agricultural Extension Program for 1948. We are willing to assist you in any of your problems and we would like to make our office and its service available to you. We have a great variety of Bulletins and Mimeograph material for distribution. If you are not on our mailing lists or have some friends who would like to be placed on the lists, please send their names to us.

We trust that we can serve you and that the year 1948 will be a peaceful, happy and prosperous one.

Very sincerely,  
J. D. Hutchison,  
County Agent.

In Consultation with:  
C. C. Norbeck, Assistant County Agent.

#### FARM RADIO PROGRAMS—LISTEN IN:

WBAX, 1240 Kc., every Wednesday, 12:45 P.M.; WHWL, 730 Kc., every Saturday, 7:45 A.M.; WAZL, 1450 Kc., First and Fifth Mondays, 12:30 P. M.

#### PNS

The Great Seal of the Commonwealth of Pennsylvania rests in the custody of the Secretary of the Commonwealth.

### Budget Keeps Family Spending Within Income

Planned spending makes for better living, which is reason enough for having a budget, says Miss F. Edith Morton, extension home management specialist of Pennsylvania State College.

The first step in planning a budget is to estimate the family income. After this is done, the family should decide what its needs are, then its wants. Necessities come first, comforts second, and luxuries last in a good spending plan.

Miss Morton warns families to be aware of the expenses that often play havoc with a budget. The nibblers, the little items that can add up to an amazing sum in a short time; the bouncers, such as taxes, insurance premiums, and interest payments; and the slug-gers, the expenses that come when we are not looking.

A third step in budget planning is to take the list of expenses—the needs and wants—and fit them to

the income. Sometimes it may be necessary to cut corners, but cutting corners is good evaluating exercise. It helps a family decide what things mean most to it, what can be put off, and what can be done without.

The last step in planning a budget is the determination to make the plan stick, according to Miss Morton. Each member of the family must have will power to control the desire to spend at random. When one item costs more than the budget allows, less money can be used for something else.

### Officers Are Installed At Meeker Service

A special installation service was held at the Meeker Methodist Church Sunday morning. The fol-

lowing officers of the Women Society of Christian Service were installed by the pastor, Rev. Henry G. Kiessel: president, Mrs. Morton Connolly; vice-president, Mrs. William Drabick; treasurer, Mrs. John Rebennack; corresponding secretary, Mrs. Walter Wolfe; spiritual life, Miss Letha Wolfe; fellowship chairman, Mrs. James F. Davenport; secretary of missions, Mrs. Karl Rebennack; student work, Mrs. Wayne King; secretary of literature, publication and supply work, Mrs. John A. Hildebrandt.

The first regular meeting for the coming year will be held January 21, at 2:00 o'clock at the home of Mrs. John Hildebrandt.

#### PNS

The first permanent white settlement in Pennsylvania was made by the Swedes in 1638.

Charter No. 8164 Reserve District No. 3

### REPORT OF CONDITION OF THE FIRST NATIONAL BANK OF DALLAS

in the State of Pennsylvania, at the close of business on December 31, 1947. Published in response to call made by Comptroller of the Currency, under section 5211, U. S. Revised Statutes.

#### ASSETS

Cash, balances with other banks, including reserve balance, and cash items in process of collection	\$ 459,195.53
United States Government obligations, direct and guaranteed	1,210,800.00
Obligations of States and political subdivisions	146,230.00
Other bonds, notes, and debentures	73,721.75
Corporate stocks (including \$5,250.00 stock of Federal Reserve bank)	5,250.00
Loans and discounts (including \$14.10 overdrafts)	1,090,012.43
Bank premises owned \$10,000.00, furniture and fixtures \$1.00	10,001.00
<b>Total Assets</b>	<b>\$2,995,210.71</b>

#### LIABILITIES

Demand deposits of individuals, partnerships, and corporations	\$1,077,888.41
Time deposits of individuals, partnerships, and corporations	1,583,202.19
Deposits of States and political subdivisions	68,187.82
Other deposits (certified and cashier's checks, etc.)	49,904.22
<b>Total Deposits</b>	<b>\$2,779,182.64</b>
Other liabilities	3,429.69
<b>Total Liabilities</b>	<b>\$2,782,612.33</b>

#### CAPITAL ACCOUNTS

<b>Capital stock:</b>		
(c) Common stock, total par	\$75,000.00	75,000.00
Surplus		100,000.00
Undivided profits		37,598.38
<b>Total Capital Accounts</b>		<b>212,598.38</b>
<b>Total Liabilities and Capital Accounts</b>		<b>\$2,995,210.71</b>

#### MEMORANDUM

Assets pledged or assigned to secure liabilities and for other purposes \$ 65,000.00

I, Frederick J. Eck, cashier of the above-named bank, do solemnly swear that the above statement is true to the best of my knowledge and belief.

(SEAL)

FREDERICK J. ECK, Cashier

Sworn to and subscribed before me this 5th day of January, 1948. J. F. BESECKER, Justice of the Peace My commission expires January 1st, 1954.

Correct—Attest:

W. B. JETER  
H. L. TITMAN  
HERBERT H. HILL  
Directors

### QUARANTINE HIM



Courtesy Institute for American Democracy, Inc.

### THESE WOMEN!

By d'Alessio



Joseph Delvinis

"... And now, whenever I feel a bit timid, I just remind myself that I'm a mother-in-law!"

### STRICTLY BUSINESS

by McFeatters



Dale McFeatters

"I wonder if this record's cracked. I've typed 14 pages of 'Dear Sir: In reply to your letter of January 10!'"

### MARY WORTH'S FAMILY



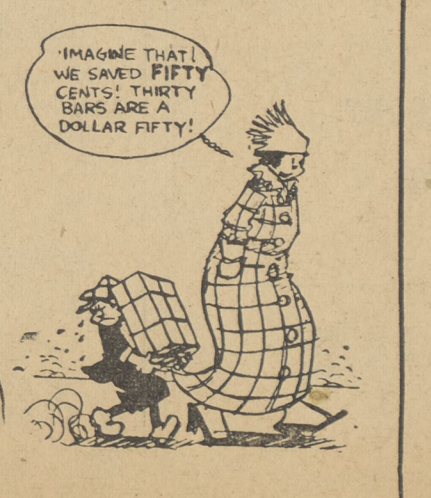
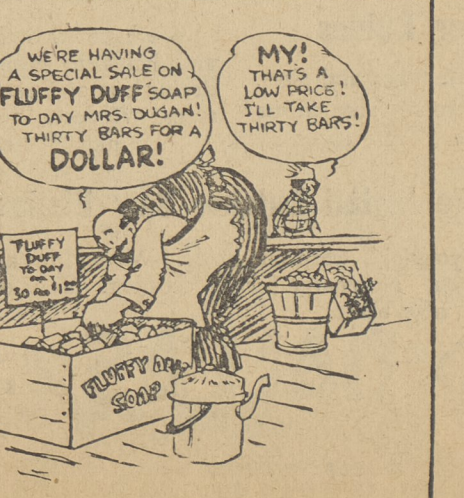
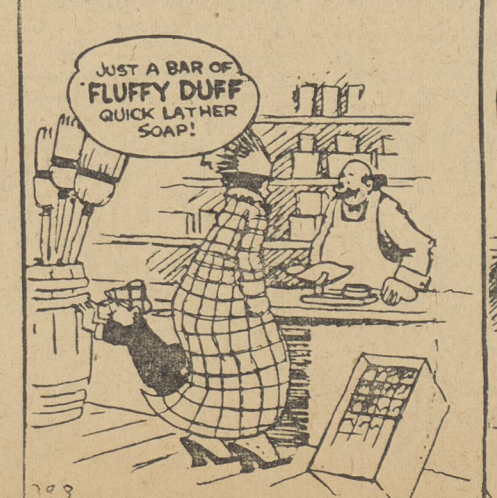
REG'LAR FELLERS



Candy Bargains Don't Happen



By Gene Byrnes



American News Features, Inc.