

### FARM TOPICS

James D. Hutchison  
County Agricultural Agent

#### FROZEN ON THE COB

The thought of corn on the cob for Christmas dinner or other out-of-season meals appeals so strongly to American appetites that many people wish to preserve it in freezer lockers, in spite of the fact

that so far it has been one of the least successful vegetables for home or commercial freezing. The commercial pack of corn on the cob is smaller than that of 15 other vegetables and has decreased in recent years, according to the Bureau of Agricultural Economics of the U. S. Department of Agriculture. The prewar pack of frozen corn on the cob was 2.7 million pounds but this had dropped to .04 million pounds in 1945. The pack of cut corn, on the other hand, has increased and now ranks fifth in importance.

In discussing this problem, Miss E. Nitzkowski, home economist of the Luzerne County Agricultural and Home Economics Extension Association, says:

"Rare is the person, and fortunate, who has not packed some corn on the cob that was doughy when it came to the table. And doughy corn is just about as unpalatable as any vegetable can be. . . . Moreover, this is a luxury type of product because so much space is wasted in the locker by the cob that must eventually be thrown away. Nevertheless, many people wish to pack it for the freezer."

To obtain a better product Miss Nitzkowski offers suggestions as a result of tests made. Doughiness in corn seems to be the result of the stage of maturity at which the corn is harvested. Corn is in prime condition for freezing only during a short period of its growth. Corn that is too young tends to be watery, but even this is better than that which is over-mature and will be doughy after it is thawed and cooked. To find out exactly the right stage for freezing requires experimenting each year.

Two varieties suggested for freezing are Golden Bantam and Black Mexican. The latter is at right stage for freezing while its kernels are white and just before they start to take on a pink color.

The following directions are offered for freezing corn on the cob: Husk, remove silk and wash ears. Then scald in steam according to size of ear at largest end. Ears 1½ to 1¾ inches in diameter should be scalded 6½ minutes; those 2 inches 8½ minutes; larger ears 10½ minutes. If boiling water is used instead of steam cut down the time a half minute. After scalding, cool ears in very cold water and drain. Then wrap each ear individually in cellophane and package several of the wrapped ears together with locker paper. Freeze and store at zero degrees F., or lower. Thaw frozen corn before cooking for best results.

#### Fire Company Meeting

The Annual Meeting of Daniel C. Roberts Fire Company will be held at the Hose House in Alderson Friday, August 16, at 8 P.M.

### LEGAL

#### NOTICE

NOTICE is hereby given, pursuant to the provisions of the Act of Assembly of June 28th., 1917, P.L. 645, and its amendments and supplements, of intention to file in the office of the Secretary of the Commonwealth, Harrisburg, Pa., and in the Office of the Prothonotary of Luzerne County, Wilkes-Barre, Pa., on Wednesday, August 21st., 1946, an Application for a Certificate for the conduct of a business in the mining, stripping, preparation and selling coal, reclaiming coal from coal banks, contracting with others for said work and doing a general contracting business in Luzerne County, Pennsylvania, under the assumed or fictitious name, style and designation of "Melrose Contracting Co." with its principal place of business at 27th and North Church Streets, Hazleton, R.D., Hazle Township, Luzerne County, Pennsylvania. The names and addresses of the persons owning or interest in said business are:

### LEGAL

John E. Chisnell, 722 North Vine Street, Hazleton, Pa.; Kathryn B. O'Hara, 528 Grant Street, Hazleton, Pa.; Isabelle Chisnell, 594 North Church Street, Hazleton, Pa.; and Elizabeth Dougherty, 566 North Vine Street, Hazleton, Pa.  
MARTIN H. GORMLEY,  
Attorney at Law,  
Hazleton, Pa.

#### LEGAL NOTICE

Sealed proposals will be received by the Controller of Luzerne County at his office at the Court House, Wilkes-Barre, Penna., until 10:00 A. M., Tuesday, August 20th, '46, for furnishing Luzerne County with:

Relocation and grading of a portion of the Pittston Township Road, known as Lidy's Road.

All in accordance with specifications on file in the office of the County Engineer, Court House Annex, Water St., Wilkes-Barre, Penna.

Proposals must be accompanied by a certified check, Bank Cashiers check or Trust Company Treasurer's check in the amount set forth in the specifications made payable to the Treasurer of Luzerne County.

Bid envelopes to be plainly marked with the name of items or articles for which bid is intended.

ROBERT H. STROH,  
Luzerne County Controller.

### LEGAL

#### LEGAL NOTICE

#### INVITATION TO BID ON TRUCKING OF MATERIAL—LIME

The Luzerne County Agricultural Conservation Committee will receive sealed bids in their office located in 1213 Deposit & Savings Bank Bldg., Wilkes-Barre, Pa., for delivering 6,000 tons, more or less, of pulverized limestone in bags from designated sidings in the county to farms in Luzerne County.

The County Committee reserves the right to reject any or all bids. For further information, any interested bidders may contact the office of the County Committee at the above address. All Bids must be in the hands of the County Committee by Wednesday, August 14, at 10:00 a. m.

#### LUZERNE COUNTY AGR. CONS. ASSOC. COMMITTEE,

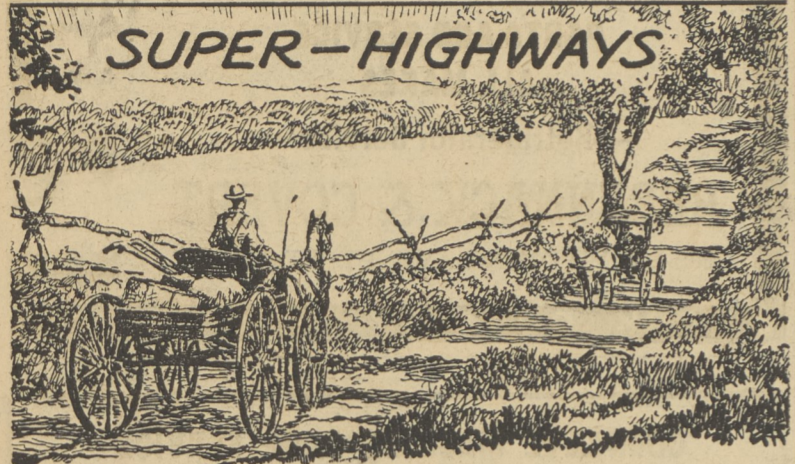
F. R. Searfuss, Chairman,  
R. H. Fullmer, Vice Chairman,  
William Sommers, Regular Member.

#### Gas on Stomach

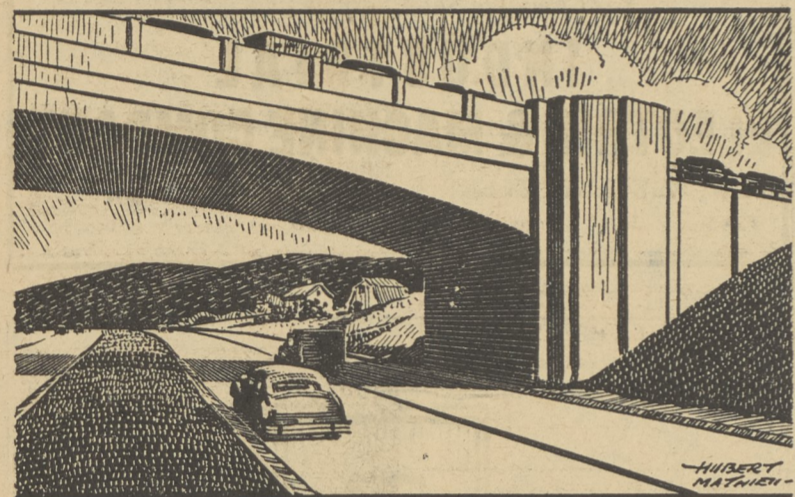
Relieved in 5 minutes or double your money back  
When excess stomach acid causes painful, suffocating gas, sour stomach and heartburn, doctors usually prescribe the fastest-acting medicines known for symptomatic relief—medicines like those in Bell's Tablets. No laxative. Bell's brings comfort in a jiffy or double your money back on return of bottle to us. 25c at all druggists.

### OUR DEMOCRACY

By Mat



THE ROADS OUR FATHERS BUILT SERVED THEM WELL, BUT TO MEET THE NEEDS OF AMERICA TODAY, WE ARE ENGINEERING A NEW CONCEPT OF HIGHWAY CONSTRUCTION—BUILDING FOR GREATER EFFICIENCY AND SAFETY—FOR SWIFTER TRANSPORT.



THESE NEW HIGHWAYS ARE IMPORTANT ARTERIES IN THE DISTRIBUTION SYSTEM OF OUR COUNTRY, BUT BEYOND THAT, THEY CREATE BROADER HORIZONS FOR LIVING—TEND TO BRING PEOPLE OF ALL SECTIONS CLOSER TOGETHER IN UNDERSTANDING AND APPRECIATION OF OUR DEMOCRACY.

### THE MASSEY-HARRIS Forage Clipper

**CORN ATTACHMENT**

**PICK-UP ATTACHMENT**

**CUTS . . . CHOPS . . . LOADS ANY HAY OR ENSILAGE CROP**

Haying season doesn't have to mean long tedious hours in the field cutting, raking and loading your forage crops in 3 individual operations. There's a new and better way to handle hay and ensilage . . . the Massey-Harris Forage Clipper way. Another member of the famous "Clipper" family, built up to its job—better-built . . . better-engineered, the Forage Clipper steps in to handle your forage harvest in one speedy, economical field operation.

Three machines in one—the Forage Clipper cuts, chops and loads any hay or ensilage crop reducing time in the field and handling a job that formerly required as many as three and four men. With your rack hitched behind and the elevator pivoted for rear delivery one man operates the Forage Clipper easily. You'll like the smooth effortless way this new "Clipper" handles your hay and ensilage. . . what's more, you'll pocket the profit ordinarily lost in time and labor.

Windrowed hay is no problem to the Forage Clipper. With pick-up attachment installed, cured hay

is speedily chopped and loaded. The elevator pivots either to the rear for one man operation or to the side for loading trucks.

To handle ensilage, a corn attachment bolts directly to the regular table of the Forage Clipper. The snouts travel close to the ground . . . cuts stalks at the base, leaving fields clean and ready for plowing. Ears, leaves and stalks are chopped and delivered to the rack or truck in lengths from ¾" to 1½" depending upon the speed of the cylinder. For complete data and your copy of illustrated folder on the Forage Clipper, be sure to see us next time you're in town.

LET US TELL YOU THE FULL STORY

Charles H. Long  
Sweet Valley, Pa.

### THESE WOMEN!

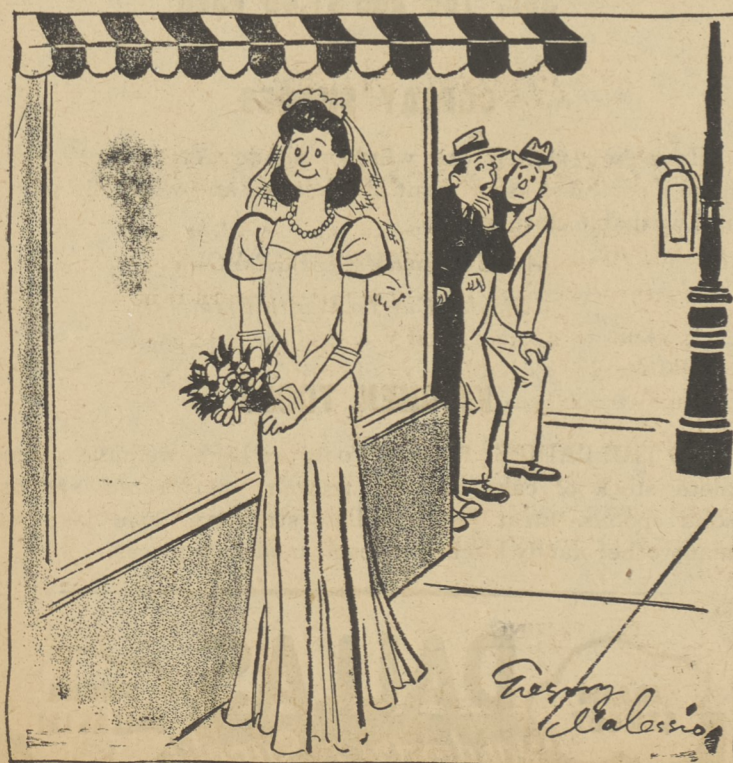
By d'Alessio



"Complete reconversion can't come overnight—it took me years with my husband!"

### THESE WOMEN!

By d'Alessio



"My blind date DID say she would be dressed in white, but . . . !"

### MARY WORTH'S FAMILY



"PEARS LIKE YOU DIDN'T STOP KLEEK IN TIME, TOM! THAT BOMB STARTED A WHOPPER OF A FIRE—BUT IT DON'T SEEM TO BE ONE OF THE MAIN BUILDINGS!"



LOOK! THE WIND CARRIED THE KITE CLEAN OVER THE POWDER MILL GROUNDS! . . . AND DROPPED THE BOMB ON MARY WORTH'S OLD FARM!



CONNIE—YOU'RE ALL RIGHT—?



I WAS—TILL YOU CAME ALONG AND CRACKED A FEW OF MY RIBS, MR. KANE!

### MARY WORTH'S FAMILY



HERE'S THE STORY OF LEW KLEEK'S ATTEMPT TO BLOW UP THE POWDER PLANT, CONNIE! HALF OF PAGE ONE—"BY CONSTANCE BARCLAY!"



I'M BURSTING WITH PRIDE, TOM! BUT IT'S TOO BAD WE COULDN'T RUN A PICTURE OF THE FBI MEN LOADING MR. KLEEK ON THAT PLANE!



YOU'RE PLAYING IN THE JOURNALISTIC BIG LEAGUE NOW! SOME DAY YOU'LL PROBABLY BE FILLING AN EDITOR'S SHOES!



I THINK I'D RATHER BE DARNING AN EDITOR'S SOCKS!