

Come to Church for Holiday Services

Elaborate Programs Are Prepared By All Churches For Christmas

Deeper Significance Of Yuletide Will Attract Hundreds This Year

Religious observance of the holiday season will see its climax in traditional Christmas services tomorrow night and Christmas day in all of the churches of this area. To the youngsters with visions of sugar plums, recitations, carols and cantatas it will be the greatest day of the church year, but to the older folk it will have a deeper significance than any Christmas in many years.

There is a joyous spirit in the air and a brave and defiant desire in home decoration and out-door lighting to make the season unusually festive, but there is a deeper uncertainty and apprehension that makes more mature minds seek the reassuring influence of the Christ child. For this reason the churches of this region have made greater preparation and expect larger attendances than at any time during the past score of years.

St. Paul's Lutheran

Christmas Day will be ushered in at St. Paul's Lutheran Church with Christmas evening midnight vigil services, December 24, at 11 p. m. The service will be preceded by a three quarter hour Christmas carol broadcast from the church tower by an amplification system especially installed through the courtesy of George Stevens. Beautiful reproductions of the chimes of Europe and America will be played. The program should be heard over the whole of Shavertown and Dallas Township. At the service, Holy Communion will be administered and the sermon subject will be "How Far To Bethlehem Town."

The Christmas Sunday School program will be held on Christmas Day at 6:30 p. m. in the church auditorium. It will consist of recitations and songs by the younger children of the Sunday School. Taking part are: Frederick Malkemes, Jr., Beatrice Ell, Elizabeth Dierolf, Lee Stocum, Jean Franklin, Carol Lee Thomas, Marilyn Lundy, Donald Hinkle, Kenneth Thomas, Elizabeth Ann Siperko, Nancy Streader, Carl Malkemes, James Owens, Ralph Ell, William Winters, Barbara Franklin, Esther Warren, Jacqueline Hinkle, Dorothy Winter, Barbara Jane Malkemes, Beatrice Adler, Donald Stocum, Gail Gallagher, Margaret Malkemes, Nancy Fahringer, Ruby Graves, Beverly Morgan, Janice Shrey, Nancy Lozo, Robert McMichael, Regina Siperko, Theodore Hinkle, Kenneth Malkemes, Robert Adler, Walter McMichael, Robert Lozo, William Morgan, John Cottle, Doris Kemmerer, Nancy Ness, Beverly Jones and Helen Siperko.

St. Therese's

The mid-night mass on Christmas Eve in Catholic churches the world around is noted for its symbolism and beauty. It is equalled only by Easter, the other outstanding day on the church calendar. The high mass at St. Therese's church, Shavertown, will be sung by Rev. Harold G. Durkin. The church will be beautifully decorated with holly and evergreens at the altars. The crib depicting the birth of Jesus with the kneeling figures of those who were present will be at the front of the church. The congregation of St. Therese's has extended a hearty welcome to all non-Catholics to attend this beautiful service.

A program of carols will be sung before the service, followed by Asperges by Montani; Missa Salvi Regina—Stehle; Offertory, Adeste Fidelis, and Recessional Exultate—Kreckel.

Masses on Christmas day will be at 8:30 followed by a Christmas party for the children of the parish. At 9:30 there will be a special mass followed by a Christmas party for children from the Harvey's Lake region. There will be a third mass at 10:30. Because of alterations at

IMMLER THEATRE DALLAS, PA.

FRIDAY AND SATURDAY
"City For Conquest"
with James Cagney

MONDAY and TUESDAY
★ DOUBLE FEATURE ★
"Wagons Westward"
with Chester Morris
— and —
"River's End"
with Dennis Morgan

WEDNESDAY and THURSDAY
★ DOUBLE FEATURE ★
"Saps At Sea"
with Stanley Laurel and Oliver Hardy
"Scatter Brain"
— and —
with Judy Canova

NEXT FRIDAY AND SATURDAY
"Down Argentine Way"
with Don Ameche and Betty Grable



THE NATIVITY

*This minor mystery of the winter morn
This star, this silver light that leads
To Bethlehem, this earthward trail of God man-born,
O shepherds see!*

*See not the ultimate thorn,
The flail, the lance, the nail, the eternal tree.*

*Learn, O shepherds, lorn on chill and stubble hills,
The Word flesh-born, the quickening melody
That bursts upon the many shuttered night, and fills
The crannied rocks with echoed joy.*

*Hear not
The shouted scorn beyond Gethsemane.*

*Peace, peace!
And when the mighty carols cease
Your covenanted hour, O shepherds keep,
For now again the Woman and the serpent meet,
Now Michael's hosts adore the Son of Man.*

*Kneel, kneel upon the scoured stable floor,
The ox, the ass, the bleating lamb, the sheep,
Shall share your awe before the manger throne.*

—BRUNINI

Hanson's Restaurant there will be no mass at Harvey's Lake on Christmas Day. The 9:30 mass at St. Therese's has been arranged for the convenience of parishioners who usually attend masses at Harvey's Lake.

Dallas

A pageant, "Christmas in Prophecy and Song", arranged and adapted by Jane LeGrand, will be an impressive part of the Christmas service held at Dallas Methodist Church this evening, Monday.

Taking part are: George Trimble, Jane LeGrand, William Baker, Jr., John Jewell, John Joseph, Ruth Kintz, Mrs. Charles Maxwell. Readers are Mrs. Machel Hildebrand and Joseph Fiske. William Brickel will be in charge of lighting effects.

The service will be in the form of a "White Christmas", all gifts to be wrapped in white. These will be sent to the Methodist Children's Home at Binghamton and money contributions will be used in the War Relief Program of the church.

Lehman

Carols will be sung and broadcast throughout the community by a new amplifying system Christmas Eve just before the Yuletide service begins in Lehman Methodist Church.

The program which consists of a variety of Christmas exercises and recitations will open with "The First Christmas", a pageant. Characters are: Wisemen, James Miers, Loren McCarthy, Theodore Parks, Harry Howell, William Major; Joseph, Hayden Ambrose; Mary, Dorothy Major; shepherd's wife, Nancy Parks; shepherd's boy, Billy Abbott; shepherd's girl, Anna Ide; angel, Arline Wentzel. Mrs. Arthur Major is director.

Members of Sunday School classes of Mrs. H. A. Brown and Mrs. Herbert Riley will present "A Christmas Star". Taking part are: Polly Cooper, Priscilla Abbott, Dorothy Ruck, Betty Ide, Charles Parks, Charles Snyder, Homer Major, Walter Elston, Emma Sutton, Flora Belle Brown, Edith Sutton, Dolores Reshki, Robert Ide, Leonard Ide, Billy Simms and Mildred Wentzel.

Bethlehem, a holiday skit, will be given by Mrs. William Major's class: Mary Lou Elston, Mary Major, Shirley Reshki, Phyllis Swan, Goldie Ide, Mary Edwards and Warren Major.

"Filling a Stocking for Santa Claus" will be given by Mrs. Frank Abbott's class: Priscilla Cooper, Anita Ambrose, Eleanor Ide, Shirley Reshki, Jane Brown, Dorothy Wentzel, Mary Adams, Arthur Carichner and Myron Keller.

There will be recitations by: Shirley Elston, Betty Jane Long, Tommy Elston, Hilda Reshki, Elaine Major, Alice Ide, Marcia Elston, Joanne Sidler.

"Behold I Bring Good Tidings", an anthem, will be sung by the choir; cornet solo, William Keffler; "Christmas Gratitude" Junior boys; "It Wouldn't Seem Like Christmas," Junior girls; "Seeing Santa Claus," by Goldie Ide, Phyllis Swan, George Lewis, Mary Major and Santa Claus.

Kunkle

The little folks of Kunkle Methodist Church will entertain the grown ups at a program of music and recitations at 8 o'clock this evening, Monday. Miss Dorothy Weaver, Miss Carolyn Brace, Miss Gertrude Smith and Mrs. Dorothy Dodson are in charge.

Those taking part are: recitations, Carol Jean Mitchell, Bobbie Mitchell, Dickie Mitchell, Fred Getz, Grace Klimick, Charlotte Boston, Nancy Martin, Kenneth Martin, Shirley Martin, Sherry Nulton, Nelson Ashburner, Donald Ide, Doty and Patsy Prutzman, June Boston, Calvin and Jerry Miers, Larry Shupp, Ernestine Martin, Nancy, Sue, Marion, David Parsons, Wilma Hess, Bobbie Henney, Janet Hess, Herbert Wertman, Mable Miller, Joan and Loren Kunkle, Jackie and Marie Robbins; songs, Phyllis Kunkle, Julia Updyke and Clarence Miers.

Trucksville

A Candle Light Communion Service will be held at Trucksville Methodist Church at 7:30 Christmas eve. A class of seven young people will become full members of the church at that time: Shirley Franks, Arline Shultz, Alice Sutton, Mildred Franks, Eddie Gemmel, Beatrice Dalley, Esther Blase and Edith Anderson.

Following the service, members of the Epworth League will sing carols around the neighborhood.

Idetown

Christmas services at Idetown Methodist Church will be held this evening, Monday, December 23. A splendid program has been arranged by Mrs. Anna Parks, Mrs. Ella Williams, Mrs. Zelma Agnew and Mrs. Vivienne Crosby, committee members. Joseph Clouser, music director at Lehman schools, is in charge of instrumental music.

Program: Carols, orchestra; Greeting Song, Beginners Group; recitation, Winnie Reese and Nancy Williams; Czechoslovakian carols, Beginners Group with solo parts by Shirley Williams and Nancy Wil-

liams;

Christmas Lullaby, Evelyn Keller; recitations, Doris Spencer, Catherine Smith, Dorothy Meade; song, "So Did I", Herbert Spencer, Harold Ide, Drew Crosby; recitation, Carlson Hadel, Ronnie Spencer, Bobbie Kreidler; Primary Group, "In Little Town of Bethlehem"; selection by orchestra; Girls' Chorus, "Rise Shepherds; Manger Scene, Ethel Ide; Junior Department, Walloon Carol; prophecy, Jack McDonald, George Peters; Choral Response, Junior Department; Intermediate Department, drama, "Quest of the East."

Shavertown

"The Christmas Voice", a modern Christmas drama, will be presented at the special service held Christmas evening at 10:30 in the Shavertown Methodist Church. William Davis is the director. Choir members sang carols on the streets of the community last evening.

Primitive Methodist

The Primitive Methodist Sunday School will celebrate Christmas eve with a drama, "Christmas In The Cobler Shop" given by the younger children. Mrs. Lewis Stritzinger is director. Christmas recitations and music will add variety to the program.



Old Time Christmas

GREETINGS

THIS is a good old fashioned American Christmas for all! Greetings of the season to you—and may all your wishes be fulfilled December 25th and ever after. Old time Greetings! In other words—a very merry Christmas to you and yours, when the holly brightens your windows.

+

ARTHUR A. MILLER

PYROFAX DISTRIBUTOR
320 Exeter Avenue West Pittston, Pa.

HOW TO BE YOUR OWN DECORATOR

"Mom, Why Can't We Decorate The House?"

Most of us have ideas of our own, especially the youngsters, about how to put up Christmas green, so fire away with yours, but just in case you need another idea or two—

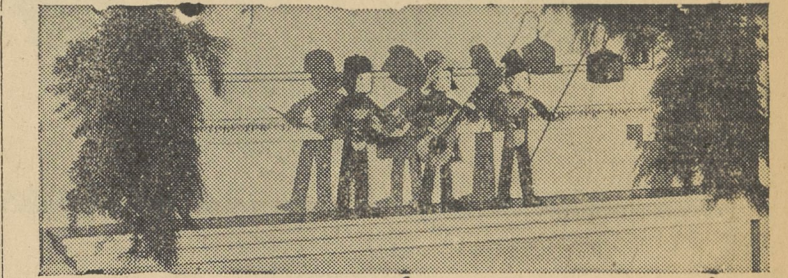


HELEN KOUES
Director of Good House-keeping Studio

Nicest, of course, are evergreen festoons and wreaths, with sparkle given by a cluster of silver balls at the top of the wreath, to replace the time honored bow and wired here and there to the evergreen rope. The picture tells its story of how to put it up either on the porch or the front door itself. On a covered porch, festoons of crepe paper in all red, all green, or green and silver are attractive, enlivened with sunbursts of cellophane.

Sleigh bells sewed to a strip of ribbon may be fastened to the top of a spray of holly or evergreen, real or artificial and hung on a nail, to the front door, instead of a wreath. And if you want to give your friends a thrill, conceal an electric lantern on the same nail which switches on when guests are expected.

Of course lighting the house is a very jolly thing to do. Have outside weather proof outlets as a permanent installation below the windows. The cost for two is between \$10 and \$15. Floodlight units, complete with waterproof cord, cost but \$3.75, each.



Gay carolers adorn a Christmas mantel

To light a Christmas figure or creche put a bulb on a cord in a vase and throw light up on the figure. Silver leaves in the vase give a lovely glow and conceal the source of light.



Evergreen festoons to decorate your doorway

Mantel decorations are especially nice and here is a novel one—three gaily dressed English carolers framed in a festoon of green. And best of all you can make these little figures yourself from bits of crepe paper, wire, and cotton for a few dimes. The bodies are made of wire, padded with cotton and wrapped with strips of crepe paper. The heads are cylinders of crepe paper stuffed with cotton with the features painted on. The mandolin player has rust-colored boots, a green tunic, and a sand-colored hat. The lantern bearer has a red cap, sleeves, and boots, a sand-colored body, and a blue belt. The carol singer reverses these colors with his hood and belt of red, boots and sleeves of blue, and sand-colored body.

To make the heads, make a tube of double thickness of peach-colored crepe paper 5 inches deep and 5 inches in circumference. Stuff the tube with cotton and tie it 1 1/2 inches from top and bottom with spool wire. Make features either with crayons or with watercolor paint. Tint cheeks with rouge. Cut off excess crepe paper at top of head. The feet are made by cutting two pieces of cardboard for soles, 2 1/2 inches long by 1 1/4 inches wide. Weight these with dress weights and fasten 9 inch lengths of No. 15 wire to each and fasten to excess paper below head. Now fasten another 9 inch piece of No. 15 wire below neck for arms, turning back 1/2 inch at each end for hands. Pad body, legs, arms, and feet with cotton and wrap with crepe paper. Dress figures as shown in double thicknesses of crepe paper in the various colors indicated.

The BOSTON STORE FOWLER, DICK AND WALKER



WISHES EVERYONE IN THE DALLAS AREA A MERRY CHRISTMAS AND A HAPPY NEW YEAR

+

Fowler, Dick and Walker