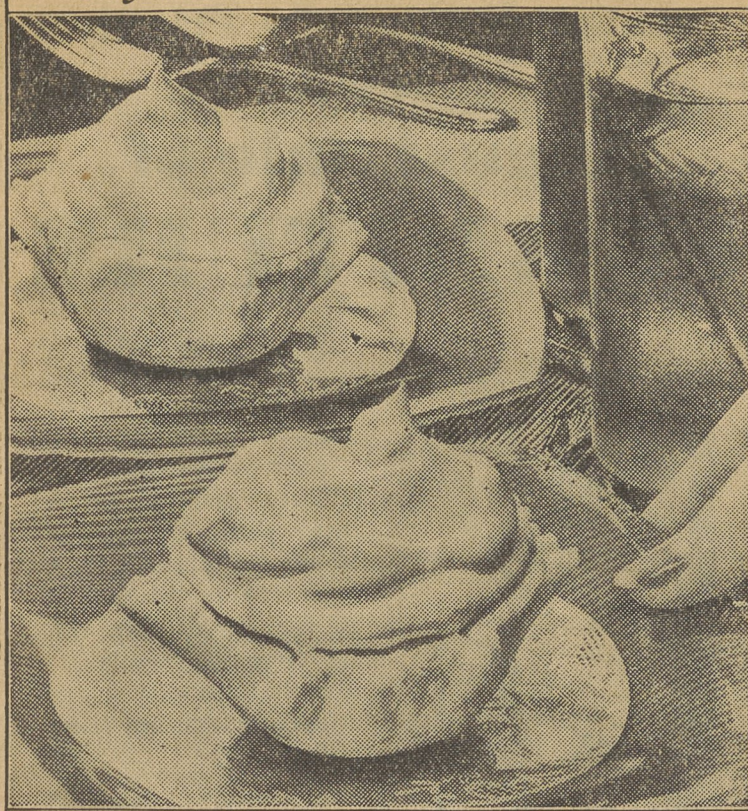


**Want an Ideal Summer Dessert?**  
Try these Lemon Soufflé Tarts



Flaky tart shells and delicate filling are both so tempting — so easy to make

Here's just the dessert you've been looking for! The feather-light soufflé filling will melt in your mouth. And its tart orange-lemon flavor tempts summer appetites! In fact, these attractive tarts dress up a meal any time of year.

This luscious dessert is easy on your purse, especially whenever eggs are cheap. Filling and tart shells are quickly made, too. It takes practically no time to cut in triple-creamed Spry, then roll out your pastry.

You don't even need patty pans. Just use a 5-inch coffee can cover to measure your rounds of pastry. Then fit them snugly over alternate muffin pans, pinching into 6 or 7 pleats, as shown in the illustration above. Just follow the easy directions and you'll be simply delighted how flaky and tender these tart shells turn out every time!

**Try fruit tarts, too**

These flaky tart shells are a life-saver in planning easy summer meals, without last-minute fuss. You can make a dozen or two at once and keep them fresh and crisp in a tightly covered jar. Then just before dinner, fill them with sweetened strawberries, raspberries, mixed fruit or apple sauce, and top with a bit of whipped cream.

As patty shells, too, they can't be beaten. Try serving them with creamed chicken, crab meat or creamed meat and vegetables—and watch the family go for them!

**Lemon Soufflé Tarts**

- 3 egg yolks
- 1/2 cup sugar
- 1/2 teaspoon salt
- 1/2 cup lemon juice
- 1 teaspoon grated orange rind
- 1 teaspoon grated lemon rind
- 3 egg whites, stiffly beaten
- 1/2 cup sugar
- 8 baked Spry tart shells

Beat egg yolks until thick and lemon-colored. Add sugar, salt, lemon juice and fruit rinds and mix well. Cook over hot water 10 minutes, stirring until thickened. Cool, stirring occasionally. Beat egg whites until stiff but not dry, and beat in sugar gradually. Fold into egg yolk mixture. Pile in baked tart shells, making attractive swirls on tops. Bake in hot oven (400° F.) until a delicate honey brown (about 5 minutes). Makes 8 tarts.

**Flaky Tart Shells**

- 2 1/2 cups sifted all-purpose flour
- 1 teaspoon salt
- 3/4 cup Spry (triple-creamed shortening)
- 5 tablespoons cold water (about)

Sift flour and salt together. Add 1/2 of Spry and cut in until mixture is as fine as meal. Add remaining Spry and continue cutting until particles are size of a navy bean. Sprinkle water, 1 tablespoon at a time, over mixture. With a fork, work lightly together until a dough is formed.

Roll dough 1/4-inch thick and prick with fork. Cut in 5-inch rounds and fit into patty pans or over outside of muffin pans. If muffin pans are used, fit dough snugly over pans, pinching into about 7 pleats. Bake in very hot oven (450° F.) 10 to 15 minutes. Makes 12 tart shells. (All measurements in these recipes are level.)

Response: Elmer F. Rouslts, Philadelphia.

Use of Honey in the Home: Mrs. J. V. Ellenberger, Troy.

Survey of Seasonal Conditions: E. J. Anderson, Ext. Apiarist, State College.

General Discussion. Basket lunch, 12:00 to 1:00. Afternoon session, 1:00 to 2:30. Honey Heating and Preparation for Market: Roy K. Howell, Saylorsburg.

Honey Marketing: Harry W. Beaver, Troy.

Address—The Economic Importance of the Honey Bee: Geo. H. Rea, Extension Apiarist, New York State.

Address: Rev. C. H. Frick, Pastor, Kingston Christian Church.

Review of Apiary Inspection: H. B. Kirk, Acting Apiculturist, Harrisburg.

Roll Call of Counties. Greetings from Representatives of Supply Companies. Games and contests, 2:30. Games and contests will be in charge of E. J. Anderson and J. D. Hutchison. Prizes will be awarded winners. The prizes are the contributions of various supply houses and queen breeders.

**Beekeepers Will Meet At Lake**

300 Expected From All Parts Of Pennsylvania

At least 300 beekeepers from all sections of the State are expected to attend the annual Field Day and Picnic of the Pennsylvania Beekeepers Association to be held Saturday, August 26 at Sordani's Picnic Ground at Alderson. The sessions will get underway at 9:30 a. m. and will continue until late in the afternoon. All local beekeepers, affiliated with the State Association or not, are invited to attend. The program will be as follows:

Morning, 9:30 to 12:00.

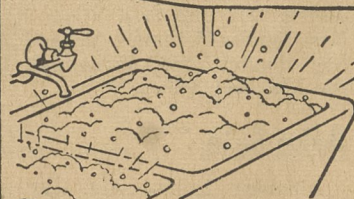
Presiding: J. S. Fleck, president, Pittsburg.

Get acquainted hour: (The first hour will be spent in renewing old friendships and making new ones, visiting and informal discussions).

Address of Welcome: J.D. Hutchison, County Agent, Wilkes-Barre.

**WHITER WASH Special!**

GOODNESS! THE NEW RICHER RINSO GIVES UP TO 3 TIMES AS MUCH SUDS AS THOSE OLD-TYPE SOAPS I'VE USED



IT'S THE SPECIAL "SUDS-BOOSTER" IN THE NEW 1940 RINSO THAT MAKES IT MORE ECONOMICAL THAN EVER



**New Rinso Washes Extra-dirty Clothes Snowy White**

AND LOOK AT THESE LINENS! AS MUCH AS TEN SHADES WHITER THAN LAZY BAR AND PACKAGE SOAPS GET THEM



**FOR TUB, WASHER, DISHPAN RICHER SUDS IN HARDEST WATER**

**...AND STOCK UP ON THESE OTHER FAMILY FAVORITES**

**AUNT JENNY'S FRIENDSHIP OFFER**  
6 TINTS for FROSTINGS and COOK BOOK ALL FOR 10¢  
AND DISC FROM A CAN OF SPRY COME IN AND GET DETAILS

**SPRY**  
"You'll Like Spry"

BLACK CHINA BRISTLES SOLID AMERICAN WALNUT  
Get this initialed CLOTHES BRUSH For only 25¢ and 3 Lifebuoy Box Fronts  
**LIFEBUOY HEALTH SOAP** "Beats The Heat"

**Mail Coupon Now!**

AUNT JENNY, BOX 19, NEW YORK CITY

Enclosed is ten cents and the disc from the top of a can of Spry. Please send me Six Tints for Frosting and Cook Book.

Please allow two weeks for Tints and Book to reach you.

WRITE PLAINLY

NAME \_\_\_\_\_  
STREET \_\_\_\_\_  
CITY \_\_\_\_\_ DP

**Luzerne**

- Kelly Street Market, 271 Kelly
- Karlotski Bros., 853 North
- J. Schoenwetter, 836 Bennett
- Thos. E. Hontz, 352 Bennett
- S. P. Frantz Sons, 276 Bennett
- V. Machinist, 303 Walnut
- Weisberger Food Market, 68 Main
- Lare's Market, 188 Main
- Cut Rate Meat Market, 84 Main
- John Rahl, 238 Chapel
- Reich's Market, 133 Main
- Quarteroni Brothers, 273 Kelly

**Swoyerville**

- J. M. Kaina, 343 Hughes
- George Lawrence, 329 Hughes
- H. Wolf, 258 Hughes
- J. J. Gavlick, 260 Watkins
- Abe Reiff, 238 Watkins
- New Center Market, 369 Main
- B. & O. Market, 246 Watkins
- Mike Hardy, 25 McHugh
- F. Licata, 2 Watkins
- Mrs. H. Wruble 1227 Main
- N. Gitlovitz, 109 Kosack
- Ferraro Brothers, 347 Main
- Reliable Food Market, 320 Hughes
- H. M. Wruble, 311 Hughes
- S. M. Feldman, 395 Main

At All American Stores

- Acme Markets
- A&P Stores
- A&P Super Markets
- Black Diamond Stores
- Blue Ribbon Stores
- Economy Stores
- Fairlawn Stores
- Wilco General Cash Stores
- In Towns Listed.

**Courtdale**

- Lare's Market, 191 Courtdale Ave.
- Novy Bros., 216 Courtdale Ave.

**Pringle**

- M. I. Gershen, 3 Cooper

**Hunlock's Creek**

- S. C. Groop
- M. L. Simons

Hobbs & Kendig, MUHLENBERG

- Pearl Habblett, CHASE
- Isaac's Store, KUNKLE
- Sam Koslofsky, HARVEY'S LAKE
- G. H. Bronson, SWEET VALLEY
- A. C. Woolbert, TRUCKSVILLE
- H. R. Garinger, ALDERSON

**Shavertown**

- Tip Top Market, Center Street
- Charles Gossart Main Street
- Werkeiser's Market, Main Street

**Dallas**

- D. R. Richards
- G. A. Frantz
- Joe Scherer

**TUNE IN THESE RADIO PROGRAMS FOR YOUR ENTERTAINMENT**

**LUX RADIO THEATRE**  
"Favorite of Millions"  
Every Monday — 9 P. M.

**RINSO PROGRAM**  
"Big Town"  
With E. G. ROBINSON and CLAIRE TREVOR "LIFEBUOY SHOW"  
Tuesdays — 8-9 P. M.

**RINSO PROGRAM**  
"Big Sister"  
Monday Through Friday  
10:30 A. M.

**SPRY PROGRAM**  
"Aunt Jenny"  
Monday Through Friday  
10:45 A. M.

**New Lux and Lux Toilet Soap Daytime Program**  
"LIFE AND LOVE OF DR. SUSAN"  
Monday Through Friday—  
1:15 P. M.

**Elkskin Flex-Shu FOR WORK**



**THRIFT SHOE STORES**  
106 MAIN ST. LUZERNE — 508 MAIN ST. EDWARDSVILLE