

PLEASANT HOMES by ELIZABETH BOYKIN

REMOVABLE UPHOLSTERY PLEASES FURNITURE LOVERS

THE REAL NEWS in the upholstery world is the removable cover . . . not a slip cover but a regular attached upholstered cover . . . not a slip cover, but for cleaning. The secret, of course, is in snaps and zips that attach the pieces of the cover to the frame of the chair, and the idea works quite as well for an all-upholstered chair as for the wood frame chair. When this becomes a reality in our homes, we'll buy both summer and winter coverings when we buy the chair, quite as a matter of course, and there will be easy ways of re-ordering new covers for old chairs. However, this has only just been introduced to the trade, so it will be later in the fall before you can actually say, "Send one out." What makes us mad is that no one thought of the idea long ago.

In the meantime, what about all the frayed and faded chairs in captivity that will have to "do" for quite a while to come? They need recovering, and most of us like to perk them up a bit. Then there are the rest of us who will go to market for the good old tried and true upholstery covers that are sewed and tacked on the same as always. For fads may come and fads may go, but these continue to be favorites because of their good sitting. Our fashion points are meant to take in the world—of upholstery, so we hope you'll find here ideas that will fit your own particular problem.

Furniture coverings are going to be a bit plainer than they've been because walls and rugs are getting fancier. So you'll see many interesting plain-effect materials that are as fine as silk for decorating. But, of course, if your floor and walls are plain or fairly so, you'll still find plenty of flowered materials to bless yourself with. The plains will, however, steal the fashion picture, for they will emphasize new

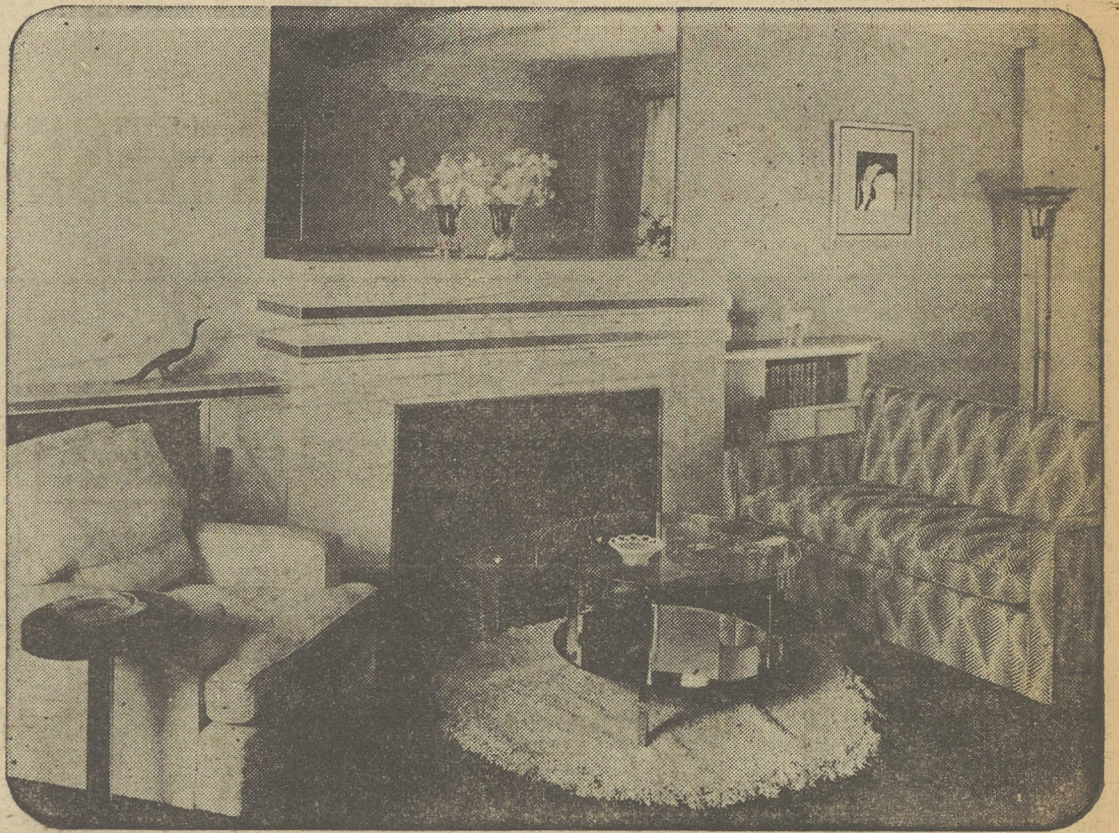
textures that are not so nubby and tweedy as formerly but of unusual surface effect. Sometimes this will be achieved by combinations of rayons with cottons, linens or wool.

Leather for upholstery is going to be the very last word, but you'll be seeing new surface effects. Cowhide stamped to look like ostrich, reptile or other unusual skins will be the smartest thing. Raw hides will be very much in, and interesting color effects are going to be featured, such as, white, sage greens, and all the range of the warm browns.

Stripes are literally everything in the figured world. Broad stripes (up to six inches in width!), medium stripes, pin stripes. They afford the effect of pattern without seeming to clutter up the picture. They can be used to introduce complementary or matching color, or just to introduce a dashing note of chic. So don't pass them up when you set out to shop for new upholstery fabrics.

Floral designs are definitely trending toward smaller scale designs as a reaction from the huge motifs that have been the rage these past seasons. And there are rather formal classic medallions, a great many floral stripes and perfectly lovely all-over sprigged designs. Backgrounds include some fine deep reds, many amber-to-russet tans, a deep dull green, a gunmetal tone that seems to go with anything. In the light tone grounds, white continues to hold its own. Pinks in the mauve-ish casts are still tops. The blues, as usual, take the center of the stage, but they're grey-blues or warm deep blues rather than the green-blues that have had things their own way so long.

Frimmings lend glamor and individuality to upholstered furniture. And a loose flounce is smarter around the bottom than a fastened or pleated one. This



MODERN LIVING ROOM

This interesting living room imparts the modern feeling through pale gray walls, a washed burgundy carpet, round rug in off-white, sofa in burgundy figured material and lounge chair in chartreuse velvet.

loose flounce will be finished with braid and will often have kick pleats at the corners only. Or it will be scalloped and edged with fringe (preferably boucle in an uncut loop). Hollow brass ball fringes are going to be turning up, too, says an important arbiter of decorative fashion, and the wood, glass and moss fringes are still going to be used with a flourish. They're unexpected and exciting on upholstered furniture, which is all the more reason for using them.

You'll find combinations of materials very much in—that is, a plaid for the seat and a plain for the rest of the piece. Also watch for shirred cushion tops or upholstered pieces for stylized rooms, because you're probably going to be seeing them about. Extra odd cushions in square, round or oblong shape continue to add fresh details to the decorative picture

and to provide a way to introduce or accent a color.

The main caution about upholstery this year is that the hale and hearty wear-like-iron materials aren't the whole show. They haven't the style that the less permanent materials have . . . any more than clod-hopper shoes can compete with a trim pair of open-toed sandals, even if the clod hoppers would wear out four or five of the cute little numbers. So don't go for the mohairs and brocatelles just because they are so sturdy. At least consider the lighter smarter fabrics that may have to be replaced before you're old and

gray, for isn't everything that's gracious a bit more trouble? You wouldn't expect your fall suit to do for ever and aye, would you? Then why isn't two or three years long enough for furniture covering?

IF YOU ARE interested in upholstering some of your old chairs, Mrs. Boykin will be glad to send you her bulletin "How to Upholster a Chair." Just send a stamped, self-addressed envelope with your request to TOWN, P. O. Box 721, Rochester, N. Y.

LAWNS PROVE HEALTHIER WHEN SEEDED IN AUTUMN

AUTUMN is lawn seeding time! The soil is warm, nights are cool, and rains are adequate. Healthier and more likely to survive the hot dry summer than spring seedlings are the grasses planted between mid-August and late October. They root more deeply and are less likely to fall victim to weeds, which are dormant in autumn. Too, they grow better in the cool, wet weather.

The success of a lawn depends, of course, on many factors—drainage, grading and leveling, fertile soil, preparation of the seed bed, and the use of high grade seeds. If the surface has been carefully graded, a good surface drainage will be assured.

Depressions, which are a real menace to the grass, must be carefully filled in before the

seeds are sown. The most satisfactory soil is a good garden loam. If this loam is not obtainable, sandy soil will be improved by the addition of clay; likewise, a heavy clay will benefit by the addition of sand.

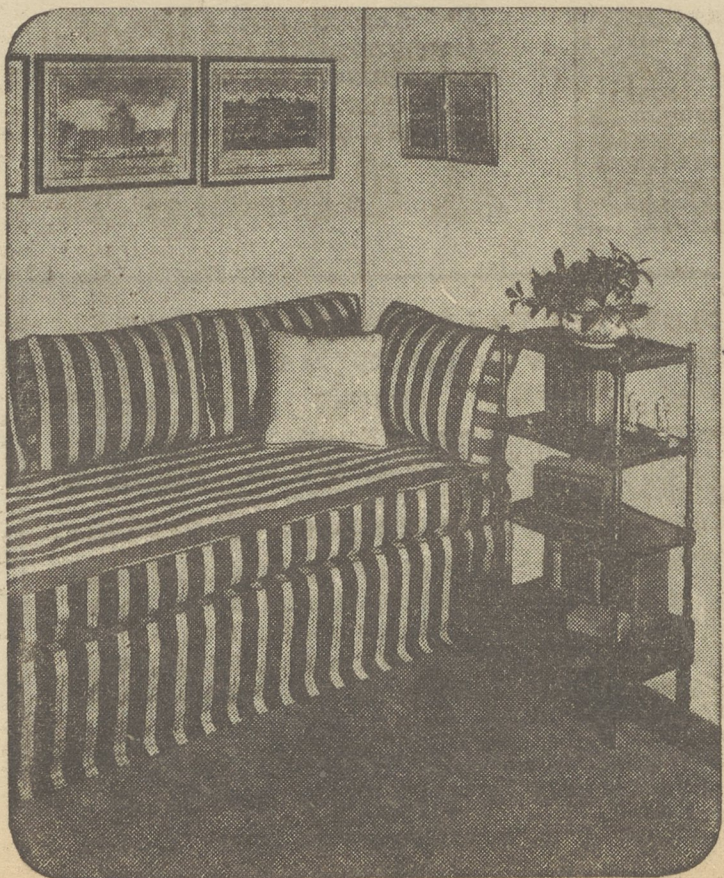
Two or three weeks before sowing time, give the seed bed its final preparation. A good seed bed is firm, with a finely pulverized surface. It should be thoroughly watered and occasionally stirred, so that any weeds which have started will be destroyed.

Apply a fertilizer a few days before sowing. Cottonseed meal, bone meal, sewage sludge, and poultry manure are all good because they are rich in nitrogen, phosphorous, and potassium, which help it grow early and vigorous. They should be applied at the rate of 40 to 50 pounds per thousand square feet.

Vitally important is the grade of seed you buy and the type of mixture. Mixtures are considered the most effective means of obtaining a quick thick turf, as they contain deep-rooting and shallow-rooting grasses, quick growers and slow growers. Therefore, let a reliable dealer advise you as to the combination exactly suited to your locality. Remember—a cheap grass seed has a large weed content.

Next week we will discuss the various seeds and their merits.

FILMS DEVELOPED AND PRINTED 25¢ Coin
Any 6 or 8 Exposure Roll, Velox, Deckledge Prints, DeLuxe Enlargement Coupon FREE! Special Prices on Candid Film.
PHOTO FINISHING SHOP
30 Genesee Trust Bldg., ROCHESTER, N. Y.
"Where Your Film Are Made"



STRIPED MOTIF

Stripes are the rage in decorating just now and nothing is smarter than a sofa with dynamic stripe coupled with a subtle all over patterned carpet.

HAS THIS year been a disappointment because flowers have not bloomed, fruits and vegetables have been inferior? TOWN'S Garden Editor will be glad to help you find the trouble. He will answer questions on the cultivation of plants, flowers, shrubs and lawns. He will also arrange to have catalogues sent you. Address all inquiries, enclosing a self-addressed stamped envelope: Garden Editor, TOWN, P. O. Box 721, Rochester, N. Y.

KILL BEDBUGS
quicker!
25¢
Use Peterman's Discovery! Destroys all bedbugs and their eggs. Quick. Certain. Safe. Economical. At your druggist's. Also 35¢ and 60¢ sizes.
PETERMAN'S DISCOVERY