

Pomona Grange Against FDR's Court Proposal

Want State To Drop Tax On Gas Purchased For Farm Use

MORE THAN 200 ATTEND

A resolution opposing the addition of more members to the Supreme Court was adopted by Luzerne County Pomona Grange, No. 44, at its meeting last Saturday at Mountain Grange Hall, Carverton.

The Grangers also adopted resolutions opposing Sunday fishing in Pennsylvania, opposing the diversion of funds from the State Motor Fund to other purposes and favoring a change in the Pennsylvania gasoline tax law to permit farmers to purchase gasoline for farm use tax free.

About 200 persons attended. John A. Hildebrand of Lehman Grange presided.

The afternoon public meeting was in charge of the lecturer, Mrs. Alfred W. Rice of Jackson Grange. The program included: Devotions, Mrs. Herbert Rieley, Lehman Grange; vocal trio, D. C. Smith, Wesley Schoonover and Stanley E. Van Scoy; invocation, Stanley Van Scoy; address of welcome, Porter H. Michael, master of the host grange; response, F. R. Searfoss, Jackson Grange; reading, "Grandma's Beau," Eleanor Kunkle, Kunkle Grange; vocal solo, Mrs. Corey Major, Lehman; music, Lehman High School orchestra, members, Miss Vera Whitesell, William Renshaw, John Dunger, Harold Brown, George Sweet, James Oliver, William Welsh and Philip R. Prutzman, leader.

Devey Is Speaker

Philip H. Devey of Tioga County, past master of the Pennsylvania State Grange, gave the address. Mrs. Thomas Krege, of Mill City, Lackawanna County, a member of the Pennsylvania State Grange Home Economics Committee, spoke on home economics.

Piano solo by Miss Rachel Risch, Carverton; vocal solo, Madelyn Wolfe, accompanied by Miss Betty Benscoter, Muhlenburg; "The Old-Fashioned Way," a one-act play, given by the following from Muhlenburg: Roscoe Benscoter, Betty Benscoter, Paul Meyers, Ethyle DeBoise, and the director, Mrs. Philip Dodson.

Evening Session

At the night meeting Ralph M. Sands, Mountain Grange, sang, accompanied by Mrs. John Bodle, and Andrew M. Hontz, of Muhlenburg Grange, gave a reading. The next meeting will be held with the Center Hill Grange on Saturday, June 12. Muhlenburg Grange was awarded the honor banner for the next quarter.

Wyoming County Degree Team, directed by Mrs. Gertrude Harding, initiated Mary Fowler, Mrs. Sheldon F. Gay, Max Leonard and A. H. Gay, Mountain Grange; Ethel DeBois, Betty Benscoter, Paul Snyder, Paul Meyers, Muhlenburg Grange; Mrs. William Gregory, Jackson Grange; and Paul Remington, Keiserville Grange, Wyoming County.

"Scenic Wall Paper" Is New Spring Craze

Scenic wall paper, depicting important events of the recent past and contemporary scenes done in the modern manner is one of the most interesting innovations which home decorators will introduce this Spring.

Pictorial wall papers representing authentically historic happenings were quite the last word in the 1860's. Modern designers have never attempted them before. One leading firm is showing an ambitious pattern which pictures with accurate detail the high spots of the whole New York skyline with the Battery and the Statue of Liberty at one end of the panel. Rockefeller Center in the middle, and Central Park and the Triborough Bridge at the other end.

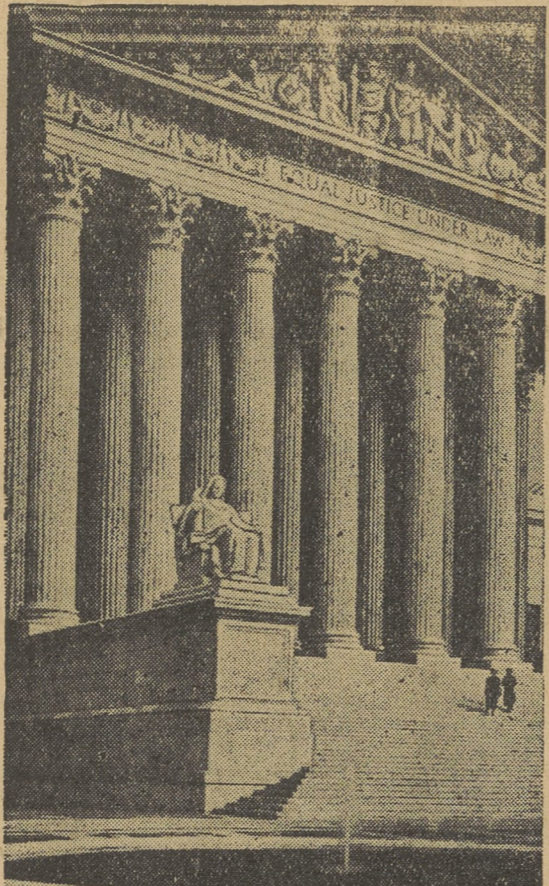
Rid Yourself of General Aches and Pains by Using

MUNYON'S Remedy for Rheumatic Fever Pains \$1.00
MUNYON'S Solidified Liniment50
MUNYON'S Laxative Pills25
Few Paw Brand25

At your druggist's or by mail, postage paid, on receipt of price. Booklet and Samples on request.

MUNYON REMEDY CORP.
Dept. 5 Scranton, Pa.

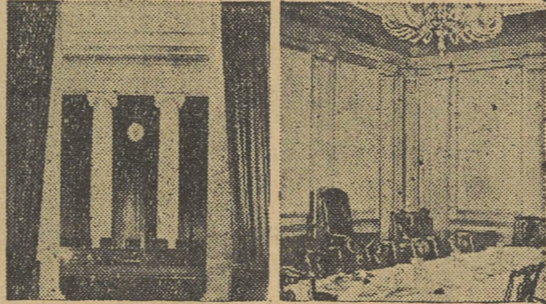
Supreme Court is Storm Center Of Historic Battle For Power



MAGNIFICENT SYMBOL OF THE COURT'S PRESTIGE: The main entrance to the U. S. Supreme Court building in Washington, D. C., now center of controversy raised by the President's Congressional message.



CHIEF JUSTICE Charles Evans Hughes administered the Oath of Office to President Franklin D. Roosevelt in 1937 inauguration ceremonies.



ONLY NINE CHAIRS: Photographs show (left) the Supreme Court Bench from the main entrance to the courtroom; (Right) The Justices' private dining room. Both bench and luncheon table provide places for only nine.



SPECIAL DIETS FOR JUSTICES: Each of the nine Justices has his noonday meal brought from his own home by his own retainer and uses his own china and silver. At left is Justice Cardozo's two plates of sandwiches; at right, silver of classic design and white china with floral border mark the place of Justice Van Devanter.

These Pictures Used Through Courtesy Of Life Magazine

Flaws In Popular Election System

Can't Tell A Man's Qualities By Seeing His Name On A Ballot

Many of Pennsylvania's cities and other local units are spending more money to operate their governments than they are able to raise in taxes. They are becoming increasingly dependent on the State and Federal government for funds.

For the expenses of governments are paid by taxing the citizens. Some taxes, such as those on incomes, inheritances, and profits, draw most heavily on persons who have more than the average amount of money. Others, such as those on gasoline, cigarettes, liquor, amusements, and other sales draw equally on all who purchase the items taxed.

Now both the local and the State Governments are finding it hard to raise

enough money through taxes to meet all their expenses, particularly since the spread of unemployment made it necessary to spend so much on relief and welfare. Taxes on real estate have always furnished the largest part of local governments' income but in recent years many property owners have been unable to pay their taxes, while the decline in real estate prices has made it necessary for tax assessments to be reduced in many sections. This means that the income from real estate taxation is much lower than it formerly was.

Those who spend this public money have a great responsibility. Who are they? Pennsylvania's State and local govern-

ments are largely carried on by officers who are either elected by the people or appointed by elected officials. A few cities choose their employees by means of civil service examinations. Popular election of public employees has its disadvantages, for voters cannot be expected to tell, simply by reading a name on a ballot, just how well qualified a candidate may be for specialized duties such as the handling of financial affairs or the building of good highways.

AN OPTICAL SERVICE
That Has Built Its Reputation on
CUSTOMER CONFIDENCE

REGISTERED OPTOMETRIST IN CHARGE

AS LOW AS
\$7.50 Complete

EYEGLASSES ON CREDIT

Meyer's
Jewelers and Optometrists
15 Public Square,
Wilkes-Barre, Pa.

If your eyes need attention, visit our completely equipped optical department. You can rest assured that you will be fitted properly. If glasses are necessary, you can get them now, and pay on our convenient Budget Plan—only 50c a week if you wish.

Dr. Brandon A. Gearhart,
Optometrist

YOU WERE RIGHT, MARY.

FOM-OL HAS MADE

MY HAIR AS CLEAN AS

A HOUND'S TOOTH... AND HANDSOME TOO!

Good looking hair is an asset to a man. It stamps him as a well groomed gentleman. Fom-ol gives a man's hair glowing health and handsome grooming through its amazing 2-fold power... it cleans and nourishes. Fom-ol is a rich, foaming oil shampoo which takes unkempt, sickly hair (man's, woman's or child's), and leaves it clean as a whistle and sparkling with health. Fom-ol is so economical; a little goes a long way. Ask your druggist for the regular 50c size. Or, write for a generous trial bottle, enclosing 10c to cover packing and postage.

FOM-OL

More than a shampoo... a treatment!

CLAIROL, INC.
132 West 46th St., New York, N.Y.

I enclose 10c for one trial size bottle of Fom-ol.

Name.....
Address.....
City..... State.....

Smut Worst Enemy Of Local Oat Crop

Hutchison Explains How Loss Can Be Reduced By Treatment

Smut is the worst enemy of oats in Pennsylvania. It reduces yields in fields planted to untreated seed by 2 to 3 bushels an acre, County Agent J. D. Hutchison reports.

Formaldehyde, a gas dissolved in water, has been found to be the most efficient material for treating the seed to control smut. The cost is only 2 to 3 cents an acre.

One pint of 40 per cent formaldehyde diluted with a pint of water is sufficient for 50 bushels of oats. The solution can be used in a small hand sprayer. The use of more than one pint of formaldehyde to 50 bushels may cause injury to the seed.

After the oats have been thoroughly cleaned with a fanning mill, they should be placed in a pile on a clean barn floor or canvas, or in a tight wagon box.

While one man shovels the oats from one pile to another a second man or boy can spray a little of the solution over each shovelful. Two strokes of the handle give about the right amount.

After all the oats are treated, they should be shoveled into a pile and covered with blankets or canvas, or with grain sacks sprayed on both sides with the solution. Allowed to remain covered for at least five hours, the oats may be bagged and drilled.

Mr. Hutchison recommends sowing the oats as soon as possible after treating. If held over two weeks they should be run through a clean fanning mill set at full draft. This will blow out surplus formaldehyde gas which otherwise might injure the seed.

Oats treated by this method which are not used for seeding may be safely fed to livestock.

Large Trailer Here

One of the largest truck-trailers seen in this section arrived on Monday from Hagerstown, Maryland, with a solid carload of lime and sulphur for Z. E. Garinger.

Every Thing for the Farm

Here are some of our lines

McCormick-Deering Farm Equipment
International Trucks
Meyers' Spray Outfits
Crane Silos
Star Barn Equipment
White Rock Lime and Limestone
Royster Fertilizers
Goodyear Tires
Ansbacher Insecticides (Lime and Sulphur Solutions)
Repairs for all types of Farm Machinery.

Milking machines, milk coolers, plows, harrows, tractors, garden tools—see this modern equipment on our floor now.

**Prepare Now For Our Big
SPRING OPENING**

Free movies, working demonstrations of farm equipment set up and running, luncheon. Be here on this date.

APRIL 9TH

Z. E. GARINGER
DALLAS PENNA.

THE DALLAS POST 1 YR.

AND

4 famous MAGAZINES

FRIENDS! We are combining our newspaper with these two great magazine offers, so that you can realize a remarkable cash saving on this year's reading. Either offer permits a choice of four top-notch magazines with our paper and, regardless of your selection, you will say it's a bargain.

The Economy Offer THIS NEWSPAPER, 1 Yr. AND 2 Magazines From Group A 2 Magazines From Group B

GROUP-A Check 2 magazines thus (X)

- American Fruit Grower - 1 Yr.
- Capper's Farmer - 1 Yr.
- Household Magazine - 1 Yr.
- Needlecraft - 1 Yr.
- Successful Farming - 1 Yr.
- Woman's World - 1 Yr.
- The Country Home - 2 Yr.
- Farm Journal - 2 Yr.
- Pathfinder - (26 issues)
- Breeder's Gazette - 1 Yr.

GROUP-B Check 2 magazines thus (X)

- American Poultry Journal 1 Yr.
- The Country Home - 1 Yr.
- Farm Journal - 1 Yr.
- Gentlewoman Magazine 1 Yr.
- Good Stories - 1 Yr.
- Illustrated Mechanics - 1 Yr.
- Leghorn World - 1 Yr.
- Mother's Home Life - 1 Yr.
- Plymouth Rock Monthly 1 Yr.
- Rhode Island Red Journal 1 Yr.

The Super-Value Offer THIS NEWSPAPER, 1 Yr. AND 2 Magazines From Group 1 2 Magazines From Group 2

GROUP-1 Check 2 magazines thus (X)

- American Boy - 1 Yr.
- Better Homes & Gardens 1 Yr.
- Christian Herald - 6 Mo.
- Flower Grower - 6 Mo.
- McCall's Magazine - 1 Yr.
- Motion Picture Magazine 1 Yr.
- Parents' Magazine - 6 Mo.
- Open Road (Boys) - 2 Yr.
- Opportunity Magazine - 1 Yr.
- Pictorial Review - 1 Yr.
- Pathfinder (Weekly) - 1 Yr.
- Romantic Stories - 1 Yr.
- Screen Play - 1 Yr.
- Sports Afield - 1 Yr.
- True Confessions - 1 Yr.
- Household Magazine - 2 Yr.
- Woman's World - 2 Yr.

GROUP-2 Check 2 magazines thus (X)

- American Poultry Journal 1 Yr.
- American Fruit Grower 1 Yr.
- The Country Home - 1 Yr.
- Farm Journal - 1 Yr.
- Gentlewoman Magazine 1 Yr.
- Good Stories - 1 Yr.
- Illustrated Mechanics - 1 Yr.
- Household Magazine - 1 Yr.
- Leghorn World - 1 Yr.
- Mother's Home Life - 1 Yr.
- Needlecraft - 1 Yr.
- Plymouth Rock Monthly 1 Yr.
- Rhode Island Red Journal 1 Yr.
- Successful Farming - 1 Yr.
- Woman's World - 1 Yr.
- Capper's Farmer - 1 Yr.
- Breeder's Gazette - 1 Yr.

THIS OFFER FULLY GUARANTEED!

Gentlemen: I enclose \$..... Please send me

THE ECONOMY OFFER THE SUPER VALUE OFFER

I am checking above the four magazines desired with a year's subscription to your newspaper.

Name.....
Post Office.....
R.F.D..... State.....

First National Bank
PUBLIC SQUARE
WILKES-BARRE, PA.

Capital—Surplus \$ 2,250,000
Resources \$12,412,000
United States Depository

OFFICERS:

Wm. H. Conyngham President
Francis Douglas .. Exec. Vice-Pres.
Chas. F. Huber 1st Vice-Pres.
M. G. Shennan Vice-Pres. & Cashier

DIRECTORS:

Chas. N. Loveland
Fred O. Smith
William S. McLean, Jr.
Wm. H. Conyngham
Richard Sharpe
C. F. Huber
Francis Douglas
T. R. Hillard
Edward Griffith
Wm. W. Inglis
M. G. Shennan

2% Interest On Savings
Safe Deposit Boxes For Rent

4th-SHAFFER'S BIG HORSE AND MULE SALE-4th

At My Stock Yards on Main Highway From Berwick to Bloomsburg, on

MONDAY, MARCH 22nd, 1937
AT 12 O'CLOCK NOON

32--Express Load Iowa Horses and Mules--32

Here comes another express load of those famous Iowa Horses and Mules that I myself have bought. No use to describe this load as they are nearly all 1937-1938 models, the best that can be had. Buying a horse or mule is just like your wife wanting a good dress made—she wouldn't go to a harness maker or a shoemaker to get a job of this kind done; she would go to an experienced dressmaker where she would get quality, style and service. Of course if she isn't very particular and can put up with most anything, then the shoemaker could do the job. Buy your horses where you get quality and do not let a shoemaker serve you when he does not have what you would like to buy and you know that Shaffer has and sells the kind that will please you. Buy them from the Old Reliable Dealer who has served you for 31 years. I hitch and show all horses and mules the day before sale and on day of sale.

35 SECOND-HAND HORSES

Some good and some not so good; one to suit everybody's pocketbook. Times change, but my guarantee does not. Free delivery for all horses and mules. Horses, Mules, Cattle and Hogs taken in same as cash. Let me know before my sale what you have to dispose of and I will see you and your stock.

Express Load Will Arrive 2 Days Before Day of Sale

Some Cows, 15 Big Shoats, 20 eight weeks old Pigs will be sold. Horses and Mules at private sale every day. New Team Harness, parts of Harness and collars for sale at all times. \$5.00 IN CASH will be given away every hour, on the hour. Be sure to be with me on the above date as I need your help.

TERMS—Cows, Pigs, Harness and all parts of Harness, Cash. Horses or Mules, \$75.00 or less, Cash; all over \$75.00, two-thirds cash on day of sale or delivery, balance 3 months with interest from date. If paid in 2 months, no interest charged. 3% off on amounts over two-thirds of purchase price, if paid in full.

RUNYAN & TROY, Auctioneers. ELMER SHAFFER.