

### County's Return On A. A. Tax About \$1 For Every \$270 Given

TAXPAYERS PAY \$2,500,000; FARMERS GET \$9,500

The 445,200 men, women and children who live in Luzerne county paid \$2,582,160.00 in Agricultural Adjustment Administration Processing Taxes from July 1, 1934 to December 31, 1935 and the farmers of Luzerne county received \$9,500.88 in return—a ratio of about 270 dollars in taxes for every dollar of benefit.

The estimated tax burden of consumers—and every man, woman and child in the county is a consumer—is based on figures from the Bureau of Internal Revenue of the United States Treasury Department. The average cost per capita resulting from Processing Taxes is shown at \$3.85 per year. During the one and one-half year period from July 1, 1934 to December 31, 1935, the 445,200 persons in Luzerne county paid approximately \$2,582,160.00 in this type of taxes alone.

A report of the United States Department of Agriculture shows that Pennsylvania farmers received \$3,282,107.11 in A. A. benefits during this same period. Of this sum, \$9,500.88 came to the farmers of Luzerne county. The payment on account of "wheat"

was \$7,822.19 and on account of "corn-hogs" was \$1,678.69.

These same figures of the United States Department of Agriculture and the United States Treasury Department show that the 9,600,000 consumers in Pennsylvania paid Processing Taxes in the amount of \$55,000,000.00 during the period from July 1, 1934 to December 31, 1935. The \$3,282,000.00 which came back to the farmers of Pennsylvania represents a state-wide ratio of about seventeen dollars in taxes for every dollar of benefit.

Columbia county consumers paid \$283,040.00 in taxes and farmers received \$34,761.79 in return—a ratio of about eight dollars in taxes for every dollar of benefit.

Consumers in Carbon county paid

\$367,720.00 in taxes and farmers received \$1,883.06 in return—a ratio of about 265 dollars in taxes for every dollar of benefit.

Neither Lackawanna county nor Wyoming county farmers received any relief under the A. A. program although thousands of dollars in taxes were paid by consumers under the Processing Tax law.

### Thirty-Two Millions

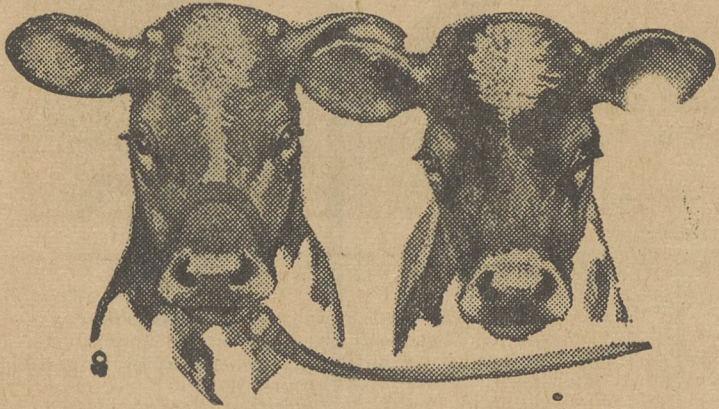
Federal farm credit agencies have \$32,019,808 outstanding in 17,923 loans to Pennsylvania farmers and farm co-operatives, according to reports received by J. Hansell French, State Secretary of Agriculture.

### Half Around World

James D. Hutchison, Luzerne County Farm Agent, travelled nearly 14,000 miles, more than half the distance around the world, in his work last year. He made 514 farm visits, 735 telephone calls and wrote 664 letters.

### Down \$5,000,000

The total value of all farm land in Luzerne County in 1930 was \$17,994,217. Last year it was \$12,351,826. Despite this, industrial employes in increasing numbers are turning to farming in the county.



## FRESH

JERSEY, GUERNSEY & HOLSTEIN

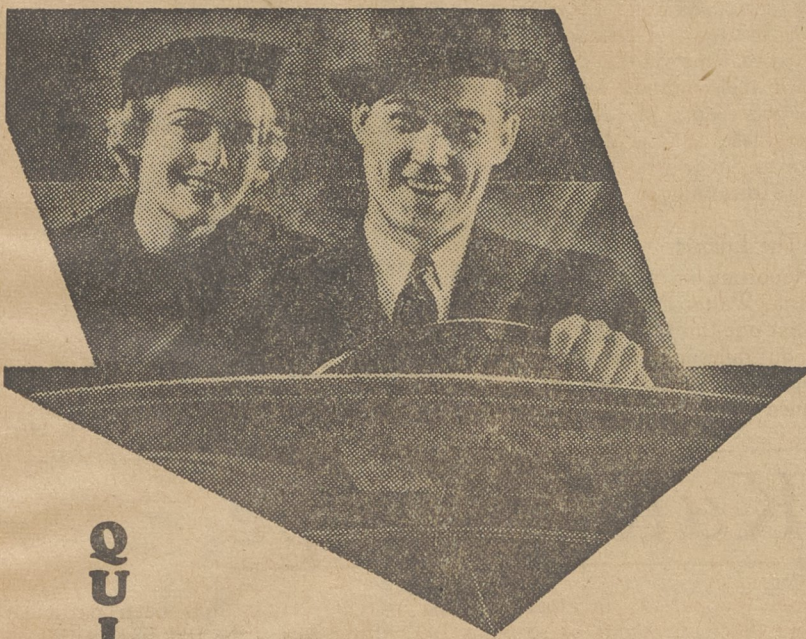
## COWS

WILL SELL OR TRADE FOR BEEF

Highest prices paid for beef cows and calves. If you have stock to sell or trade telephone us at Dallas 220 and we will call promptly to quote you a fair price.

# LEONARD MACHELL

'PHONE DALLAS 220



QUICK SERVICE

### HERE'S HOW TO KEEP YOUR CAR RUNNING SMOOTHLY

1. Drain and refill your crankcase with the proper grade of Sunoco Mercury-Made Oil. Our attendant will be happy to show you our indicator chart.
2. See that all essential parts are well greased so they will run smoothly at all times. Let us inspect your transmission and differential before trouble starts..

We carry the most complete stock of automobile and truck accessories back of the mountain.

SPECIAL THIS WEEK

**G&J TIRES** 4.75 x 19 **\$4.50**

**ADD WOOLBERT**  
DALLAS, PA.

# Astounding! these VALUES

## WE CHALLENGE COMPARISON with ANY TIRE PRICES ANYWHERE

Quality of these tires is superior to any and beyond comparison.

The Only Safe Tires For All Year Driving

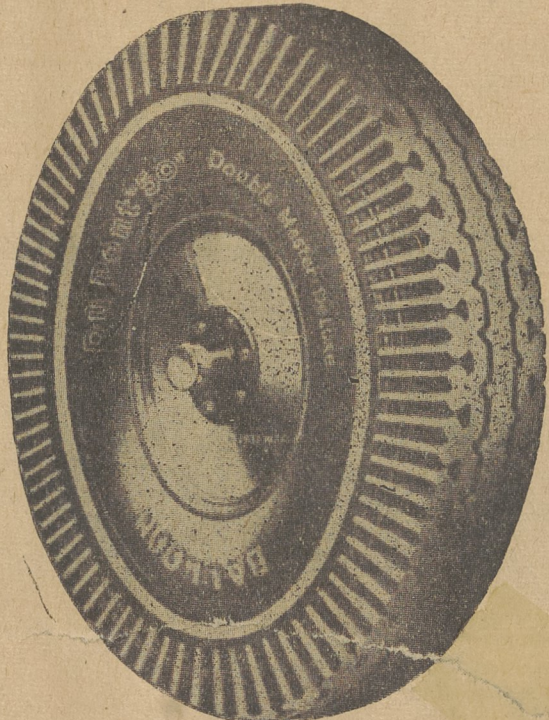
### Du Pont "50"

DOUBLE MASTER DELUXE

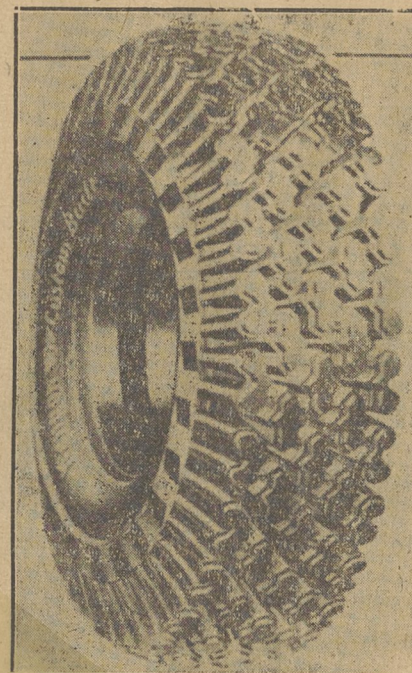
PASSENGER—SUPER 6 AND SUPER 8

### Kenyon Custom Built

PASSENGER—BUILT TO CUSTOM SPECIFICATION IN EXTRA HEAVY DUTY AND SUPER HEAVY DUTY—6 PLY TRUCKS—HAND MADE CUSTOM BUILT UP TO 18 PLY.



DUPONT



KENYON



WESTMINSTER AT KENYON PRICES

### Dupont Price List

	SUPER SIX	SUPER EIGHT
29x4.50x20	\$ 6.08	\$ 7.69
30x4.50x21	6.39	7.89
28x4.75x19	6.93	8.18
29x4.75x20	7.59	8.80
29x5.00x19	7.99	9.30
30x5.00x20	8.19	9.46
27x5.25x17	8.47	10.01
28x5.25x18	8.69	10.32
29x5.25x19	9.13	10.54
30x5.25x20	9.47	10.92
31x5.25x21	9.69	11.32
27x5.50x17	9.81	11.22
28x5.50x18	10.10	11.82
29x5.50x19	10.26	11.66
30x5.50x20	10.70	12.33
6.00x16	10.71	
29x6.00x17	10.96	12.26
30x6.00x18	10.93	12.29
31x6.00x19	11.20	12.79
32x6.00x20	11.53	13.13
33x6.00x21	12.01	13.50
34x6.00x22		13.68
35x6.00x23		14.30
6.50x16	11.80	
29x6.50x17		14.12
30x6.50x18		14.91
31x6.50x19		15.07
32x6.50x20		15.27
31x7.00x17		15.74
32x7.00x18		15.45
33x7.00x19		15.67
34x7.00x20		15.79
35x7.00x21		17.08
31x7.50x17		24.17
32x7.50x18		24.21
33x7.50x19		25.34

### Kenyon Custom-Built Price List

	4 PLY	6 PLY
29x4.50x20	\$ 6.42	\$ 7.99
30x4.50x21	6.90	8.28
28x4.75x19	7.57	8.58
29x4.75x20	7.96	9.24
29x5.00x19	8.35	9.76
30x5.00x20	8.65	9.93
27x5.25x17	8.89	10.51
28x5.25x18	9.12	10.83
29x5.25x19	9.58	11.04
30x5.25x20	9.94	11.47
31x5.25x21	10.17	11.88
27x5.50x17	10.30	11.78
28x5.50x18	10.62	12.21
29x5.50x19	10.77	12.24
30x5.50x20	11.23	12.94
6.00x16	11.27	12.97
29x6.00x17	12.05	13.02
30x6.00x18	11.47	12.90
31x6.00x19	11.76	13.43
32x6.00x20	12.10	13.78
33x6.00x21	12.61	14.17
34x6.00x22		14.36
35x6.00x23		15.01
6.25x16	11.77	14.32
6.50x16	12.51	13.93
29x6.50x17	13.91	14.92
30x6.50x18	14.43	15.65
31x6.50x19	14.78	15.82
32x6.50x20	15.12	16.03
31x7.00x17		16.57
32x7.00x18		16.22
33x7.00x19		16.45
34x7.00x20		16.57
35x7.00x21		17.93
31x7.50x17		25.37
32x7.50x18		25.42
33x7.50x19		26.60

### Inner Tubes 79c up

## TRUCK TIRES

	Dupont	Custom Built—Kenyon
30x5 8 ply	15.90	16.90
30x5 6 ply	13.50	14.85
32x6 8 ply	22.59	23.74
32x6 10 ply	26.52	27.94
34x7	37.09	38.77
36x8	51.00	53.32
40x8	55.96	57.45

### TRUCK BALOON

	Dupont	Kenyon	Mason
6.00x20 . . . 8 ply	14.16	14.96	11.36
6.50x20 . . . 8 ply	18.40	18.91	15.04
7.00x20 . . . 8 ply	24.23	24.77	20.07
9.75x20 . . . 8 ply		63.33	53.44

Trade In Allowance As Much As 25% For Your Old Tires

# HILLSIDE TIRE SERVICE

TRUCKSVILLE, PENNA.

Two miles from Luzerne on Harvey's Lake Highway