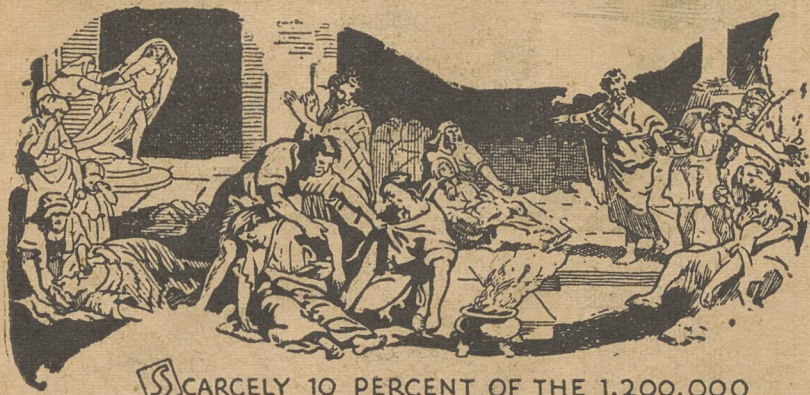
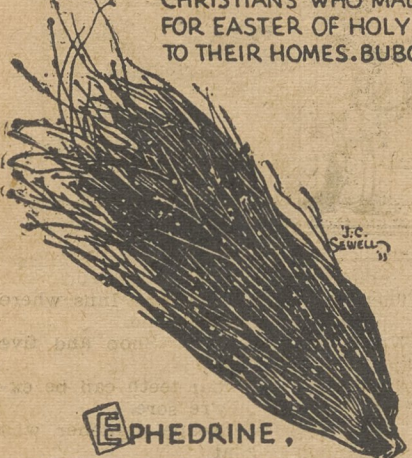


HEALTH ODDITIES

by DR. O. J. Waring
RESEARCH DIRECTOR,
A. D. S. FELLOWSHIP



SCARCELY 10 PERCENT OF THE 1,200,000 CHRISTIANS WHO MADE THE PILGRIMAGE TO ROME FOR EASTER OF HOLY YEAR 1348, LIVED TO RETURN TO THEIR HOMES. BUBONIC PLAGUE STRUCK THEM DOWN.



EPHEDRINE.

ONE OF THE MOST VALUED OF THE "NEWER" DRUGS, WAS KNOWN AND USED AS A THERAPEUTIC HERB IN CHINA 5000 YEARS AGO



E.M. (Lefty) MARSH, PINE ISLAND, MINNESOTA, CLAIMS TITLE OF "WORLD'S BIGGEST DRUGGIST" - WEIGHT-362 POUNDS

© 1933, American Druggists Syndicate, New York, N. Y.

ECONOMIC HIGHLIGHTS

Happening that effect the Dinner Pails, Dividend Checks and Tax Bills of Every Individual. National and International Problems Inseparable From Local Welfare.

For a good many months we've been talking about recovery. At first, that talk principally represented optimism. Then some actual signs of recovery began to appear. The indexes took on a more cheerful tone. Now there's no longer any question about it. Recovery is here. There's hardly an industry that isn't feeling new blood in its veins these days.

A recent New York Times' survey is a good example. It is based on six of the most trustworthy barometers—automobile production, steel mill activity, lumber production, electric power output, freight car loadings and cotton forwardings. On March 18 the combined index stood at 60.0. On July 1 it had reached 97.3—a gain of better than 50 per cent.

Here are some reports, mostly based on Department of Commerce findings:

Commodity Prices—There has been a continued upward movement.

Employment—Improvement marked and widespread. During June more than 500,000 persons found work in manufacturing and 16 non-manufacturing industries, irrespective of agriculture, railroads and other fields.

Finance—Until very recently stock prices moved constantly up. The recession that followed is of no particular importance; it is principally the result of profit-taking in a speculators' market.

Construction—In the first half of June contracts represented the highest activity since fall. Most pronounced gain was in nonresidential construction.

Transportation—Railroad carloading is much better than last year at this time, and improvement has been sustained.

Automobiles—It is customary for a seasonal decline to appear in June. This year there was an increase instead. In May passenger cars output was 56 per cent above the monthly average for the year.

Chemical Industries—Customarily experience a seasonal drop in June; this year the drop has not occurred, and prices have risen.

Foodstuffs—Activity greater. Payrolls in all groups, with the exception of flour milling, higher. Wholesale food prices advancing.

Lumber—Continued improvement of the last few months during May and early June. Western pine output recently touched the comparatively high level of 35.7 per cent of capacity.

Steel—There has been continued contraseasonal improvement. In the latter part of June activity reached 50 per cent of capacity, the highest in two years, and has advanced since. A year ago rate was about 16 per cent of capacity.

Textiles—Production increased sharply in May and continued into June, with consequent gains in both employment totals and payrolls. Prices rising.

Paper—Sharing in the general industrial gain. In June, for the first time since February, 1930, shipments of newsprint exceeded those of the corresponding month of the preceding year.

Wool—Rising prices accompany increased output. Prospective wool clip is affected by bad weather in Australia and Western United States.

Silk—Deliveries increasing since first of the year, now close to normal.

Silver—Recently touched 38 1/4 cents highest price since May, 1930.

One of the most important factors in the present trend, is the way seasonal influence are being overridden. A hundred industries are showing improvement at a time when a summer decline almost invariably occurs. Another excellent sign is the continued decline in the number of business failures—a field in which some of the blackest marks of depression have been registered the past few years.

Watch for our full-page advertisement next week. It will be full of news you will not want to miss

RISLEY'S Hardware, Dallas, Pa.

Merle Shaver 121-R-0 DALLAS, PA.

Porch Floors Painted 1 1/2c per sq. foot

High grade porch and deck paint used. Above price is inclusive for paint and labor. Where paint is furnished labor is charged at 50c per hour.

Merle Shaver 121-R-0 DALLAS, PA.

Hutchison Urges Fruit Spraying

Sees Control Of Brown Rot With Use Of Lime-Sulphur

Growers can substantially reduce brown rot infection of fruit by spraying their peaches with self-boiled lime-sulphur about one month before they ripen, declares County Agent J. D. Hutchison. This spray also helps to hold the infection of peach scab in check.

Dusting peaches from 2 to 7 days before picking also has been found to increase their resistance to brown rot, which in many cases is the limiting factor in keeping peaches. It is suggested that peach growers spray as soon as possible such varieties as Carmen, Champion, Rochester, and other varieties that will start to ripen before August 15. Later varieties, such as Elberta, should be sprayed approximately four weeks before the fruit starts to ripen. The use of self-boiled lime-sulphur 8-8-50 is recommended and growers should cover the fruit and leaves with a fine mist spray, since large drops of the solution will spot the peaches.

Tests conducted last year showed that the application of spray doubled the number of peaches remaining free from brown rot after 10 days. The application of a dust before picking also reduced loss from the disease. Dusting is not recommended for all orchards, since on certain varieties which are somewhat resistant and in orchards where only small amounts of brown rot occur the application probably will be unprofitable.

However, where the disease is severe and the grower desires to prevent damage to his stored peaches, it will often pay to apply a 90-19 sulphur dust or a pure sulphur dust to varieties especially susceptible to brown rot, such as Champion, Carmen and Rochester. Mr. Hutchison suggests that the dust be applied to dry foliage when the temperature is below 90 degrees Fahrenheit.

CENTERMORELAND M. E. CHURCH

Services for next Sunday are as follows: Sunday School at Centermoreland at 10:00 a. m., followed by the preaching service at 11:00 with sermon by the pastor. The music will be furnished by the Junior Choir. Preaching service at Lockville at 7:45 p. m.

The pastor would like to meet all the officials of the church in the church on Friday evening.

Complete new lines of merchandise; prices lower than ever, quality higher. Watch for our full-page advertisement next week. It will contain news you cannot afford to miss

RISLEY'S HARDWARE Dallas, Pa.

Gay-Murray Co.

INCORPORATED TUNKHANNOCK, PA.

How About Your Roof?

Coverwell Brand Roll Roofing.	
1 Ply	\$.75
2 Ply	1.00
3 Ply	1.25
3 Ply Red Slate	1.25

Coverwell is a happy combination of quality and low prices.

Maple City Brand Roll Roofing	
2 Ply	\$1.50
3 Ply	1.75
4 Ply	2.00
3 Ply Red or Green	1.85

Maple City Brand is made of the highest quality waterproofing materials—tough, durable and

Bargains in Asphalt Shingles

Hexagon Strip Shingles square	\$4.00
4 in 1 1/2x36 Strip Shingles square	4.50
4 in 1 Regular Strip Shingles square	4.00

Why not consult us on your selection of a new roof for your home or barn.

We can hold these prices only while our present stock lasts, as the roofing market has advanced 35 per cent. It's wise to buy at today's low prices.

Gay-Murray Co. INC. Tunkhannock, Pa.

—Kunkle—

Mrs. C. W. Kunkle who spent past week with her sister Mrs. Warren Fish of Halstead returned home on Sunday evening.

William Isaacs of Youngstown, Ohio visited over the week end with his brother John Isaacs and family and other relatives at Shavertown and Wilkes-Barre. He was accompanied by his sons Charles and Jimmie and grandson Billie Godward. They returned home on Monday.

The Ladies' Aid society will hold their regular meeting and serve dinner at the Grange Hall on Wednesday August 9th. Every body welcome.

Mr. and Mrs. Harry DeWitt and children of Mt. Greenwood were callers at the Olin Kunkle home Monday evening.

John Isaacs and his brother William Isaacs of Youngstown, Ohio, and E. T. Snyder of Luzerne called on William Baird at the Olin Kunkle home on Sunday.

Mr. and Mrs. Stanley Durland, Mrs. Ella Koehler of Wyoming, Fred Makinson and Mrs. Carl Makinson of Forty Fort were callers at the Olin Kunkle home Tuesday evening.

Gertrude Smith and Eleanor Kunkle spent the week end with their aunt Mrs. George Deitrick of Falls.

Mrs. F. P. Kunkle spent a few days with Mrs. S. R. Durland of Wyoming. Mrs. Mary Hutson, Bertha Hutson and William Hutson of Dallas called on Mrs. F. P. Smith Saturday evening.

Mrs. Harold Titus spent Friday with her grandmother Mrs. F. P. Smith. Wilma Brace of East Dallas visited Eleanor Kunkle for a few days.

"PAP" HILBERT IS FETED BY FRIENDS

(Contributed)

The annual home gathering of C. C. Hilbert's family was held Tuesday night, July 25th. "Pap Hilbert," as he is called by his many friends in the community of Beaumont, Wyoming County, observed his eighty-third birthday and we find him in excellent health looking forward to many more such occasions.

Mr. Hilbert was born in 1850 in a log house on a nearby farm, which was owned by his father Andrew Hilbert. He is of German ancestry, his father and grandfather coming to this locality from Germany in 1838. During the Civil War and the depression that followed he has many tales of poverty and suffering.

In 1874, he married Julia A. Bigelow a neighbor girl, now deceased the past eight years. To this home eight children were born, all living except one.

Mr. Wm. Williams of Kingston after a brief address of respect, loyalty and love for Mr. Hilbert, called on the daughters and sons for remarks, and they responded, filled with joy and gratitude that their father was enjoying a great age. Mrs. Alice Moore a sister was present. Music and singing by the Scovell's also tap dancing.

Father Hilbert responded with songs he sang to his little tots fifty-nine years ago also with clog dancing. Ice

(Continued on Page 4.)

Watch for our full-page advertisement next week. It will be full of news you will not want to miss

RISLEY'S Hardware, Dallas, Pa.

Weeds In Pasture May Cause Death Of Cattle

FARM CALENDAR

Timely Reminders From The Pennsylvania State College School Of Agriculture

Trap Chinch Bugs

There is a severe outbreak of chinch bugs in some sections of the state. Extension entomologists of the Pennsylvania State College recommend plowing a deep furrow across the infested field in front of the advancing army and placing in this hydrated lime, gas tar, or waste motor oil.

Improve Potatoes

Roguing is a valuable practice in the growing of disease-free seed potatoes. Leaf roll can be most easily detected and rogued out when the plants are about a foot high. Mosaic shows up to best advantage at mid-season. Giant hill can be recognized and rogued out when the vines mature in the fall.

Sow Cover Crops

The sowing of cover crops in corn and truck crops helps substantially to increase the organic matter content of the soil, conserve plant food, and prevent erosion of the soil. Legumes are preferred, with sweet clover a satisfactory crop where the soil will grow it well.

Prune Dead Flowers

Now is the time to remove all dead flower clusters on lilacs, azaleas, rhododendron, and similar plant materials. Very little other pruning will have to be done. Better blooms will result next year if the dead blossoms are removed now.

Mulch the Garden

Mulches of strawy manure, leaves, lawn clippings and sometimes paper are used in the home garden to conserve moisture and keep down the weeds. Strawy manure is especially valuable for celery, cucumbers, and tomatoes.

Can Good Vegetables

Only fresh, young vegetables in prime condition should be used for canning. To get a good product out of the can it is necessary to put the same kind in the can.

FARM LABOR

The demand for hired labor on Pennsylvania farms as July 1 was three points higher than on the corresponding date a year ago, and seven points higher than on April 1 this year, according to the Federal-State Crop Reporting Service. The supply of farm labor on July 1 was nine points lower than a year ago and sixteen points lower April 1, 1932.

Complete new lines of merchandise; prices lower than ever, quality higher. Watch for our full-page advertisement next week. It will contain news you cannot afford to miss

RISLEY'S HARDWARE Dallas, Pa.

Ladies...

We can resole your shoes and do a perfect job by leaving no repaired appearance... priced modestly... ask about it. Regular Shoe Repairing To Meet Your Purse

JOE'S MODERN QUICK Shoe Repairing Van Campen's Building Shavertown, Penna.

Many farm animals die every summer in Pennsylvania from eating poisonous plants, according to Dr. E. M. Gress, State botanist. This is especially true during the months of July, August and early September when the pasture is likely to become parched and scant, he explained.

Among the plants which cause the most injury are wild black cherry, common black locust, water hemlock, white snake-root and bracken fern.

Wild black cherry is not poisonous if eaten when the leaves are fresh, but often limbs are broken from the trees and in a few hours the leaves become wilted when a deadly poison known as prussic acid is formed. If cattle eat these wilted leaves, serious results usually follow.

Common black locust may not cause much trouble, for ordinarily not a great amount is eaten. More injury has been reported of horses, which have been tied to locust trees eating the bark with fatal results.

Water hemlock is one of the worst poisonous weeds in the State. It is a known fact that many cattle and other stock are lost each year from eating this plant. It comes in bloom about July 1 and continues through the greater part of the summer. It is most poisonous in the young, juicy state. This plant grows in meadows and swamps.

White snake-root does not begin to bloom until about August, however, it will cause trouble if eaten before it blooms. It is a woodland plant.

In northern Pennsylvania, many farmers have trouble every year. In this section of the State the bracken fern is especially abundant. While there is difference of opinion as to the poisonous character of the bracken fern, it has been quite definitely proven by experiment that it is poisonous, the botanist said.

Retreat Farms In Ton Litter Contest

Recently, Theodore J. Sampson, manager of the Central Poor District Farms, had eight litters of Duroc Jersey pigs entered in the Pennsylvania Ton Litter Contest.

When a litter is entered in the Ton Litter Club, the owner attempts to grow a ton of live pork within a 180-day period of the farrowing time.

The litters that were entered consisted of nine and ten pigs each on the average.

Should the Retreat Farm secure eight ton litters, this year, it no doubt would be a Pennsylvania State Record, for the greatest number of ton litters.

Mr. Sampson states the pig department, under the capable management of Lyman Merry, has been unusually successful this past year, having raised an average of over eight pigs per litter.

WATER SERVICE

(Continued from Page 1.)

Kennedy, the latter trading as East and West Nanticoke Bus Company. The White Transit Company alleged that the respondent transported passengers from Johnson's Green and West Nanticoke to Hunlock Creek without having first obtained a certificate of public convenience.

CHARIS

Represented By Mrs. F. P. Kunkle R. F. D. No. 1, Dallas, Pa., Phone 121-R-12 Write or phone for an appointment.