

SPORT SLANTS

By "Red"

Herm Van Campen, Shavertown sportsman, and Scott Van Horn, a reserve on Wilkes-Barre Y. M. C. A. volleyball team and a resident of Shavertown, have officially opened the fishing alibi season.

They went up to Pike County last week end, well armed with all kinds of fishing tackle, and leaving behind many promises to friends that they would supply them with enough fish to make a Sunday dinner. They returned with four puny specimens, scarce five inches long. Mae Van Campen and Mrs. Van Horn had a hard time making them cover the bottom of the frying pan. Scotty said it was too windy to fish. Oh, Yes, Herm took his new rod and reel and his market basket which he recently purchased.

Ed. Maury, one of the communities veterans in the promotion of base ball, was commenting with great fluency on the baseball situation which confronts us in these parts.

"The only way out that I can see it" said Ed, "is for these teams to go back to the system we used many years ago. I had a club composed of young fellows 18 years and over. We used to go out and play mostly for the fun of it. And we held our own with the best teams in the Valley.

The teams around here cannot pay out money to players, because they can't hope to draw enough at the gates to operate any kind of a payroll. They are lucky at times if they can meet expenses for a game. There is not a single ball club around here that I would give a nickel for if they are going to be pay players.

Don'ts For Trout Anglers

Don't fish for trout where the stream or pond is posted unless you first ask permission. Nine times out of ten, if you ask permission, they will let you fish. If they do, don't leave gates open or bars down. Don't park cars to block roadways or walk through meadows and plowed fields. Don't break down a fence.

Put yourself in the place of the farmer who has a nice crop of hay or grain growing and people walking through it every day. Then have aeh?j

about fifty head of cattle and have some one leave the bars down or gate open allowing the animals to get in the meadow or patch of cabbage. Use good judgement and common sense and avoid the destruction of property. At any place you stop you'll usually find plenty of veteran anglers who will gladly take you out to a stream or tell you where you can get good results.

"Stonewall" Jackson first baseman for the Beaumont team of the Rural league and Center man on the basket ball team has accepted a position as an elevator operator in Washington, D. C.

Beaumont fans, 250 strong, which included a large number of high school students, last week completed the task of improving the ball field adjoining the high school. Stones from the size of a pea were carted away, making the field one of the best in the Rural League. It is planned to construct a one-quarter mile cinder path on the ground.

Fernbrook and Dallas teams of the Rural League are planning to use the East Dallas Diamond for their home games on alternating weeks.

The school house grounds at Shavertown will have to be into shape before any playing can be done. The back stop has been completely destroyed.

Serial Bonds Are Lesser Burden On School Districts

Officials Say Method Is Better, Safer Than Sinking Fund

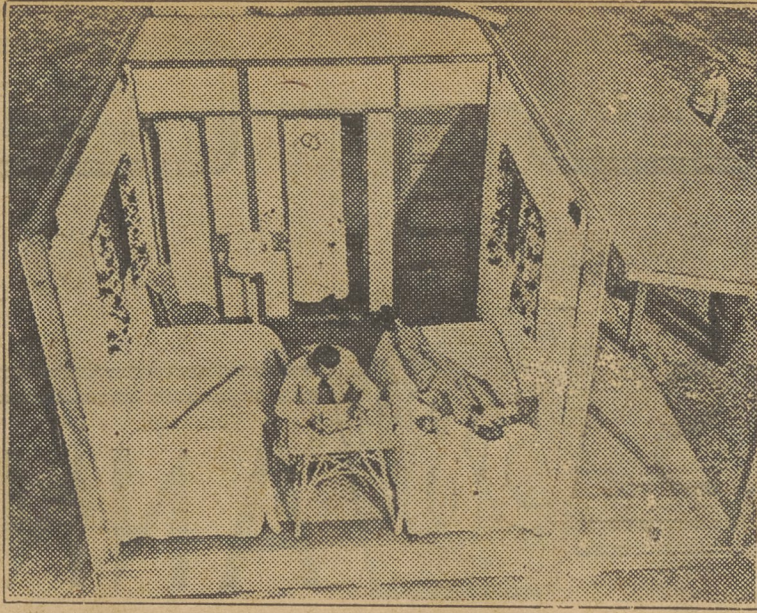
Through the closing of some financial institutions many school districts of Pennsylvania may lose part of the money accumulated in their sinking funds, and officials of the State Department of Public Instruction say that such losses would not be so great had more districts used the serial bond method of financing.

In the sinking fund method, school districts accumulate funds to pay the bonds when due, usually at the end of a ten or twenty-year period. It is pointed out that many slips may occur before the bonds mature, and in the present instance, bank failures are providing embarrassing to some school districts where directors see their savings lost or seriously endangered.

Much of this loss could have been avoided by directors using the serial bond method of financing, State school officials declare. Such dangers and some unnecessary expense may be avoided, they say, by using the serial type of bonds, some of which mature each year beginning at the end of the first year. When such bonds are issued the interest and that part of the principal maturing each year may be paid from general funds of the district.

Distribute Burden

In order that the burden may be equally distributed over the period during which the issue is in force, the bond schedule set up should provide for equalized payments. Under this plan the yearly increase throughout the period of the issue and the payments for interest gradually decrease but the sum of these two items is practically uniform from year to year.



WHERE THE ATHLETES WILL BE HOUSED DURING THE OLYMPICS

Los Angeles, California—This is the interior of one of the Olympic Cottages now being built on the site of The Olympic Village at Los Angeles, on the sea-cooled mesa, where competing athletes will live during the games. The cottages, each of which will house four athletes, were factory built and delivered to the site in numbered parts. The Olympic Village, landscaped and boulevarded, complete with every comfort and recreation facility for the visiting athletes will be ready for occupancy more than a month before the opening of the games.

This plan makes it possible for the proceeds of a fixed number of mills on the assessed valuation to provide for this item of expense without the establishment of a sinking fund. The fact that the obligations mature each year means that they must be provided for from each year's income and may not be postponed to bankrupt the district at some later date.

In the less desirable sinking fund method money is set aside to pay the interest and principle of bonds. Directors may fail to meet this obligation and a heavy burden may face the district at a later date due to the neglect. Sometimes it has happened that money has been "borrowed" unlawfully from the sinking fund and used for other purposes. Even though the fund is properly established and accumulated it may be lost, as has happened recently in many districts. In addition to the dangers involved, school finance leaders say that the issuance of the type of bonds requiring a sinking fund is an expensive type of finance, as the rate of interest received on the money in the sinking fund is almost always lower than the rate of interest paid by the district on the bonds.

Fingerprint Aid Tracing Suspects

According to William F. Hoffman, chief of the Bureau of Identification, Pennsylvania State Police, 561 persons out of 2089 finger printed during March, 1932, were identified as having previous criminal records. Many of these criminals, held under assumed names, would not be known if arrested in a city other than their homes, were it not for fingerprint records.

Investigate All Suspicious Fires

Officials of the Bureau of Fire Protection, Pennsylvania State Police, announced today that a vigorous campaign is under way by trained investigators of the department, to ferret out those who are responsible for incendiary fires. During the present year 45 persons have been arrested for arson, and there are now under investigation scores of other cases in which evidence indicates many additional arrests will follow.

Insurance company and fire department officials are co-operating with the bureau in promptly notifying it of any unusual or suspicious fire circumstances.

Buy Your Printing Now and Save Time

Grafting Wax
60c Per Pound Postpaid
GEO. H. STROUD
Sweet Valley, Pa.

LES WARHOLA TO PLAY HERE SATURDAY NIGHT

Les Warhola and his orchestra will play for the weekly farmer dance at the Palace of Amusement, Shavertown every Saturday night. The orchestra is composed of four pieces and has William Cobleigh as caller. The orchestra played for the first time at the Shavertown amusement centre last Saturday night and patrons praised highly the merits of the organization. The orchestra also plays at the Noxen Community hall every Wednesday evening. For a real treat in music attend one of these weekly affairs.



YOU Should Keep My Record
The Post has Record Blanks For Sale

Gay-Murray Co. Inc. Tunkhannock

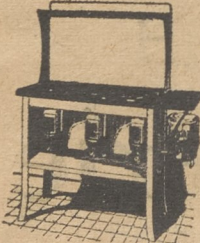
Cook in a COOL KITCHEN

Hot weather is just around the corner, it will pay you to see our complete display of cooking appliances.

- Plate Oil Stoves \$5.00 up.
- Kitchen Cook Gas Stoves \$8.50
- Maple City Oil Stoves \$15.00
- Propane Ranges \$80.00
- Heat Control Elec. Plates \$4.50

A buzz on the phone brings a demonstration.

John Danmon of Alderson came over for one of our finest white sinks to make life both easier and more pleasant for the cash. Take a look at our sinks and see just how little money it takes to make the cook happy.



OIL STOVES \$5.00 Up.

Only a month ago, we had two feet of snow and both Ira Frantz and Mr. Parrish of Dallas, were in for stable blankets. Guess they won't need "em" any more now, but Christmas is coming.

Come in sometime and look over our electric refrigerators. We have six different models at prices of \$115.00 up.

WE SELL FOR LESS

NEXT TIME YOU NEED

- Circulars
- Invitations
- Letterheads
- Folders • Cards
- Statements
- Envelopes
- Billheads

GET OUR PRICES

SHERIFF SALES

SHERIFF'S SALE
FRIDAY, APRIL 29, 1932,
AT 10 A. M.

By virtue of a writ of Fi Fa No. 7, May Term, 1932, issued out of the Court of Common Pleas of Luzerne County, to me directed, there will be exposed to public sale by vendue to the highest and best bidders, for cash, at the Sheriff's Sales Room, Court House, in the City of Wilkes-Barre, Luzerne County, Pennsylvania, on Friday, the 29th day of April, 1932, at ten o'clock in the forenoon of the said day, all the right, title and interest of the defendants in and to the following described lot, piece or parcel of land, viz:

All that lot and piece of land in Borough of Swoyersville, beginning at a corner of lot 16, block E. of Tripp Partition plot, thence along westerly side of Milbre Street north 50 degrees east forty feet to a corner of lot 13, thence extending back same width (40 feet) between lots 16 and 18 north 31 degrees west one hundred forty feet and being same land conveyed to John and Mary Bednar by Michael Sinlay and wife, by deed dated 20th November and recorded in deed book 536 page 43, improved with a two story, wood, single dwellinghouse.

Seized and taken into execution at the suit of Luzerne National Bank of Luzerne, Penna., vs. John Bednar and Mary Bednar, his wife, and will be sold by

LUTHER M. KNIFFEN, Sheriff,
G. J. Clark, Atty.

SHERIFF'S SALE
FRIDAY, APRIL 29, 1932,
AT 10 A. M.

By virtue of a writ of Levari Facias-sur Mortgage No. 13, May Term, 1932, issued out of the Court of Common Pleas of Luzerne County, to me directed there will be exposed to public sale by vendue to the highest and best bidders, for cash, at the Sheriff's Sales Room, Court House, in the City of Wilkes-Barre, Luzerne County, Pennsylvania, on Friday, the 29th day of April, 1932, at ten o'clock in the forenoon of the said day, all the right, title and interest of the defendants in and to the following described lot, piece or parcel of land, viz:

All that certain lot of land situated in White Haven Borough, Luzerne County, Pennsylvania, being the eastern part of lots Nos. 33 and 35 on the west side of Main street, formerly Railroad Street, containing in front or breadth on Main Street 66 feet and extending thence at that width between parallel lines at right angles to Main Street, 100 feet.

Being the same premises conveyed to Harry H. Davenport by Charles W. Mordue, Administrator, by deed recorded in Luzerne County D. B. 651; page 43, etc.

Improved with a two and three story, frame, tin roofed building used for mercantile and dwelling purposes.

Taken in execution at the suit of Lulu S. Miller, now assigned to John Ondush and Bronislaw Sobolak, vs. Cordie S. Davenport, devisee, and Cordie S. Davenport and Arthur Davenport, executors of the estate of Harry H. Davenport, deceased, and will be sold by

LUTHER M. KNIFFEN, Sheriff,
George L. Fenner, Atty.

SHERIFF'S SALE
FRIDAY, MAY 6, 1932,
AT 10 A. M.

By virtue of a writ of Fi Fa No. 111, May Term, 1932, issued out of the Court of Common Pleas of Luzerne County, to me directed, there will be exposed to public sale by vendue to the highest and best bidders, for cash, at the Sheriff's Sales Room, Court House, in the City of Wilkes-Barre, Luzerne County, Pennsylvania, on Friday, the 6th day of May, 1932, at ten o'clock in the forenoon of the said day, all the right, title and interest of the defendant in and to the following described lot, piece or parcel of land, viz:

All that certain lot of land situated in Plains Township, Luzerne County, Pennsylvania, described as follows: BEGINNING at a corner on the North side of East Carey Street; thence North 32 degrees 15 minutes E., 200 feet to a corner on an alley; thence along said alley S., 57 degrees 15 minutes E., 50 feet to a corner; thence S. 32 degrees 15 minutes W., 200 feet to a corner on said East Carey Street; thence along said Street North 57 degrees 45 minutes W., 50 feet to the place of beginning. Being lot No. 217 on the Merrett Estate plot in said Plains Township.

IMPROVED with a frame dwelling house, out-buildings and fruit trees thereon.

TAKEN in execution at the suit of Chapin Lumber Company vs., John Kownack.

Sheriff, LUTHER M. KNIFFEN,
George L. Fenner, Atty.

DON'T GAMBLE WITH NEXT YEARS PROFITS

USE



The Feed That Makes Chicks Grow
Known Among Poultrymen As

THE QUICK DEVELOPER

And That's What It Is

Saves Chicks

Makes Early Broilers

Develops Pullets For Layers

Its Iodine content promotes more normal development, and resists coccidiosis and other intestinal parasites.

See Your Tioga-Empire Dealer

DEVENS MILLING CO.

DALLAS, PA.

KUNKLE, PA.

Feeds Manufactured by
TIOGA-EMPIRE FEED MILLS, Inc.
WAVERLY, N. Y.

TI-O-GA FEED SERVICE

HERE

MEYER BOTH
April General Newspaper
Service

FREE
at
THE Dallas Post

NOW

NEXT TIME YOU NEED

Circulars
Invitations
Letterheads
Folders • Cards
Statements
Envelopes
Billheads

GET OUR PRICES