

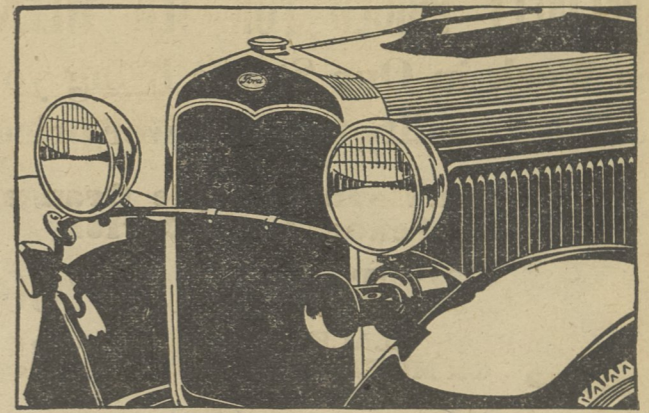
FRUIT TREE GRAFTING DEMONSTRATION TO BE HELD
 Fruit growers of northern Luzerne county will be given an opportunity to learn how to graft fruit trees at a demonstration which will be given at the W. A. Smith orchard in Jackson

township on Wednesday, April 15th, at 1:30 P. M.
 Mr. John Reuf, fruit specialist of the Pennsylvania State College, will be in charge of the meeting.
 Top working and bridge grafting methods will be shown at this meeting.
 The Smith farm can be reached by driving the road through the J. N. Conyngham Farm, at Lehman, from which point the road will be posted.

Mr. Gordon, at these schools, demonstrates methods used in entertaining mixed groups of people with games. The work proves invaluable to organizations such as churches, granges and lodges in developing social activities.
 Any organization in Luzerne county may send two or more representatives to this meeting; there are no charges to this school, since this work is one of the projects carried on by the Luzerne County Agricultural Extension Association, co-operating with the Pennsylvania State College.

and weight over that shown by 10,000 other children, who were not given milk, the milk-fed children showed definite changes in their personality and their lessons benefited.
 "The study was made by Drs. Gerald Leighton and Peter McKinlay, of the department of health, during six months of 1930. The milk used was obtained from selected dairies. One half was given raw to one group and the remainder was pasteurized for the other group. There was no appreciable difference between the effects of the raw and the pasteurized milk.
 "The children used for the study were between the ages of 5 and 12 years. Each was given three-fourths pint during the forenoon each day. Five doctors and seventeen nurses were required to measure all the children before the milk-drinking campaign started. All 20,000 children were again measured after the period of milk feeding.
 "All the milk-fed children grew more rapidly than the ones who were not fed; the older ones showed as much increase in growth as the younger ones. After the child had been receiving milk for several months, the mother reported that it was the first time for years that he had not had a spring illness. Teachers reported that mental lassitude gave way to alertness and morose children became talkative."

ANOTHER EXAMPLE OF FORD VALUE



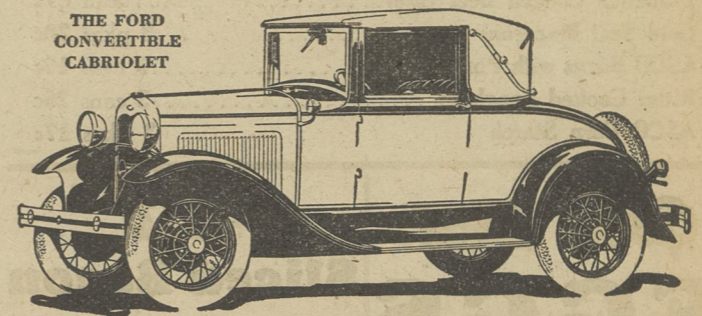
Bright, enduring RUSTLESS STEEL is used for many exposed bright metal parts of the Ford

WHEN YOU BUY a Ford you buy enduring beauty. The body finish is made to last for the life of the car and practically all exposed bright metal parts except the bumpers are made of enduring Rustless Steel.

This Rustless Steel has great tensile strength. It is the same bright metal all the way through. A salt test equivalent to forty years' service under the severest weather conditions failed to have any effect on its brilliance. It never requires polishing. All you do is wipe it with a damp cloth, as you do your windshield.

This is just one of many features that show the substantial worth of the Ford. In speed, comfort, safety, economy and long life—in the richness of its finish and upholstery—it brings you everything you want or need in a motor car at an unusually low price.

Call or phone for demonstration.

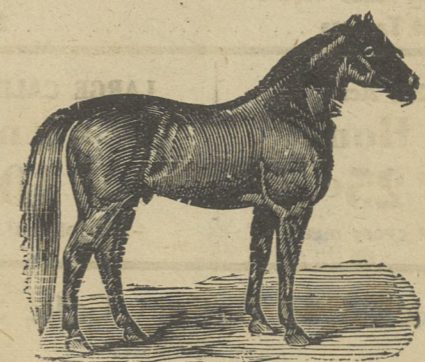


LOW FORD PRICES \$430 to \$630

(F. o. b. Detroit, plus freight and delivery. Bumpers and spare tire extra at low cost. You can purchase a Ford on economical terms through the Authorized Ford Finance Plans of the Universal Credit Company.)



HORSE AUCTION



A Carload of Fine Well Broken ready to use Horses

TUNKHANNOCK APRIL 16, 1931

SALE STARTS PROMPTLY AT 1:00 P. M. ALL HORSES DIRECT FROM WESTERN FARMS, ELIMINATING MARKET DISEASES, AND MARKET EXPENSES AND PROFITS. SEE THESE HORSES, YOU CAN BUY THEM CHEAP FOR CASH.

MOFFIT LIVESTOCK CO.

B. O. Moffit, Auctioneer

Rural Group To Hold Second Game Leadership School

The second meeting of a series of three game leadership schools, conducted by W. R. Gordon, of State College, will be held in the Muhlenburg Grange Hall on Wednesday evening, April 15th, at 8:00 o'clock.

Effects of Milk Feeding Observed In Scotland

"The growth of older children is as much aided by milk as the growth of younger children, a recent study made in Scotland brings to light," according to Hygeia.
 "The thousand children given milk in sixty-seven schools were studied by the department of health of Scotland. Beside showing an increase in height

R. H. GARINGER
 H. L. 3122

Z. E. GARINGER
 Dallas 358-R-3

Garinger Bros.

(Successors to John Isaacs)

INTERNATIONAL TRACTORS

McComick-Deering

FARM MACHINERY

Sales and Service

QUICK AND IMMEDIATE SERVICE AND REPAIRS ON ALL FARM MACHINERY

HARVEY'S LAKE SCHEDULE

Effective September 16, 1930

SOUTH BOUND

Cars Leave Dallas for Wilkes-Barre and all Intermediate Station

A. M.					
4.05	5.20	*5.40	*6.00	6.20	*6.40
7.20	7.40	*8.00	8.20	8.40	9.00
9.40	10.20	11.00	11.40		

P. M.					
12.20	1.00	1.40	2.20	3.00	3.40
*4.00	4.20	4.40	5.00	5.20	*5.40
6.00	6.20	*6.40	7.00	7.20	7.40
8.20	9.20	10.20	11.20	12.20	1.00

Cars Leave Harvey's Lake for Wilkes-Barre and all Intermediate Stations

A. M.				
*6.00	7.00	8.00	9.20	12.00

P. M.				
2.00	4.00	5.00	6.00	7.00
12.00				10.00

*Except Sunday and Holidays.

ABOVE CARS LEAVE

Idetown,	10 Min. after Leaving H. Lake
Hays,	15 Min. after Leaving H. Lake
Dallas,	20 Min. after Leaving H. Lake
Fernbrook Park,	22 Min. after Leaving H. Lake
Shavertown,	25 Min. after Leaving H. Lake
Mt. Greenwood,	27 Min. after Leaving H. Lake
Trucksville,	30 Min. after Leaving H. Lake
Hillside,	32 Min. after Leaving H. Lake
Luzerne Junction,	39 Min. after Leaving H. Lake

NORTH BOUND

Cars leave Wilkes-Barre for Dallas and all Intermediate Stations

A. M.					
4.50	*5.00	*5.20	5.40	6.00	6.20
*6.40	7.00	7.20	7.40	8.00	8.20
9.00	9.40	10.20	11.00	11.40	

P. M.					
12.20	1.00	1.40	2.20	3.00	3.20
3.40	4.00	4.20	4.40	5.00	5.20
5.20	5.40	6.00	6.20	7.00	7.40
8.20	9.00	10.05	11.40	12.30	1.40

Cars leave Wilkes-Barre for Harvey's Lake and all Intermediate Stations

A. M.				
5.00	6.00	7.00	8.00	11.00

P. M.				
1.00	3.00	4.00	5.00	6.00
11.10				9.00

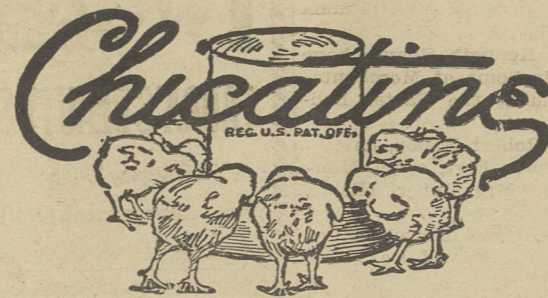
*Except Sundays and Holidays.

ABOVE CARS LEAVE

Luzerne Junction,	15 Min. after Leaving Wilkes-Barre
Hillside,	23 Min. after Leaving Wilkes-Barre
Trucksville,	25 Min. after Leaving Wilkes-Barre
Mt. Greenwood,	27 Min. after Leaving Wilkes-Barre
Shavertown,	29 Min. after Leaving Wilkes-Barre
Fernbrook Park,	32 Min. after Leaving Wilkes-Barre
Dallas,	35 Min. after Leaving Wilkes-Barre
Hays,	39 Min. after Leaving Wilkes-Barre
Idetown,	44 Min. after Leaving Wilkes-Barre

Additional Service between Fernbrook Park and Dallas as Traffic Demands.

The Wilkes-Barre Railway Corporation



BIGGER EGG PRODUCERS AND HEAVIER BROILERS

Fed to chicks from the time they are hatched until they are five months old, Chicatine will give you the best possible development of pullets and fit them to be large egg producers.

Hens must have strong constitutions to be big producers and Chicatine will produce the constitutions they need.

Chicatine will develop broilers more quickly and heavier without the losses which occur when they are forced too much without receiving in the feed all the elements to maintain their health and vigor.

You will make more money from your broilers when Chicatine is fed.



TI-O-GA FEED SERVICE

DEVENS MILLING COMPANY

DALLAS, PENNA. KUNKLE, PENNA.



Coal Burning BROODER

Before you buy a brooder of any kind, come in and let us show you this New Jamesway Coal Burning Brooder.

The Jamesway is the only brooder built that has a SPECIAL AIR PURIFIER and an AIR MOISTENER. This means that your chicks are protected against the foul, dead air that accumulates under the hover of ordinary brooders, which parches their tender membranes, saps their vitality, stunts and retards their growth and causes heavy death losses.

In the Jamesway the foul, dead air is taken off the floor, drawn up the flue, and thus with the air moistener maintains a pure, fresh, moistened air condition under the hover all the time. That's why the Jamesway RAISES MORE CHICKS—why they are sturdier, stronger and grow faster.

Jamesway Brooders are simple, easy and economical to operate. You can burn either hard or soft coal. The large stove holds sufficient fuel for many hours without refilling—the large convenient sliding door makes it easy to fill. It will pay you to come in and see this brooder before you buy.

J. R. OLIVER HARDWARE
 DALLAS, PENNA.