

**Noxen**

(Continued From Page 3)

She was formerly a member of St. Luke's Lutheran church, Noxen, where Rev. Yiengst was a former pastor. Mr. Lilley is the son of Joseph Lilley. He is employed in the leather business in Johnson City.

The popular young couple have many friends in Noxen and Johnson

City. A wedding dinner was given at the home of the bride's parents at Noxen. After April 1st they will reside at Johnson City.

The best wishes from their many friends are extended to the newlyweds for a happy married life.

Instruction in all band instruments by experienced musician and former member of Victor Concert Band. For interview call Dallas 277-R-8.

**Begin Tapping Maple Trees As Sap Flow Starts**

**Harvesting Annual Crop Is Underway As Spring Nears—1931 Will Be Average Year Or Better**

With the maple sugar season in full swing, reports of district foresters to the Pennsylvania Department of Forests and Waters, particularly from the northern part of the State, indicate that 1931 will be an average year or better, although the output of maple products is not expected to reach the peak production of 1930, which was the best in a decade.

More than half a million maple trees are ordinarily tapped in Pennsylvania, but even with a similar number of trees tapped in different years the product may vary greatly. Although the number of trees tapped was the same in 1929 and 1930, more than twice as much sugar and almost three times as much syrup was made in the latter year, it was pointed out.

The variable yield in maple sap and products depends upon weather conditions, the foresters stated. The season may last anywhere from two to eight weeks, during February and March. High altitudes have the effect of generally delaying the advent of spring and prolonging the flow of the sap. In general, day temperatures rising above thirty degrees Fahrenheit, frosty nights and a slow change from winter to spring, are best. A region where the ground thaws quickly and the temperature varies little from day to night, is not suitable.

Production of maple sugar and syrup, distinctly American products, is confined chiefly to the "North Woods," or beech-birch-maple forests from Pennsylvania northward through the New England States and Canada, and west to the Lake States. In Pennsylvania, the industry centers in the north tier counties, where this type of forest predominates.

**Somerset Is Leader**  
Although the north tier counties, as a group, lead in maple syrup and sugar production, the southern border county of Somerset often tops the list. The unique position of Somerset county is attributed to its generally high altitude, with a correspondingly typical northern climate and abundance of sugar maple trees, and second because the "Somerset County Dutch," having a special fondness for maple sugar and syrup, conserved the sugar bush when converting the virgin forest into farmland. Heavy demands of the acid wood industry upon the beech-birch-maple forests in the northern part of the State have depleted the stand of maple in that section.

The yield of individual maple trees depends upon their size, location and quality. Trees under eight and ten inches are not usually tapped. From five to forty gallons of sap are obtained from a tree during the season. One tree can be counted on to produce one pint to one gallon of syrup or one to 7 pounds of sugar. A thirty-two gallon barrel of sap is needed to make one gallon of syrup or eight pounds of sugar.



PROF. A. G. PHILIPS



**The Weekly Farm Calendar**

Timely Reminders From the Pennsylvania State College School of Agriculture

**Gardening Is Popular**—Small gardens are going to play a large part this year in supplying the family larder with food and in decreasing inroads on the income. Backyard gardens promise to be especially popular this year in piecing out the diet of the unemployed.

**Feed Needy Bees**—Colonies which are short of supplies need food now for brood rearing. Sugar syrup, made by dissolving one and one-half parts of white granulated sugar in one part of hot water, is the most desirable food for spring feeding. The syrup is fed when cool.

**Chicks Eat Early**—Feeding chicks 24 hours after hatching is no longer considered a harmful practice.

**Prevent Horse Sickness**—Heavy feeding and no exercise on Sunday or rainy days are bad for horses. Be sure to reduce the feed when the work stock is idle.

**Improve Old Lawns**—Old lawns should be gone over carefully at this time. Unsightly depressions which cannot be removed by rolling can be eliminated by lifting the sod, filling with good soil, and replacing the sod. Where this is not practical, fine loam can be spread to a depth of three inches over the existing lawn and the surface then seeded.

**Fertilize Fruit Trees**—Weakened fruit buds will be aided by application of a fertilizer high in quickly available nitrogen, say Penn State fruit specialists.

**Save Vegetable Plants**—Damping off of vegetable seedlings can be controlled by treating seed or soil with chemical solutions. Ask your county agent about this.

**11 Years Constipation, Glycerine Mix Ends It**

"For 11 years I tried to get rid of constipation," says Chas. E. Blair. "Then at last the simple mixture, Adierika, made me regular."  
The simple mixture of glycerine, buckthorn bark, saline, etc. (Adierika) acts on BOTH upper and lower bowel, relieving constipation in 2 hours! Brings out poisons you never thought were in your system. Let Adierika give your stomach and bowels a real cleaning and see how good you feel! Gustav A. Kuehn, Druggist; Luzerne by R. M. Stapleton, Druggist.

**FOR SALE**  
Six-room house with sun parlor and all modern improvements, lot 50x170 feet, located in center of Wyoming, Pa., will be sold at reasonable price. Apply to  
**ROBERT SHULDE**  
WYOMING, PA.  
Phone Wyo. 488.

**The BEST Gray Hair Remedy is Home Made**  
To half pint of water add one ounce bayrum, a small box of Barbo Compound and one-fourth ounce of glycerine. Any druggist can put this up or you can mix it at home at very little cost. Apply to the hair twice a week until the desired shade is obtained. It will gradually darken streaked, faded or gray hair and make it soft and glossy. Barbo will not color the scalp, is not sticky or greasy and does not rub off.

**First National Bank**  
DALLAS, PA.  
Members American Bankers' Association  
DIRECTORS  
R. L. Brickel, C. A. Frantz, D. P. Honeywell, W. B. Jeter, Sterling Machell, W. R. Neely, Clifford W. Space, A. C. Devens, George R. Wright.  
OFFICERS  
George R. Wright, President  
D. P. Honeywell, 1st Vice-Pres.  
C. A. Frantz, 2nd Vice-Pres.  
W. B. Jeter, Cashier  
Three Per Cent Interest On Savings Deposits  
No account too small to assure careful attention  
Deposits Payable on Demand  
Vault Boxes for Rent  
Self-Registering Savings Bank Free

**SILK SALE**

10,000 dress-length remnants of finest silk to be cleared by mail, regardless. Every desired yardage and color. All 39 inches wide. Let us send you a piece of genuine \$6 Crepe Paris (very heavy flat crepe) on approval for your inspection. If you then wish to keep it mail us your check at only \$1.90 a yard. (Original price \$6 a yd.). Or choose printed Crepe Paris. Every wanted combination of colors. We will gladly send you a piece to look at. What colors and yardage, please? If you keep it you can mail us check at \$1.25 a yd. (Final reduction. Originally \$6 a yd.)

All \$2 silks, \$2 satins and \$2 printed crepes are 90c a yd. in this sale. Every color. Do not ask for or buy from samples. See the whole piece you are getting before deciding. We want to be your New York reference so tell us all you wish to about yourself and describe the piece you want to see on approval. Write NOW. Send no money. To advertise our silk thread we send you a spool to match free.  
**CRANE'S Silks, 545 Fifth Ave., N. Y. City.**

**Legal Notices**

**ESTATE OF JOHN R. WATKINS, LATE OF NANTICOKE, PA., DECEASED.**  
Notice is hereby given that Letters Testamentary have been granted on the above estate. All persons indebted to said estate are requested to make payment and those having claims or demands to present the same without delay to:  
**REYNOLD G. WATKINS, Guardian,**  
473 Market Street, Kingston, Pa.  
2-27-31-6t.

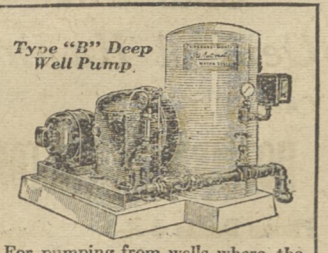
**Legal Notices**

**SEALED PROPOSALS LUZERNE COUNTY**  
Sealed Proposals will be received by the Controller of Luzerne County at his office in the Court House, Wilkes-Barre, Pa., (and no other place), until 10:30 A. M. Tuesday, April 14th, 1931, when they will be publicly opened and read by the County Commissioners for furnishing Luzerne County for use in the Treasurer's office, one safe, and one burglar proof chest, in accordance with specifications and instructions to bidders on file in the office of the County Treasurer.  
Proposals must be accompanied by a certified check, bank cashier's check, or trust company's check, made payable to the Treasurer of Luzerne County in the amount of Fifty (\$50.00) Dollars.  
Envelopes to be marked "PROPOSALS FOR SAFE AND CHEST."  
The Commissioners of Luzerne County reserve the right to reject any or all bids, or any parts or items of bids.  
**LEONARD D. MORGAN, County Controller.**  
3-27-31-3t

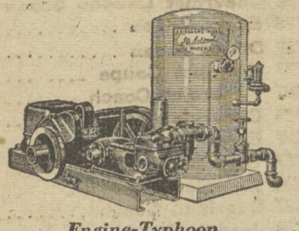
**You need running water!**

NOW you can enjoy it whether you have electricity or not

SO many people think that without electricity it is impossible to have running water. Don't let that idea prevent you from knowing the joys and comforts that this modern necessity brings.  
Even if your home isn't wired you can enjoy running water in the house and anywhere on the premises. One of the many new Fairbanks-Morse



For pumping from wells where the water is more than 22 feet below the surface. Shown with F-M motor drive. Also supplied with F-M 'Z' Engine where electric current is not available.



The "Z" Engine Driven Typhoon is a shallow well duplex pump—sizes 600 to 5000 gallons per hour. Also available with F-M Electric Motor.

engine driven water systems will bring it—all the water you want—at a cost you can well afford. Fairbanks-Morse builds a complete line of water systems. Engine and motor driven. Capacities from 210 gallons per hour up. There is one that will just suit your needs.

Every F-M Water System is built complete and guaranteed by Fairbanks-Morse—the world-known organization making gigantic water systems for cities and industrial use. This name is your protection. Prices are low. Sold on easy terms. See these remarkable values!

PLUMBING SHEET METAL WORK HEATING

**R. L. HALLOCK**

162 LAKE STREET, DALLAS, PENNA.

Pumps, Leathers, Checks and Repairs Carried in Stock

**FAIRBANKS-MORSE Home Water Systems**

**HARVEY'S LAKE SCHEDULE**

Effective September 16, 1930

**SOUTH BOUND**

Cars Leave Dallas for Wilkes-Barre and all Intermediate Station

A. M.					
4.05	5.20	*5.40	*6.00	6.20	*6.40
7.20	7.40	*8.00	8.20	8.40	9.00
9.40	9.20	11.00	11.40		

P. M.					
12.20	1.00	1.40	2.20	3.00	3.40
*4.00	1.20	4.40	5.00	5.20	*5.40
6.00	6.20	*6.40	7.00	7.20	7.40
8.20	9.20	10.20	11.20	12.20	1.00

Cars Leave Harvey's Lake for Wilkes-Barre and all Intermediate Stations

A. M.					
*6.00	7.00	8.00	9.20	12.00	
P. M.					
2.00	4.00	5.00	6.00	7.00	10.00
12.00					

\*Except Sunday and Holidays.

**ABOVE CARS LEAVE**

Idetown,	10 Min. after Leaving H. Lake
Hays,	15 Min. after Leaving H. Lake
Dallas,	20 Min. after Leaving H. Lake
Fernbrook Park,	22 Min. after Leaving H. Lake
Shavertown,	25 Min. after Leaving H. Lake
Mt. Greenwood,	27 Min. after Leaving H. Lake
Trucksville,	30 Min. after Leaving H. Lake
Hillside,	32 Min. after Leaving H. Lake
Luzerne Junction,	39 Min. after Leaving H. Lake

**NORTH BOUND**

Cars leave Wilkes-Barre for Dallas and all Intermediate Stations

A. M.					
4.50	*5.00	*5.20	5.40	6.00	6.20
*6.40	7.00	17.20	7.40	8.00	8.20
9.00	9.40	10.20	11.00	11.40	

P. M.					
12.20	1.00	1.40	2.20	3.00	3.20
3.40	4.00	4.20	4.40	5.00	5.20
5.20	5.40	6.00	6.20	7.00	7.40
8.20	9.00	10.05	11.40	12.30	1.40

Cars leave Wilkes-Barre for Harvey's Lake and all Intermediate Stations

A. M.					
5.00	6.00	7.00	8.00	11.00	
P. M.					
1.00	3.00	4.00	5.00	6.00	9.00
11.10					

\*Except Sundays and Holidays.

**ABOVE CARS LEAVE**

Luzerne Junction,	15 Min. after Leaving Wilkes-Barre
Hillside,	23 Min. after Leaving Wilkes-Barre
Trucksville,	25 Min. after Leaving Wilkes-Barre
Mt. Greenwood,	27 Min. after Leaving Wilkes-Barre
Shavertown,	29 Min. after Leaving Wilkes-Barre
Fernbrook Park,	32 Min. after Leaving Wilkes-Barre
Dallas,	35 Min. after Leaving Wilkes-Barre
Hays,	39 Min. after Leaving Wilkes-Barre
Idetown,	44 Min. after Leaving Wilkes-Barre

Additional Service between Fernbrook Park and Dallas as Traffic Demands.

The Wilkes-Barre Railway Corporation

**Gay-Murray CO**

Incorporated Tunkhannock

A well pruned tree bears one-half more fruit. Ask for

TIFFANY PRUNERS



Cuts 1 1/2-Inch Limbs Easily

**Spray Materials**

4 Lbs. Arsenate of Lead	65c
24 Lbs. Arsenate of Lead	\$3.75
16 Lbs. Arsenate of Lead	14.00
5 Lbs. Dry Lime Sulphur	1.00
10 Lbs. Dry Lime Sulphur	1.75
25 Lbs. Dry Lime Sulphur	3.50

Nicotine, Pebble Lime and Liquid Lime Sulphur in stock at lowest prices.

E. Y. B. Engleman, of Noxen, is among our recent purchasers of TIFFANY PRUNERS

We Sell For Less

**Chicatine**  
REG. U.S. PAT. OFF.

**THE RIGHT FOOD FOR CHICKS**

Chicatine has proved itself as the right food for chicks. Practical poultry keepers who have used Chicatine and made comparative tests with well known chick feeds, will now have no other.

Fed to chicks at the start and continued for five months, it brings them to maturity quicker. You get big, strong, healthy pullets that prove better layers; big, heavy broilers ready for market sooner and with greater profit.

Chicatine is clean, pure food without stimulant or medication. Because it has all the food elements in correct proportion, it develops chicks quickly and lessens mortality.

Chicatine increases profit for the poultry keeper.

Try it on your chicks.

**TI-O-GA FEED SERVICE**  
**DEVENS MILLING COMPANY**  
DALLAS, PENNA. KUNKLE, PENNA.