

**"HUMIDITY GUIDE"
FOR HOME ISSUED**

Breathe in Gallons of Vapor
Daily, New Bulletin
Advises.

From one to more than 16 gallons of water a day should be vaporized and circulated in the home to make the atmosphere humid enough for health and comfort, according to "Humidity in the Home—a Practical Guide," just published by the Holland Institute of Thermology of Holland, Mich.

Unlike other authoritative works on the subject, this book is written in non-technical terms so that it can be read with interest by every member of the family. Published as "Bulletin No. 1" of the Institute's "popular education series," it is to be distributed free to schools for use as a classroom reference, to public libraries and to community organizations working for betterment of dwelling conditions. Copies will be supplied to individuals upon request to the Holland Institute of Thermology of Holland, Mich.

Shows Dry-Air Menace.

Scientists' reports are cited, showing that the atmosphere in most American homes is as dry as that over deserts. The effects of this condition—in causing colds and other sickness, in depriving the American miss of her natural complexion, and in making rugs and carpets fuzz and wear out—are described.

Then the booklet states the correct air condition as 70 degrees of warmth and 45 per cent relative humidity. To show just how this deal can be attained in every home, the Institute's engineers have calculated the amount of moisture that must be supplied in homes of every size.

Describes All Humidifiers.

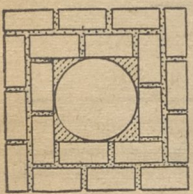
The booklet closes with a discussion of all the household humidifiers that home owners have to select from, including the automatic air moistener that is part of the vapor-air heating system.

Publication of the "popular education series" of books on air conditions in the home is in line with the Institute's object "to teach the American home owner the science of healthful heating through the control of temperature, humidity and air motion."

**HEATER REQUIRES
ROUND FLUE FOR
BEST OPERATION**

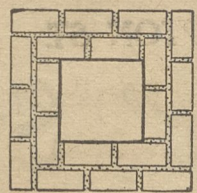
All chimney flues have one of four shapes—round, square, rectangular or oval—and it makes a lot of difference which one it is, according to the Holland Institute of Thermology of Holland, Mich.

Smoke and gases from the heating plant rise through the flue in the form of a spiral. A round flue accommodates this motion without retarding the gases by friction. But a chimney with a flue of any other shape produces friction.



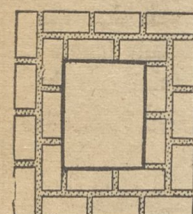
Round Flue
the Best.

So in any home modernizing program, the chimney should be inspected and if its shape and size are not correct, the chimney should be rebuilt in accordance with the best modern practice. The inspection should be done by a reliable heating company that employs the scientific instruments required to show the volume and velocity of draft and all other factors of chimney efficiency. To home owners who do not know a company of this sort that will do the inspection without charge, the Holland Institute of Thermology will supply the names of such concerns in their localities.



Square Flue
Not as Good.

Chimneys in new homes should be planned on the principles outlined here. And, once a round straight flue of proper area and sufficient height is built, it should be kept clean of soot and dirt. The best way to do this is the suction cleaner method, by which the entire heating system, of any kind whatever, is thoroughly cleaned without the slightest trace of mess or litter in the home.



Rectangular
Least Efficient.

Moves Air Without "Drafts"

Just what is a draft? The Holland Institute of Thermology of Holland, Mich., answers that, according to modern ventilating standards, a draft is a current of air more than 5 degrees cooler than the surrounding air. The super-circulating warm air system used in summer to keep the home cool as well as in winter to keep it warm, performs its summer function without drafts. For the air it circulates is only slightly below the general temperature level, yet it has a cooling effect as high as 14 per cent because of the air motion it keeps up

**Most Automobile
in the whole World
for less than \$1000**

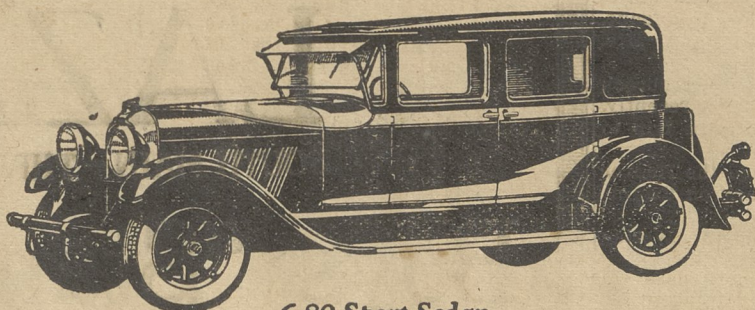
NEW SERIES SIX
MODEL 6-80

995

Seeing Is Believing

It has a longer wheelbase, a stronger frame, a more powerful motor and a larger body than any car under \$1000. It affords more room, comfort and refinements. It gives full advantages of a really fine BIG car. Not cramped or cheapened in any way. It holds the road better, handles easier and performs smoother. It is a safer car to ride in and a more durable car to invest in. If this sounds exaggerated, remember we put it entirely up to the car itself to prove all of these claims. You will find improvements found in no other car under \$1000. You will find advantages you thought were obtainable only in high priced cars. You will find that if the car does not sell itself you will not be asked to buy.

120-inch wheelbase; Lycoming motor; Strongest of frames—7 inches deep; Bijur chassis lubrication; Hydraulic, internal expanding four wheel brakes; Hydraulic shock absorbers; Re-enforced bodies; Finest of mohair upholstery and luxura springs; Metal side quarters; Non-glare Brewster windshield; Cam and lever type steering; Lower center of gravity; New type wood wheels; Corona proof ignition wires; Steel running boards; Electro lock; Starter button on dash; Large head lamps and plate glass.



6-80 Sport Sedan

**The Greatest
STRAIGHT EIGHT
Value in the World**

NEW SERIES
MODEL 8-90

1395

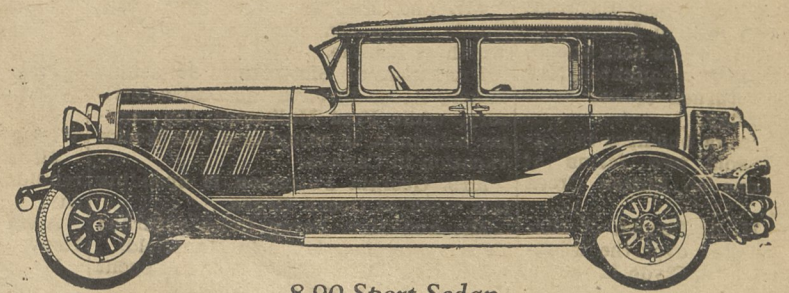
Another New Winner

Progress must be swift and unerring for leadership in the automobile business. A factory cannot rest on yesterday's success. It must excel itself anew or lag behind. Auburn forges farther in front with this new Series Straight Eight. Auburn's far-sighted program, coupled with our policy of passing back to the consumer the benefits of Auburn's growth, enable us to shatter all precedent by introducing this, the most astonishing Eight cylinder car ever on the market. Everywhere people are amazed at its value. Competition concedes it forces a complete revision of standards of comparison. Never has there been a car of its high character available at its low cost. If you have not seen and driven this Eight you are missing the "buy" of the year.

Lycoming motor; Strongest frame under any car; 125-inch wheelbase; More horsepower than any other stock car per size; Dual carburetion; dual manifold; Bohalite steel strut pistons; Thermostatic heat control; Cam and lever steering; Bijur chassis lubrication; Four wheel, hydraulic internal expanding brakes; Four hydraulic shock absorbers; Brewster non-glare windshield; Starter button on dash panel; Luxura type upholstery springs and genuine curled hair.

AUBURN AUTOMOBILE CO., AUBURN, INDIANA

Prices f. o. b. Auburn or Connersville, Ind. Freight and equipment extra.



8-90 Sport Sedan

AUBURN

BOOPS

Corner South and So. Main Street
WILKES-BARRE, PA.