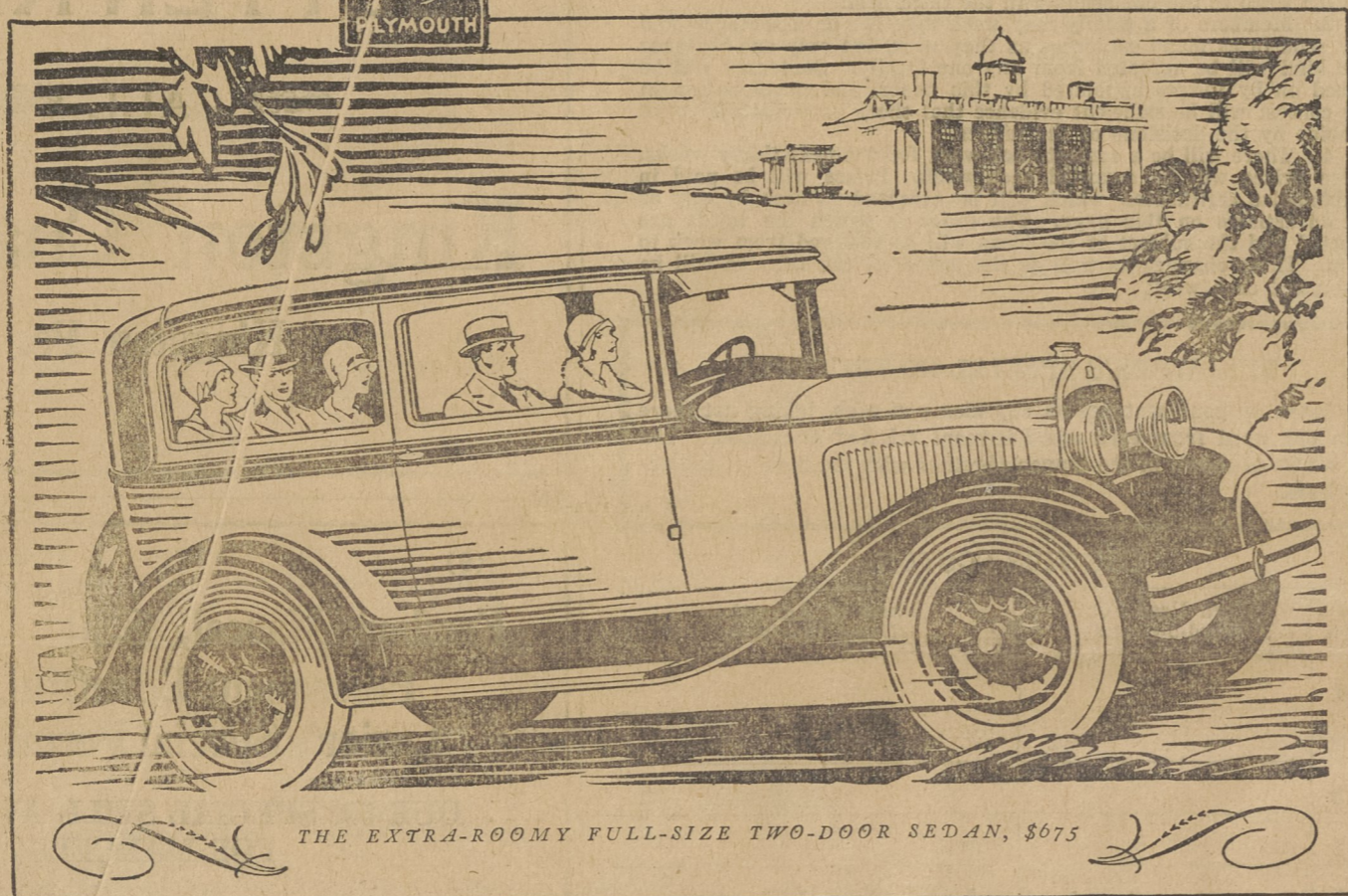


CHRYSLER MOTORS PRODUCT

# Plymouth has the stamp of Chrysler Quality — not the look of Low Price

FULL SIZE



THE EXTRA-ROOMY FULL-SIZE TWO-DOOR SEDAN, \$675



PLYMOUTH—product of Chrysler engineering and craftsmanship—has been so named because its endurance and strength, ruggedness and freedom from limitations so accurately typify that Pilgrim band who were the first settlers of Plymouth and among the first American Colonists.

expanding four-wheel hydraulic brakes—the safest ever devised.

Yet for all its size, Plymouth is so perfectly balanced and so skillfully engineered that unsurpassed economy of operation and upkeep is assured.

For reasons of both pride and purse, Plymouth is today's finest investment in the lowest-priced field—the one car of that field that reflects fine quality without even the suggestion of low price.

Coupe, \$655; Roadster (with rumble seat), \$675; 2-Door Sedan, \$675; Touring, \$695; DeLuxe Coupe (with rumble seat), \$695; 4-Door Sedan, \$695. All prices f. o. b. factory. Plymouth dealers are in a position to extend the convenience of time payments.

**PLYMOUTH**  
205  
AMERICA'S LOWEST-PRICED  
FULL-SIZE CAR

YOU can be proud to own a full-size Plymouth, the Chrysler Motors car in the lowest-priced field:

**\$655**  
and upwards  
f. o. b. factory

—proud, because Plymouth is so typically Chrysler in performance—so swift in traffic, so eager on hills, so

—proud, because the Plymouth is a full-size car, not a miniature—a comfortable car in which you and your family and friends can always relax to the fullest, instead of feeling crowded and cramped;

—proud, because Plymouth has a distinctively Chrysler-like style and manner, a richness and dignity not to be found in other low-priced cars;

competent in maintaining top speeds, hour upon hour, smoothly, quietly and without effort.

Plymouth is full-size and full-quality in every single particular.

In addition to its full-size body, its full-size chassis, its full-size modern engine, its full-size axles—Plymouth gives you the easy control of Chrysler full-size weatherproof internal-

## JAMES R. OLIVER

Direct Dealer

### CHRYSLER PLYMOUTH

Main Street

Dallas, Pa.

TELEPHONES 2610 FREE DELIVERY

The Big Food Market

# LARE'S

THE BEST EATS FOR THE LEAST MONEY

188 MAIN ST. LUZERNE PA.

## BEST OF FRESH FISH

Selected Butterine at Cut Prices