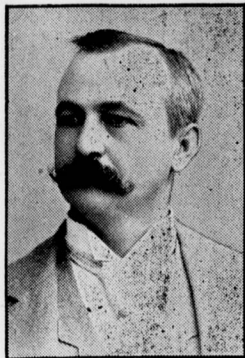


# CONVENTION OF MYSTIC CHAIN

Continued from First Page.  
vention will be attended by about 140 representatives from the 260 castles in the state. It is seldom that a town the size of Freeland is chosen as a meeting place by so large an organization as the Knights of Mystic Chain, and in view of this fact it devolves upon the people of town to give the representatives of the order cordial greeting and generous treatment, to the end that the fame of our citizens as entertainers may be carried to all sections of the state by those who will gather here next week.

Were it not for the unfortunate labor troubles of the past few months, Freeland would undoubtedly have been better prepared to receive such a distinguished gathering. Nevertheless, the members of Loyal Castle have the arrangements in excellent shape, and they expect that the select castle will find Freeland a town which its representatives can look back upon in future years as the place where the most pleasant convention in its history was held.

select marshal, F. W. Bittner, Lebanon; select inside guard, William Thorpe, Philadelphia; select outside guard, George H. Dressell, Wilkesbarre; trustee,



HARRY LIEM, Wilkesbarre, Lieutenant-Colonel, A. O. K. of M. C.

tee, W. D. Chandler, Strasburg; supreme representatives, Robert McCaughey, Philadelphia; J. W. Hamer, M. D., Johnstown; Richard Muse, Pittsburg; Joseph



JOHN J. DAVIS, Pittsburg, Select Recorder and Corresponding Scribe, Ancient Order Knights of Mystic Chain.

The state officers of the order are as follows: Select commander, W. W. Wetzel, Allentown; select vice com-



JACOB STETZER, Wilkesbarre, Colonel, A. O. K. of M. C.

mander, Thomas Potts, Johnstown; select scribe, J. J. Davis, Pittsburg; select treasurer, J. B. Loezer, McKeesport;

Williamson, Scranton, and Dr. J. D. Erdman, Allentown.

The officers of Loyal Castle, No. 65, of Freeland, are as follows: Commander, George H. Thomas, vice commander, J. J. Shaffer; marshal, John Klugerman; chaplain, Robert Bell; recording secretary, J. W. Bell; financial secretary, Alfred Widdick; treasurer, Henry Fisher; inner guard, George Bechtloff; outer guard, Lewis Bechtloff; trustee, George Bechtloff.

The officers of Freeland Company, Military Rank, are as follows: Captain, Guy Sensenbach; first lieutenant, Theodore Klegge; second lieutenant, R. E. Selpie; orderly sergeant, Newton Roberts; first sergeant, John J. Shaffer; second sergeant, W. L. Boyle; Quartermaster, Joseph Mowry.

The officers of Degree of Naomi, Daughters of Ruth, of Freeland, are as follows: Past commander, Mrs. Jane DeFoy; commander, Mrs. William Burkhardt; vice commander, Mary Ann Bell; conductor, Mary Weiss; secretary, Sarah Zelsloft; financial secretary, George H. Thomas; treasurer, Mrs. William Jenkins; inside guard, Lizzie Bechtloff; sentinel, George Bechtloff; chaplain, Clara Marley; trustee, Mrs. Albert Geopert.



J. G. LEEZER, McKeesport, Select Treasurer, Ancient Order Knights of Mystic Chain.

## PROGRAM

Of the Parade and Drill Contests of the Military Rank.

Following is a copy of General Order No. 10, issued by General W. D. Low, of Pittsburg, general commanding A. O. K. of M. C., relative to parade and military contests on Tuesday:

### FORMATION AND ROUTE.

Police Escort.  
Chief Marshal,  
Major Stephen Drasher and Aides.  
General W. D. Low and Staff.  
Music.

### First Division.

General P. J. M. Heindel and Staff.  
Colonel Jacob Stetzer and Staff.  
Pioneer Band, Allentown.  
Military Company, Allentown.  
Military Company, Lancaster.  
Colonel W. N. Morningstar.  
Military Company, Scranton.  
Military Company, Wilkesbarre.  
Military Company, Freeland.  
Visiting Military Companies.

Carriages—Ladies' Rank, Daughters of Ruth.

### Second Division.

Liberty Band, Hazleton.  
Hazleton Castle, Hazleton.  
Loyal Castle, Freeland.  
Visiting Castles.

### ORDER OF THE DAY.

First.—Company commanders will report upon their arrival to the commander of their regiments for instructions as to the general inspection and place in line, etc.

Second.—Military will form on Front and Washington streets.

Third.—Carriages will form in rear of Military Rank.

Fourth.—Subordinate castles will form in rear of carriages.

Fifth.—Parade will move promptly at 2 p. m. over the following route: Down Washington to Carboth, to Centre, to Walnut, to Birkbeck, to Front, to Centre, to Tigers Athletic park for competitive drills.

Sixth.—Competitive drills will take place immediately after parade and review.

General Charles Uhl, C. S. Reidel and General Samuel Fox will have command of the companies entered for competitive drill. Commanders of companies will report to these officers when they



JAMES E. McGAHAN, Pittsburg, General, A. O. K. of M. C.

arrive at drill grounds for instructions, etc.

### JUDGES OF COMPETITIVE DRILL.

Captain J. C. Kenney, Wilkesbarre, Company B, Ninth regiment, N. G. P.  
Captain Andrew Lee, Hazleton, formerly Captain Company G, Ninth regiment, N. G. P.

First Lieutenant Isaac D. Ravent, Lattimer, Company G, Ninth regiment, N. G. P.

Prizes: First, \$100; second, \$60; third, \$40.

Ten dollars will be paid to each company appearing in line and not successful in winning any of the above prizes.

### GENERAL INFORMATION.

Annual meeting of the Military Rank will be held on Tuesday evening, September 9, 1902, in P. O. S. A. hall, 7.45 p. m. Important business to be transacted. All members of the Military Rank are expected to be present.

All ex-members of the Military Rank are hereby cordially invited to participate in the parade, in honor of the thirty-second annual convention of the select castle of Pennsylvania. Members attending the session and wishing to participate will kindly report in full uniform to General Oliver A. Iobst, who will assign them a place in line. General military headquarters will be at the Central hotel.

### By Command,

W. D. Low, General Commanding, A. O. K. of M. C.  
Oliver A. Iobst, Adjutant General.

In addition to the meeting of the select castle, the representatives of Degree Naomi, Daughters of Ruth, the ladies' branch of the Knights of Mystic Chain, will hold their state convention at the same time in P. O. S. of A. hall.

## THE ORDER.

Brief Synopsis of Its History, Objects, Aims and Purposes.

BY JUDGE J. B. BLACK, PHILADELPHIA.

"Native and to the manor born," the organization is the fraternal child of Pennsylvania, once out of the brain and conscience of a Pennsylvania mechanic this fraternal edifice, now seconded to none in the beauty of its civic, social and fraternal virtues and the glory of its beneficial achievements was evolved. John O. Matthews, the founder, organized the first Castle in the City of Reading, Feb. 2nd, 1871, and from this first born of the fraternal household of the

### MYSTIC CHAIN

a royal family has been born. Pennsylvania, New York, New Jersey, Delaware, Maryland, Virginia, West Virginia, Ohio, Connecticut, Rhode Island, Massachusetts and other States, make up the galaxy of its fraternal Commonwealth and comprise a community of Neighborhood the peers of and in this age of Fraternity.

### DECLARATION OF PRINCIPLES.

While this Order is kindred in spirit, aim and purpose with other organizations founded on the Fatherhood of God and Brotherhood of Man, and bids them God-Speed in the common work of all, especial significance emphasizes its principles in their relation to the culture, growth and development of those civic, social and moral virtues which underlie our nationality our Christian civilization—the principles of Civic government, founded upon the products of God's laws and crystallized around the charter of our liberty, and woven into the woof and warp of our government.

### CIVIC MANHOOD AND CIVIC VIRTUE.

While the Order is non-political and non-sectarian, its stands for and champions an equality in citizenship and manhood based upon actual character and not the accident of birth; for a brotherhood of mutual duties, mutual dependence and interdependence; for wealth in the arts and achievements of civic, intellectual and social power; for liberty defended and defined by law; for a civic manhood and citizenship strong on its might of justice, on its purity and honor and great in the magnanimous quality, civic and moral of Christian manhood, true to the tradition and teachings of our fathers—that free men and free homes, find their surest guarantees and stoutest defences in popular intelligence and public free schools.

### LOYALTY, OBEDIENCE, FIDELITY.

This motto of the Order is the pledge and guarantee of its performance. It is not a colat legal, cruelty technical, or a selfishly soul-less organization; it is broad and liberal, Christ-like in the measure of its beneficence, and God like in its justice, resting upon the moral law, and, unlike the Crusading Knights of the dawn days, is tending its triumphant march not toward the conquest of the sepulchre of Christ but toward His Blessed Spirit.

In this epitome of the principle, of

## Everything New IN Furnishings

We have all the little things that a gentleman can wish for his summer dressing. Our "little necessities of life," all of which must be proper to make the "finished man," are faultless in every detail. If you want a pair of shoes, a hat, a shirt, a tie, or a pair of socks in the handsome, stylish colors of summer, you can get them here.

Although our goods are fancy in looks, as they should be, they are not fancy-priced.

We can supply you with the latest productions of the market at prices to suit the times.

Step in, and see what we can do for you.

## McMenamin's Gents' Furnishing, Hat and Shoe Store.

South Centre Street.

## RAILROAD TIMETABLES

LEHIGH VALLEY RAILROAD,  
May 18, 1902.

### ARRANGEMENT OF PASSENGER TRAINS.

#### LEAVE FREELAND.

- 6 12 a m for Weatherly, Mauch Chunk, Allentown, Bethlehem, Easton, Philadelphia and New York.
- 7 29 a m for Sandy Run, White Haven, Wilkes-Barre, Pittston and Scranton.
- 8 15 a m for Hazleton, Weatherly, Mauch Chunk, Allentown, Bethlehem, Easton, Philadelphia, New York, Delano and Pottsville.
- 9 58 a m for Hazleton, Delano, Mahanoy City, Shenandoah and Mt. Carmel.
- 11 45 a m for Weatherly, Mauch Chunk, Allentown, Bethlehem, Easton, Philadelphia, New York, Hazleton, Delano, Mahanoy City, Shenandoah and Mt. Carmel.
- 11 4 a m for White Haven, Wilkes-Barre, Scranton and the West.
- 1 44 p m for Weatherly, Mauch Chunk, Allentown, Bethlehem, Easton, Philadelphia, New York, Hazleton, Delano, Mahanoy City, Shenandoah, Mt. Carmel and Pottsville.
- 3 35 p m for Sandy Run, White Haven, Wilkes-Barre, Scranton and all points West.
- 7 29 p m for Hazleton.

#### ARRIVE AT FREELAND.

- 7 29 a m from Pottsville, Delano and Hazleton.
- 12 a m from New York, Philadelphia, Easton, Bethlehem, Allentown, Mauch Chunk, Weatherly, Hazleton, Mahanoy City, Shenandoah and Mt. Carmel.
- 9 58 a m from Scranton, Wilkes-Barre and White Haven.
- 11 41 a m from Pottsville, Mt. Carmel, Shenandoah, Mahanoy City, Delano and Hazleton.
- 12 35 p m from New York, Philadelphia, Easton, Bethlehem, Allentown, Mauch Chunk and Weatherly.
- 4 44 p m from Scranton, Wilkes-Barre and White Haven.
- 6 35 p m from New York, Philadelphia, Easton, Bethlehem, Allentown, Mauch Chunk, Weatherly, Mt. Carmel, Shenandoah, Mahanoy City, Delano and Hazleton.
- 7 29 p m from Scranton, Wilkes-Barre and White Haven.

For further information inquire of Ticket Agents:  
ROLLIN H. WILBUR, General Superintendent,  
26 Cortlandt Street, New York City.  
CHAS. S. LEE, General Passenger Agent,  
26 Cortlandt Street, New York City.  
G. J. GILDROY, Division Superintendent,  
Hazleton, Pa.

### THE DELAWARE, SUBQUANNA AND SCHUYLKILL RAILROAD.

Time table in effect May 19, 1902.

- Trains leave Drifton for Jeddo, Eckley, Hazle Brook, Stockton, Beaver Meadow Road, Houn and Hazleton Junction at 6:00 a. m., daily except Sunday; and 7:07 a. m., Sunday.
- Trains leave Drifton for Onedia Junction, Harwood Road, Humboldt Road, Onedia and Shepperton at 6:00 a. m., daily except Sunday; and 7:07 a. m., 2:38 p. m., Sunday.
- Trains leave Hazleton Junction for Onedia Junction, Harwood Road, Humboldt Road, Onedia and Shepperton at 6:22, 11:10 a. m., 4:41 p. m., daily except Sunday; and 7:57 a. m., 3:11 p. m., Sunday.
- Trains leave Drifering for Tomhicken, Cranberry, Harwood, Hazleton Junction and Houn at 5:00 p. m., daily except Sunday; and 3:07 a. m., 5:07 p. m., Sunday.
- Trains leave Hazleton for Beaver Meadow Road, Stockton, Hazle Brook, Eckley, Jeddo and Drifton at 5:40 p. m., daily, except Sunday; and 10:10 a. m., 5:40 p. m., Sunday.
- All trains connect at Hazleton Junction with electric cars for Hazleton, Jansenville, Audenried and other points on the Traction Company's line.

You should ride a  
Bicycle,

## RAMBLER.

\$35 to \$65.

## Call and Examine.

A complete stock always on hand.

For Sale By

## Walter D. Davis,

Freeland.



PRINTING  
Promptly Done at the Tribune Office.