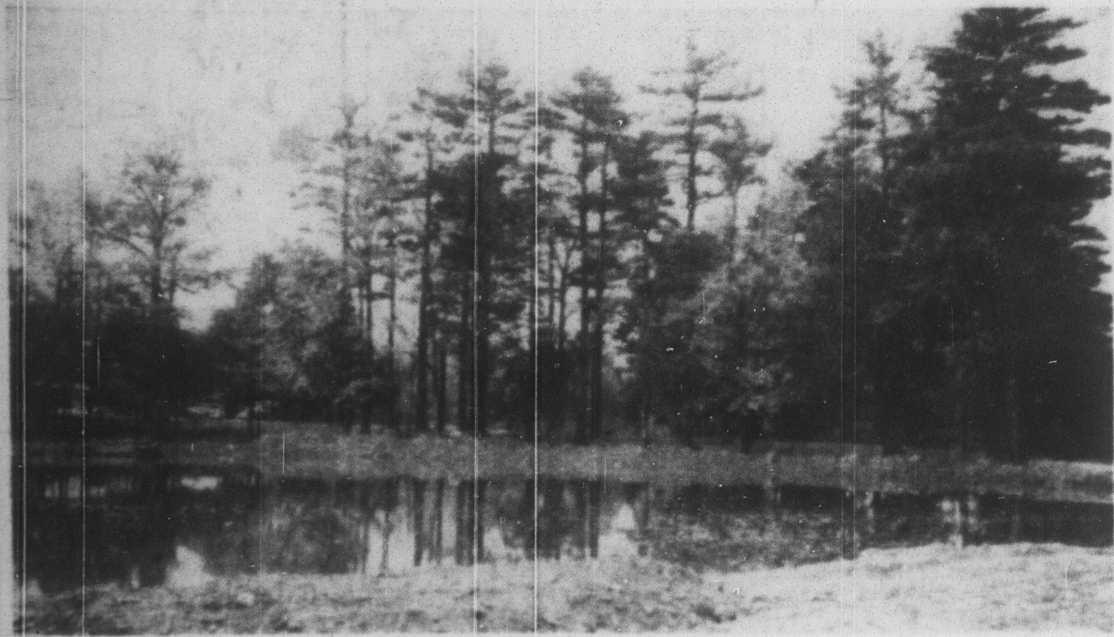


LAUREL RUN SPORTSMEN'S CLUB COMPLETES DAM



An overall view of the new fishing dam at Dysart area and the Robert Hill Coal Co. is shown above. Dedication services were held last Sunday during the Laurel Run Sportsmen's Club, residents of Dysart a sportsmen's picnic at the site.



The spillway of the new dam is an excellent example of what can be done when a group of civic-minded citizens and sportsmen work together to complete a project for the mutual benefit of both groups. The spillway of cut stone is a tribute to the craftsmanship of the men who worked on the project in their spare time. The dam is located in the middle of the community of Dysart.

Sportsmen's Club At Dysart Completes Fine New Dam

Fishing, Fire Protection Both Provided By Pool

(The following item from the Altoona Mirror, of last Friday, is of interest to many of our readers in the Clearfield Valley area.)

"We have completed our fishing dam and wondered if you might like to take some pictures. Just a simple statement, but few people realize that behind that statement by members of the Laurel Run Sportsmen's Club at Dysart lay long hours of back-breaking labor for what in the middle of the group was just a

discouraging, but finally the dam was completed—a tribute to the ingenuity and foresight of the group.

The dam site has a historical background. For many years it was the site of summer homes of the Baldrige, Conrad and Dysart families, the town being named for the latter family. At that time there was a smaller dam at the present location. When the families gave up their interests the area was taken over by a water company headed by the late Charles M. Schwab, who proposed to build a dam to provide water for the village of Dysart, and also pipe the water to Letort. A small dam was built to supply water for the village, but the pipeline to Letort failed to materialize. Recently the school district and citizens of the village supplied workmen to clean

Year Around Attraction



By VERA WINSTON

IT'S not difficult at all to find an enduring place in the wardrobe for the good, summer-into-fall suits and dresses that our manufacturers have produced at such down-to-earth prices. Here is one that is good at any time of year whenever and wherever the climate indicates. It is of brownish gray imported cotton with black velvet collar and bow-trimmed pockets. The jacket fastens with small, blending pearl buttons. The skirt is straight and narrow with a kick-pleat in back.

out the dam to improve the water supply.

The stream from the village water supply dam to the sportsmen's dam, a distance of about three-fourths of a mile, has been staked with trout, as has the sportsmen's dam.

Officers of the Laurel Run Sportsmen's Club are: President, C. R. Logan, vice president, Donald Hale, secretary, James L. Passanita, and treasurer, George Conzo.

The sportsmen had an open house for the public last Sunday afternoon.

Don't Be Alarmed If Johnny Eats Dirt Practice Usually Lasts Short Time, Is Harmless

"Sammy, what are you eating?" "Dirt, Mom, but it's clean dirt." Parents become alarmed when they first learn that their children actually eat dirt.

Known as pica, and geophagia, dirt-eating among children is usually short-lived and harmless. When adults manifest a craving for dirt, it is assumed there is a lack of certain essential factors in the diet.

There is little evidence to suggest that the eating of reasonably small amounts of dirt is in any way injurious.

Patients swallow chalk of kaolin, and minerals derived from the earth such as salt, iron and mercury, without hesitation when prescribed by a physician.

Earth is eaten in many parts of the world for medicinal purposes and during ceremonial rites. Women in Tripoli and India fre-

1955 Tulip Queen



ROSEMARY GILLIAM, 1955 National Tulip Queen, greets a shipment of Dutch bulbs on arrival in New York aboard the liner Westerdam from Holland. It symbolizes the beginning of the fall planting season. During the next few months, American gardeners will plant more than 300,000,000 tulip, hyacinth and daffodil bulbs that will bloom in spring of 1956. (International)

quently eat dirt and in Koluth it is common practice for women to eat clay to improve the complexion.

Fuller's earth has been used in many countries for a variety of physical disorders.

Chaucer spoke of Armenian earth as an antidote for poison and Pliny in the First Century declared the Samian Stone was a treatment for illness.

People in some of the Southern states chew twigs dipped in kaolin, a white chalk.

Sang-i-Basri is rated an edible earth exported from the Persian Gulf to many parts of the world.

The habit of dirt-eating or clay-eating in many countries dates back to ancient times.

The Boston Medical and Surgical Journal in 1868 reported the

case of a man who was addicted to chalk-eating, when he claimed the same relieved his indigestion. In 25 years he claimed to have eaten one-half ton of chalk and aside from some gastric irritation, he apparently enjoyed good health.

Easier Financing For Home Repairs Is Available Now

The owner of a home financed through an FHA loan can take advantage of the new "open end" provision of his mortgage for such improvements as a new roof

or new asbestos-cement siding, provided the expenditure does not exceed the amount already amortized, according to agency officials.

Under the "open end" plan, a part of the Housing Act of 1954, the home owner may borrow again (on his original mortgage) for improvements that protect or advance the property's livability. Sometimes the life of the mortgage is extended to keep payments at the same rate. Again, larger payments may be set up so that the mortgage will be paid up as originally set.

If the loan is to be used to provide additional living quarters, such as a new room or wing, money can be borrowed beyond the original amount of the mort-

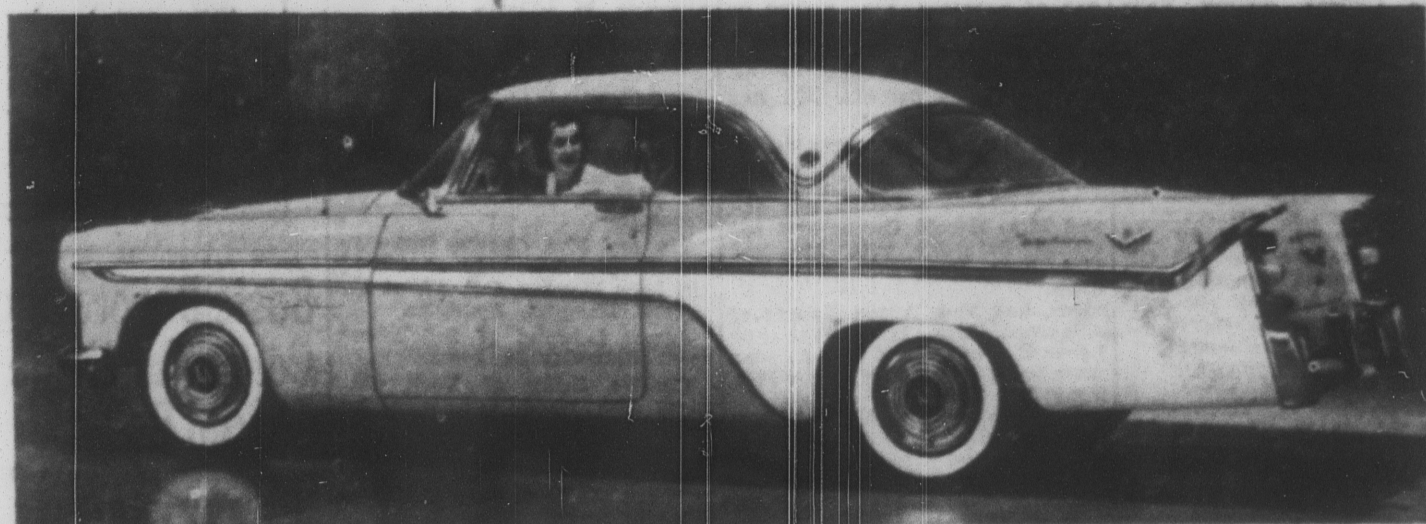
gage. The provisions of Title I, permitting modernization loans up to \$2,500, have been continued. They must be repaid in three years.

—Press-Courier ads pay better.

Words of the Wise

The men whom I have seen succeed best in life have always been cheerful and hopeful men, who went about their business with a smile on their faces, and took the changes and chances of this mortal life like men, facing rough and smooth as it came.

—(Charles Kingsley)



On Display Today DESOTO FOR 1956

Designed for the super-highway age! With New push-button drive selector... New Flight-Sweep styling. See and drive the exciting 1956 De Soto today!

SPANGLER MOTOR CO.

BIGLER AVE.

SPANGLER, PA.

COLVER STORE CO.



Take advantage of these great savings during this BIG FALL HARVEST SALE. Never before have we had such money-saving values on foods. You save plenty on any item you buy, but the big saving is on CASE LOTS. Don't forget the BIG NICKEL Savings on each dollar you spend for foods. You can't beat these prices anywhere. Try COLVER STORE and see!

Name	Can Size	Six Cans	Twelve Cans	Case of 24 Cans	Price Each Can by the Case
Pointview Peas	303	89c	\$1.69	\$3.25	13½c
Pointview Whole Kernel Corn	303	89c	\$1.73	\$3.29	13c
Pointview Cream Style Corn	303	89c	\$1.77	\$3.33	14c
Nomis Green Beans	303	89c	\$1.45	\$2.79	11c
Nomis Tomatoes	303	89c	\$1.69	\$3.25	13½c
Nomis Kidney Beans	303	89c	\$1.29	\$2.49	10½c
Furman's Sliced Beets	303	89c	\$1.69	\$3.25	13½c
Pointview Mixed Vegetables	303	89c	\$1.77	\$3.33	14c
Nomis Wax Beans	303	89c	\$1.69	\$3.25	13½c

THE BIGGEST SALE OF ALL SALES ON CANNED GOODS...

— BUY IN QUANTITY AND SAVE PLENTY! —

LIBBY'S Catsup 5 for \$1.00 <small>14-Oz. Bottles</small>	BELLVIEW 2-Fruit Jelly . . 3 for \$1.00 <small>2-Lb. Jar</small>
HUNT'S Tomato Sauce 11 for \$1.00 <small>8-Oz. Can</small>	ROSEDALE 3 for \$1.00 <small>No. 2½ Can</small>

PLATE BOIL LEAN, FRESH BEEF 6 LBS. 99c	FRESH ROLL ARMOUR'S SAUSAGE LB. 39c
Pork Butt . . . Lb. 45c	Chickens <small>2-3½ lbs. Young Roosters</small> Lb. 47c

GARDEN-FRESH PRODUCE	
TOKAY Grapes 2 lbs. 27c	GOOD SIZE Grapefruit 8 for 59c
Chestnuts Lb. 23c	GIANT SIZE Florida Oranges Doz. 59c
U. S. NO. 1 WHITE POTATOES Lb. 99c	JONATHAN APPLES Bushel \$1.49

— STORE-WIDE BARGAINS IN OUR FALL SALE! —

COLVER STORE CO.

REESE AVE. COLVER, PA.

MURPHY'S HALLOWEEN COSTUMES

Children's Colorful Costumes

Better grade costumes of rayon, heavy flannels and prints with lots of details. Unusual selection of characters for boys and girls, complete with masks **\$2.98**

At \$1.98 you'll find Gypsy Girl, Jet Pilot, Black Cat, Buster Bear, Circus Clown, Devil, Dog, Duck, Fox, Leopard, Mouse, Pirate, Witch and Skeleton **\$1.98**

• Small 4-4
• Medium 8-10
• Large 12-14

Hallowe'en Masks

Full face masks in kitten, rabbit, clown and devil . . . all with bells attached, at **25c**

Authentic Walt Disney characters . . . Lady, Peter Pan, Donald Duck, Pluto, Mickey Mouse, Dopey and others! **29c**

G. C. Murphy Co. Phila. Ave. BARNESBORO