

J. V. Hammond Co. In Midst of \$130,000 Expansion Program

Huge Dry Kiln, Dimensional Mill Being Built At Spangler

57-Year-Old Firm Adds Other Lines to Former Business of Manufacturing All Kinds Mine Supplies

J. V. Hammond Company, Spangler, is currently undergoing a \$130,000 expansion program. The first phase of the work is expected to be completed by the end of this month.

According to J. V. Hammond, owner and operator of the Spangler lumber firm, the huge undertaking will include three separate buildings and modernization programs.

The expansion now taking place includes the completion of a new \$5,000 saw mill, a new modern \$75,000 dry kiln, and a \$50,000 dimensional mill. All three new buildings are being built on the six-acre Hammond Company grounds in Spangler Borough.

The current expansion is another step in the long success of the Spangler firm, which ships its various types of products all over the United States, South America, Canada, Europe and even Africa. J. V. Hammond, owner, succeeded his father in the business in 1934 after the latter had operated the firm since 1898. The Hammond lumber business, however, dates back more than a century, having been established by Mr. Hammond's grandfather in Clearfield County. It has been in continuous operation in the Spangler area since before the turn of the century.

Heading the list of the new operations to be added by the lumber firm is the \$75,000 completely modern dry kiln. The new fireproof kiln, when completed, will be one of the largest in the state of Pennsylvania. "It is the most modern kiln money will buy," Mr. Hammond said. He expects it to be in operation by the first of September.

The new kiln, constructed of solid brick with a concrete roof, will be completely fireproof. The brick in the structure, totaling \$6,000 of the large 4 by 5 inch size, were all purchased from the Patton Clay Manufacturing Company. The kiln structure measures 103 1/2 feet long, by 30 feet deep and 28 feet high. The material for the kiln, including the fully automatic 100 horsepower steam generator of the latest type, and the heating units, is being supplied by the Moore Dry Kiln Company of Jacksonville, Florida, largest manufacturer of dry kilns in the world. The new kiln is divided into three sections. Heat generated in the kiln will rise to 220 degrees temperature for the complete curing process.

Lumber will be stacked in the kiln 16 feet high and will be loaded and unloaded by means of a high-lift. The kiln is a trackless kiln and will not feature the regular kiln cars commonly used.

When in operation the new kiln will have a capacity for treating 100,000 board feet of lumber at one time, or the equivalent of seven railroad box car loads. Mr. Hammond said he also expects to be able to build up a transit lumber drying trade for other lumber firms when the new kiln is in operation.

The new kiln will be the only large scale commercial kiln in this district. Operations of the same size nearest this area are now located in Titusville and in Union City.

Accompanying the new dry kiln of the Spangler operation will be a completely modern dimensional mill, which will be constructed at a cost of \$50,000. The dimensional mill will finish the lumber taken from the dry kiln and will be housed in a 150 by 75 foot frame building which will also be used for storing lumber taken from the kiln.

Although a clearing is now ready for the dimensional mill, the building will not be started until the kiln is finished. Machinery used in this latter operation will also be of the latest type.

The site for the dimensional mill is adjacent a railroad siding on the Hammond grounds.

The new saw mill, which is expected to be in operation within a very short time, will be the second saw mill on the company's six-acre plot of ground in Spangler.

J. V. Hammond Company has manufactured mine supplies for the past thirty-five years. The firm still produces mine roller tool handles, broom handles and rubber stamp handles. Mr. Hammond, the energetic owner, is well known for his inventions. In 1942 he had patented a dynamite box which he now manufactures and ships all over the country as well as to foreign countries. He also has patented a wedge roof bolt for mines, but the manufacture of this product has not yet been started.

When the work in the coal mines began to taper off the Hammond firm overcame the slowing down of its work by adding other products in the line of wood. This bit of foresight paid off. In the past four years the Hammond firm has worked full time. Going into the dry kiln and dimensional work will help to strengthen this working ability.

The lumber business consists mainly in timber and logs to be processed for the manufacture of furniture. Mr. Hammond buys his lumber from over 200 persons within a fifty mile radius of Spangler. Although a large portion of the logs are processed at the Spangler operation, the Hammond firm also purchases a large portion of the manufactured lumber from other area mills. Mr. Hammond said that this year it is estimated that the firm will process about 2 million board feet and handle another 3 million board feet. At the present time the company works approximately 15,000 feet per day.

"Last year the company purchased about a half million dollars worth of timber and logs," Mr. Hammond said. "This year we estimate that this amount will jump to approximately \$1 million after the new kiln and dimensional mill are placed in operation."

The Spangler businessman said that when the new kiln and dimensional mill are moving in full operation the company will process and handle between 7 and 10 million board feet of lumber per year. "Add 15,000 board feet per day to the present 15,000 board feet now being worked, and the result will double with the installation of the new operations," Mr. Hammond said.

When the kiln and dimensional mill are operating the firm will direct its work chiefly to the processing of lumber for television cabinets, furniture of all kinds, table legs, glued-up dimensionals for vocational schools, corestock plywood, knotted cherry panel, flooring and other various items.

Mr. Hammond said that at all times there is approximately 700,000 feet of timber and logs stored on the company's grounds.

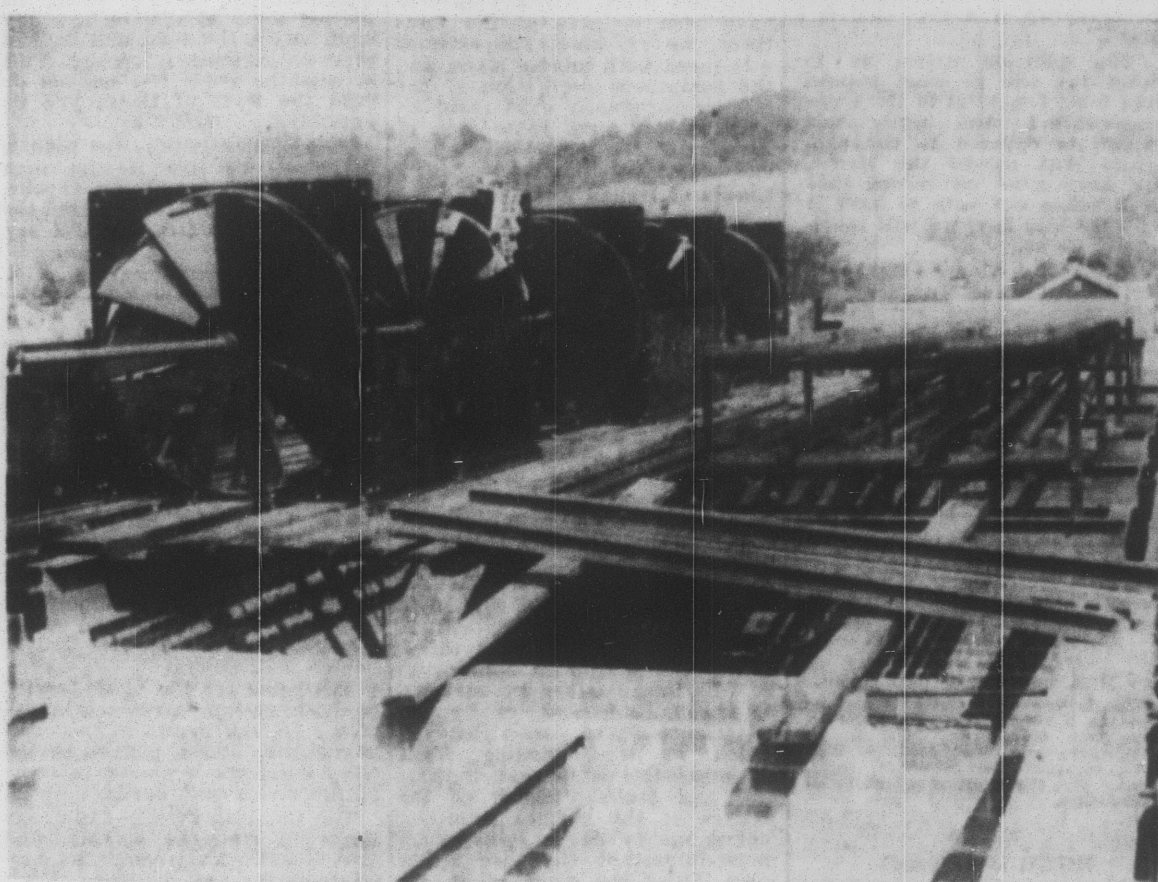
Mr. Hammond said that with the added 15,000 feet of lumber per day to be worked by the firm after the new program gets underway, it will mean that approximately 50 or 60 added men will be needed in the woods and in other work by individual lumber firms outside the Hammond Company, to produce the raw material. All of this raw material will be purchased locally.

At the present time the Spangler firm employs 35 men, ten of these men employed just this past month. Robert Doran is general superintendent and lawyer for the firm. P. J. Doran serves as sales manager and Urban Weaver is production superintendent.

John Baker is serving as the construction superintendent in charge of the current building program and A. J. Clarke of the Moore Kiln Co., is in charge of installing kiln equipment.

Operation of the new kiln,

HERE ARE THE HEATING UNITS



Pictured is just one section of the heating units measures 103 1/2 by 30 1/2 feet, and is being installed now being installed on the roof of the new modern by Moore Dry Kiln Co. of Jacksonville, Florida. The fans and heating units shown will be completely enclosed on the roof of the structure.

when completed, will be in charge of Glenn Layton and James Abrams.

All of the Hammond employees are members of the United Construction Workers Union, District 90, U.M.W.A.

Trucker Held After Shearing Off Poles In Ebensburg Boro Drives Away After Rig Fel's High Tension Line

Charges of failure to stop at the scene of an accident were filed Wednesday against a Pittsburgh trucker who fled in his tractor-trailer after it had crashed into a utility pole in Ebensburg last Tuesday night.

He is Ray Hancock, 26, who pleaded guilty at a preliminary hearing before Ebensburg Justice of the Peace Theodore Hanna. Charges were brought by borough Police Chief Theodore Jervis.

Hancock was remanded to the Cambria County Jail in default of \$2,000 bond.

He admitted driving away after his rig knocked down a utility pole carrying high tension wires at the intersection of Routes 22 and 422. Damage was estimated at \$1,000.

Chief Jervis said the accident happened after the trucker's west bound van passed through the town's business district.

The van, loaded with paper, broke off the utility pole. A street light and several high-tension wires crashed into the street, knocking off power to at least a dozen nearby homes. Pennsylvania Electric Company crews worked until 10:30 p. m. to restore electric service.

Wires fell across two parked vehicles, each containing occupants being attended at a nearby service station.

In one car were Mr. and Mrs. Emil Kramp of Ebensburg. Occupants of the other car drove away before they were identified.

Mrs. Kramp later was treated for shock by an Ebensburg physician.

Fire played around the autos for a brief time after the mishap, but the occupants remained inside until a short circuit shut off the power.

Meanwhile, Hancock continued out Route 22 and turned off on a legislative route toward Sun-

Susquehanna Rafting, Logging to Be Commemorated At Cherry Tree

Saturday, Aug. 20, Selected As Date for Official Dedication of Monument Given By R. D. Tonkin

The days of rafting and logging on the Susquehanna River will be recalled and memorialized with appropriate ceremonies in connection with the dedication, on Saturday, Aug. 20, of a monument at Cherry Tree, Pa., in honor of "The Raftmen—The Loggers—Their Mothers and Wives of Penn's Woods."

The event is slated for 2:30 p. m. (DST) in Canoe Place Park at Cherry Tree.

Canoe Place Park, recently created by the Borough of Cherry Tree, includes the famous monument erected in 1884 by the Commonwealth of Pennsylvania to mark a corner of the land purchased by William Penn's sons from the Indians at Fort Stanwix, N. Y., back in 1768.

The 1894 monument marks the site of a large wild cherry tree which was noted as the point of beginning for canoe travel on the West Branch of the Susquehanna.

The Indians, according to tradition, hid their canoes in the vicinity of the cherry tree and traveled overland to Kittanning on the Allegheny River; hence the name Canoe Place Park.

The principal speaker will be Dr. S. K. Stevens, chief state historian.

About 20 "young fellows," veterans of the heyday of river rafting, are expected to be honored platform guests. Others among the guests will be state officials, conservationists, historians and other interested persons. The public is invited to attend.

SUNNY RAINCOATS

New for the high school and college set are attractively trimmed trench coats, water repellent in gabardine, poplin or corduroy—in mention just a few of the available fabrics.

More fashionable than ever, they feature contrast binding at button plackets, collars and cuffs. Often they come with bonnets and umbrellas to match.

More fashionable than ever, they feature contrast binding at button plackets, collars and cuffs. Often they come with bonnets and umbrellas to match.

More fashionable than ever, they feature contrast binding at button plackets, collars and cuffs. Often they come with bonnets and umbrellas to match.

More fashionable than ever, they feature contrast binding at button plackets, collars and cuffs. Often they come with bonnets and umbrellas to match.

More fashionable than ever, they feature contrast binding at button plackets, collars and cuffs. Often they come with bonnets and umbrellas to match.

More fashionable than ever, they feature contrast binding at button plackets, collars and cuffs. Often they come with bonnets and umbrellas to match.

More fashionable than ever, they feature contrast binding at button plackets, collars and cuffs. Often they come with bonnets and umbrellas to match.

More fashionable than ever, they feature contrast binding at button plackets, collars and cuffs. Often they come with bonnets and umbrellas to match.

More fashionable than ever, they feature contrast binding at button plackets, collars and cuffs. Often they come with bonnets and umbrellas to match.

More fashionable than ever, they feature contrast binding at button plackets, collars and cuffs. Often they come with bonnets and umbrellas to match.

More fashionable than ever, they feature contrast binding at button plackets, collars and cuffs. Often they come with bonnets and umbrellas to match.

More fashionable than ever, they feature contrast binding at button plackets, collars and cuffs. Often they come with bonnets and umbrellas to match.

More fashionable than ever, they feature contrast binding at button plackets, collars and cuffs. Often they come with bonnets and umbrellas to match.

Heart Attacks Hit Editor, School Head

Two prominent Johnstown men are in satisfactory conditions in Johnstown hospitals, after being stricken with heart attacks.

They are Dr. Arthur M. Stull, of Menoher Highway, Johnstown R. D. 5, superintendent of Cambria County Schools, and C. W. Dressler, 57, of Menoher Boulevard, associate editor of the Tribune-Democrat.

Dr. Stull, who was stricken on Friday, July 22, is a patient in Merry Hospital.

Mr. Dressler, who is in Memorial Hospital, became ill shortly after noon on Wednesday of last week at his office. He had just driven from Harrisburg.

Press-Courier ads bring you the best results.

4-H CLUB HOLDS SESSION

Members of the Carrolltown 4-H Sew-n-Sew Club discussed the county group's picnic and round-up at a meeting Wednesday. The girls continued working on their clothing projects. It was announced that the first and second-year girls would meet Wednesday of this week at the home of Monica and Mary Ann Ludwig. The next meeting for all girls will be held Aug. 10 at the home of Hilda and Marie Kirsch.

Use our Classified ads weekly.

Does Your Home Need Repairs or Painting?

3 yrs. to pay

1st Natl., Carrolltown

ONE STOP SHOP SAVE!

You Get More for Your Money . . .

When you fill your shopping basket with these high quality food special at the COLVER STORE. At these low, low prices you can check and check everywhere, only to find the best price is here.

YOUR BIGGEST SAVING!

When you shop at COLVER STORE, you not only get low, low prices, but you get an extra big saving, when you save **EASY SAVING PREMIUM STAMPS**. With each dollar you buy in food, you get a 5¢ trade stamp worth 5¢ in merchandise trade.

PORK BUTTS Lb. 43¢ LEAN, MEATY! WHOLE OR HALF	CHIPPED HAM Lb. 69¢ Swift's—the quality kind. for picnics. Chipped thin.	BEEF CHUCK ROAST Swift Select, Whole Blade Cut Lb. 39¢
----------------------------------------------------------------------	-------------------------------------------------------------------------------------------------	----------------------------------------------------------------------------

PURE LARD . . . 2 lbs. 33c	BUTTER By Swift: 1 Lb. It's good! 1 Print 65c
------------------------------------------	-------------------------------------------------------------

FRESH FROM THE Garden Produce Fresh Fruit	Sweet Corn Dozen 39¢ Golden Cross: sweet, fresh, tender ears for roasting or cooking!	BARTLETT PEARS 2 Lbs. 29¢ Large and mellow for eating!	FREESTONE PEACHES 2 Lbs. 29¢ Good size, luscious ripe!
-----------------------------------------------------	-----------------------------------------------------------------------------------------------------------	----------------------------------------------------------------------------	----------------------------------------------------------------------------

LEMONS DOZEN 49c California True-Ripe. You just can't beat that "ole fashion flavor for lemon pies or cool lemonade . . . and it's healthy, too!	CARROTS . . . 2 Bchs. 25c Packed in cello bags for freshness. Slender, uniform size and solid, too! Get several bags today . . . and save!
-----------------------------------------------------------------------------------------------------------------------------------------------------------------------------	-------------------------------------------------------------------------------------------------------------------------------------------------------------

HEINZ Tomato Soup 3 for 35¢	Nabisco Specials! Orzo Sandwich, Devil's Food, Mille Squares, Swiss Creams, Macaroni Sandwich . . . Take your choice, at 2 Packages 75¢	SEMULAC Non-Fat Dry Milk . 93c Family pack — 35 Ounce Makes 6 quarts of milk
----------------------------------------------	-------------------------------------------------------------------------------------------------------------------------------------------------------------	-------------------------------------------------------------------------------------------

DEEP BROWN Libby's Beans 4 24-Ounce Cans 55¢	BELLVIEW PURE GRAPE or Cherry Jelly, 20-oz. 39c 20-oz. Decorated Drinking Glass GIANT SIZE Oxydol or Duz . . . 65c Buy several at this low price!	ROYAL Instant Pudding & Pie Filler 2 for 23c
---------------------------------------------------------------	-----------------------------------------------------------------------------------------------------------------------------------------------------------------------------	---------------------------------------------------------

SILVER BAR Sweet Peas 4 No. 303 Cans Large Size 59¢	LEXARD Toilet Soap . 2 cks. 25c Makes rich, creamy lather—With antiseptic to reduce skin bacteria	FRENCH'S Horse Rd. Mustard, 10c 6-Oz. Jar; makes good food better!
----------------------------------------------------------------------	-------------------------------------------------------------------------------------------------------------	------------------------------------------------------------------------------

DOLLY MADISON Salad Dress'g Quart Jar 49c	FAMOUS GULF TRAK MOTH PROOFER BOMB, 89c A "must" for storing clothes!	TENDERLEAF TEA SPECIAL! Buy one 48-ounce bag for 96c. Get 14 extra for only 1c.
------------------------------------------------------------	---------------------------------------------------------------------------------	-------------------------------------------------------------------------------------------

LIBBY'S Grapefruit & Orange Juice 2 46-Ounce Cans 59¢	KELLOGG'S Variety Pack . . . 37c 16 Assorted Packages WITH FREE SOCKETS BALLOON!	CHASE & SANBORN Instant Coffee, 4 oz. 90c
----------------------------------------------------------------------------	-----------------------------------------------------------------------------------------------	------------------------------------------------------

HERSHEY'S Choc. Syrup 2 16-Ounce Cans 45¢	GAINES DOG FOOD Treat your dog better—give him the best! Reg. 2 for 25c; Less 5c Coupon, 2 for 19c	PETER PAN Peanut Butter jar 59c Made of Golden Roasted Nuts—Has that smooth, mellow flavor!
------------------------------------------------------------	-----------------------------------------------------------------------------------------------------------------	-------------------------------------------------------------------------------------------------------

Visit Our Furniture & Appliance Dept! Get Your Share of

BARGAINS In COLVER STORE'S ANNUAL **FREE GIFTS** Free Bonus Sale

Colver Store Co.

"NORTHERN CAMBRIA'S LARGEST DEPARTMENT STORE"

REESE AVE. COLVER, PA.

PLENTY OF LUMBER HERE

SASH ARE INSTANTLY REMOVABLE

NO TOOLS NEEDED

What a help to homemakers—a window that can be cleaned on both surfaces inside the home. The sash lift out quickly—and no tools are required.

The NEW Andersen PRESSURE SEAL DOUBLE-HUNG WINDOW UNIT

It's the newest window triumph of the nation's leading window manufacturer. Completely new and different . . . based on a revolutionary wedge-like action that requires no weights or balances.

EASY TO INSTALL EASY TO OPERATE

Cuts cost of installation because it's so simple and sash just float to any open position and stay there without rattling.

CONCEALED WEATHERSTRIPPING

Weatherstripping is assured by wedge action of sash against parting stop. Operating parts that create the pressure are out of sight in sash stile.

J. H. Hommer Lumber Co.

PHONE 40-R-2 GLASGOW, PA.