

Hastings Memorial Building Is School, Community Center

(Continued from Page 1)

In addition to fluorescent top lighting, a total of 84 concealed footlights provide illumination for the stage. These are white, blue and amber, and any separate color or any combination of colors may be turned on to provide the desired effects.

A 3x12 movie screen, for use with a new projector, also is a part of the stage. A Baldwin grand piano also has been purchased for the music department.

The third, fourth, fifth and sixth grades of the Hastings-Elder Public Schools took over occupation of the four new classrooms on the first and second floors of the front of the new building following Christmas vacation.

All four of these rooms have natural lighting from the left and rear, with the other walls taken up by blackboard space. New desks and other school furniture also have been installed. These four rooms, as well as the cafeteria area, have asphalt flooring and hard maple trim.

Both the shop and cafeteria sections are approximately 3600 feet in size, with the shop completely equipped for instruction in both metalcraft and woodworking.

One of the most modern innovations in the shop department is the installation of "bus bars" which provide a source of both 110 and 220-volt electric current within easy reach of any machine in the room. They are installed on the ceiling and power is obtained by use of special "plugs" which fit inside them. All safety precautions are provided.

The equipment in the shop section is sure to make the industrial arts course one of the most popular among students of Hastings-Elder High school. It includes:

Three South Bend metal lathes, two 10-inch and one nine-inch; metal drill press, metal shaper, metal milling machine, power hack-saw, electric and acetylene welding equipment, a complete forge, power tool sharpener, two bench grinders, and sheet metal bench with bar folder, slip roll former, squaring shears, combination machine and assortment of stakes.

Wood drill press, wood shaper, six and eight-inch joiners, three wood lathes, 18-inch wood surface with attachments, 12 and 20-inch hand saws, two jig saws, power sander, 12 benches for woodworking, two double metal-working benches, and 20 drawing tables and chairs, plus other accessories.

A special shop paint room is at the rear. This is equipped with special ventilators to carry off the fumes and dust. Sixty lockers for shop students also have been installed in the shop room.

The cafeteria, which will be used mainly for a school lunch program, will have a seating capacity for 200 persons at one time and is expected to go into operation about Feb. 1. It is constructed so as to have two separate entrances from both outside and inside the building.

Food will be prepared in a modern stainless steel kitchen fully equipped with appliances capable of preparing food for hundreds of persons.

Included in this equipment are a large hot-plate type electric stove with double sized eyes, a dishwasher, steam kettle, large pressure-type cooker, large heavy duty mixer and blender, an automatic vegetable peeler, 26-gallon milk dispenser, electric cafeteria serving panel and various cabinets.

A large storage room filled with shelves adjoins the kitchen, and an outside built-in garbage

storage unit will handle waste material until it can be hauled away.

Mrs. Rose Collins of Elder Twp. will serve as chief cook for the school lunch program, with Mrs. Lucy Koval of Hastings as assistant cook.

Under the classroom portion of the new school and community structure are the latest in shower and locker room facilities for both boys and girls—both truly "dream" areas.

The girls' section has 14 shower heads and two dressing rooms, while the boys' portion has 12 showers. Both areas are finished throughout in ceramic tile and have complete lavatory facilities. Coloring of 480 lockers are installed, half in the boys' section and the other half in the portion reserved for girls.

Between the two locker rooms is the emergency lighting plant. Gasoline operated, it will turn on automatically in case of any Penelco power failure.

An International Business Machine automatic fire alarm also is incorporated in the building, as is an intercommunication system with the main high school building, and an IBM bell system.

The new community structure is heated by a coal-fired National boiler and utilizes a steam vapor system. The coal bin has a 50-ton capacity.

Providing the hot water is an oil-fired steam generator, and the automatically heated water is stored in a 2,000-gallon tank. Coloring of the interior is of pastel shades, with cream and green predominating.

Maurice Anna, who has served as janitor of Hastings Schools for many years, will serve as day janitor, and Isadore Furlage will act as night janitor.

The new building will be paid for under a \$20,000 yearly rental from the State School Building Authority, with the state underwriting a portion of this roughly under the reimbursable fraction set-up. At present, Hastings will pay about 30c on the dollar of this rental and Elder Township 15c on the dollar of their share, based on the number of pupils from each district. The rest of the cost will be borne by the state.

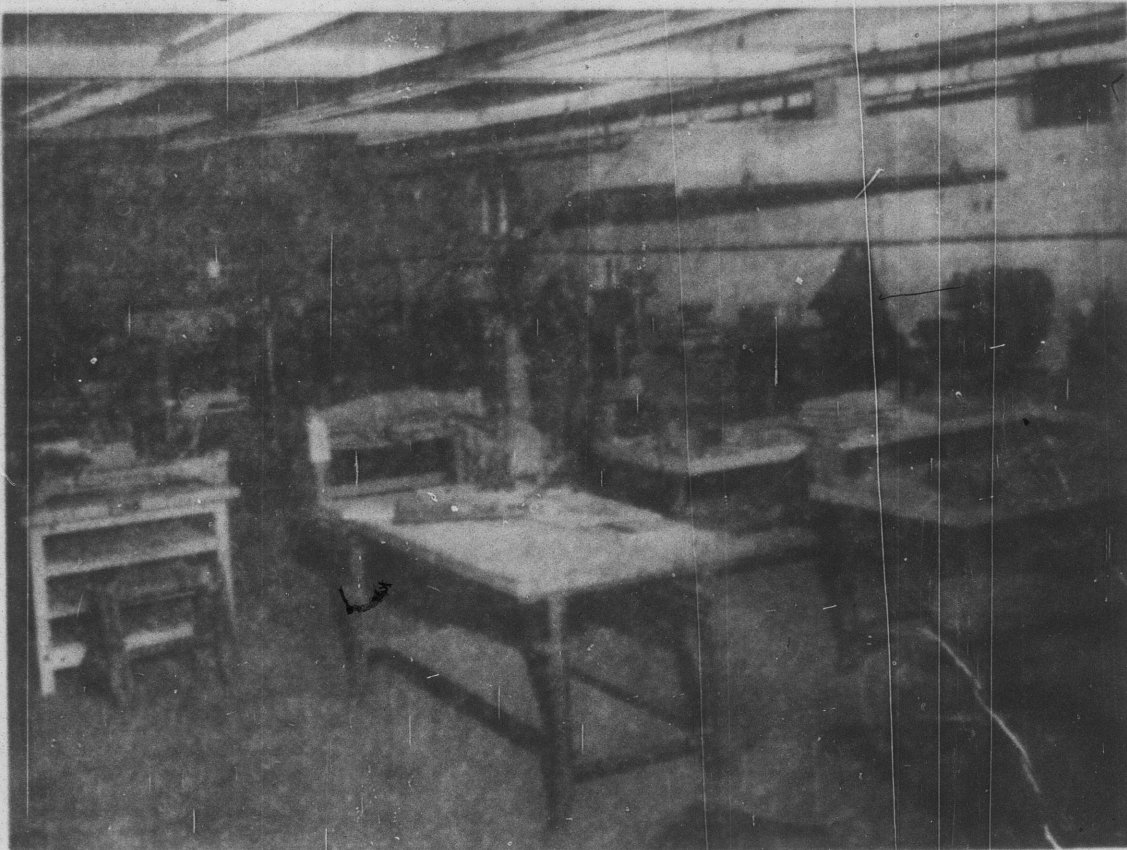
The original Hastings Municipal Authority which started construction of the community building was composed of James McNelis, president; Domenic Demento, vice president; A. F. Baker, Eugene Ender and Robert Hoover, with George A. Clark as secretary, Clair Ulrich as assistant secretary, and D. A. Westover, treasurer. Mr. Clark later resigned as secretary, and upon the death of Mr. Demento, F. W. Veil was appointed to his seat.

Under the Municipal Authority ground was broken for the building on Aug. 15, 1951. The framework of the construction was started and carried to completion by November, 1952. At this point the work was halted temporarily to arrange the financial details necessary for completion.

Up until the temporary recess, approximately \$150,000 in materials and labor had been raised locally. This amount left the Municipal Authority debt free up to this point of construction. The \$150,000 was raised by public subscription and by the donations of various individuals in the town who also pitched in wherever possible with manual labor to help with the construction.

The financial and physical contribution of practically every citizen was a big factor in the final completion. The clubs and businessmen donated both time and

New Hastings-Elder Shop One of Most Complete In District



Some of the complete sets of power tools for both woodworking and metalcraft in the shop section 36x60 feet in size and includes 60 lockers for the new Hastings Memorial Buildings are in Hastings-Elder High industrial arts students.

Lots of Light, Air In New Classrooms Now In Use At Hastings



Light, pleasant and airy—that's the atmosphere in the four classrooms in the new Hastings Community Building. New desks and other school furniture also were purchased. The third through sixth grades have been using the rooms since the end of the Christmas vacation.

money and in every respect were vital factors in the undertaking. So truly, it is a community building erected for the community.

After better than a year's recess the final completion was arranged by the Hastings-Elder Joint School Authority, which consists of B. R. Hindmarsh, president; John O. Miller, vice president; Cyril McMullen, P. O. Holtz and James Commons, with Mr. Ulrich as secretary and Mr. Westover as treasurer. William P. Kelly is solicitor for both groups.

The Municipal Authority donated about \$21,000 worth of the \$50,000 in equipment for the new building. This included the collapsible bleachers, gym mats, kitchen equipment, basketball backboards, auditorium chairs, public address system and the motion picture projector and screen.

Hastings and Elder Twp. can well be proud of their new school and community building, and of those who made its construction possible.

Penelec Planning \$16 Million Worth Of Improvements

Shawville Generating Station Now Complete

To continue expansion of its facilities, Pennsylvania Electric Company will spend \$16,000,000 in 1955, President O. Titus announced last week.

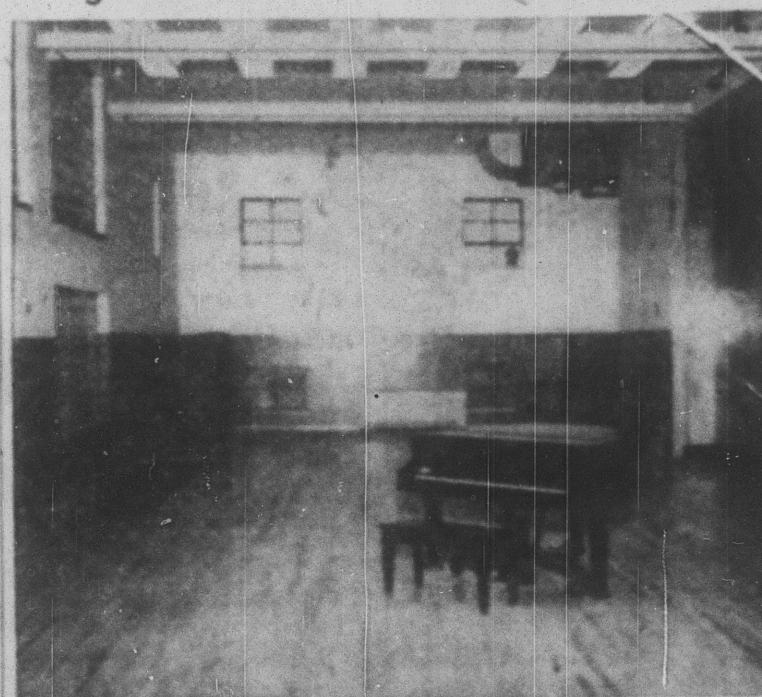
New projects are planned to improve service and provide for future electrical needs in many parts of Penelec's system, Mr. Titus said. He pointed out that the 1955 expenditures will bring to \$189,000,000 the amount spent by the utility for construction for the ten years starting Jan. 1, 1946.

In the Light's Diamond Jubilee year of 1954, the 75th anniversary of Thomas A. Edison's invention of the first practical incandescent lamp, Penelec completed one of the most important projects in its history—Shawville generating station near Clearfield. The big 276,000 kilowatt installation, built at cost of \$40,000,000, increased the company's generating capacity by nearly 50 percent to 840,000 kilowatts.

Penelec sold more electricity to its 340,000 customers in 1954 than in any previous year. An estimated 2,492,000,000 kilowatt hrs. were used, representing an increase of 26,275,000 over the 2,465,725,000 of 1953.

The greatest demand Penelec has ever met came on Monday, Dec. 20, 1954, between 5 and 6 p. m. when 689,000 kilowatt hours were generated. To supply Penelec customers, 587,700 kilowatt

Stage Converts Into 30x70 Music Room



The 30x70-foot stage for the auditorium at the new Hastings community serves a double purpose when eight sliding doors close it off from the main room. In addition to being the largest and best-lighted stage in this section of the state, it also serves as a music room for the high school. The piano is a Baldwin grand.

hours were generated. The comparable figure for the peak hour of 1953 was 535,000. An additional 102,000 kilowatt hours were generated for sale to other utilities during the 1954 peak. A new high for a 24-hour period was set on Dec. 21 when 10,673,700 kilowatt hours were sold to Penelec customers.

Major projects completed in 1954 included a new division service center in Erie which cost \$2,200,000; energizing of the entire 87-mile length of a 230,000-volt, 84,100,000 transmission line from Shawville to Montebello, Pa., linking Penelec with other electric companies to the east for the interchange of electricity; and a 115,000-volt line from Farmers Valley substation in McKean Co. to North Pennsylvania Power Company's Sabinsville substation in Tioga Co., enabling Penelec to serve part of the needs of North Penn Power.

An application is pending before the Securities and Exchange Commission to merge North Penn Power into Penelec. Both companies are subsidiaries of General Public Utilities Corp.

In 1955, Penelec will continue work on 115,000-volt transmission lines running from Gettysburg to Hooversville to provide another source of power for the area south of Johnstown and from Philipsburg to Westfall to supply additional power to the Altoona area. Rebuilding of a 115,000-volt

YOU'RE INVITED! COME TO BLATCHFORD'S NEW YEAR MARK DOWN CLEARANCE SALE

We're Sweeping Out Our Entire "54" Overstock At The

LOWEST PRICES EVER OFFERED

SAVE 25% to 50% NOW

LIVING ROOM SUITES

- Reg. \$199.95. 2-Pc. Damask Suite... **\$159.88**
- Reg. \$249.95. 2-Pc. Frieze Suite... **\$199.88**
- Reg. \$189.95. 3-Pc. Maple Sofa Bed Suites **\$169.88**
- Reg. \$299.95. 2-Pc. Sectional Suite... **\$248.66**

BEDROOM SUITES

- Reg. \$119.95. 3-Pc. Colonial Maple Suites... **\$78.66**
- Reg. \$189.95. 3-Pc. Modern Blond Suites... **\$138.88**
- Reg. \$249.95. 3-Pc. Mahogany Suites... **\$198.66**
- Reg. \$169.95. 3-Pc. Grey Bookcase Suites... **\$119.88**

DINING ROOM SUITES

- Reg. \$249.95. 7-Pc. Walnut Modern Dinette **\$189.88**
- Reg. \$289.95. 7-Pc. Blonde Mahogany Suite **\$248.66**
- Reg. \$689.95. 18th Century Mahogany. 9-Pc. Suites... **\$588.66**

DINETTE SETS

- Reg. \$89.95. 5-Pc. Chrome Dinettes... **\$68.66**
- Reg. \$119.95. 5-Pc. Wrought Iron Dinette... **\$89.88**
- Reg. \$169.95. 7-Pc. Modern Dinettes **\$148.88**

DOUBLE DUTY SOFAS

- Reg. \$59.95. Modern Day-Nite Lounges... **\$39.88**
- Reg. \$79.95. Lawson Sofa Beds... **\$59.88**
- Reg. \$189.95. 5-Pc. Sleep 3 Sofa Suite... **\$148.88**
- Reg. \$189.95. Modern Tapestry Hidebeds... **\$148.66**

BEDDING

- Reg. \$19.95. Cotton Mattress... **\$10.00**
- Reg. \$49.95. Hotel Style. Innerspring Mattress... **\$34.88**
- Reg. \$59.95. Orthopedic Mattress... **\$49.88**
- Reg. \$59.95. Serta. Ease Posture Mattress... **\$39.95**

FLOOR COVERINGS

- Reg. \$39.95. 9x12 Cotton Loop Rugs... **\$28.66**
- Reg. \$59.95. 9x12 Oriental Rugs... **\$39.88**
- Reg. \$69.95. 9x12 Axminster Rugs... **\$59.66**

CHAIRS

- Reg. \$12.95. TV Cocktail Chairs... **\$9.88**
- Reg. \$39.95. Platform Rockers... **\$22.88**
- Reg. \$89.95. Lounge Chairs... **\$69.88**
- Reg. \$69.95. Swivel Rockers... **\$59.88**

SAMPLE RUGS

\$5.00 \$10.00 \$15.00

- TABLES** From \$9.88 Values to \$24.95
- LAMPS** From \$6.88 Values to \$19.95
- CEDAR CHESTS** From \$49.95 Lane, Cavalier

3 ROOM OUTFIT SPECIAL

AS SEEN ON TELEVISION TONIGHT WFBG-TV 5:55 P. M.

- 7-Piece Living Room Ensemble** Including Tables, Lamps, 2-Pc. Suite
 - 9-Piece Bedroom Group** Including Mattress, Springs, Pillows, Lamps, 3-Pc. Suite
 - 25-Piece Kitchen Group** Including 5-Pc. Dinette, Rug, Cabinet, 18-Pc. Dinner Set
- Can Be Purchased Separately
- # \$648.66
- COMPLETE

FREE! With the purchase of 3 rooms—Your choice of REFRIGERATOR, WASHER or RANGE.



PHILA. AVE. BARNESBORO

JANUARY SPECIAL!

Parakeets



... make such interesting pets!
... they're very easy to care for!

2.98 each

Brilliantly colored miniature parrot-like birds that are remarkably hardy and healthy... as easy to care for as canaries. They are unusually interesting and easily tamed... they'll make lovable pets that your whole family will enjoy. Many can be taught to talk.

MALE SINGING CANARIES... **2.77**

G. C. Murphy Co.

PHILA. AVE. BARNESBORO