

Table with 2 columns: Description and Amount. Includes 'Total real estate taxes outstanding at end of 1950' and 'Outstanding on previous duplicates'.

Table with 2 columns: Description and Amount. Includes 'Decedents' personal property' and 'Total personal property taxes outstanding at end of 1950'.

SCHEDULE D: DETAILED STATEMENT OF INDEBTEDNESS. Table with 5 columns: Title or purpose of debt, Gross debt outstanding at beginning of year, Amount incurred during year, Gross debt outstanding at end of year, Deductible balance in sinking fund, Net debt at end of year.

SCHEDULE E: AGENCY FUND TRANSACTIONS. Table with 2 columns: Description and Amount. Includes 'RECEIPTS' and 'EXPENDITURES'.

Table with 2 columns: Description and Amount. Includes 'Total receivable (real estate)', 'Total limit', and 'Total remaining capacity'.

Table with 2 columns: Description and Amount. Includes 'Total receivable (real estate)', 'Total limit', and 'Total remaining capacity'.

FINANCIAL REPORT: RETURNED TAXES AND TAXES ON UNSEATED LANDS. Table with 2 columns: Description and Amount. Includes 'BALANCE AT BEGINNING OF YEAR' and 'TOTAL RECEIPTS AND BALANCE'.

Table with 2 columns: Description and Amount. Includes 'Total county children's home (administration)' and 'Total farm expenditures'.

SCHEDULE A: SUMMARY STATEMENT OF RECEIPTS AND EXPENDITURES. Table with 2 columns: Description and Amount. Includes 'BALANCE AT BEGINNING OF YEAR' and 'GRAND TOTAL RECEIPTS AND BALANCE'.

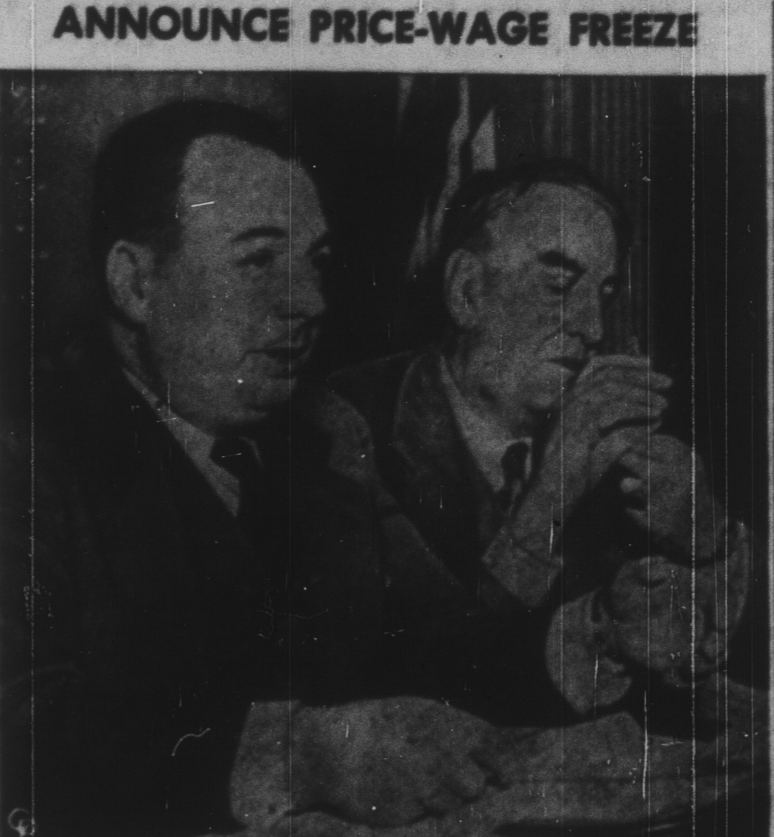
Table with 2 columns: Description and Amount. Includes 'Total services and travel' and 'Total capital outlay'.

SCHEDULE B: DETAILED STATEMENT OF EXPENDITURES. Table with 2 columns: Description and Amount. Includes 'General administration' and 'Total expenditures'.

Table with 2 columns: Description and Amount. Includes 'Total capital outlay (adults)' and 'Total capital outlay (children)'.

Table with 2 columns: Description and Amount. Includes 'Total expenditures' and 'GRAND TOTAL EXPENDITURES AND BALANCE'.

Table with 2 columns: Description and Amount. Includes 'Total expenditures' and 'GRAND TOTAL EXPENDITURES AND BALANCE'.



PRICE DIRECTOR Michael V. DeBalle (left) and Wage Stettiner Cyrus Ching announce at a joint news conference in Washington that the Government has "broken" prices and wages in an effort to check inflation.

TELEVISION SCHEDULE WJAC-TV—Channel 13 Johnstown, Pa.

Table with 2 columns: Time and Program Name. Lists programs for Thursday, Friday, Saturday, and Sunday.

VIDEO TOPICS

Spike Jones, the musical madman, will make his debut on TV this coming Sunday, Feb. 11, on the Colgate Comedy Hour at 8 p. m. over WJAC-TV.

BEAVER VALLEY 4-H Home Extension Club Meets At Each Home

The Beaver Valley 4-H Club meeting was held last Thursday, Jan. 25, under the direction of Mrs. Pearl Beck.

FUNERAL SERVICES HELD Funeral services were held for John L. Shope of this place last Wednesday, Jan. 31 in the Beaver Valley MUB Church.

GLASGOW Mrs. James McCarty and Mrs. James Bowman were visitors in Coalport Tuesday afternoon.

Mrs. Julia Reynolds is a patient at the Altoona Hospital. Mr. and Mrs. William Nelson of Flinton visited at the Harvey Davis home last Thursday.

Mrs. Laura Peterson is a patient at the Philadelphia State Hospital. Her many friends wish her a speedy recovery.

Carrolltown High Book Staff Visits Courier Office Four members of the staff of the Carrolltown High School yearbook, "The Mountaineer," Tuesday of this week spent the afternoon going through material in the Union Free-Courier morgue.

Walter Hellen of Ashville was buried at the Pleasant Hill Cemetery Friday afternoon.

Rea McCarty spent Sunday at the Charles Dixon home in Coalport.

Until its incorporation in 1786 Uniontown was known simply as 'Dixon'.

COATS and SUITS That predict a Fashionable Spring and Easter. Includes an image of a woman in a coat and a small illustration of a child.

SCOTT'S SCRAP BOOK By R. I. SCOTT. Includes an illustration of a child and text about the book's features.

VALENTINE DAY WEDNESDAY, FEB. 14. LIPMAN'S for "FASHION FIRSTS" BARNESBORO. Includes an illustration of a woman's face.