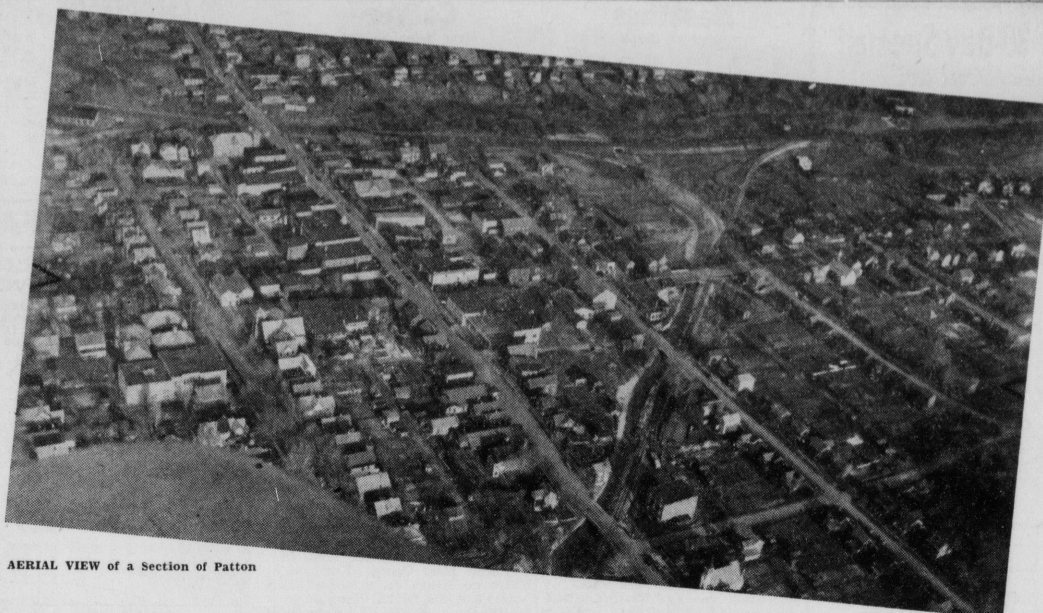


3, 1948
the train
Altoona.
No. 6
-year-old
s treated
Spang-
Thursday
s to his
at work
Sterling

PENNSYLVANIA WEEK --- SEPT. 26 to OCT. 3

IT'S YOUR PATTON ... KEEP IT GROWING!



AERIAL VIEW of a Section of Patton

IT'S YOUR PATTON—KEEP IT GROWING! This is the theme of our community's observance of Pennsylvania Week, September 26th to Oct. 3rd. Situated in a healthful climate, high in the Allegheny Mountains, Patton is a community of which we all are proud; good homes, churches, streets, business places, excellent recreational facilities, modern farms, up-to-date manufacturing plants, good hunting and good fishing, all combined in an area which boasts of some of the most beautiful scenery in the State of Pennsylvania . . . It's Your Patton . . . A good place to work—to live—to play—Keep It Growing!



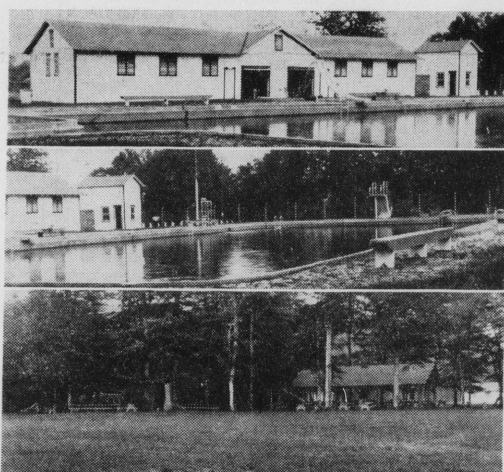
PATTON'S NEWEST INDUSTRY—Interior views of the new plant completed in 1947 for Phillips-Jones Corporation, manufacturers of the famous Van Heusen products, containing 32,000 sq. ft. of floor space. Erected by the Patton Municipal Authority by bonds subscribed to by citizens of the community it is one of the most modern of its type in the United States. Employing 260 persons with an annual payroll of \$400,000.00, it is a prime example of what can be done when people are working together to build a bigger and better town.



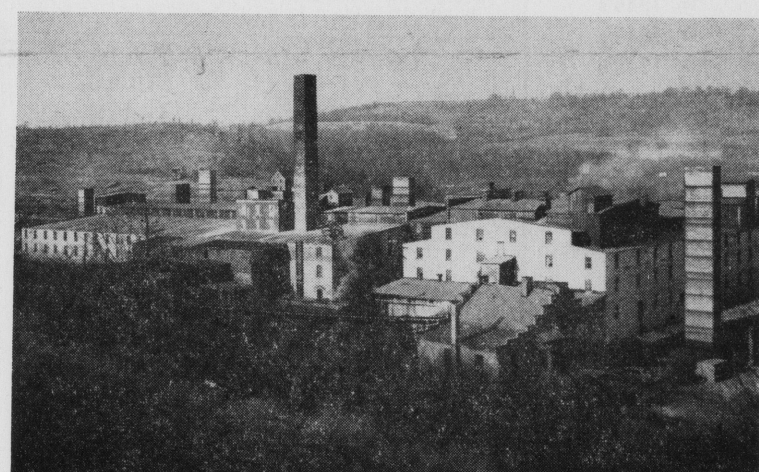
ON MAGEE AVE., LOOKING EAST—Business is looking up! Community minded, aggressive merchants have "dressed-up" their premises, are offering quality goods at prices that are competitive. It is expected new type lighting will be installed soon. It's Your Main Street—Your Merchant—Your Community—Keep It Growing!



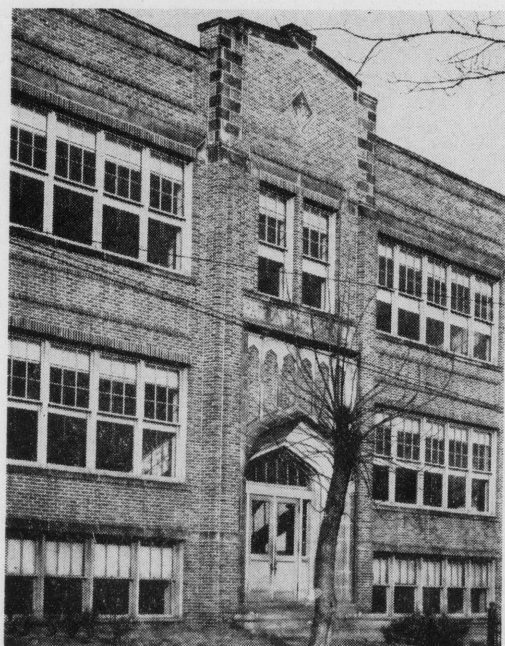
CENTURY RIBBON MILL—"The 'old timers' done it, too!" Erected in Patton in 1902, the plant has since had an addition which totals 23,000 sq. ft. of floor space. Using modern machinery, with an average of 75 skilled employes and an annual payroll of \$150,000, the company processes rayon, silk and nylon for the weaving and knitting trades. In good times and bad, the Century Ribbon Mill is a REAL asset to our community.



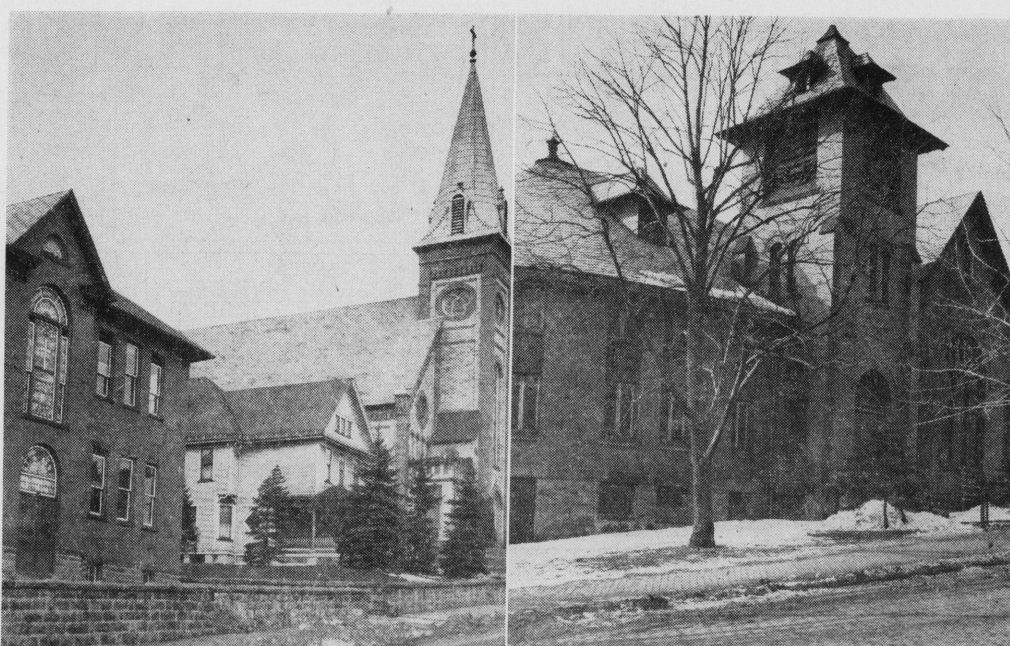
PATTON RECREATION PARK—Noted as the finest in Cambria Co. Community owned and operated by the Patton Recreation Commission, the Park has a fine concrete pool, shelters, playground, picnic facilities, etc. It is the scene of many happy gatherings throughout the summer.



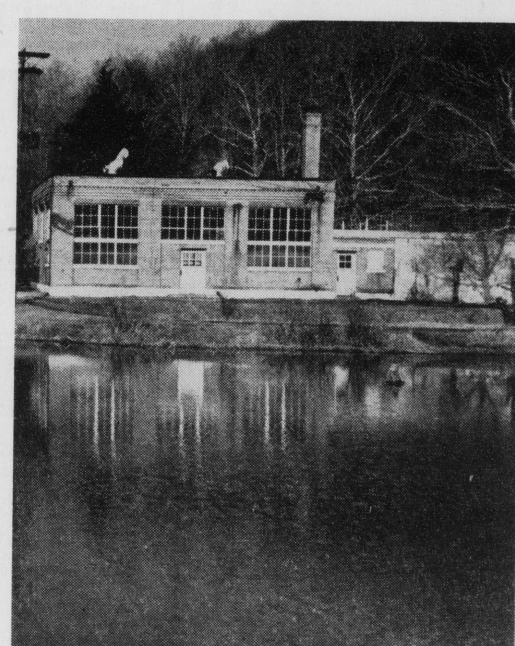
PATTON CLAY MANUFACTURING CO.—A local concern incorporated on Oct. 25, 1895, operating its own coal and clay mines as well as a gigantic plant covering 170,000 sq. ft. of floor space. Manufacturing sewer pipe, brick, drain tile, as well as other ceramic products, employing 205 men with an annual payroll of approximately \$500,000.00. Leaders in the field, products are shipped throughout the United States and to South America, Canada.



PATTON HIGH SCHOOL—A part of Patton's educational facilities. Space to meet needs of a growing community is afforded by 2 grade schools and a parochial school. Commercial, academic, agricultural courses offer in addition instrumental music, shop, physical instruction and home economics.



A COMMUNITY OF MANY CHURCHES—It's an old saying that a church-going community is a good community. Patton is proud of its churches; throughout the town one can see well-kept edifices of worship. Shown are St. Mary's Roman Catholic Church, School and Convent, and the Trinity Methodist Church; others are St. George's Roman Catholic, SS. Peter & Paul's Greek Catholic, SS. Peter & Paul's Russian Orthodox, Hebron Lutheran, Presbyterian, First Baptist, Trinity Episcopal and Church of God. Your church welcomes you.



FILTRATION PLANT—Owned and operated by Borough of Patton, it was built in 1924 at a cost of \$127,000, it is located along an abundant water source—Chest Creek. Unpolluted, fed by many mountain streams. Capacity of system is 1,440,000 gallons per day. Good water is a real asset to Patton.

Published by Progressive Concerns of Patton in the Interests of a Bigger and Better Community. KEEP IT GROWING!