

'FRIEND SHIP' SAILS FOR FRANCE



HERE IS A GENERAL VIEW of the ceremonies in Philadelphia marking the sailing of the "Friend Ship," loaded with food supplies for France. The foodstuffs, donated by men, women and children from coast to coast, were brought to Philadelphia by the "Friendship Train." (International)

Giant New Telescope May Solve Riddle of Life on Mars

200-inch 'Eye' Soon To Be Ready for Use

Existence of intelligent life on Mars may finally be proved by Mt. Palomar's 200-inch "big eye," California Institute of Technology astronomers predict. This is one of many of man's age-old questions about the universe which may be answered when the world's largest telescope—really a giant camera—peer a billion light years into uncharted space. But it probably will raise more new problems than it will solve. The 200-inch mirror, trucked 160 miles southeast from Pasadena, Cal., to its lonely mountain home a couple of weeks ago, will gather more light—and hence reach out a greater distance—than ever before. It will provide enough light for the first snapshot of Mars, which should be sharp enough to show the famous "canals" clearly if they exist. Previous time exposures have been marred by shimmer to prevent solution of one of nature's most tantalizing problems. If the canals show up on a photo, astronomers believe their existence would indicate intelligent life exists or has existed on the planet. The 200-inch telescope will be used mostly to view more distant space, however. The world's largest precision instrument may confirm or repudiate the theory that distant nebulae are receding from the earth at great speed, and hence that the entire universe is expanding. This is indicated by spectra studies with the 100-inch Mt. Wilson telescope, largest at present. The 200-inch, gathering light from twice as far, should either confirm the theory or indi-

cate that the phenomenon is due to some natural principle so far unknown and may also show if the universe is infinite or limited. Increased light gathered by the earthquake-proof "big eye" will allow the spectra, or color patterns of stars and nebulae to be studied in much greater detail, to determine relative abundance of chemical elements on those far-off worlds. This may uncover new elements unknown on earth, or it may shed light on such fundamental problems as the source of stellar energy and the origin of elements. These will probably be among the first problems tackled when exhaustive tests are finally completed and the telescope goes into operation—probably next summer—but Cal-Tech stresses that they will be only a beginning. As the curtain of darkness is pushed back, new and greater problems, now unforeseen, will doubtless emerge.

Nanty-Glo Council Votes Pay Hike for Employes

Nanty Glo Borough Council at a special meeting held last Tuesday evening, voted \$10-per-month increases for salaried employes and 10 cents per hour for day workers. Salary of the street and water commissioner was hiked from \$228 to \$238 per month while the wages of policemen were increased from \$180 to \$190 per month. The borough clerk's monthly salary was increased from \$85 to \$90 and the janitor in the borough building was voted a monthly salary of \$125.00. Wages for the day workers were increased from 85 to 95 cents per hour.

Movement on Foot To Curb Liquor Sale Hours in Club's Here

State Liquor Dealers to Present Bill to Assembly

A move to force clubs to close at the same hour as other licensed liquor establishments will be made at the next session of the General Assembly. Clubs now may operate until 3 a. m. seven days a week. Other places must close at 2 a. m. on week days and midnight on Saturdays. Sentiment for a uniform closing hour was overwhelming at a recent convention of the Pennsylvania Liquor Dealers' Association in Pittsburgh. Several members—operators of restaurants, hotels and taverns—made it clear that a bill will be introduced at the next session to put clubs on a parity with other places. It also was learned that an attempt will be made to advance the closing hours of all establishments to 1 a. m. week days and 12 midnight Saturdays. This plan was said to have the support of some licensees, who feel that business in the hour between 1 and 2 a. m. consists, to a large degree, of "drunks" who shouldn't be sold drinks anyway. He said the assistance grants of a number of former miners have been reduced after investigation disclosed the fact that the recipients were also receiving up to \$50 a month in the U. M. W. welfare fund benefits. All of the cases found have been in the soft coal areas, the official explaining that supplemental grants have not been made as yet by the welfare fund set up for anthracite miners, although it is under consideration. Under the state policy, a per-

Miners' Welfare Fund to Cut Pennsylvania Relief Grants

All Resources of Relief Applicants Considered

Harrisburg — The State Department of Public Assistance is deducting from relief grants aid received by needy soft coal miners from the welfare fund of the United Mine Workers of America when it exceeds standards established by the commonwealth for different categories of grants. Frank A. Robbins, Jr., assistant secretary, said there has been no change in the department's long-standing policy of taking into consideration all the resources of applicants for relief in determining the size of benefits and none is contemplated at present. Robbins made the comment in connection with an announcement by the Federal Social Security Board in Washington that it will not bar outside agencies, such as the U. M. W. welfare fund, from making supplementary grants to persons receiving social security. A public assistance department official disclosed there have been several conferences with representatives of the U. M. W. welfare fund set up for soft coal regions in a union effort to have the commonwealth adopt the same policy "but there has been no change made so far." He said the assistance grants of a number of former miners have been reduced after investigation disclosed the fact that the recipients were also receiving up to \$50 a month in the U. M. W. welfare fund benefits. All of the cases found have been in the soft coal areas, the official explaining that supplemental grants have not been made as yet by the welfare fund set up for anthracite miners, although it is under consideration. Under the state policy, a per-

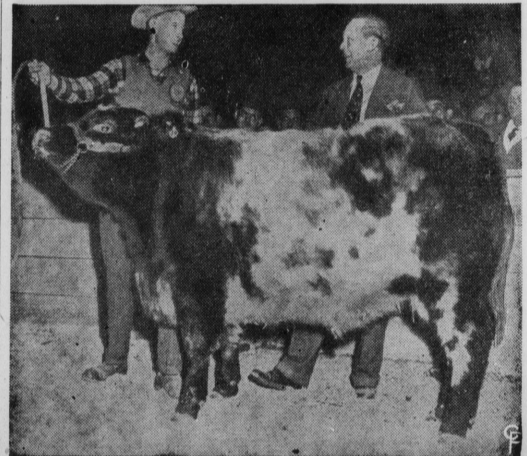
Ready for Christmas

There's no need to puzzle over a gift for the women on your list! Whether you're shopping for your 'teen-age sister, or your Great Aunt Sarah, we have the gift that's sure to please!

Advertisement for Mademoiselle Shop featuring various gift categories: Lingerie, Blouses, Skirts, Handbags, Costume Jewelry, Robes, Mittens, Gloves, Umbrellas, Scarfs, Perfumes, Hosiery, Dresses, Handkerchiefs. Includes illustrations of clothing and accessories.

OPEN EVENINGS 'TILL CHRISTMAS! Mademoiselle Shop Magee Ave. Patton, Pa.

CHAMP STEER AT LIVESTOCK SHOW



AT THE INTERNATIONAL LIVESTOCK Exposition in Chicago, Judge Richard S. Dequincey (right) of Bodenham, England, congratulates Claude Millwee, 18, Fort Cobb, Okla., whose steer, "Big Boy," won the Junior Grand Champion Ribbon. Dequincey is a breeder of Herefords in England. The champ steer was weighed in at 1,100 pounds. (International Soundphoto)

Thyroid Extract Saves Many Babies

Many of the women who lose their babies prematurely may be helped to give birth to living infants by small daily doses of thyroid extract. Studies showing this were reported by Dr. Eleanor Delfs of the Johns Hopkins School of Medicine to the Southern Medical Association at Baltimore. In 31 of 45 patients she studied, a deficiency of thyroid hormone was found. Deficiencies of a sex hormone and of Vitamin E occurred in a few of the cases. The thyroid extract should be given strating three to four months before the woman undertakes to have a child and should be continued during the pregnancy. Failure to start the hormone treatment early enough probably accounts for disappointments in some cases in which it has been used in the past. In addition to the hormone treatment, vigorous sports, strenuous activity and hard work are banned throughout pregnancy for these patients. Sedentary work and ordinary household duties are permitted, but the women are warned to avoid getting ever-tired. Of 39 patients who had previously had 155 pregnancies, only 12 bore living babies. These same women, after study and treatment, have borne 29 living infants in 43 pregnancies.

Christmas Lights In Short Supply

Christmas trees will shine a little more brightly this year won't reach their peak brilliance for several Yuletides to come, handlers of holiday lighting bulbs say. One large electrical supply house reported the supply was about ten per cent better than last year, but that ten times the supply would be needed to meet the demand. The General Electric Co., a major producer, said all its facilities were at capacity and an additional factory had been acquired to make nothing but Christmas tree lamps. P. D. Parker, general sales manager for GE's lamp division, said that "although the output will be the largest in our history, it will be several years before we can fill all the back orders." Parker cited three reasons for the shortage. First, he said, a backlog of demand built up over the four war years when no holiday bulbs were made; second, the many new families setting up homes, and last, lack of imported lamps, formerly 15 to 100 million annually.

Clarke New Head Of Hope Fire Co.

J. Henry Clarke was elected president of the Hope Fire Company at Barnesboro for his second term last week. Stanley Ulrich was named first vice president. F. A. Glasser was reelected secretary. He has served in this office for 16 years. J. Dean Whited was named fire chief for his 24th term. R. H. Steele was reelected treasurer for his ninth term. Other officers are Morris Tibbitt, foreman; J. M. Davis, first assistant foreman; Ralph Brank, second assistant foreman; William E. Byrnes, engineer, and Paul J. Waters, trustee for a five year term. It was disclosed that the recent drive for funds was successful. The fire company will buy a fully equipped emergency truck with the money. —It takes more than things to make people happy.

FOR A MERRY CHRISTMAS MORN'

All the toys a little girl wants . . . All the toys a little boy wants . . . And toys for baby, too! Yes, you'll enjoy a merry, merry Christmas under the tree if you choose from Bacha's fine selection of toys and wheel goods that is the best ever! Why not shop at Bacha's? You'll find a gift with which to say Merry Christmas to anyone on your gift list.



BACHA'S HARDWARE WILL BE OPEN EVERY EVENING UNTIL CHRISTMAS, BEGINNING DEC. 12 BACHA'S TOY TOWN "Where You See & Hear Santa" BARNESBORO, PA.

Do You Need Some Money for Christmas? Perhaps you want to pay cash for some gifts, to the wife, to the children, to friends. Maybe you want to buy some appliance for your home for Christmas! Let us lend you the money to buy for cash, then repay the loan in easy monthly payments. The cost is low. COME IN TOMORROW . . . AND SEE US ABOUT A LOAN First National Bank Carrolltown, Penna.