

FARM CALENDAR

Timely Reminders from The Pennsylvania State College School of Agriculture

Reduce Harvest Accidents Careful handling of machinery and equipment during the harvest season is urged by John Haswell, extension agricultural engineer of Penn State...

Rotenone Curbs Insects Rotenone dust of one-half to three-fourths percent strength is recommended for control of Mexican bean beetles and flea beetles...

Contour Strips Saved Fields Observations in Northern Cambria County show that farmers who used contour strip farming methods this spring did not suffer from erosion nearly as much during the recent cloudbursts as did those who did not use this method.

Spray Tomato Plants Prevalence of blight among tomato plants, particularly those shipped from the South, prompts the recommendation by extension plant pathologists of Penn State College to spray these plants with a fixed copper spray or 6-3-10 Bordeaux.

Fields Need Replanting Many fields flooded recently will need to be replanted, reports J. B. Dickey, extension agronomist at Penn State. He suggests short-season corn, buckwheat, soybeans, or perhaps sudan grass or millet.

Apples Need Sprays Extension entomologists and plant pathologists remind that all apple trees need thorough spray coverage at this time to protect trees and fruit from insects and diseases.

Cut Hay at Full Bloom Since most legumes and grasses at full-bloom give maximum yield in protein and tonnage per acre, that is the time to cut for highest quality hay. After the full-bloom stage the protein content, palatability and digestibility go down rapidly.

Peach Trees Need Nitrogen Reminding that peach trees need to develop vigorous growth of wood on which to grow next year's crop as well as produce this year's peaches, fruit specialists recom-

mend a second light application of nitrogen fertilizer, especially if the early spring fertilizer applications were light or washed away

Shear Christmas Trees Christmas trees, both spruces and pines, often require shearing to correct deformed or extra-vigorous growth. This work should be done between June 15 and July 15.

Hogs Need Water, Shade A thatched platform on posts and about four feet from the ground in the hog lot gives these animals cool shade on hot summer days. Hogs also should be given ample water.

Check Legume Infection Where bacterial and fungus diseases attack clover and alfalfa, prompt cutting is urged by extension plant pathologists to remove the infection and aid the second growth.

SERVICE PAY HIKES HAVE WIDE RANGE Here are the pay increases approved by the Senate-House conference committee along with the draft law extension. They have a wide range of from a 50 percent hike for a private to 10 percent for generals and admirals.

Private and apprentice seaman, from \$50 to \$75. Private 1st class, seaman 2nd class, from \$54 to \$80. Corporal and seaman 1st class, from \$66 to \$90.

Sergeant, 3rd class petty officer, from \$78 to \$100. Staff sergeant and 2nd class petty officer, from \$96 to \$115. Tech sergeant, 1st class petty officer, from \$114 to \$135.

Master sergeant, chief petty officer, from \$138 to \$165. Warrant officers, three lowest grades, from \$150 to \$180; from \$162.50 to \$195; from \$175 to \$210.

Two top grades, from \$200 to \$220; from \$220 to \$275. Officers' Pay Also Raised 2nd lieutenant, ensign, from \$150 to \$180.

1st lieutenant, lieutenant junior grade, from \$168.67 to \$200. Captain, lieutenant, from \$200 to \$230.

Major, lieutenant - commander, from \$250 to \$275. Lt.-colonel, commander, from \$291.67 to \$320.84.

Brig.-gen., rear admiral, lower half, from \$500 to \$550. Maj.-gen., lt.-gen. and general, rear admiral, upper half, vice admiral and admiral, from \$667.67 to \$733.33.

YOUR Health

There were not any human "guinea pigs" at Operation Crossroad at Bikini Atol in the Pacific. Medical science has full knowledge of what happens to humans in the vicinity of an atom bomb explosion.

Those persons who are in the immediate vicinity disintegrate—disappear as it were, leaving no trace.

A member of the Army Medical Corps studied 21 patients suffering delayed symptoms following the bombings at Hiroshima and Nagasaki.

Some of the patients studied were as far as two and a half miles from the center of the explosion. Delayed symptoms included the destruction or suppression of the blood-forming system, with disturbance of the liver function.

There was a generalized disturbance of the entire body function, chiefly in the blood-forming system. There was reduction of white corpuscles in the blood.

There was decrease in the number of blood platelets, which are thought to be factors in the clotting of blood.

Increased clotting time and a tendency to hemorrhage resulted in anemia, fever and weakness. There was loss of appetite, loss of hair, nausea, vomiting, dizziness and extreme fatigue.

The general effect on the liver caused jaundice and fever. These 21 patients did not include persons receiving severe blast injuries or extensive external burns.

The atom bomb is an awesome instrument of destruction. More people are living longer to die eventually of heart disease. This is especially true of coronary thrombosis.

Formation of a blood clot in one of the arteries that supply blood to the heart muscle results in coronary thrombosis.

When even a portion of the heart muscle is deprived of blood for a length of time, damage results. The seriousness of the occurrence depends on the size and the location of the branch blood vessel obstructed by the clot.

Acute pain is present because some part of the heart is deprived of its necessary blood supply. The older a patient when coronary thrombosis strikes, the less the chance for survival.

Factors unfavorable to recovery in coronary thrombosis include advanced age, excessive weight and previous attacks.

The individual most susceptible to coronary thrombosis is the business man of executive type or the man engaged in business demanding excessive individual effort.

Those who work hard and lead irregular lives are especially vulnerable to this disease. There are persons, too, whose blood has a greater tendency to clot than others.

Careful prolonged treatment of the sufferer from coronary thrombosis is essential.

HUGE SUMS SPENT FOR MINE SAFETY INTEREST IN PAST TWENTY YEARS

More than 100 different safety devices, machines and methods have been introduced into the coal mines in the past 20 years at a cost exceeding \$100,000,000, which is credited by Bituminous Coal Institute with reducing accidents by nearly one-half during this period.

A widespread change from the use of black powder and dynamite in blasting the coal loose from its seam to the use of permissible modified explosives producing reduced flames and reduced temperatures is said to have diminished one of the major hazards of mining by more than 50 per cent.

Coal miners are the largest peacetime users of explosives and some 180 different permissible brands of a safety standard approved by the Bureau of Mines are used now.

Though many miners objected to the original change in the use from oil or carbide to electric safety lamps made mandatory by safety-minded coal men and to the compulsory introduction of hard hats, hard-toed shoes, safety belts and safety aprurtenances, the general use of these is said to have avoided many thousands of accidents.

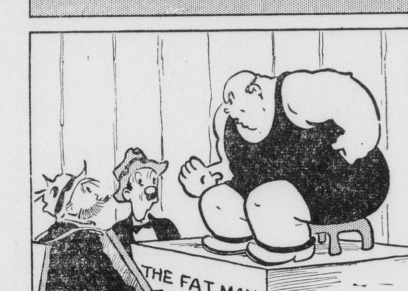
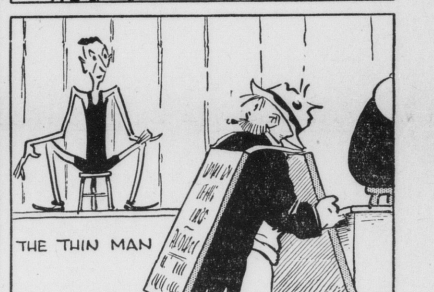
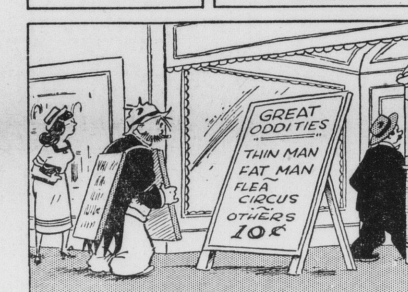
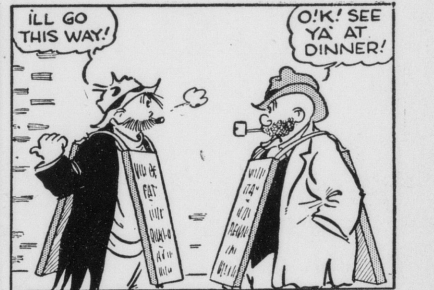
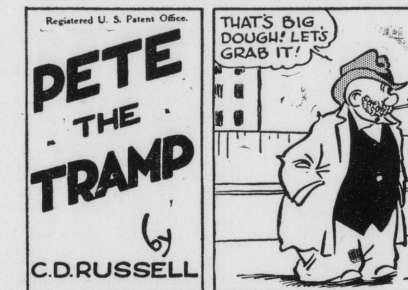
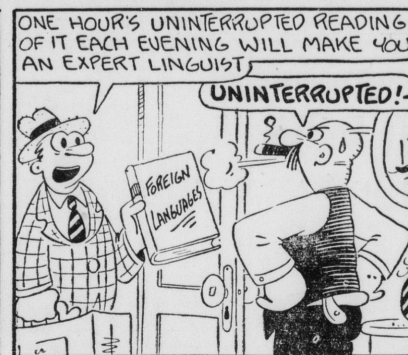
Over 20 new automatic signals, alarms and gauges are stated to be in use now to mechanically record water pressures, detect the presence of gases, break electrical circuits and otherwise afford instant protection from operating hazards.

Prevention or spread of underground fires has been decreased sharply by the extensive use of calcium chloride in the allying accumulations of coal dust, by fireproofing ventilation guides, housings for electrical equipment, shaft lines, mine entrances, overcasts and the erection of fireproof doors in the mines.

FARM LABOR OFFICE OPEN FOR HARVEST H. C. McWilliams, county farm agent, has announced that farm labor placements for the coming harvest season will be handled through the Agricultural Extension Office in the Ebensburg Courthouse.

He urges farmers who need help for harvesting or other farm operations and who can utilize partially-trained boys of high school age to contact him at once. McWilliams states that trained farm help is still about as difficult to obtain as it was during the war years, but that a number of boys are willing to work on farms during the summer months.

THE FLOP FAMILY



PRIVATE LIFE OF BUCK



YOUR Health

There were not any human "guinea pigs" at Operation Crossroad at Bikini Atol in the Pacific. Medical science has full knowledge of what happens to humans in the vicinity of an atom bomb explosion.

Those persons who are in the immediate vicinity disintegrate—disappear as it were, leaving no trace.

A member of the Army Medical Corps studied 21 patients suffering delayed symptoms following the bombings at Hiroshima and Nagasaki.

Some of the patients studied were as far as two and a half miles from the center of the explosion. Delayed symptoms included the destruction or suppression of the blood-forming system, with disturbance of the liver function.

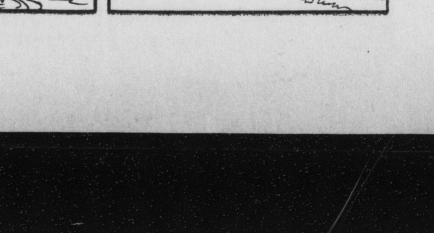
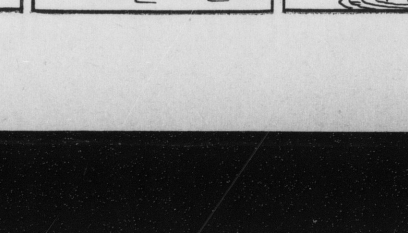
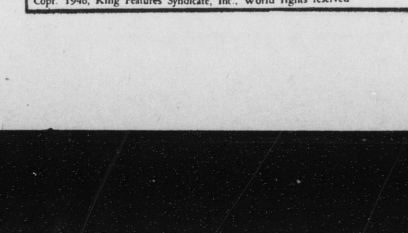
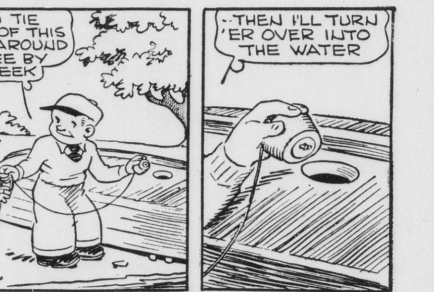
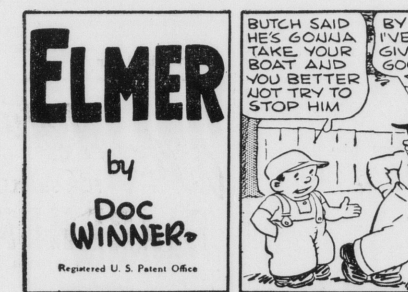
There was a generalized disturbance of the entire body function, chiefly in the blood-forming system. There was reduction of white corpuscles in the blood.

There was decrease in the number of blood platelets, which are thought to be factors in the clotting of blood.

Increased clotting time and a tendency to hemorrhage resulted in anemia, fever and weakness. There was loss of appetite, loss of hair, nausea, vomiting, dizziness and extreme fatigue.

The general effect on the liver caused jaundice and fever. These 21 patients did not include persons receiving severe blast injuries or extensive external burns.

The atom bomb is an awesome instrument of destruction. More people are living longer to die eventually of heart disease. This is especially true of coronary thrombosis.



Berry-patch SPECIAL HOFFMAN'S Sealtest ICE CREAM THE MEASURE OF QUALITY

BLACK RASPBERRY ICE CREAM THE Sealtest FLAVOR-OF-THE-MONTH Real sun-ripened black raspberries—the juiciest and most flavorful of the raspberry clan—are used in this delicious, refreshing July special.