

NEW REFLECTOR TYPE CURB ACTS AS AID TO DRIVERS IN THE FOG

Harrisburg.—The hazards of fog and rain, those two great enemies of the night driver, are appreciably reduced by the new reflector type curbing with which the state highway department is bordering the median strips that separate traffic moving in opposite directions on new multiple lane roads.

With the extended program of highway construction which will follow the war, Secretary John U. Shroyer said, this modern safety measure is expected to be incorporated in the principal new roads, four lanes or more in width, to be built at that time.

The reflector strip, achieves its effect by means of a series of shallow scored faces in the curbing which reflect beams from the headlights. This improvement over the older type of smooth curbing is doubly effective in wet weather.

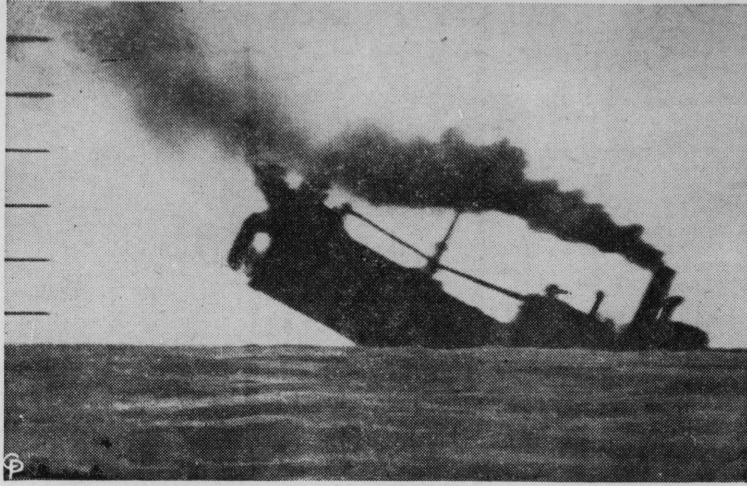
"A smooth, dry white curb, for example," Secretary Shroyer explained, "will reflect very little light back to the driver, because most of the reflected light goes in the opposite direction. And when this smooth, white curb is wet, the beams reflect back practically no rays at all. In contrast the corrugated white curb reflects the rays back to the driver, and the divisor in the center of the pavement becomes clearly visible under either normal or adverse weather conditions.

"On rainy nights the visibility thus achieved actually increases, because the film of water, acting like a mirror on the corrugated surfaces steps up the reflection and emphasizes the contrast with the road or other surrounding surfaces. What this can mean to the driver will be realized by every motorist who has had the experience of proceeding cautiously over roads dimmed by heavy rains."

To an even greater degree the reflecting curb, its advocates say, decreases the periods and uncertainty of driving through fog at night. Because the new divisor curbing in the center of the roadway intensifies both the reflection and the contrast with surrounding objects, it serves as a constant guide to motorists under such conditions, not only supplying a line of light which he can follow, but keeping him from groping past the middle of the road into the approaching line of traffic.

Pennsylvania now has under contract more than 62,000 feet of the reflector curbing, and is providing for the use of 70,600 feet of the reflector curbing on additional excess projects expected to be put under contract within the coming year.

THE WAHOO CHALKS UP ANOTHER JAP VICTIM



MADE THROUGH THE PERISCOPE of the U.S. submarine Wahoo, this photo shows a torpedoes Jap ship as it starts its final plunge to the bottom somewhere in the Pacific. This enemy vessel was one of eight ships torpedoes and sunk by the Wahoo during a recent, far-ranging patrol. The sub is under the command of Lt. Comm. Dudley W. Morton. This is an official U. S. Navy photo. (International Soundphoto)

Acting under a ruling by Justice Horace Stern of the State Supreme Court, who set a precedent by declaring that wages or salaries of husbands are subject to attachment in non-support cases, Mrs. Lola M. Bennett, chief county probation officer, has declared that she would act to attach the pay of husbands who refuse to contribute to the support of their families.

WAGES ARE SUBJECT TO ATTACHMENT IN CASES OF NON-SUPPORT, RULE

Cambria county husbands, who are under court orders to contribute to the support of their wives or children, and fail to do so, may soon find their wages attached.

"In proper cases where husbands refuse to comply with or ignore the court orders to make payments to their wives or children, I will ask that their pay be attached," asserted Mrs. Bennett.

Justice Stern's decision was handed down in the case of Jacob Deutsch, Bethlehem worker, who had failed to fulfill a court order to pay

\$65 a month to his wife. Through the wife's counsel, Attorney Bruce A. Scioto, Mrs. Deutsch asked Judge Ivan J. Mckenrick to grant an attachment of Mr. Deutsch's wages. Judge Mckenrick ruled, however, that wages are not subject to attachment, and an appeal was taken to the Supreme Court.

In his decision Justice Stern declared: "It is argued that the exemption of wages from attachment was not intended merely to confer a personal privilege upon laborers but was enacted for the protection of their employers as well. This is true, but solicitude for the convenience of employers must give way to the Paramount need of society to protect family life and the social institution of marriage.

"Indeed, the exemption of wages from seizure by creditors was designed largely for the very purpose of supplying the wants of wife and of children."

FROST DAMAGE

Considerable heaving of new grass seedlings and alfalfa in many localities of this state as a result of the alternate freezing and thawing during the winter months is reported in the survey of the Federal-State Crop Reporting Service, according to the Secretary of Agriculture Miles Horst. Cool weather during the early spring has retarded pasture growth.

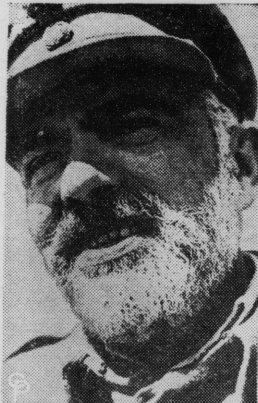
"Wars need money. This month buy bonds."

Felix Eats 'Frank'



SUPREME COURT JUSTICE Felix Frankfurter doesn't mind a pun on his name. He is shown eating a frankfurter at the opening of the National Press Club open house canteen at which boys of all branches of the services are entertained every Saturday. (International)

Still Fights Nazis



THIS BEARDED WARRIOR, Col. Christodoulos Gigantes, is in command of a "sacred squadron" attached to the British 6th Army in Africa. The squadron is made up of men and officers who escaped from Greece and has helped to chase Rommel's Afrika Korps from Egypt to Tunisia. (International)

PARTY LINE PHONE USERS MAKE CONTRIBUTION TO WAR EFFORT, SAYS FOHL

War has increased the number of Pennsylvania families using party-line Bell Telephone service by approximately 100,000 since Pearl Harbor, Edward F. Fohl, manager of the Bell Telephone Company, asserts.

Greatly increased use of party lines has made it possible to meet the increased demands for war time service with a minimum of critical materials, he said.

Nearly 75 per cent if all residential telephone service in the state is now provided by party lines, Mr. Fohl declared. On the basis of the average size family, this means that approximately 2,700,000 Pennsylvanians are now sharing their home telephone facilities with others.

"The telephone is often forgotten when people think of the things they must share in the war time," he said. "But the telephone has gone to war just as have new automobiles, tires and nylon stockings.

"Thousands of new subscribers as well as old subscribers who have moved, have accepted party line service to help spread the existing supply of telephone service. Many of these subscribers have never had party line service before and are not familiar with the 'etiquette' of sharing a line."

The Bell official pointed out three important rules of telephone etiquette which should be particularly stressed during war time: Be brief; be a good "telephone neighbor;" and do not make needless calls.

"Long conversations are bound to be unfair and inconsiderate to the

COL. ROOSEVELT ON BOMBED MALTA



GETTING THE LOWDOWN on how air guerillas on war torn Malta in the Mediterranean battle the Axis bombers is Col. Elliott Roosevelt (left), son of the President. He's watching a British airman load cannon shells into the magazine of an "Intruder" plane. (International)

A Small Loan will clear those old accounts!

Why not consolidate your Spring Expenses, such as Painting, Papering, Repairs, Etc., with a Friendly Barnesboro Budget Plan Small Loan. We are ready to offer you a quick, convenient, confidential small loan to help you with your cash problems.

Loans up to \$300

MAY BE REPAYED IN EASY CONVENIENT INSTALLMENTS

Prepare Now!

Your Second Income Tax Installment Payment is due on June fifteenth — If you are short of cash to meet it on that date —let US help you.

Hours: 9 to 5:00 Daily, Except Wednesday Afternoon

BARNESBORO BUDGET PLAN, INC.

Telephone 467 BARNESBORO

A FRIENDLY LOAN SERVICE TO MEET EVERY NEED

Buy War Bonds and Stamps!

For Daytime Duty



Modified dirndl.

By VERA WINSTON

THE MODIFIED dirndl silhouette is such a favorite that it automatically makes its appearance in almost every collection. This silhouette is used for a little daytime dress of dahlia red crepe with staccato accents of black strategically placed in the inserted bands that run both horizontally above the hem and vertically down either side. There are unpressed pleats at the center front of the skirt. The cuffs are trimmed in black.

other users of the line who may be waiting to make an important call," he pointed out. "They may also be delaying important war or emergency calls because they are tying up central office equipment which can only handle so many calls at one time.

"Party line users are urged to treat other subscribers as they would like to be treated themselves. When a click is heard, indicating another subscriber wants to use the line, the cooperative thing to do is to bring the conversation to a close as soon as possible, just as you would want the other subscriber to do if you had to make the call."

The telephone system is now handling the largest volume of calls in history, many of them vital war

calls, the Bell manager said, adding that these calls can only be handled efficiently if all subscribers cooperate.

"We cannot expand our facilities now because of material shortages," he declared, "but we can stretch them to handle the necessary wartime increase in calling by cooperation, particularly in keeping call short. The equipment needed for one fifteen minute call can handle five three minute calls at the same time."

DIES AFTER PLUNGE INTO A MINE SHAFT

George Krepp, 37, of Franklin, Pa., was injured fatally Thursday morning when he plunged 35 feet down a shaft which is being constructed on the Charles Hill farm in Cambria Township. Krepp was rushed to the Colver hospital, where he died late Thursday afternoon of head injuries. The shaft is being constructed by the Williamson Shaft Construction Company of Columbus, Ohio. Krepp was being lowered into the shaft in a bucket shortly before 11 o'clock on Thursday morning when the bucket is said to have struck a timber, the impact loosening the hook holding the bucket and throwing the man to the bottom.

George Krepp was born on Sept. 25, 1905, in Franklin, a son of Geo. M. and Lottie Krepp. He is survived by his widow. The body was removed to Franklin for burial.

—America's printing industry uses about 250 pounds of printing and lithographing inks a year, valued at 43 million dollars.

Balsinger & Luther

GREENHOUSES

Flowers for All Occasions

•• Stores At ••
EBENSBURG, . . Phone 295
BARNESBORO, " 378
CRESSON, . . . " 6681

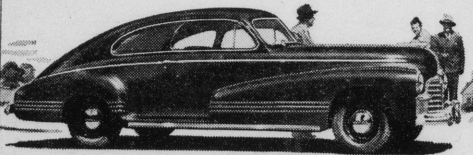
Flowers Telegraphed Anywhere



AT FIRST SIGN OF A
COLD 666
USE
666 TABLETS. SALVE. NOSE DROPS

Additional Thousands Now Permitted to Buy

New Pontiacs



Get yours while you can have a choice of body types and colors

Additional thousands are now eligible to make application for the purchase of new Pontiacs. A ration certificate may now be obtained by any person belonging to any of the following groups, if his present car is a 1939 or earlier model, or if his car, irrespective of age, has been driven over 40,000 miles, and in either case the Rationing Board considers the car not serviceable.

1. Essential war, hospital or utility worker.
2. Construction, repair, maintenance worker or production specialist.
3. Transport four or more to school.
4. Transport farm or marine workers.
5. Physician, veterinarian, interne or public health nurse.
6. Minister, priest, rabbi, embalmer.
7. Labor conciliation, recruiting, training workers.
8. Official government or Red Cross business.
9. Traveling school official.
10. Member of armed forces traveling to duty.

TOP PRICES PAID FOR USED CARS

America's essential workers need more and more used cars to keep rolling to work. If your car is not being used —or, if you want to sell it for any reason—see us FIRST for our SPOT CASH and HIGH DOLLAR offer. We are buying all makes of cars. The cars we are buying are being subjected to a careful checking or reconditioning program and then because of the volume we are handling, offered for sale at attractive prices. You can help, indirectly, in the war effort—and you can get a big price for your car —by selling it to us NOW.

WESTRICK MOTOR CO.

Main and Scanlon Sts., Carrolltown