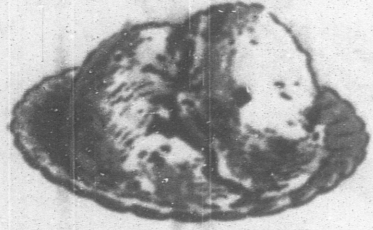


Make your  
**HOFFMAN**  
DEALER  
your headquarters for  
**December**  
**Ice Cream Treats**



**FRUITED-NUT**  
**ICE CREAM**

Choice fruits, mery nut meats, blended with rich cream and other fine ingredients and frozen into a luscious ice cream. There's a treat for Holiday appetites! Try it today.



**CHOCOLATE FUDGE**  
**ICE CREAM PIE**

—the Seaside-Approved Dessert-of-the-Month. Vanilla Ice Cream forms the crust. The filling is creamy chocolate fudge. And the gay decorations are of frozen whipped cream. Don't miss this unusual treat.

**Seaside APPROVED**  
Seaside, Inc. and its company are under the same ownership.

**Lives 3 Days on Theory:**  
**Hope Father of Thought**  
PARIS.—An amateur psychologist in a Paris suburb has been living in regal style for three days by expelling the public state of mind. He would rush into bars announcing that Adolf Hitler had been assassinated and that he was thirsty. When police caught up with him and advised him to stop his campaign, he told with pride that he had not paid for a single meal nor drawn a sober breath for three days.

Press-Courier advertisements pay!

**NEW TYPEWRITERS**...  
Eagle Printing Co., Barnsboro

**Fort Bliss to Be**  
**Army School**

Will Expand Reservation as Laboratory for Big Problems.

EL PASO, TEXAS.—A vast cavalry laboratory of 51,300 acres for U. S. army training will be added to the Fort Bliss military reservation here under an authorization act passed by congress and signed by President Roosevelt.

An army land acquisition board is expected to survey the area within the next few weeks for selection of the acreage to be purchased as the first step in an expansion of the post. The proposed enlargement under the present authorization act would extend the military boundaries north and east to include terrain which is ideal for cavalry maneuvers.

**Terrain Considered Ideal.**  
This area was selected for the enlargement program, which it is hoped ultimately will comprise 150,000 acres in Texas and 350,000 in New Mexico, because of military advantages not as easily obtainable in other sections of the country. Scattered population, accessibility to water and forage, climatic conditions and proximity to rail and highway were considered in the selection.

Although exact outlines of the authorized 51,300-acre acquisition await determination by the army land board, the area will include mountainous regions, foothills and level terrain—providing all types of land conditions for use in cavalry movement as well as for reconnaissance and scouting. Thus the territory will provide tactical officers with a vast laboratory for working out cavalry problems.

The scattered population of the desert area will enable long range firing practice for artillery and troops as well as bombing and ground strafing ranges for army airplanes.

**Further Extension Sought.**  
Chamber of commerce officials here, under the leadership of W. H. Peterson, president, and Capt. E. H. Simons, secretary, have pressed congressional and war department officials for enactment of the expansion plan. They hope within the next few years to encourage further land purchases by the federal government for enlarging Fort Bliss for an additional 500,000 acres. The land in New Mexico, of the same type as that to be acquired under the present authorization act, is largely federal and state domain and could be acquired at a relatively nominal cost, Peterson said.

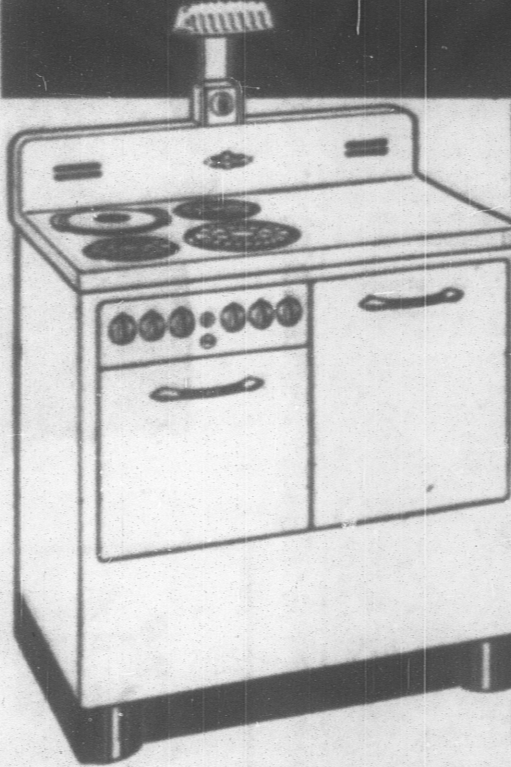
With the post enlargement, the chamber of commerce head sees a probable increase in the number of officers and men stationed at Fort Bliss, strategically located on the Mexican border halfway between the Pacific coast and the Gulf of Mexico.

Peterson's present goal is a full



**REUEL SOMERVILLE**  
ATTORNEY-AT-LAW  
Office in Good Bldg., Patton

Beautiful New Cabinet-Style  
**FRIGIDAIRE**  
Electric Range



**All These Features at All-Time Low Price**  
Automatic Time-Signal  
Do Less Cooking Top Lamp  
Distinctive Cabinet Styling  
Every Unit a "Speed-Heat"  
Unit with 3 Cooking Speeds  
Full Size Economical "Even-Heat" Oven  
High-Speed Boiler  
Double-Duty "Thermistor"  
Unusual Storage Drawers  
Plus  
1-Flare All Porcelain Cabinet  
1-Flare Stainless Porcelain Top  
1-Flare All Porcelain Oven Interior  
"Evensize" Max. Dishwasher  
Non-Tilt Sliding Shelves  
Copper-Plated, Self-Type Oven Door  
Front Opening Oven Vent  
Hydraulic Oven Heat Control  
Automatic Wiping  
Silver Contact Switches  
Convenient Record-Order



Designed by 7550 Housewives!  
Combines Low Cost... High Speed... Sure Results!

This beautiful new Frigidaire Electric Range—a special for Christmas buying—is the most remarkable value ever sold at the price. For beauty, quality construction, features and convenience, we believe it's without an equal. Feature after feature found in no other range.

Has the basic features that 7550 housewives voted the most desirable that could be built into a range. Makes modern electric cooking cleaner, cooler, more economical than ever. You'll thrill her for years to come by giving this Frigidaire Electric Range. Come in—see it today! Easy payment plan terms, if desired.

ONLY  
**\$148**  
Easy Terms

**Bender Electric Co.**  
CARROLLTOWN JOHNSTOWN

- |                      |            |                            |
|----------------------|------------|----------------------------|
| Charlson's Store     | Barnsboro  | Barnes & Tucker Store Co.  |
| George Bros.         | South Fork | Barnsboro                  |
| Hogue Hardware       | Cremora    | Bakerston                  |
| Shettig Hardware     | Ebensburg  | Bakerston Supply Co.       |
| N. W. Moore Hardware | Portage    | John Marusha               |
| Common Hardware      | Nanty-Glo  | H. J. Eady Furniture Store |
| Hughes Store Co.     | Lilly      | Hunting                    |

corps of cavalry, whose mobility on the trackless desert along the border has not yet been proved inferior to any other armed branch, including mechanized forces. Ultimately he hopes to see a concentration of U. S. cavalry tactical schools at the site of the vast field laboratory.

**Sweden Increases Sales**  
**Of Prefabricated Houses**  
STOCKHOLM.—Sweden is exporting the prefabricated houses which have steadily increased in popularity among its own people in the last few years. Official figures show that production increased from 1,546 units in 1933 to more than 5,000 in 1938. Two main classes are manufactured. One is the light summer cottage type. The other is the fully timbered house, manufactured in all types, including bungalow, cottage

and villa for which cement and brick foundations are required.

**Story Contest Won**  
**By Blind Girl, 18**  
SEATTLE, WASH.—Eighteen-year-old Marion J. Anderson lives in a world of perpetual darkness. Yet the blind Seattle girl's rich mind conceived a story of a butterfly and so glowingly put it down on paper it won first place in a nationwide contest. The story, a fairy-tale entitled "How the Butterfly Got Its Name," was selected as best in a short story competition conducted by the Seattle Searchlight Magazine, published in New York.

**Navy Shipmates Meet;**  
**Recognition Falls Both**  
OKLAHOMA CITY, OKLA.—Deputy Sheriffs Jack Sudberry and Al Croaker had worked side by side for six months. Recently, they answered a call to pick up an intoxicated driver near Lake Overholser, the Oklahoma City water reservoir. As they approached the lake, Croaker saw a motor boat operating at high speed. "That's the life of Riley," he told Sudberry. "I got a lot of that in the navy." "I was in the navy, too," Sudberry said. "What boat were you on?" Further conversation disclosed that the drunken motorist was the U. S. S. Beaver, a submarine tender, during the World War. They served on the same boat for a year.

**LEGAL ADVERTISEMENT.**  
The Receiver of The First National Bank of Patton, Patton, Pa., not wishing to permit the real estate known as the New Palmer House lot, located on Magee and Fifth avenues in the Borough of Patton, to pass into the hands of an outside syndicate through the sale of the remaining assets is reserving that parcel from the general list until December 30, 1939, and solicits all persons having interest to acquire said premises to communicate their desires in order that a bona fide offer may be submitted to the Comptroller of the Currency for approval prior to the sale of the remaining assets.  
YANK M. WEISBERG, Receiver,  
The First National Bank of Patton, Patton Pa.  
Use a similar flame under aluminum than under iron.

**ATLANTIC**  
SIGNS FOR WINTER DRIVING

Stop at the big red Atlantic sign this winter and ask for Atlantic Ice-Fox, the moderately priced, modern anti-frost that won't evaporate from your radiator. Also ask for chains and other winter accessories. But above all, ask for Atlantic White Flash, Atlantic Motor Oil and Atlantic Lubrication Service. They are Atlantic's Famous Three, designed to help your car provide splendid performance straight through the winter, designed to help you save money. Come in today.

**ATLANTIC**  
LISTEN TO ATLANTIC FOR THE BEST IN SPORTS BROADCASTING

Only **149.75**

**EASY TERMS**

**Christmas Special**  
**FRIGIDAIRE**

Features Water-Proof Mechanism, Double-Cup Quiklets Ice Tray, Stainless Porcelain Hydrator, Automatic Light, Open-Grid Freezer Door, All-Steel Cabinet, Solid-Building Porcelain in Food Compartment... and Many More Advantages!

Look at the price—then come in and see the great refrigeration value. Compare Frigidaire—big 6 cu. ft. size—dozens of Frigidaire's famous advantages—the same quality construction features as other expensive Frigidaire models made. Buy now—on our special Christmas buying terms.

Only Frigidaire Has the Water-Shield!

Slightest refrigerating mechanism ever built! White-porcelain, Unseen, Trouble-Free. Cost comes out so low.

**ALL-TIME LOW PRICE FOR 6 cu. ft. Frigidaire with all these features!**

ALSO A COMPLETE LINE OF FRIGIDAIRE AIR CONDITIONING — BEER COOLING — MILK COOLING AND HOTEL, RESTAURANT AND MEAT MARKET COOLING EQUIPMENT.

**Bender Electric Co.** Carrolltown & Johnstown

CHARLSON'S STORE	Barnsboro	BARNES & TUCKER STORE COMPANY	Barnsboro
GEORGE BROS.	South Fork	BARNES STORE CO.	Bakerston
HOGUE HARDWARE	Cremora	BAKERSTON SUPPLY CO.	Ebensburg
SHETTIG HARDWARE	Ebensburg	JOHN MARUSHA	Callahan
N. W. MOORE HARDWARE	Portage	H. J. EADY FURNITURE STORE	Hunting
COMMONS HARDWARE	Nanty-Glo		
HUGHES STORE CO.	Lilly		