

17,000 CHECKS OF STATE, LOST, MISUSED YEARLY

Harrisburg — More than 17,000 checks of the Commonwealth — or about seven dollars, has declined sharp-

Carelessness and petty thievery are chiefly the blame, the study shows, although complaints range all the way from those of an individual who tossed three State checks into a fire by mistake, to the simple and unadorned "rubber check" nuisance.

Straightening out this tangle; tracking down elusive drafts; rerouting them to proper destinations; bringing thieves and forgers to justice; correcting honest errors; righting misunderstandings, re-issuing lapsed checks, etc. keeps three reconciliation units and a Bureau of Investigation busy in his Department, Treasurer Ross pointed out.

Direct relief checks go astray at the rate of about 500 a month, the report shows. Chief cause is petty thievery—checks stolen from hallway mailboxes, especially in tenement dwellings. But theft of these drafts, which average about seven dollars, has declined sharply since drastic treatment of relief checkers has focused attention on recipients of these payments.

The past nine months brought investigation of nearly 5,000 checks issued in payment of Unemployment Compensation, according to the State Treasurer who disburses these drafts and who is charged with investigation of irregularities. In more than 700 of these cases definite indications of larceny or forgery sent the cases into court; and in all but two, offenders were convicted.

The majority of investigations in this classification, however, are made unnecessary by honest errors on the part of the recipients, in the opinion of Treasurer Ross. In other cases, however, a wife or child will receive a job insurance check and cash it without telling the husband or father to whom it is drawn. In such instances no legal action is brought if restitution is made and if a release is signed by the payee.

Carelessness accounts for the loss of many checks drawn against the General Fund. Most of them are to pay per diem highway workers. Their average amount is about \$25 and they usually are mutilated by accident or lost. There is seldom any irregularity in their disappearance and few cases require prosecution.

Another duty of the reconciliation Bureau is re-issuance of lapsed checks. These appear at the rate of about \$300 a month, Treasurer Ross says. They range in value from one cent to \$3000 and represent checks, given in payment for petty bills of the State, which recipients neglect to cash within the 60-day limit fixed by the Commonwealth. They are usually presented shortly after the expiration date and are re-issued without protest if found to be still in order.

The State's crop of "rubber checks" is of the ordinary garden variety. They usually come from misguided individuals who issued them to meet a tax or fee payment deadline without sufficient funds in the bank.

ADMINISTRATRIX'S NOTICE. Estate of Ella Mansfield, late of the Borough of Chest Springs, Cambria County, Pennsylvania, deceased. Letters of administration on said estate have been granted to the undersigned, all persons indebted thereto, are requested to make immediate payment, and those having claims or demands against the same, will present them without delay for settlement to the undersigned, residing at No. 1208 18th Street, Altoona, Pa. ADA J. GRIMES, Administratrix C. J. McCullough, Attorney, Myres Bldg., Altoona, Pa. 6t.



HOFFMAN'S Strawberry Cake Roll

LIGHT, FLUFFY SPONGE CAKE WITH A CENTER OF FRESH STRAWBERRY ICE CREAM

A perfect combination of cake and ice cream—all ready to cut and serve. You'll swear that sponge cake is home-baked—it's so light and fluffy. And you already know our famous Fresh Strawberry Ice Cream. Ask our nearest dealer.

Another April Treat! BUTTER PECAN ICE CREAM

A smooth, rich ice cream that is chock-full of toasted, buttered pecans. Try it today!

THE Sealest-APPROVED FLAVOR OF THE MONTH

YES, THEY'RE REAL



Juliette Marglen, Hollywood beautician, is a fingernail expert. She should know her business, as her own nails are between three and four inches long, and she seldom even chips one. Her fingernail hospital is a boon to stars who go there for nail repairs to avoid delays in production schedule.

CORRECTIONAL FEDERAL JAIL WILL BE SET UP

Washington — Some sheriffs make "handsome" profits by supplying inferior foods and medical treatment to prisoners in county jails, James V. Bennett, federal director of prisons, charged last week in a statement announcing opening of a new federal correctional institution at Sandstone, Minn.

The \$826,500 institution, with accommodations for 500 convicts will house prisoners whose sentences are 18 months or less, principally from the states of Illinois, Minnesota, Wisconsin, Iowa and North and South Dakota. Bennett said upkeep of the prison will cost less than fees now paid to counties for boarding federal prisoners.

"The laws in many jurisdictions permit the sheriff to charge the county a per diem fee for each prisoner held in his jail," he said. "This fee has no relation to the service rendered, and in some cases sheriffs make a handsome profit by depriving the prisoners of reasonably decent food, medical treatment, etc., and pocket the amount between the cost of operating the jail and the fee received from the county." It was such conditions, in addition,

to "kangaroo courts" and inadequate sanitary facilities in county jails, Bennett said, that encouraged the federal government to expand its prison system.

"The average county jail is an anachronism in our modern social structure," he said. "It survives through the indifference of the public and because of a shortsightedness which would exploit the offender."

"By and large most county jails lack proper sanitary facilities; young and old, the sick and the well, the guilty and the innocent are allowed to mingle indiscriminately."

"In few jails is any effort whatsoever made to rehabilitate the prisoner — provide him with a modicum of work or improve his physical and mental condition. It was because of these conditions that the federal government upon its program of establishing its own regional jails."

ARGUMENT OVER BOUNDARY ENDS WITH SHOOTING

One man is a patient in Spangler Hospital and another is lodged in Indiana County jail as a result of a dispute late last Thursday afternoon over boundary lines of some lands in Montgomery Township, Indiana County, between Cherry Tree and Hillsdale. The dispute ended in the shooting of Harry E. Walker, 30, a Cherry Tree WPA worker, who was taken to Miners Hospital at 7:45 o'clock last Thursday evening by Chief of Police J. S. Irwin of Cherry Tree.

The victim was not seriously injured, hospital attaches said, although doctors and nurses worked for hours removing shotgun pellets from his head face and shoulders. The prisoner is Dempsey McCreary, 57, also of Cherry Tree, who is alleged to have shot Walker for encroaching upon the McCreary ground.

Orphans' Court Sale.

In the Orphans' Court of Cambria County Pennsylvania. In the Estate of Matthew Montgomery, late of Clearfield Township, Cambria County, Pennsylvania.

By virtue of an order of the Orphans' Court of Cambria County, the undersigned will expose to public sale, for the payment of debts, on Saturday, the 29th day of April, 1939, at 3 o'clock, P. M., upon the premises, the following described real estate:

All that certain piece or parcel of land lying and being in the Township of Clearfield, Cambria County, Pennsylvania, adjoining lands of Neason heirs, M. J. Cupples and Gerald Adams, containing three acres and sev-

enty seven perches, having thereon erected a frame dwelling house, blacksmith shop, barn and other farm outbuildings, being the residence of the late Matthew Montgomery, deceased. Title to which became vested in Matthew Montgomery, deceased, by deed from John Montgomery, dated 21st July, 1921,

recorded in the office for the Recording of Deeds in Cambria County in Deed Book Vol. 336 at page 281.

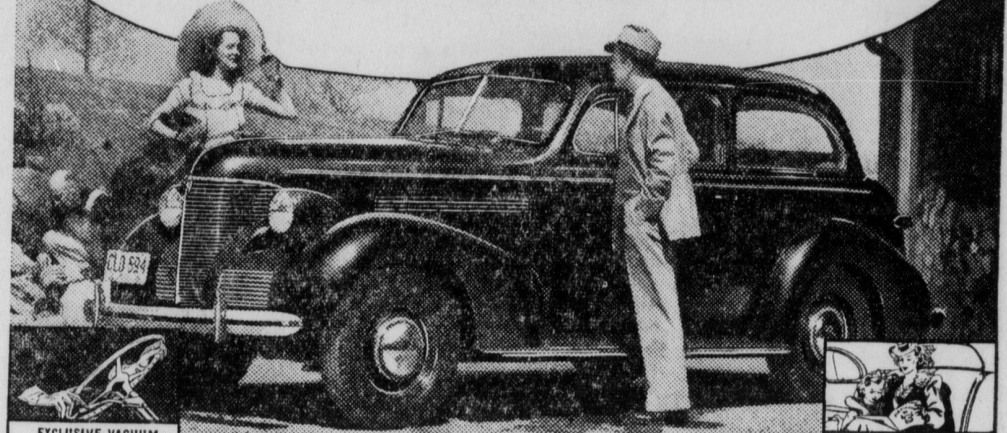
The undersigned reserves the right to reject any and all bids, and to continue the sale.

TERMS OF SALE: Twenty five per cent of the purchase price when the

property is sold, and the balance upon confirmation of sale and delivery of deed.

William R. Platt, Administrator of Matthew Montgomery Reuel Somerville, Attorney for Administrator, Patton, Pa.

LEADERSHIP IN VALUE BRINGS LEADERSHIP IN SALES



Chevrolet is first in sales because it's first in styling—first in acceleration—first in hill-climbing—and first in value in its price range!

Again the people of the nation are awarding Chevrolet first place in motor car sales!

And the reason they are buying more Chevrolets than any other make of car is that this new Chevrolet gives them more of all the things they want in a motor car, at lower cost.

Visit your nearest Chevrolet dealer today! See, drive and buy the nation's fastest selling motor car and the nation's biggest dollar-value!

CHEVROLET A GENERAL MOTORS VALUE "ALL THAT'S BEST AT LOWEST COST!"

- EXCLUSIVE VACUUM GEARSHIFT Vacuum Booster Supplies 80% of the Shifting Effort
NEW AERO-STREAM STYLING New Bodies by Fisher
CHEVROLET'S FAMOUS VALVE-IN-HEAD SIX
PERFECTED HYDRAULIC BRAKES

- PERFECTED KNEE-ACTION RIDING SYSTEM On Master De Luxe models only
NEW "OBSERVATION CAR" VISIBILITY
TIPTOE-MATIC CLUTCH
ALL CHEVROLET PRICES ARE MUCKY LOWER!

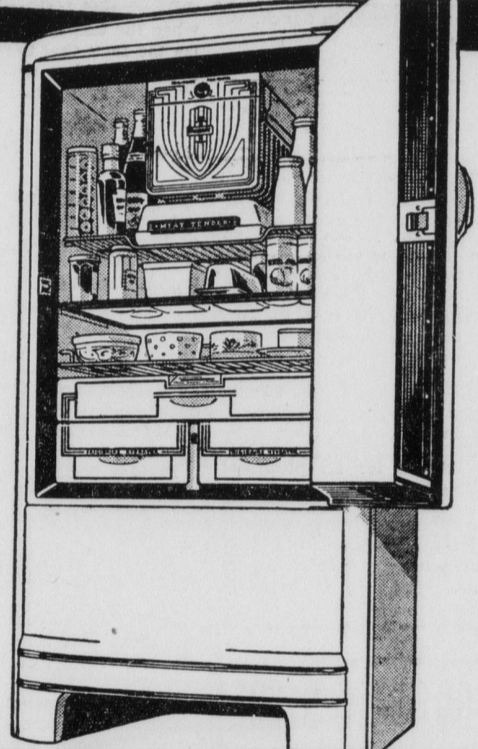
PATTON AUTO CO. PATTON, PENNA.

New "COLD-WALL" Frigidaire with the Meter-Miser!

THE WORLD'S FIRST "COLD-WALL" REFRIGERATOR! Built on an entirely New Principle that saves food's vital freshness from drying out

For the first time, you can now store even highly perishable foods—and prolong their original freshness, retain their nourishing richness and peak fresh flavor... days longer than ever before! Come in. Convince yourself in 5 Minutes. See how this new Frigidaire puts you years ahead in every way—in beauty, usability, economy as well as food-preservation. Yet costs no more than ordinary "first-line" refrigerators!

CONVENIENT TERMS AS LOW AS 25c A DAY



Frigidaire Super-Value 6 BRAND NEW 1939 MODEL, ONLY \$149.75 Big, roomy, full 6 Cubic Ft. size! Gives you the Same Simplest Refrigerating Mechanism, same Meter-Miser, same one-piece steel construction and same General Motors 5-year Protection Plan as Frigidaire's models costing up to \$100 more. Quality at a Super-Value price!

COME IN AND SEE HOW IT WORKS... NOW, FOR THE FIRST TIME THE NEW "DEW-FRESH SEAL"—A SOLID GLASS PARTITION—DIVIDES THE CABINET INTO 2 COMPARTMENTS. and THE LOWER COMPARTMENT IS REFRIGERATED DIRECTLY THROUGH THE WALLS BY CONCEALED REFRIGERATING COILS. This provides all 3 essentials for keeping foods vitally fresh longer than ever before—1. Uniform Low Temperatures. 2. High Humidity. 3. No Moisture-Robbing Air Circulation. All without adding a single moving part! AND ONLY FRIGIDAIRE HAS IT!

ALSO A COMPLETE LINE OF FRIGIDAIRE AIR CONDITIONING — BEER COOLING — MILK COOLING AND HOTEL, RESTAURANT AND MEAT MARKET COOLING EQUIPMENT.

BENDER ELECTRIC CO. CARROLLTOWN & JOHNSTOWN

- CHARLSON'S STORE Barnesboro
GEORGE BROS. South Fork
HOGUE HARDWARE Cresson
SHETTIG HARDWARE Ebensburg
N. W. MOORE HARDWARE Portage
COMMONS' HARDWARE Nanty-Glo
HUGHES STORE CO. Lilly
BARNES & TUCKER STORE COMPANY Barnesboro
BARNES STORE CO. Bakerton
BAKERTON SUPPLY CO. Elmora
JOHN MARUSKA Gallitzin
H. J. EASLY FURNITURE STORE Hastings