

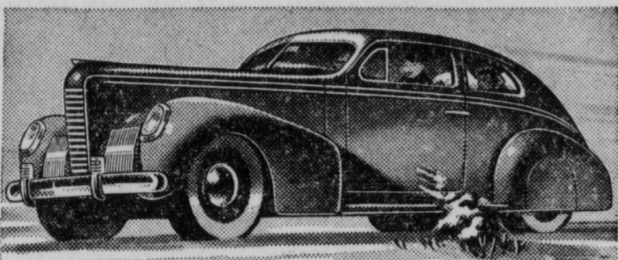
BELIEVE IT OR NOT—

THIS BIG 6-PASS. VICTORIA SEDAN \$849

DELIVERED HERE

Standard Equipment and Federal Taxes Included. (White sidewall tires and rear wheelhubs)

THAT'S ALL it takes to own this long, sleek new 1939 Nash full size, 117" wheelbase sedan. And it's the talk of the U.S.A.! Take a 15-minute spin... see how Nash's automatic "WeatherEye" keeps fresh summer air inside your car—even though a blizzard howls outside. Note the spacious new interior... the convertible bed... the smoothness and silence of the ride! Don't wait! Drive the new Nash—today!



It's that New NASH THE CAR EVERYBODY LIKES

(Optional Equipment—Slight Extra Cost)

We want you to drive it! Your Nash dealer has one ready, with the engine running. Get in and go!

DIETRICK MOTOR Co.

416 LANG AVENUE

PATTON, PA.

THE SOWER

A Weekly Department of Religious and Secular Thought Contributed by REV. JAMES A. TURNER, Pastor, M. E. Church, Patton, Pa.

"YE SHALL BE AS GODS."

"For God doth know that... your eyes shall be opened, and ye shall be as Gods, knowing good and evil." The only way that one's eyes can be opened,—that is, come to a full knowledge of the truth,—is through the actual experience and business of living in every day life. One might come to some knowledge of the truth in the realms of abstract thought and pure science, but all such knowledge, as well as that coming through revelation and inspiration, must be brought to the test of ordeal, trial and concrete living in the laboratory of human experience. Else there can be no definite and ultimate certainty about its claim to validity. "In the day that ye eat, (act, live, do, experience) your eyes shall be opened, and ye shall KNOW."

Let us look into this matter a little. The Scriptures tell us that we are the offspring of God, begotten in His image, and made like unto Him in all our parts; also that, since like begets like, each bringing forth according to its kind, we therefore, being children of God, inherit His characteristics, in-

stincts, qualities, properties, nature, and potentialities. The inevitable corollary to this truth is that: being part of God and therefore partakers of His nature, we His offspring, His children, can, and will become, in due course of time, gods ourselves. We are all essentially, potentially, a part of the Deity,—divine in our nature, and are on our way to the full realization and expression of our Divine nature.

Jesus said to the carping Jews, who were denying this exalted truth, (John 10:34-36.) "Is it not written in your law, 'I said you are gods?' If the law said they were gods, to whom the word of God came,—and the Scripture cannot be broken—do you mean to tell me, 'You are blaspheming,' because I said, 'I am God's son?'" (The Word of God would not come to any, could not be understood by any, but those who are the offspring of God,—proving truly that we ARE gods, though we may be in this world only infantile gods.)

Possessing then, with Jesus, the essential properties of our Father's nature, (and why call Him Father if we do not?) we can grow up, in due course of time, to the full measure of the development which rightfully belongs to those who have sprung from Him and inherited His nature and character qualities, and reach the full stature of divine sonship—as did Jesus—thus enjoying the glories and blessings of divine accomplishments and God-like perfection—becoming as gods like unto our Father-God, and

shining with all the beauty, charm and luster of a full, rich divine character.

Jesus said, "Be ye perfect as your Father in Heaven is perfect." So Paul said: "For this reason, then I kneel before the Father, for whom every family in heaven and on earth derives its name and NATURE, praying that, out of the wealth of His glory He may grant that you may be filled with the entire fullness of God. Copy God, then, as His beloved children, and lead lives of love, in order to be set everyone before God mature, as was Christ, laboring to that end, yea, agonizing for it, with the divine energy that is in you. It was in Christ that the fullness of God's nature lives embodied, and in union with Him YOU TOO are filled with it."

Well, then since we are children of God, inheriting His name and nature, His instincts, spiritual capacities, properties and potentialities, some day, in the distant future, when we grow up, we also shall be filled with the entire fullness of God." stand with Him as fellow-Gods, and know and enjoy all the blessings of a fully matured, Deity-character as does the Father Himself.

But in order to come to that God-like estate we must grow, and in order to grow, we must have our eyes opened so that we may know the difference between good and evil—for that is a Godlike characteristic—and in order to have our eyes opened so that we may know the difference between good and evil we must live life as fully and as largely and as effectively as it is possible for us to live it. We must leave no sector or area of life untouched, and, as far as we are able, enter into every good thing that is being done, with everything that we have in time, talent and money. For if we don't live, we don't grow. A Godlike character cannot be developed in a vacuum—in a selfish, self centered life.

One must be out in the current of active living—striving, serving, sacrificing, loving, suffering, helping, forgiving life—in order to develop God-like character. — "Inasmuch, as you have done it unto these my brethren, the strangers, those in prison, the naked, the cold, the blind, the hungry, the sick, the destitute and underprivileged, the lonely and the depressed, the heartbroken, and those who feel that no man careth for their souls, ye have done it unto Me, and have become like me and my Father in heaven."

Upon this has the Great Son, Jesus the Anointed One, built His Church, His "ecclesia," the "ones called out," upon this desire to serve His brethren and bring them into their full God-likeness, has He built up a great organization of people who are dedicated to the high task of demonstrating the true way of life in order that those in darkness might have a great light by which to walk, and a great love by which to live—so they might grow to a mature God-likeness.

In our individual work in that great Church we can well emulate the great Paul in his famous testimony: "I would know Him in the power of His new life and the fellowship of His suffering, to see if I too can attain unto the new life. Not that I have already attained this or am already perfect but I press forward to appropriate it, because I have been appropriated myself by Jesus Christ. My one thought is to press on." Continued next week.

PATTON METHODIST EPISCOPAL CHURCH

James A. Turner, pastor. Church school at 10 a. m. Preaching at 11 a. m. and 7:30 p. m. Mid-week Bible class, Wednesday evening at 7:30. Br. Benson says: "It always seems to me reasonable that if God can reveal himself and make His purposes known—that He should do so. If God cannot reveal Himself, there the matter ends. But if God can make Himself known, and does not, that is altogether beyond my comprehension. The Bible is the record of God's progressive self-revelation—first, to the people of Israel, afterward to the world in Jesus Christ. It tells us not only what men have thought about God and what they have done for God, but what they have experienced of God. Thus, by bringing us into touch with men and women who have found God before us, it encourages us to believe that we can find God for ourselves and it tells us how to do so.

Come to the mid-week Bible class on Wednesday evening from 7:30 to 8:00, and you will find it to be one of the most blessed half hour periods that you can enjoy during the whole week. Bring your Bible or Testament, and someone, a neighbor or friend, and study a little while with us that greatest of all literatures that the world has known. It will make you a bigger man or woman.

DO YOU KNOW?

The death rate remains the ultimate test of skill and attention in medical practice. Compulsory health insurance has not lowered the death rate in any country in which it is now in vogue—and the United States, without any such socialistic sickness scheme, has the best health record in the civilized world. More than 80 per cent of the education of the average child is obtained through his eyes.



So Simple... Yet So Complex!

Few things are simpler than making a telephone call. Yet few things are more complex than making that call possible. For there are some 19,000,000 telephones in this country that can be connected with yours. We never know which one you'll ask for next. Yet we must be ready to make any connection quickly, clearly and accurately.

And we do that five million times a day in Pennsylvania alone! That requires millions of dollars worth of intricate equipment. Plus 16,000 highly-trained people. And careful, experienced management. It requires unending research, standardized manufacture and a high-grade personnel with the spirit of service.

The result is Bell Telephone service—fast... accurate... reliable. Nowhere in the world can you find its equal.

Americans know that it pays to use the telephone. It gets things done in a hurry. It eliminates waste motion and saves money. It gives you pleasant, personal, two-way contact with almost anyone, anywhere. Perhaps you should use your telephone more—for profit and pleasure! The Bell Telephone Company of Pennsylvania.

A Message from—

UNITED DISTILLERY WORKERS LOCAL INDUSTRIAL UNION, NO. 857, MANOR, PA.

DEAR SIR AND BROTHER:— We, the members of United Distillery Workers Local No. 857, Manor, Pa., are proud of the fact that our employer, Fry & Mathias, Inc., has the distinction of being the first distillery in the United States of America to voluntarily organize its workers under the banner of the C. I. O. And an equally important fact which we want you and all other union men to know is that we are a 100 per cent closed shop. Union men everywhere should know that Fry & Mathias, Inc., cooperates to the fullest extent with the C. I. O.

The products of Fry & Mathias, Inc., are known throughout Pennsylvania for their fine quality. To those of you who purchase and use liquor we suggest that you always ask for our brands which are listed on this advertisement and are on sale at your favorite tavern and all Pennsylvania State Liquor Stores. We solicit your cooperation to spread the news among all union men that when they buy liquor they should show their loyalty to the C. I. O. by purchasing products of Fry & Mathias, Inc.—a 100 per cent C. I. O. Company, operating a closed shop. Fraternally yours, A. NALEY, PRESIDENT, United Distillery Workers Local Industrial Union, No. 857, Manor, Pa.

UNION MADE LIQUORS

FRY & MATHIAS, Inc., Manor, Pa.

OLD MANOR A blend—85 Proof.—Quart. \$1.17; Pint, 62c.

OLD BRIDGEPORT Straight Rye Whiskey—90 Proof. Quart, \$1.34. Pint, 69c.

GENERAL FORBES Bourbon Whiskey, 2 years old—90 Proof. Quart, \$1.34. Pint, 69c.

WHITE EAGLE Straight Rye Whiskey, 2 years old—90 Proof. Quart, \$1.34. Pint, 69c.

OLD WESTMORELAND Straight Rye Whiskey, 3 year old—90 Proof. Quart \$1.59; Pint, 84c.

OLD BRIDGEPORT Bottled in Bond, 7 to 8 years old. PINT, \$1.75.

MON VALLEY, Old Fashioned Rock & Rye—70 Proof. QUART, \$1.50.

MON VALLEY SLOE GIN —70 Proof FIFTHS, \$1.25.

WINNER Straight Rye Whiskey; 2 years old; 100 Proof. Quart, \$1.59; Pint, 84c.

On Sale at Your Favorite Tavern and All State Stores.

THE BEST VALUES IN NORTHERN CAMBRIA CO.

GOOD, SERVICE Used Cars!

WHEN YOU BUY A USED CAR FROM US, YOU CAN REST ASSURED THAT YOU WILL GET COMPLETE SATISFACTION IN ACCORD WITH THE AMOUNT YOU INVEST. THERE ARE THOUSANDS UPON THOUSANDS OF GOOD MILES STILL UNTRAVELED IN OUR FINE SELECTION OF GOOD USED CARS AND TRUCKS! COME, SEE, SAVE!

- 1937 CHEVROLET 4 door Sport Sedan \$525
- 1933 CHEVROLET 4 door Sedan \$245
- 1936 PONTIAC 4 door Sport Sedan, Heater \$475
- 1938 PLYMOUTH 4 door Sport Sedan, Heater \$595
- 1935 PLYMOUTH 2 door Coach \$265
- 1935 PLYMOUTH 4 door Sedan \$285
- 1936 FORD De Luxe Town Sedan \$325
- 1934 FORD Coach \$195
- 1934 FORD 4 door Sedan \$225
- 1935 FORD Coupe, Heater, Defroster \$250
- 1936 CHEVROLET, Master Town Sedan, Heater, Radio, Defroster \$395
- 1928 BUICK Sedan \$35
- GOOD, SERVICEABLE USED TRUCKS**
- 1937 CHEVROLET Half Ton Panel S. Lic. \$395
- 1937 FORD Half ton Pick-up, S. Lic. \$375
- 1935 DODGE Half ton Pick-up \$175
- 1934 CHEVROLET 1 1/2 ton T. Lic. Canopy Exp. \$295

EXPERT LUBRICATION

With the very latest up-to-the-minute equipment for lubrication work, we have no superior in the thorough and complete methods used in greasing and servicing your car. When you leave us take care of this matter you can rest easy—knowing that the job has been done thoroughly and well. After all, the life of your car depends to a great extent on the thoroughness of its lubrication.

MAIN STREET GARAGE

CARROLLTOWN, PENNA.

SPECIALS Free for OCTAGON COUPONS

COLORFUL CANNON DISH TOWELS 3 for 50 Coupons

STURDY ALUMINUM POT and COVER 100 Coupons

JOHN R. EASLY SPANGLER, PENNA.

J. EDW. STEVENS FUNERAL DIRECTOR

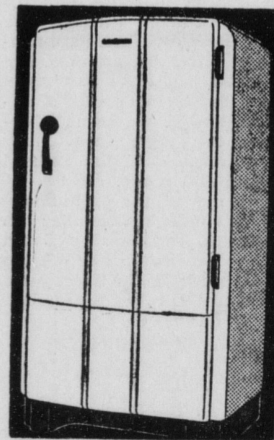
KNOWN BY SERVICE

PHONE SERVICE, Day 31-M., Night 31-J.

PERFECT FOOD PROTECTION

Is a Real Bargain When All It Costs You Is a Few Cents a Day

Your family needs the health protection of safe foods. You don't have to get along with inadequate food protection while you save up money for a new electric refrigerator. You can have all the beauty, convenience and health protection of electric refrigeration and let the refrigerator pay for itself at the same time.



PENNSYLVANIA EDISON COMPANY

No Other Dollar Buys As Much As the Dollar You Spend For Public Utility Service.