

LORETTO ESTATE OF SCHWAB WILL BE PUT ON SALE

Immergrun, the Loretto Estate of Charles M. Schwab, will be closed by the Chairman of the Board of the Bethlehem Steel Corporation and placed on the market. It is also stated that Mr. Schwab will not return to Immergrun to live even before it is sold. The decision was reached by the steel magnate following the death of his wife in New York, Wednesday, January 11th.

The property was owned by Mrs. Schwab, who in her will, left it to her husband for use or disposal during his lifetime. In the event Mr. Schwab does not sell the estate which consists of 990 acres and 18 houses, including the mansion, it would revert to other heirs of Mrs. Schwab on the death of Mr. Schwab. The estate, including the mansion of 45 rooms, represents an estimated investment of \$3,500,000. The

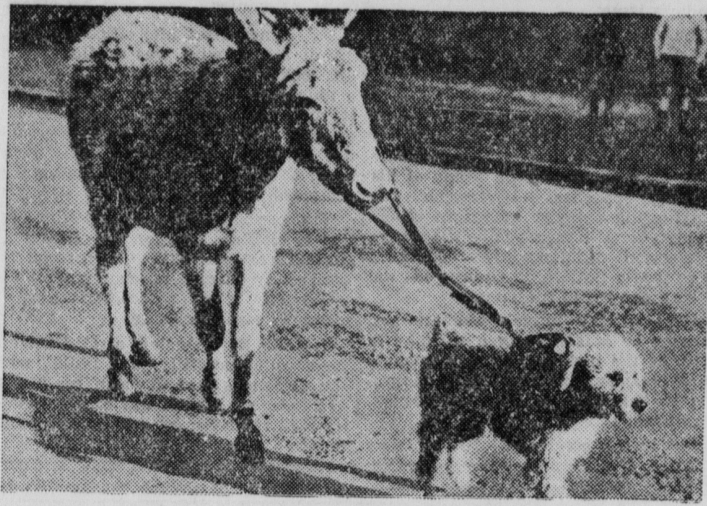
main house was completed in 1919 and Mr. and Mrs. Schwab lived there during the warm months.

Decision to close and dispose of the estate will mean dismissal of 70 employees, who work on the farm. Some of these, it is said, will be dismissed on February 1st, while the others will be discharged as soon as feasible.

Of the total acreage, 395 acres are located in Loretto Borough and the remaining 595 acres in Allegheny township. The total assessed valuation of the property for county purposes is \$343,280 of which \$287,540 is the valuation of the Loretto portion and \$55,740 the valuation of the property in Allegheny township.

Mr. Schwab will, however, visit in Cambria county in the future as he is vitally interested in the Cambria plant of Bethlehem Steel and retains a sentimental interest in the Cambria County Fair Association in which he has invested many thousands of dollars. The steel man will retain his New York home, it is said.

Pooch Guides Donkey in Daily Jaunt



Sandy, canine pet of a Margate, England, contractor, is a firm friend of the seaside donkeys, three of which are kept at local stables during their winter vacation. Here he is taking one of his friends out for a walk about the neighboring streets. A dependable pooch, Sandy is much in demand for donkey constitutionalists.

MACHINE CHARTS FAULTY SPEECH

State College, Pa. — Dr. Herbert Koepf-Baker, head of Pennsylvania State College's speech clinic, has invented a machine designed to record accurately "the mechanism of speech."

The device, which Dr. Koepf-Baker calls an "electrical phono-kinesigraph," or "sound-movement-writer," is capable of tracing graphically the spasms of stutters and stammerers and the faulty tongue movements of lispers, and is said by the inventor to be very useful in aiding deaf mutes in acquiring speech.

Dr. Koepf-Baker said the machine can also be used to "explore the articulatory vagaries" of racial groups. For instance, he said, it will show why the Japanese find "L" elusive and over-stresses "S"; how the French produce their characteristic "R," and why the Celt's speech is "fuzzy," rather than clipped, like the Englishman's.

Explaining that other instruments for recording speech movements antedate his invention, Dr. Koepf-Baker said that they were all cumbersome and inaccurate, and that his device—the first operated by electricity—is the only one known to be accurate and practicable.

He said it will make possible for the first time collection of precise data on the movements of the various articulatory organs—the lips, teeth, gum ridges and soft palate; thus aiding "in prescribing measures to cure speech faults."

The machine consists of minute electrical contacts, wires the size of human hairs, current-relaying vacuum tubes, a graphic device and a chronograph.

After connecting the tiny electrodes to the parts to be studied in the subject's mouth, an electric current below the level of feeling is introduced into

the body. As he talks, contacts are made by the electrodes, actuating pens which trace the movements on recording tape. The chronograph measures off lengths of the tape in fractions of a second.

The inventor explained that the measuring device is important because "timing" has a great bearing on speech characteristics.

He said the machine can be adapted for speech education of deaf mutes by substituting lights for pens and recording tape. When a subject is articulating correctly, he explained, the lights conform to a pre-determined pattern; but, when he blunders, the pattern is broken and, by the nature of the break, detects cause of the error.

EXECUTOR'S NOTICE.

In the Estate of Thomas J. Durbin, late of the Township of Clearfield, County of Cambria and State of Pennsylvania, deceased.

Notice is hereby given that Letters Testamentary in the Estate of the above named decedent have been granted to the undersigned. All persons indebted to said Estate are requested to make payment, and those having claims or demands against the same will make them known without delay to the undersigned.

GORDON DURBIN, GERTRUDE DURBIN, Executors of the Last Will and Testament of Thomas J. Durbin, deceased. Patton, Pa., R. D. Shettig & Swope, Attorneys, Ebensburg, Pa.

CONTENTED PRISONER



Detroit, Mich., police recently arrested a good natured, bearded and ragged old man on a charge of vagrancy. When the judge asked him his name, he replied that it was plain John Doe. He was found sleeping peacefully in the cold on a sidewalk, and is happy with all his present attention.

MACHINE HAS ELIMINATED 240 OCCUPATIONS, SAVANT AVERS

Harrisburg—The Machine Age has driven 240 occupations "virtually out of existence" since 1900, a nationally known educator told Pennsylvania college presidents last week.

"One fourth of our people are now working at occupations which either did not exist or only in a rudimentary form at the turn of the century," Dr. Arthur E. Bestor, president of the Chautauqua Institution, said at the annual meeting of the Pennsylvania College Presidents Association. He did not enumerate the forgotten occupations.

Dr. Bestor, who is chairman of the Board of Trustees of Town Hall, New York City, made the statement in emphasizing that educational needs are constantly changing.

"Most of the factors which have made the modern world have been operating wholly or largely in the past 20 years," he said.

"Much of our new educational effort is directed toward the solution of problems due to the industrialization of our civilization and the mechanization of our industry.

"We have learned that continual adjustment, ability to change one's occupation in middle life, adaptability and versatility are the results that we must achieve through training, if we are to keep up with the procession in this modern world."

Dr. Bestor said that 27 million persons, or nearly one-sixth of the nation's population, are participating in adult education activities.

ORGANIZE BOROUGHS OF CAMBRIA COUNTY TO PROTECT RIGHTS

Leslie L. Chamberlain, president of Dale Borough Council, last week was elected president of the newly formed permanent organization of Cambria County Boroughs at a meeting in Wilmore. His term will extend to April, 1940. Other officers are:

Charles Wilson, president of Barnesboro Council, first vice president; G. Martin Fox of Southmont Council, second vice president; Frank S. Rhoades, secretary of Dale Council, secretary; and Leander G. Hornick, president of Geistown Borough Council, treasurer. Attorney Howard W. Stull, Dale Borough solicitor, was named solicitor for the association and the executive committee consists of Burgess Lyman B. Angus of Southmont, Councilman Joseph Hines of Cresson and Councilman W. G. Wright of Cone-maugh, together with the officers.

Objects of the association are to study and investigate problems affecting the welfare, economy, management and government of boroughs and to protect and safeguard rights and franchises of boroughs. The group will propose legislation beneficial to boroughs and plans to affiliate with the state association. Meetings will be held quarterly, the next session being scheduled April 18 in the Geistown Fire Hall.

A new filler material removes iron from water whether in soluble or insoluble form. It operates catalytically, is efficient to 0.2 parts per million.

Calling All MISSING PERSONS

THE NEW DIRECTORY WILL SOON GO TO PRESS!

When people have good news for you—a new job... a business opportunity... a party they'd like to have you attend—they expect to find you in the telephone directory. If your name is missing you may lose out.

Now is the time to order your telephone and get your name and number in the new directory. If you have a telephone, please let us know immediately if you wish any changes made in your present listing. Call the Bell Telephone Business Office.

THE BELL TELEPHONE COMPANY OF PENNSYLVANIA

SEARS FEBRUARY FURNITURE SALE!

Not \$79.50 THE PRICE IT LOOKS BUT ONLY \$48.88

Not \$69.50 THE PRICE YOU'D GLADLY PAY

Not Even \$59.50 THE PRICE YOU'D CALL AMAZING

THE BEST BEDROOM SUITE BUY OF THE YEAR!

So sensational a value that no words or pictures can give you the true story! Only by seeing it's remarkable beauty, inspecting it's exceptional construction, can you appreciate what a super-bargain it is at this all-time low price! The smart, modern styling, the new waterfall fronts, put it way out of the \$48.88 class! Consider, too that it's genuine walnut veneers, richly enhanced with marquetry inlays. All pieces are generously sized; the dust-proof top drawers, for instance, are 16 inches deep. Fine oak interiors. Bed, chest, choice of vanity or dresser.

AND A HUNDRED OTHER VALUES JUST AS GOOD AT

SEARS, ROEBUCK AND CO.

JOHNSTOWN INDIANA

KEYSTONE'S SHARE OF AAA FUNDS BARED

Washington—Pennsylvania has received \$580,801 of the \$247,761,653 that the Agricultural Adjustment Administration expended from July 1 through December 31, 1938, including payments to growers participating in crop control programs.

The report said the disbursements included \$114,151,196 in price-adjust-

ment payments to cotton growers and \$23,996,798 in benefit payments to cane and beet sugar producers.

Administrative outlays, exclusive of county AAA committees, aggregated \$10,163,580. Of this \$6,889,428 was for salaries.

Advertising in the Union Press-Courier brings you an investment well worth while for the small amount it costs you.

AMERICAN STORES CO. Jan. 26 1939.

Reduce Your Food Costs!

OUR MARKETS BRING YOU QUALITY FOODS AT ROCK BOTTOM PRICES!

SUGAR	FINE CANE GRANULATED	25-lb Paper Bag	\$1.14
BETTER KERNEL CORN		No. 2 Can	10c
PANCAKE OR BUCKWHEAT FLOUR		20 oz. pkg.	5c
HURFF'S COOKED SPAGHETTI		1 1/2 oz. can	5c
TENDER CUT RED BEETS		No. 2 can	5c
DOMESTIC TOMATO PASTE		6 oz. can	5c
FANCY SANTA CLARA PRUNES		lb.	5c
GOLDEN KRUST BREAD		2 Sliced Loaves	9c
Coffee	Banner Day Blend; "heat-flo" roasted	3 LB. Bag	35c
FINE QUALITY OLEO		2 Pounds For	17c
MACARONI OR SPAGHETTI		2 8-oz. pkgs.	9c
JELLO OR ROYAL DESSERT		4 pkgs. for	19c
STRIKE ANYWHERE MATCHES		6 large pkgs.	19c
KING MIDAS EGG NOODLES		2 large pkgs.	19c
PRIM BRAND PASTRY FLOUR		5-lb. bag	12c
QUALITY TABLE SYRUP		No. 1 1/2 Can	8c
KIDNEY BEANS	Joan of Arc	4 No. 2 Cans	25c
PANCAKE FLOUR	Aunt Jemima	2 20 oz. pkgs.	19c
CAMPBELL'S TOMATO SOUP		3 tall cans	20c
ALASKA PINK SALMON		2 tall cans	19c
LIFEBUOY, LUX, PALMOLIVE		3 cakes for	17c
RINSO OR OXYDOL GRAN. SOAP		1 lb. pkg.	18c
OCTAGON LAUNDRY SOAP		10 giant bars	36c
QUALITY EVAP MILK		10 TALL CANS	54c
FLOUR	Pillsbury's Best	24-lb sack	75c

QUALITY MEATS!

Fresh Pork Loins

Rib	Whole or L.B.	Loins	15c
Ends	Half Loins	Loins	17c
L.B.	Whole or Shank Half	Loins	19c

LEGS OF LAMB "Wilson's Certified" POUND 25c

SWIFT'S PREMIUM OR ARMOUR'S STAR Hams lb. 25c

LEAN SMOKED PICNIC SHOULDERS	lb.	15c
LAKEVIEW SLICED BACON	2 1/2-lb pkgs	29c
TENDER, SLICED BEEF LIVER	lb.	17c
FRESHLY MADE JUMBO BOLOGNA	lb	15c

SEA FOOD

STEWING OYSTERS	pint	19c
FISH FILLETS	lb.	7c
SEA WHITINGS	6 lbs.	25c

SWEET, JUICY FLORIDA Oranges, Generous Size 2 Doz. 25c

TANGERINES Sweet, Juicy, Easy to peel, Dozen 5c

GRAPEFRUIT Heavy With Sparkling Juice 6 For 15c

FANCY APPLES, Rome Beauties or Stayman Winesaps, 6 lbs. for 25c

CRISP, FRESH TENDER CELERY, 3 stalks for 10c

TURNIPS, PARSNIPS, or CARROTS, 3 lbs. 10c

NEW TENDER GREEN CABBAGE, 3 lbs. 10c