

REG'LAR FELLERS

Seeing The World From An Easy Chair

By GENE BYRNES



WIND UP OF THE DECEMBER COURT

Rapid Work of Judges and Juries Clears Calendar for Last Session of Year

Following are some of the more interesting cases of the finish of December Criminal Court at Ebensburg, last week:

Milton W. Graham, of Johnstown charged with fraudulent conversion, was found guilty by a jury in Judge Evans' court. The defendant was directed to pay one-half of the costs and the prosecutor, Gus Pfeffer, the other half. This prosecution involved the alleged theft of a brief case, photograph kit, receipt books and a cross-section radiator, total value of \$38.

John Casuba and Annie Casuba, of Nanty-Glo, convicted by a jury in Judge Evans' court Thursday afternoon on a charge of cruelty to minors, were sentenced Friday morning to jointly pay the costs and a fine of \$50. John Casuba was sentenced to serve not less than five nor more than 30 days and his wife was sentenced to serve not less than 10 nor more than 30 days in the county jail.

Andy O'Leary, of Portage, charged with aggravated assault and battery was found guilty to simple assault and recommended to the mercy of the court.

Frank Gillish, of Park Hill, charged with larceny and receiving stolen goods was discharged upon direction of Judge McKenrick and the costs were placed upon the county. The defendant was alleged to have stolen a calf.

Frank Mardis, of Morrellville, Johnstown, charged with uttering, was found not guilty and the costs were equally divided between the defendant and the prosecutor, David Schwartz, of Johnstown.

Herbert Freburn, of Johnstown charged with assault and battery, was found guilty and recommended to the mercy of the Court by a jury in Judge Reed's court Friday morning. The defendant was sentenced to pay the costs. The case grew out of a fight between Freburn and another boy by the name of Cohaugh, both students at the Johnstown High School.

Joseph Lucasabde and Basil Godiciz, both of Portage, charged with assault and battery, were found not guilty but directed to pay one-half of the costs, Henry Seidlitzki, also of Portage, The Commonwealth alleged the defendants had attacked the defendant.

Adam Keffer, Scott Beam and D. H. Weimer, Road Supervisors of Upper Yoder Township charged with nuisance on information of Constable J. A. Delozier, of the same township, were found not guilty by direction of President Judge John E. Evans in Criminal Court Thursday afternoon. The costs were placed on the county.

The road in question is a connecting link between the brick road leading up to Roxburg and the concrete highway at the old Roundhouse in Bensereek.

ENDS MONTHS OF "INDIGESTION" IN SURPRISING WAY

There's good news for all stomach sufferers in the sensation being created by a simple discovery, due to the quick, easy way it relieves so-called "indigestion," and its effects, such as gas, bloating, belching, headaches, nausea, heartburn, etc.

"Pape's Diapepsin," as it is called, is eaten like candy—and is just as harmless. No narcotics or pain-killers in it. Nothing habit-forming. No sooner swallowed than pain stops; normal digestion is restored.

Thousands are so enthusiastic over the results they are securing that they simply have to tell their experiences to help others. Here's what attractive Mrs. Grace Hall, of Dear Way, So. Boston, Mass., says:

"I suffered from nervous indigestion for many months until I couldn't sleep right and nothing agreed with me. I would have gas on my stomach, sour stomach, heartburn, and would bloat badly after every meal.

"I tried a lot of medicines but nothing helped until I heard about Pape's Diapepsin and got some. It ended my trouble in a surprising way."

All druggists sell Pape's Diapepsin; or write "Pape's Diapepsin," Wheeling, W. Va., for a FREE sample box.



HEALTH TALK

FARM CALENDAR

LEPER DISCOVERED LIVING IN ALTOONA

LIMA CASE CONTINUED

PICK PLANTS FOR EFFECT—SINCE PLANT MATERIALS ARE SET OUT FOR PERMANENT EFFECT, CONSIDERATION SHOULD BE GIVEN WHEN THE PLANTS ARE SELECTED TO THE POSSIBLE HEIGHT AND MATURITY.

GIVE COWS VARIETY OF GRAINS

FEED SOWS CAREFULLY—BROOD SOWS SHOULD RECEIVE APPROXIMATELY ONE-HALF A POUND OF GRAIN A DAY DURING THE GESTATION PERIOD.

BUTCHER BEATS AT HOME—INTEREST IN THE SLAUGHTERING, CUTTING AND CURING OF PORK, BEEF AND MUTTON AT THIS TIME OF THE YEAR, CARELESSNESS AND THOUGHTLESSNESS REGARDING THIS MENACE APPEAR TO BE MORE WIDESPREAD THAN THEY SHOULD BE.

USE OF TRACTORS GROWS—DURING THE 10-YEAR PERIOD, 1918-28, THE NUMBER OF FARM TRACTORS IN THIS STATE INCREASED FROM 5000 TO 35,000.

PICK PLANTS FOR EFFECT—SINCE PLANT MATERIALS ARE SET OUT FOR PERMANENT EFFECT, CONSIDERATION SHOULD BE GIVEN WHEN THE PLANTS ARE SELECTED TO THE POSSIBLE HEIGHT AND MATURITY.

GIVE COWS VARIETY OF GRAINS

FEED SOWS CAREFULLY—BROOD SOWS SHOULD RECEIVE APPROXIMATELY ONE-HALF A POUND OF GRAIN A DAY DURING THE GESTATION PERIOD.

BUTCHER BEATS AT HOME—INTEREST IN THE SLAUGHTERING, CUTTING AND CURING OF PORK, BEEF AND MUTTON AT THIS TIME OF THE YEAR, CARELESSNESS AND THOUGHTLESSNESS REGARDING THIS MENACE APPEAR TO BE MORE WIDESPREAD THAN THEY SHOULD BE.

USE OF TRACTORS GROWS—DURING THE 10-YEAR PERIOD, 1918-28, THE NUMBER OF FARM TRACTORS IN THIS STATE INCREASED FROM 5000 TO 35,000.

PICK PLANTS FOR EFFECT—SINCE PLANT MATERIALS ARE SET OUT FOR PERMANENT EFFECT, CONSIDERATION SHOULD BE GIVEN WHEN THE PLANTS ARE SELECTED TO THE POSSIBLE HEIGHT AND MATURITY.

GIVE COWS VARIETY OF GRAINS

FEED SOWS CAREFULLY—BROOD SOWS SHOULD RECEIVE APPROXIMATELY ONE-HALF A POUND OF GRAIN A DAY DURING THE GESTATION PERIOD.

BUTCHER BEATS AT HOME—INTEREST IN THE SLAUGHTERING, CUTTING AND CURING OF PORK, BEEF AND MUTTON AT THIS TIME OF THE YEAR, CARELESSNESS AND THOUGHTLESSNESS REGARDING THIS MENACE APPEAR TO BE MORE WIDESPREAD THAN THEY SHOULD BE.

USE OF TRACTORS GROWS—DURING THE 10-YEAR PERIOD, 1918-28, THE NUMBER OF FARM TRACTORS IN THIS STATE INCREASED FROM 5000 TO 35,000.

PICK PLANTS FOR EFFECT—SINCE PLANT MATERIALS ARE SET OUT FOR PERMANENT EFFECT, CONSIDERATION SHOULD BE GIVEN WHEN THE PLANTS ARE SELECTED TO THE POSSIBLE HEIGHT AND MATURITY.

GIVE COWS VARIETY OF GRAINS

FEED SOWS CAREFULLY—BROOD SOWS SHOULD RECEIVE APPROXIMATELY ONE-HALF A POUND OF GRAIN A DAY DURING THE GESTATION PERIOD.

BUTCHER BEATS AT HOME—INTEREST IN THE SLAUGHTERING, CUTTING AND CURING OF PORK, BEEF AND MUTTON AT THIS TIME OF THE YEAR, CARELESSNESS AND THOUGHTLESSNESS REGARDING THIS MENACE APPEAR TO BE MORE WIDESPREAD THAN THEY SHOULD BE.

USE OF TRACTORS GROWS—DURING THE 10-YEAR PERIOD, 1918-28, THE NUMBER OF FARM TRACTORS IN THIS STATE INCREASED FROM 5000 TO 35,000.

HEALTH TALK

FARM CALENDAR

LEPER DISCOVERED LIVING IN ALTOONA

LIMA CASE CONTINUED

PICK PLANTS FOR EFFECT—SINCE PLANT MATERIALS ARE SET OUT FOR PERMANENT EFFECT, CONSIDERATION SHOULD BE GIVEN WHEN THE PLANTS ARE SELECTED TO THE POSSIBLE HEIGHT AND MATURITY.

GIVE COWS VARIETY OF GRAINS

FEED SOWS CAREFULLY—BROOD SOWS SHOULD RECEIVE APPROXIMATELY ONE-HALF A POUND OF GRAIN A DAY DURING THE GESTATION PERIOD.

BUTCHER BEATS AT HOME—INTEREST IN THE SLAUGHTERING, CUTTING AND CURING OF PORK, BEEF AND MUTTON AT THIS TIME OF THE YEAR, CARELESSNESS AND THOUGHTLESSNESS REGARDING THIS MENACE APPEAR TO BE MORE WIDESPREAD THAN THEY SHOULD BE.

USE OF TRACTORS GROWS—DURING THE 10-YEAR PERIOD, 1918-28, THE NUMBER OF FARM TRACTORS IN THIS STATE INCREASED FROM 5000 TO 35,000.

PICK PLANTS FOR EFFECT—SINCE PLANT MATERIALS ARE SET OUT FOR PERMANENT EFFECT, CONSIDERATION SHOULD BE GIVEN WHEN THE PLANTS ARE SELECTED TO THE POSSIBLE HEIGHT AND MATURITY.

GIVE COWS VARIETY OF GRAINS

FEED SOWS CAREFULLY—BROOD SOWS SHOULD RECEIVE APPROXIMATELY ONE-HALF A POUND OF GRAIN A DAY DURING THE GESTATION PERIOD.

BUTCHER BEATS AT HOME—INTEREST IN THE SLAUGHTERING, CUTTING AND CURING OF PORK, BEEF AND MUTTON AT THIS TIME OF THE YEAR, CARELESSNESS AND THOUGHTLESSNESS REGARDING THIS MENACE APPEAR TO BE MORE WIDESPREAD THAN THEY SHOULD BE.

USE OF TRACTORS GROWS—DURING THE 10-YEAR PERIOD, 1918-28, THE NUMBER OF FARM TRACTORS IN THIS STATE INCREASED FROM 5000 TO 35,000.

PICK PLANTS FOR EFFECT—SINCE PLANT MATERIALS ARE SET OUT FOR PERMANENT EFFECT, CONSIDERATION SHOULD BE GIVEN WHEN THE PLANTS ARE SELECTED TO THE POSSIBLE HEIGHT AND MATURITY.

GIVE COWS VARIETY OF GRAINS

FEED SOWS CAREFULLY—BROOD SOWS SHOULD RECEIVE APPROXIMATELY ONE-HALF A POUND OF GRAIN A DAY DURING THE GESTATION PERIOD.

BUTCHER BEATS AT HOME—INTEREST IN THE SLAUGHTERING, CUTTING AND CURING OF PORK, BEEF AND MUTTON AT THIS TIME OF THE YEAR, CARELESSNESS AND THOUGHTLESSNESS REGARDING THIS MENACE APPEAR TO BE MORE WIDESPREAD THAN THEY SHOULD BE.

USE OF TRACTORS GROWS—DURING THE 10-YEAR PERIOD, 1918-28, THE NUMBER OF FARM TRACTORS IN THIS STATE INCREASED FROM 5000 TO 35,000.

PICK PLANTS FOR EFFECT—SINCE PLANT MATERIALS ARE SET OUT FOR PERMANENT EFFECT, CONSIDERATION SHOULD BE GIVEN WHEN THE PLANTS ARE SELECTED TO THE POSSIBLE HEIGHT AND MATURITY.

GIVE COWS VARIETY OF GRAINS

FEED SOWS CAREFULLY—BROOD SOWS SHOULD RECEIVE APPROXIMATELY ONE-HALF A POUND OF GRAIN A DAY DURING THE GESTATION PERIOD.

BUTCHER BEATS AT HOME—INTEREST IN THE SLAUGHTERING, CUTTING AND CURING OF PORK, BEEF AND MUTTON AT THIS TIME OF THE YEAR, CARELESSNESS AND THOUGHTLESSNESS REGARDING THIS MENACE APPEAR TO BE MORE WIDESPREAD THAN THEY SHOULD BE.

USE OF TRACTORS GROWS—DURING THE 10-YEAR PERIOD, 1918-28, THE NUMBER OF FARM TRACTORS IN THIS STATE INCREASED FROM 5000 TO 35,000.

HEALTH TALK

FARM CALENDAR

LEPER DISCOVERED LIVING IN ALTOONA

LIMA CASE CONTINUED

PICK PLANTS FOR EFFECT—SINCE PLANT MATERIALS ARE SET OUT FOR PERMANENT EFFECT, CONSIDERATION SHOULD BE GIVEN WHEN THE PLANTS ARE SELECTED TO THE POSSIBLE HEIGHT AND MATURITY.

GIVE COWS VARIETY OF GRAINS

FEED SOWS CAREFULLY—BROOD SOWS SHOULD RECEIVE APPROXIMATELY ONE-HALF A POUND OF GRAIN A DAY DURING THE GESTATION PERIOD.

BUTCHER BEATS AT HOME—INTEREST IN THE SLAUGHTERING, CUTTING AND CURING OF PORK, BEEF AND MUTTON AT THIS TIME OF THE YEAR, CARELESSNESS AND THOUGHTLESSNESS REGARDING THIS MENACE APPEAR TO BE MORE WIDESPREAD THAN THEY SHOULD BE.

USE OF TRACTORS GROWS—DURING THE 10-YEAR PERIOD, 1918-28, THE NUMBER OF FARM TRACTORS IN THIS STATE INCREASED FROM 5000 TO 35,000.

PICK PLANTS FOR EFFECT—SINCE PLANT MATERIALS ARE SET OUT FOR PERMANENT EFFECT, CONSIDERATION SHOULD BE GIVEN WHEN THE PLANTS ARE SELECTED TO THE POSSIBLE HEIGHT AND MATURITY.

GIVE COWS VARIETY OF GRAINS

FEED SOWS CAREFULLY—BROOD SOWS SHOULD RECEIVE APPROXIMATELY ONE-HALF A POUND OF GRAIN A DAY DURING THE GESTATION PERIOD.

BUTCHER BEATS AT HOME—INTEREST IN THE SLAUGHTERING, CUTTING AND CURING OF PORK, BEEF AND MUTTON AT THIS TIME OF THE YEAR, CARELESSNESS AND THOUGHTLESSNESS REGARDING THIS MENACE APPEAR TO BE MORE WIDESPREAD THAN THEY SHOULD BE.

USE OF TRACTORS GROWS—DURING THE 10-YEAR PERIOD, 1918-28, THE NUMBER OF FARM TRACTORS IN THIS STATE INCREASED FROM 5000 TO 35,000.

PICK PLANTS FOR EFFECT—SINCE PLANT MATERIALS ARE SET OUT FOR PERMANENT EFFECT, CONSIDERATION SHOULD BE GIVEN WHEN THE PLANTS ARE SELECTED TO THE POSSIBLE HEIGHT AND MATURITY.

GIVE COWS VARIETY OF GRAINS

FEED SOWS CAREFULLY—BROOD SOWS SHOULD RECEIVE APPROXIMATELY ONE-HALF A POUND OF GRAIN A DAY DURING THE GESTATION PERIOD.

BUTCHER BEATS AT HOME—INTEREST IN THE SLAUGHTERING, CUTTING AND CURING OF PORK, BEEF AND MUTTON AT THIS TIME OF THE YEAR, CARELESSNESS AND THOUGHTLESSNESS REGARDING THIS MENACE APPEAR TO BE MORE WIDESPREAD THAN THEY SHOULD BE.

USE OF TRACTORS GROWS—DURING THE 10-YEAR PERIOD, 1918-28, THE NUMBER OF FARM TRACTORS IN THIS STATE INCREASED FROM 5000 TO 35,000.

PICK PLANTS FOR EFFECT—SINCE PLANT MATERIALS ARE SET OUT FOR PERMANENT EFFECT, CONSIDERATION SHOULD BE GIVEN WHEN THE PLANTS ARE SELECTED TO THE POSSIBLE HEIGHT AND MATURITY.

GIVE COWS VARIETY OF GRAINS

FEED SOWS CAREFULLY—BROOD SOWS SHOULD RECEIVE APPROXIMATELY ONE-HALF A POUND OF GRAIN A DAY DURING THE GESTATION PERIOD.

BUTCHER BEATS AT HOME—INTEREST IN THE SLAUGHTERING, CUTTING AND CURING OF PORK, BEEF AND MUTTON AT THIS TIME OF THE YEAR, CARELESSNESS AND THOUGHTLESSNESS REGARDING THIS MENACE APPEAR TO BE MORE WIDESPREAD THAN THEY SHOULD BE.

USE OF TRACTORS GROWS—DURING THE 10-YEAR PERIOD, 1918-28, THE NUMBER OF FARM TRACTORS IN THIS STATE INCREASED FROM 5000 TO 35,000.

HEALTH TALK

FARM CALENDAR

LEPER DISCOVERED LIVING IN ALTOONA

LIMA CASE CONTINUED

PICK PLANTS FOR EFFECT—SINCE PLANT MATERIALS ARE SET OUT FOR PERMANENT EFFECT, CONSIDERATION SHOULD BE GIVEN WHEN THE PLANTS ARE SELECTED TO THE POSSIBLE HEIGHT AND MATURITY.

GIVE COWS VARIETY OF GRAINS

FEED SOWS CAREFULLY—BROOD SOWS SHOULD RECEIVE APPROXIMATELY ONE-HALF A POUND OF GRAIN A DAY DURING THE GESTATION PERIOD.

BUTCHER BEATS AT HOME—INTEREST IN THE SLAUGHTERING, CUTTING AND CURING OF PORK, BEEF AND MUTTON AT THIS TIME OF THE YEAR, CARELESSNESS AND THOUGHTLESSNESS REGARDING THIS MENACE APPEAR TO BE MORE WIDESPREAD THAN THEY SHOULD BE.

USE OF TRACTORS GROWS—DURING THE 10-YEAR PERIOD, 1918-28, THE NUMBER OF FARM TRACTORS IN THIS STATE INCREASED FROM 5000 TO 35,000.

PICK PLANTS FOR EFFECT—SINCE PLANT MATERIALS ARE SET OUT FOR PERMANENT EFFECT, CONSIDERATION SHOULD BE GIVEN WHEN THE PLANTS ARE SELECTED TO THE POSSIBLE HEIGHT AND MATURITY.

GIVE COWS VARIETY OF GRAINS

FEED SOWS CAREFULLY—BROOD SOWS SHOULD RECEIVE APPROXIMATELY ONE-HALF A POUND OF GRAIN A DAY DURING THE GESTATION PERIOD.

BUTCHER BEATS AT HOME—INTEREST IN THE SLAUGHTERING, CUTTING AND CURING OF PORK, BEEF AND MUTTON AT THIS TIME OF THE YEAR, CARELESSNESS AND THOUGHTLESSNESS REGARDING THIS MENACE APPEAR TO BE MORE WIDESPREAD THAN THEY SHOULD BE.

USE OF TRACTORS GROWS—DURING THE 10-YEAR PERIOD, 1918-28, THE NUMBER OF FARM TRACTORS IN THIS STATE INCREASED FROM 5000 TO 35,000.

PICK PLANTS FOR EFFECT—SINCE PLANT MATERIALS ARE SET OUT FOR PERMANENT EFFECT, CONSIDERATION SHOULD BE GIVEN WHEN THE PLANTS ARE SELECTED TO THE POSSIBLE HEIGHT AND MATURITY.

GIVE COWS VARIETY OF GRAINS

FEED SOWS CAREFULLY—BROOD SOWS SHOULD RECEIVE APPROXIMATELY ONE-HALF A POUND OF GRAIN A DAY DURING THE GESTATION PERIOD.

BUTCHER BEATS AT HOME—INTEREST IN THE SLAUGHTERING, CUTTING AND CURING OF PORK, BEEF AND MUTTON AT THIS TIME OF THE YEAR, CARELESSNESS AND THOUGHTLESSNESS REGARDING THIS MENACE APPEAR TO BE MORE WIDESPREAD THAN THEY SHOULD BE.

USE OF TRACTORS GROWS—DURING THE 10-YEAR PERIOD, 1918-28, THE NUMBER OF FARM TRACTORS IN THIS STATE INCREASED FROM 5000 TO 35,000.

PICK PLANTS FOR EFFECT—SINCE PLANT MATERIALS ARE SET OUT FOR PERMANENT EFFECT, CONSIDERATION SHOULD BE GIVEN WHEN THE PLANTS ARE SELECTED TO THE POSSIBLE HEIGHT AND MATURITY.

GIVE COWS VARIETY OF GRAINS

FEED SOWS CAREFULLY—BROOD SOWS SHOULD RECEIVE APPROXIMATELY ONE-HALF A POUND OF GRAIN A DAY DURING THE GESTATION PERIOD.

BUTCHER BEATS AT HOME—INTEREST IN THE SLAUGHTERING, CUTTING AND CURING OF PORK, BEEF AND MUTTON AT THIS TIME OF THE YEAR, CARELESSNESS AND THOUGHTLESSNESS REGARDING THIS MENACE APPEAR TO BE MORE WIDESPREAD THAN THEY SHOULD BE.

USE OF TRACTORS GROWS—DURING THE 10-YEAR PERIOD, 1918-28, THE NUMBER OF FARM TRACTORS IN THIS STATE INCREASED FROM 5000 TO 35,000.

WHENEVER YOU NEED READY CASH. COME IN AND LET US EXPLAIN HOW QUICKLY AND CONVENIENTLY WE CAN ARRANGE A LOAN FOR YOU! \$10 TO \$300. 1 DAY OF ALMOST 2 YEARS TO REPAY. \* TERMS TO SUIT YOUR INCOME \* AMERICAN LOAN COMPANY ROOM 308—GRANT BLDG. 1412-11th Ave. PHONE: 2-6962 \* ALTOONA, PA. \*

FREE Valuable Premiums. WITH EVERY PURCHASE OF \$1.00 AND WITH EACH \$1.00 PAID ON ACCOUNT, WE ARE GIVING A FREE CHANCE ON THE FOLLOWING VALUABLE ARTICLES TO BE GIVEN AWAY ON DECEMBER 31st, 1930, AT 9 P.M. FIRST—RADIO, WITH BATTERIES AND TUBES. SECOND—EIGHT DAY MANTEL CLOCK. THIRD—STEVENS' .22 CAL. RIFLE. FOURTH—DOVER ELECTRIC IRON. FIFTH—SET KNIVES AND FORKS. SIXTH—ENAMEL ALARM CLOCK.

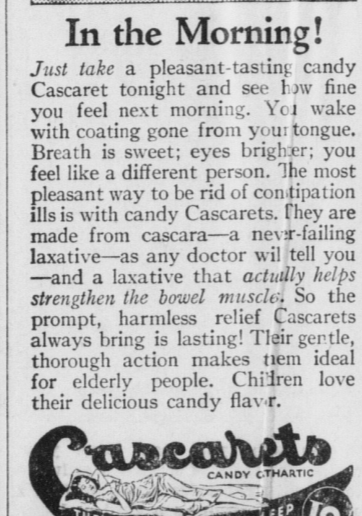
Huber's Hardware PATTON, PA.

The Path to Plenty Is Via This Bank. THE FIRST NATIONAL BANK PATTON, PENNSYLVANIA. CAPITAL \$200,000.00 SURPLUS \$200,000.00 TOTAL RESOURCES OVER \$3,240,000.00. Gen. E. Prindlbe, President; F. E. Farabaugh, Reuel Somerville, James Westrick, P. J. Kelly, Vice Presidents, Frank L. Brown, Cashier; Francis X. Young, Assistant Cashier. A ROLL OF HONOR BANK.

For Christmas and all the Christmases to come. A VIRGIN DIAMOND, never before worn or individually-owned, increasing in value through the years—is an incomparable gift. Of established quality, of guaranteed color and brilliance, in mountings of distinctive craftsmanship, Certified VIRGIN DIAMONDS can be secured in a wide range of standard prices. Tozer Jewelry Co. M. H. GARDNER, Prop. Patton, Penna. VIRGIN DIAMONDS

MOTOR REPAIRING. Bring Your Car Here For Expert Mechanical Service. We pride ourselves on the production of prompt and satisfactory work. Try A Tankful of SUNOCO The motor Gas with all the advantages of Ethyl Gas. Patton Auto Co. Patton, Pa.

HUNTERS! HAVE YOUR DEER HEADS AND OTHER SPECIMENS MOUNTED. Guaranteed Workmanship on Mounts of all kinds. Moth Proof Jobs, Life Like Products. PRICES REASONABLE. GIVE ME A TRIAL. Wilfred Anna Licensed Taxidermist PATTON, R. D. 1, PA.



6 description for HEADACHES remedy known. Tablets. PAINS of moderate and severe character with a HERALDING of a cold. Relief is obtained by habit forming. by name Cascarets. (Cascarets) \$1.00. Sold at G. CO., INC. merville -AT-LAW dg. Patton, Pa. e in The Patton c vice BLE rvice—but shoulders. through serious re- ntion. Mo- parts and u. Co.