

THE PATTON COURIER

Published Every Thursday.

Thos. A. Owens, Editor & Prop.
E. F. Bradley, Associate Editor

Entered in the Post Office at Patton, Pa., as Second Class Mail Matter.

Subscription Rates \$2.00 per year in Advance. Single Copies 5 Cents.

RATE CARD—Legal Notices, \$1.00 per inch, or fraction thereof, for 3 insertions; 50¢ per inch, or fraction thereof, for 4 insertions; 40¢ per inch, or fraction thereof, for 5 insertions; 30¢ per inch, or fraction thereof, for 6 insertions; 25¢ per inch, or fraction thereof, for 7 insertions; 20¢ per inch, or fraction thereof, for 8 insertions; 15¢ per inch, or fraction thereof, for 9 insertions; 10¢ per inch, or fraction thereof, for 10 insertions; 5¢ per inch, or fraction thereof, for 11 insertions; 4¢ per inch, or fraction thereof, for 12 insertions; 3¢ per inch, or fraction thereof, for 13 insertions; 2¢ per inch, or fraction thereof, for 14 insertions; 1¢ per inch, or fraction thereof, for 15 insertions; 5¢ per line, or fraction thereof, for 16 insertions; 4¢ per line, or fraction thereof, for 17 insertions; 3¢ per line, or fraction thereof, for 18 insertions; 2¢ per line, or fraction thereof, for 19 insertions; 1¢ per line, or fraction thereof, for 20 insertions; 5¢ per line, or fraction thereof, for 21 insertions; 4¢ per line, or fraction thereof, for 22 insertions; 3¢ per line, or fraction thereof, for 23 insertions; 2¢ per line, or fraction thereof, for 24 insertions; 1¢ per line, or fraction thereof, for 25 insertions; 5¢ per line, or fraction thereof, for 26 insertions; 4¢ per line, or fraction thereof, for 27 insertions; 3¢ per line, or fraction thereof, for 28 insertions; 2¢ per line, or fraction thereof, for 29 insertions; 1¢ per line, or fraction thereof, for 30 insertions; 5¢ per line, or fraction thereof, for 31 insertions; 4¢ per line, or fraction thereof, for 32 insertions; 3¢ per line, or fraction thereof, for 33 insertions; 2¢ per line, or fraction thereof, for 34 insertions; 1¢ per line, or fraction thereof, for 35 insertions; 5¢ per line, or fraction thereof, for 36 insertions; 4¢ per line, or fraction thereof, for 37 insertions; 3¢ per line, or fraction thereof, for 38 insertions; 2¢ per line, or fraction thereof, for 39 insertions; 1¢ per line, or fraction thereof, for 40 insertions; 5¢ per line, or fraction thereof, for 41 insertions; 4¢ per line, or fraction thereof, for 42 insertions; 3¢ per line, or fraction thereof, for 43 insertions; 2¢ per line, or fraction thereof, for 44 insertions; 1¢ per line, or fraction thereof, for 45 insertions; 5¢ per line, or fraction thereof, for 46 insertions; 4¢ per line, or fraction thereof, for 47 insertions; 3¢ per line, or fraction thereof, for 48 insertions; 2¢ per line, or fraction thereof, for 49 insertions; 1¢ per line, or fraction thereof, for 50 insertions; 5¢ per line, or fraction thereof, for 51 insertions; 4¢ per line, or fraction thereof, for 52 insertions; 3¢ per line, or fraction thereof, for 53 insertions; 2¢ per line, or fraction thereof, for 54 insertions; 1¢ per line, or fraction thereof, for 55 insertions; 5¢ per line, or fraction thereof, for 56 insertions; 4¢ per line, or fraction thereof, for 57 insertions; 3¢ per line, or fraction thereof, for 58 insertions; 2¢ per line, or fraction thereof, for 59 insertions; 1¢ per line, or fraction thereof, for 60 insertions; 5¢ per line, or fraction thereof, for 61 insertions; 4¢ per line, or fraction thereof, for 62 insertions; 3¢ per line, or fraction thereof, for 63 insertions; 2¢ per line, or fraction thereof, for 64 insertions; 1¢ per line, or fraction thereof, for 65 insertions; 5¢ per line, or fraction thereof, for 66 insertions; 4¢ per line, or fraction thereof, for 67 insertions; 3¢ per line, or fraction thereof, for 68 insertions; 2¢ per line, or fraction thereof, for 69 insertions; 1¢ per line, or fraction thereof, for 70 insertions; 5¢ per line, or fraction thereof, for 71 insertions; 4¢ per line, or fraction thereof, for 72 insertions; 3¢ per line, or fraction thereof, for 73 insertions; 2¢ per line, or fraction thereof, for 74 insertions; 1¢ per line, or fraction thereof, for 75 insertions; 5¢ per line, or fraction thereof, for 76 insertions; 4¢ per line, or fraction thereof, for 77 insertions; 3¢ per line, or fraction thereof, for 78 insertions; 2¢ per line, or fraction thereof, for 79 insertions; 1¢ per line, or fraction thereof, for 80 insertions; 5¢ per line, or fraction thereof, for 81 insertions; 4¢ per line, or fraction thereof, for 82 insertions; 3¢ per line, or fraction thereof, for 83 insertions; 2¢ per line, or fraction thereof, for 84 insertions; 1¢ per line, or fraction thereof, for 85 insertions; 5¢ per line, or fraction thereof, for 86 insertions; 4¢ per line, or fraction thereof, for 87 insertions; 3¢ per line, or fraction thereof, for 88 insertions; 2¢ per line, or fraction thereof, for 89 insertions; 1¢ per line, or fraction thereof, for 90 insertions; 5¢ per line, or fraction thereof, for 91 insertions; 4¢ per line, or fraction thereof, for 92 insertions; 3¢ per line, or fraction thereof, for 93 insertions; 2¢ per line, or fraction thereof, for 94 insertions; 1¢ per line, or fraction thereof, for 95 insertions; 5¢ per line, or fraction thereof, for 96 insertions; 4¢ per line, or fraction thereof, for 97 insertions; 3¢ per line, or fraction thereof, for 98 insertions; 2¢ per line, or fraction thereof, for 99 insertions; 1¢ per line, or fraction thereof, for 100 insertions.

CLOUDS AND RAIN.

(By John Connelly.)

In the heart of a continent much of the rain consists of moisture wafted thither by winds from the ocean. If the crops depended only on moisture evaporated from the lands including their lakes and rivers, they would be as scanty as in deserts. However, in the middle of a continent, millions of bushels of grain are grown by means of waters from the oceans a thousand miles away. Practically all of the world's corn depends on summer rains from oceans 500 to 1,500 miles away.

This is not surprising for two reasons—The evaporation from the land is less than from the same area of water, as is evident from the dampness of a sea breeze as compared with the dryness of a land breeze. The area of the oceans is two and a half times that of the lands, and two hundred times that of

all the lakes, rivers, swamps and other bodies of water on the land. If all the lakes in the world should be evaporated they would supply only one-fiftieth of the rain that falls each year on the lands.

As regulators of temperature, even the largest lakes are of little importance compared with oceans. Yet the eastern shores of Lake Michigan and Lake Erie are great regions for grapes and other fruits because the northwest winds from them prevent early frosts. Also in the spring the lakes retain the low temperature of winter longer and thus prevent the fruit trees from blossoming too early and being nipped by the frost.

In the same way Chicago is a much more healthful and more vigorous city because in summer the hottest days are often relieved by lake breezes which blow like a sea breeze in the afternoons. Even a small lake or a broad river has a slight cooling effect on the wind in summer, and a warming effect in the autumn, when the water does not grow cold so fast as the land.

Water Supply Needed.
As people become more civilized, the need of a large water supply steadily increases. It is needed for three main uses, domestic, municipal and industrial. The domestic uses begin with drinking, which demand a half gallon or less per person each day on an average. Cooking requires a larger amount, while washing and bathing demand many gallons per day. To this must be added the water drunk by domestic animals, and that which is used for watering plants, gardens and lawns.

The municipal uses include all that is needed for fire protection, public fountains and drinking places, street sprinkling, and the flushing of sewers. This amount varies from nothing in small villages to many gallons per person in large cities. In the same way the amount of water used for industrial purposes varies from nothing up to a quantity much larger than for domestic and municipal purposes combined. It

includes the water used for engine boilers for condensing steam, and for many special industrial purposes. For all these purposes together, an ordinary town requires from 50 to 150 gallons per person daily. Usually the supply is obtained so easily, by simply turning a faucet, that people do not realize how important it is. They feel the importance, however, when there

PERMANENT WAVING.

Our Perfected process requires less time, less heat and absolutely protects hair from injury by chemicals and over steaming. You will be delighted with the difference if you have not yet had a permanent by our method. Come in any time and confer about your Permanent. Work done by appointment only. We use the perfected Edmond Process—FINCK'S Barber Shop and Beauty Shoppe; Palmer House.

666

is a Prescription for
Colds, Grippe, Flu, Dengue,
Bilious Fever and Malaria.
It is the most speedy remedy
known

BLADDER WEAKNESS

If Bladder Weakness, Getting Up Nights, Backache, Burning or Itching Sensation, leg or groin pains make you feel old, tired, peevish, and worn out why not make the Cystex 48 hour test? Don't get up. Get Cystex today at any drug store. Put it to a 48 hour test. Money back if you don't soon feel like new, full of pep, sleep well, with pains alleviated. Try Cystex today. Only 60c. Fogerty's Drug Store.

J. Edward Stevens

FUNERAL DIRECTOR AND EMBALMER

Phone: Office and Residence

CARROLLTOWN, PENNA.

THINK!

Detroit, Michigan, is the automobile center of the world—it has held this distinction steadily for many years.

A large percentage of Detroit's population are skilled workers who know the real worth of an automobile. They are first to recognize built in value, and to distinguish the real fundamentals of quality which make a car worth the price it sells for.

In May, 1925, a new high record was made when 6,518 Model "T" Ford cars and trucks were sold in Wayne County, (Detroit) Michigan. This record was then considered "THE WONDER OF THE AUTOMOTIVE WORLD." Over 6,000 Ford cars sold in one county in one month!

That was exactly four years ago. Today Detroit's workers are more highly skilled than ever before, due to the searching light of modern progress. They are even quicker than ever to realize THE ONE OUTSTANDING VALUE in today's modern automobile.

Now there is a new record—a Model "A" record in every sense of the word.

In May, 1929, in Wayne County, (Detroit) Michigan, there were sold, at retail in this one month—just passed—

9303

New Ford Cars and Trucks

As Detroit goes, SO GOES THE AUTOMOTIVE WORLD.

You owe it to yourself to investigate the merits of the NEW FORD before purchasing your next car.

FEATURES OF THE NEW FORD CAR

Beautiful low lines. New Transverse Springs.
Choice of colors. Houdaille hydraulic Shock Absorbers.
Remarkable acceleration. Triplel shatter-proof glass windshield.
Smoothness at all speeds, 55 to 65 miles per hour. Economy of operation.
Fully enclosed, silent six-brake system. Reliability and long life.

STOLTZ MOTOR CO.

AUTHORIZED DEALER
PATTON, PA.



THE PATTON COURIER

comes a drought, when the lawns must be allowed to dry up, the taking of is restricted, and some of the industries have to shut down. The quality of a water supply is even more important than its quantity. Every up-to-date employs skilled engineers, not only to determine the best source of water and how it shall be protected from contamination, but also to construct purifying works if necessary, and to test the water continually, to see whether it includes harmful impurities.



Many happy returns!
Congratulations!
Greetings of every kind...

TELEPHONE
...it's friendlier!



Who's Who? Look in the Telephone Directory



See How Much You Can Save

Just think how much pleasure it will afford both you and your wife to have a worth while balance in your savings account with this strong bank. It is an ever ready aid in time of trouble. Why wait? Start an account with us today.

THE FIRST NATIONAL BANK

PATTON, PENNSYLVANIA

CAPITAL \$200,000.00
SURPLUS \$200,000.00
TOTAL RESOURCES OVER \$3,240,000.00
Gen. E. Prindible, President; F. E. Farabaugh, Reuel Somerville, James Westrick, P. J. Kelly, Vice Presidents, Frank L. Brown, Cashier; M. Don Connell, M. S. Larimer, Assistants.
A ROLL OF HONOR BANK

ALTOONA BOOSTER MERCHANTS SAY:

Trade in your home stores first, but come to Booster Stores for the things your home merchants cannot supply.

ALTOONA BOOSTER STORES OFFER UNLIMITED VARIETY IN SUMMER MERCHANDISE!

If you are planning a summer vacation you will be able to secure at Booster Stores everything needed to complete your preparations, and you will have a wide variety from which to make satisfactory selections.

You will also find that Booster Stores have complete assortments of the Needs That Are Required in the Home During the Summer Months.

It is a pleasure to do your summer shopping in Booster Stores where the fair prices and dependable merchandise make it profitable as well.

EVERY WEDNESDAY IS SUBURBAN DAY IN BOOSTER STORES

Plan to shop on Wednesday and take advantage of the Suburban Day offerings.

BOOSTER STORES CLOSE THURSDAY AFTERNOONS DURING JULY AND AUGUST ON ACCOUNT OF EMPLOYEES' HALF HOLIDAYS

PARKING SPACE IN THE BUSINESS DISTRICT. Open Parking Space on Tenth Ave. Enclosed Parking Space at: The Gable Garage, Rear of Eleventh Avenue Building. Penn Alto Garage, 1409 13th Avenue.

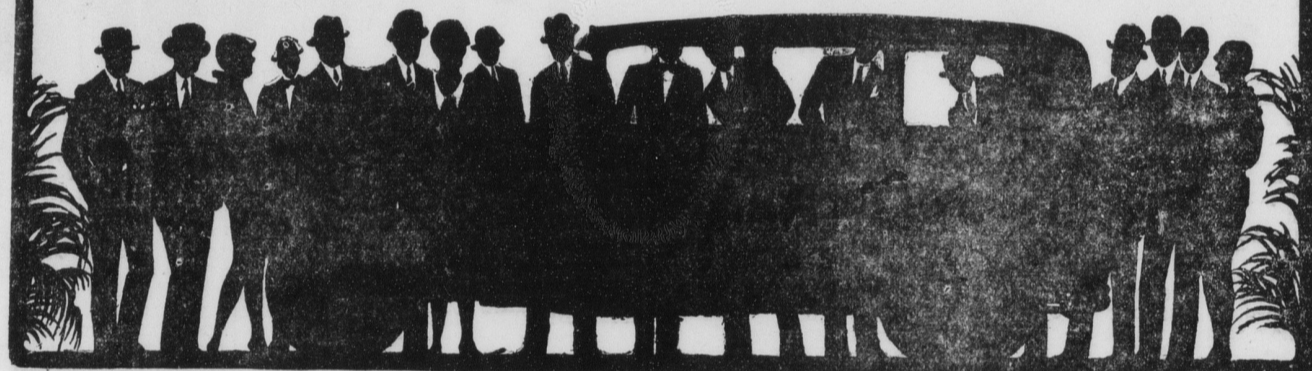
ALTOONA BOOSTER ASSOCIATION.

STRAND THEATRE ALTOONA, PA.

One Week Starting Saturday, July 27th.

"BEHIND THAT CURTAIN" ALL TALKIE ALL STAR 3 VITAPHONE ACTS Movietone News

BE SURE TO SEE IT!



The NEW BUICK

with

3 New Series—3 New Wheelbases—3 New Price Ranges
New Shock Absorbers
New Bodies by Fisher
New Non-Glare Windshield
New Valve-in-Head Engine
New Steering Shock Eliminator
New Controlled Servo Brakes
New Low Prices

AT BUICK DEALERS

SATURDAY
July 27th

PRIMA

NOTICE is hereby given of the Commission, the number of the nominations at County of Cambria, Borough of Patton, nominated by Parties at the election on TUESDAY, SEPT. 2nd, 1929, between the hour of 7:00 P. M.

FOR THE 2 persons for Court. FOR CAMBRIA 1 person for Common Pleas. 1 person for Court. 1 person for 1 person for and House of 2 persons for In each Elec County there s Judge of Elect of Election. In each Borou each Ward of divided into sep there shall be el sessor in each tricts. In each Borou Borough and T nominated candi the terms of w the first Mond where the said be filled at the be held on Tu 1929, and this t tricts where no the offices to be tified to the C as required by FOR THE CITY

3 persons for 2 persons for 2 persons for the first Mond ADAMS 1 School Direct 1 Supervisor. 1 Auditor. 1 Tax Collecto 1 Assessor. ALLEGHEN 2 Justices of t 1 School Direct 1 Supervisor. 1 Auditor. 1 Tax Collecto 1 Assessor. ASHVILL 1 School Direct 1 Auditor. 1 Tax Collecto 1 Burgess. 4 Councilmen. BARNESBO 1 Justice of the 1 School Direct 1 Auditor. 1 Tax Collecto 1 Assessor. BLACKLICH 1 Justice of the 1 School Direct 1 Supervisor. 1 Auditor. 1 Tax Collecto 1 Assessor. BROWNSTO 1 School Direct 1 School Direct 1 School Direct 1 Auditor. 1 Tax Collecto 1 Burgess. 4 Councilmen. CAMBRIA 1 School Direct 1 School Direct 2 School Direct 1 Supervisor. 1 Auditor. 1 Tax Collecto

1 School Direct 1 Supervisor. 1 Auditor. 1 Tax Collecto 1 Assessor. ASHVILL 1 School Direct 1 Auditor. 1 Tax Collecto 1 Burgess. 4 Councilmen. BARNESBO 1 Justice of the 1 School Direct 1 Auditor. 1 Tax Collecto 1 Assessor. BLACKLICH 1 Justice of the 1 School Direct 1 Supervisor. 1 Auditor. 1 Tax Collecto 1 Assessor. BROWNSTO 1 School Direct 1 School Direct 1 School Direct 1 Auditor. 1 Tax Collecto 1 Burgess. 4 Councilmen. CAMBRIA 1 School Direct 1 School Direct 2 School Direct 1 Supervisor. 1 Auditor. 1 Tax Collecto

1 School Direct 1 Supervisor. 1 Auditor. 1 Tax Collecto 1 Assessor. ASHVILL 1 School Direct 1 Auditor. 1 Tax Collecto 1 Burgess. 4 Councilmen. BARNESBO 1 Justice of the 1 School Direct 1 Auditor. 1 Tax Collecto 1 Assessor. BLACKLICH 1 Justice of the 1 School Direct 1 Supervisor. 1 Auditor. 1 Tax Collecto 1 Assessor. BROWNSTO 1 School Direct 1 School Direct 1 School Direct 1 Auditor. 1 Tax Collecto 1 Burgess. 4 Councilmen. CAMBRIA 1 School Direct 1 School Direct 2 School Direct 1 Supervisor. 1 Auditor. 1 Tax Collecto

1 School Direct 1 Supervisor. 1 Auditor. 1 Tax Collecto 1 Assessor. ASHVILL 1 School Direct 1 Auditor. 1 Tax Collecto 1 Burgess. 4 Councilmen. BARNESBO 1 Justice of the 1 School Direct 1 Auditor. 1 Tax Collecto 1 Assessor. BLACKLICH 1 Justice of the 1 School Direct 1 Supervisor. 1 Auditor. 1 Tax Collecto 1 Assessor. BROWNSTO 1 School Direct 1 School Direct 1 School Direct 1 Auditor. 1 Tax Collecto 1 Burgess. 4 Councilmen. CAMBRIA 1 School Direct 1 School Direct 2 School Direct 1 Supervisor. 1 Auditor. 1 Tax Collecto

1 School Direct 1 Supervisor. 1 Auditor. 1 Tax Collecto 1 Assessor. ASHVILL 1 School Direct 1 Auditor. 1 Tax Collecto 1 Burgess. 4 Councilmen. BARNESBO 1 Justice of the 1 School Direct 1 Auditor. 1 Tax Collecto 1 Assessor. BLACKLICH 1 Justice of the 1 School Direct 1 Supervisor. 1 Auditor. 1 Tax Collecto 1 Assessor. BROWNSTO 1 School Direct 1 School Direct 1 School Direct 1 Auditor. 1 Tax Collecto 1 Burgess. 4 Councilmen. CAMBRIA 1 School Direct 1 School Direct 2 School Direct 1 Supervisor. 1 Auditor. 1 Tax Collecto

1 School Direct 1 Supervisor. 1 Auditor. 1 Tax Collecto 1 Assessor. ASHVILL 1 School Direct 1 Auditor. 1 Tax Collecto 1 Burgess. 4 Councilmen. BARNESBO 1 Justice of the 1 School Direct 1 Auditor. 1 Tax Collecto 1 Assessor. BLACKLICH 1 Justice of the 1 School Direct 1 Supervisor. 1 Auditor. 1 Tax Collecto 1 Assessor. BROWNSTO 1 School Direct 1 School Direct 1 School Direct 1 Auditor. 1 Tax Collecto 1 Burgess. 4 Councilmen. CAMBRIA 1 School Direct 1 School Direct 2 School Direct 1 Supervisor. 1 Auditor. 1 Tax Collecto

1 School Direct 1 Supervisor. 1 Auditor. 1 Tax Collecto 1 Assessor. ASHVILL 1 School Direct 1 Auditor. 1 Tax Collecto 1 Burgess. 4 Councilmen. BARNESBO 1 Justice of the 1 School Direct 1 Auditor. 1 Tax Collecto 1 Assessor. BLACKLICH 1 Justice of the 1 School Direct 1 Supervisor. 1 Auditor. 1 Tax Collecto 1 Assessor. BROWNSTO 1 School Direct 1 School Direct 1 School Direct 1 Auditor. 1 Tax Collecto 1 Burgess. 4 Councilmen. CAMBRIA 1 School Direct 1 School Direct 2 School Direct 1 Supervisor. 1 Auditor. 1 Tax Collecto

1 School Direct 1 Supervisor. 1 Auditor. 1 Tax Collecto 1 Assessor. ASHVILL 1 School Direct 1 Auditor. 1 Tax Collecto 1 Burgess. 4 Councilmen. BARNESBO 1 Justice of the 1 School Direct 1 Auditor. 1 Tax Collecto 1 Assessor. BLACKLICH 1 Justice of the 1 School Direct 1 Supervisor. 1 Auditor. 1 Tax Collecto 1 Assessor. BROWNSTO 1 School Direct 1 School Direct 1 School Direct 1 Auditor. 1 Tax Collecto 1 Burgess. 4 Councilmen. CAMBRIA 1 School Direct 1 School Direct 2 School Direct 1 Supervisor. 1 Auditor. 1 Tax Collecto

1 School Direct 1 Supervisor. 1 Auditor. 1 Tax Collecto 1 Assessor. ASHVILL 1 School Direct 1 Auditor. 1 Tax Collecto 1 Burgess. 4 Councilmen. BARNESBO 1 Justice of the 1 School Direct 1 Auditor. 1 Tax Collecto 1 Assessor. BLACKLICH 1 Justice of the 1 School Direct 1 Supervisor. 1 Auditor. 1 Tax Collecto 1 Assessor. BROWNSTO 1 School Direct 1 School Direct 1 School Direct 1 Auditor. 1 Tax Collecto 1 Burgess. 4 Councilmen. CAMBRIA 1 School Direct 1 School Direct 2 School Direct 1 Supervisor. 1 Auditor. 1 Tax Collecto

1 School Direct 1 Supervisor. 1 Auditor. 1 Tax Collecto 1 Assessor. ASHVILL 1 School Direct 1 Auditor. 1 Tax Collecto 1 Burgess. 4 Councilmen. BARNESBO 1 Justice of the 1 School Direct 1 Auditor. 1 Tax Collecto 1 Assessor. BLACKLICH 1 Justice of the 1 School Direct 1 Supervisor. 1 Auditor. 1 Tax Collecto 1 Assessor. BROWNSTO 1 School Direct 1 School Direct 1 School Direct 1 Auditor. 1 Tax Collecto 1 Burgess. 4 Councilmen. CAMBRIA 1 School Direct 1 School Direct 2 School Direct 1 Supervisor. 1 Auditor. 1 Tax Collecto

1 School Direct 1 Supervisor. 1 Auditor. 1 Tax Collecto 1 Assessor. ASHVILL 1 School Direct 1 Auditor. 1 Tax Collecto 1 Burgess. 4 Councilmen. BARNESBO 1 Justice of the 1 School Direct 1 Auditor. 1 Tax Collecto 1 Assessor. BLACKLICH 1 Justice of the 1 School Direct 1 Supervisor. 1 Auditor. 1 Tax Collecto 1 Assessor. BROWNSTO 1 School Direct 1 School Direct 1 School Direct 1 Auditor. 1 Tax Collecto 1 Burgess. 4 Councilmen. CAMBRIA 1 School Direct 1 School Direct 2 School Direct 1 Supervisor. 1 Auditor. 1 Tax Collecto

1 School Direct 1 Supervisor. 1 Auditor. 1 Tax Collecto 1 Assessor. ASHVILL 1 School Direct 1 Auditor. 1 Tax Collecto 1 Burgess. 4 Councilmen. BARNESBO 1 Justice of the 1 School Direct 1 Auditor. 1 Tax Collecto 1 Assessor. BLACKLICH 1 Justice of the 1 School Direct 1 Supervisor. 1 Auditor. 1 Tax Collecto 1 Assessor. BROWNSTO 1 School Direct 1 School Direct 1 School Direct 1 Auditor. 1 Tax Collecto 1 Burgess. 4 Councilmen. CAMBRIA 1 School Direct 1 School Direct 2 School Direct 1 Supervisor. 1 Auditor. 1 Tax Collecto