

**THE PATTON COURIER**

Published Every Thursday.

Thos. A. Owens, Editor & Prop.  
E. F. Bradley, Associate Editor

Entered in the Post Office at Patton, Pa., as Second Class Mail Matter.

Subscription Rates \$2.00 per year in Advance. Single Copies 5 Cents.

**RATE CARD**—Legal Notices, 11.00 per inch, or fraction thereof, for 3 insertions; Card of Thanks, 50c; Business Locals 10c per line; Business Cards, \$10.00 per year; Display advertising, 30c per inch; Full position, 25 pct. extra; Minimum charge, \$1.00. Cash must accompany all orders for foreign advertising. All Advertising copy must reach this office by noon Wednesday to insure insertion. Unassigned correspondence will be ignored at all times.

**AUTOMOBILE RACES AT CAMBRIA COUNTY FAIR GROUNDS**

Among the additional entries which have been made for the feature 100-mile dirt track automobile race at the Cambria County Fair Grounds, Memorial Day, May 30, have been the signed blanks of a pair of well known tri-state district dirt drivers. They are

Joe Petrone, Youngstown, O., speedster and Jimmy Altman, well known Greensburg racer.

These two drivers, both planning in entering their own specially constructed cars, have high hopes in mind of setting a new record for a 100-mile, 200 lap, race. The Ebensburg track, one of the finest in the state and in splendid condition, even at present, after the winter layoff, is certain to enhance the speed possibilities of the fifteen or more drivers who will face the starter's gun May 30.

This is the first time in the history of the Cambria County track that it has been leased out for automobile racing. The directors of the fair Association, in years past, have been a bit wary of permitting the "Iron horses" to use the fine track, but growing popularity of the sport, combined with the fact that it is being run by responsible persons, have influenced the directors to give the game a whirl. There is every indication that the race will go over in one of those well known big ways.

Entries are being received daily by Race Secretary George Gossett, at 220 South Madala street, Pittsburg. The list so far is promising, eight drivers having sent in their entries before the official blanks were even sent out.

The druggist . . . the florist  
. . . the hairdresser . . . the  
stores are all within talking  
distance.

**TELEPHONE**  
*It's Easier!*



Who's Who? Look in the Telephone Directory

**YOU ARE INVITED!**

TO ATTEND THE

**Cooking And Home Economics Class**

AUSPICES OF  
LADIES' AUXILIARY OF AMERICAN LEGION

**MONDAY, May 20**

AT 8:00 P. M. IN THE  
UNDER DIRECTION OF

**Northern Cambria Catholic Club, Patton**

MRS. ORPHA C. HILL  
DIRECTOR HOME ECONOMICS,  
WESTINGHOUSE CO.

MRS. NELL BECK ROBERTS,  
DIRECTOR HOME ECONOMICS,  
PENN CENTRAL

**PENN CENTRAL**

DOOR PRIZES

SOUVENIRS

**EDWARD STEVENS**

FUNERAL DIRECTOR AND EMBALMER

Phone Office and Residence

CARROLLTOWN, PENN.



**The Best Start for a Happy Married Life**

During the years past we have watched many newlyweds start on the journey of life. Almost without exception those who saved a part of their income regularly have become happy and prosperous. May we suggest that the new brides and grooms of this year come here and learn the advantages of savings account with this bank?

**THE FIRST NATIONAL BANK**

PATTON, PENNSYLVANIA

CAPITAL \$200,000.00  
SURPLUS \$200,000.00  
TOTAL RESOURCES OVER \$3,240,000.00  
Geo. E. Prindible, President; F. E. Farabaugh, Reuel Somerville, James Westrick, P. J. Kelly, Vice Presidents, Frank L. Brown, Cashier; M. Don Connell, M. S. Larimer, Assistants.  
A ROLL OF HONOR BANK

**SPECIAL**

(2 days only)

Friday and Saturday

Franco-American Brand

**COFFEE**



**43<sup>c</sup>**

Don't fail to take advantage of this  
**REMARKABLE OFFER!**

Only 2 lbs. to each customer

This exceptionally low price is made possible thru the co-operation of dealers listed below, The Wholesale Distributors and the Roasters of Franco-American Coffee. If you have never tried this wonderful coffee, you may now do so at a price lower than ordinary coffees. If you are one of the many thousands of regular users, you may buy 2 lbs. on the above dates at this previously unheard of low price.

Get your FRANCO-AMERICAN COFFEE at this Special Low Price at any of the following stores:

- BORGESON, CARL, Palmer Ave., Patton, Pa.
- CHRISTOFF, G. K., Magee Ave., Patton
- CAMBRIA MERC. CO., Marshall
- GROZANICH, P., 500 S. 5th Ave., Patton
- GAGLIARDI, M., 503 S. 5th Ave., Patton
- IANELLO, L., 317 Magee Ave., Patton
- LEBRUN, MRS. GEO., Patton
- RADTKEE, JULEA, Beech Ave., Patton
- SPOT CASH STORE, Magee Ave., Patton
- SUNSERI, SAM, Magee Ave., Patton
- SINGEL, JOHN, Patton
- SULICK, JOHN, Patton
- ECONOMY MEAT MARKET, Hastings
- RITTER, S. F., Hastings
- HALOW, P. E., Patton

the co-operation of:

**LAUDERBACH-GRIEST CO.**

**Constant Driving has Sold the Salesman on Sterling**

SALESMEN speak with authority on motor oils and gasolines. On the road—day after day—the old law of averages works out, and they soon discover which oil really has a body and which gas really has the pep.

Sterling stations, wherever they dot the highway, are patronized by salesmen. It is when a car is subjected to constant hard mileage that Sterling Motor Oil has the greatest opportunity to show its decided superiority over ordinary motor oils.

**Why He Pays More and Uses Ethyl**

Said one salesman—"Yes, Ethyl cost a few cents more. My car expense is paid on a mileage basis and you would think I'd buy the cheapest gas I could get—and save the difference.

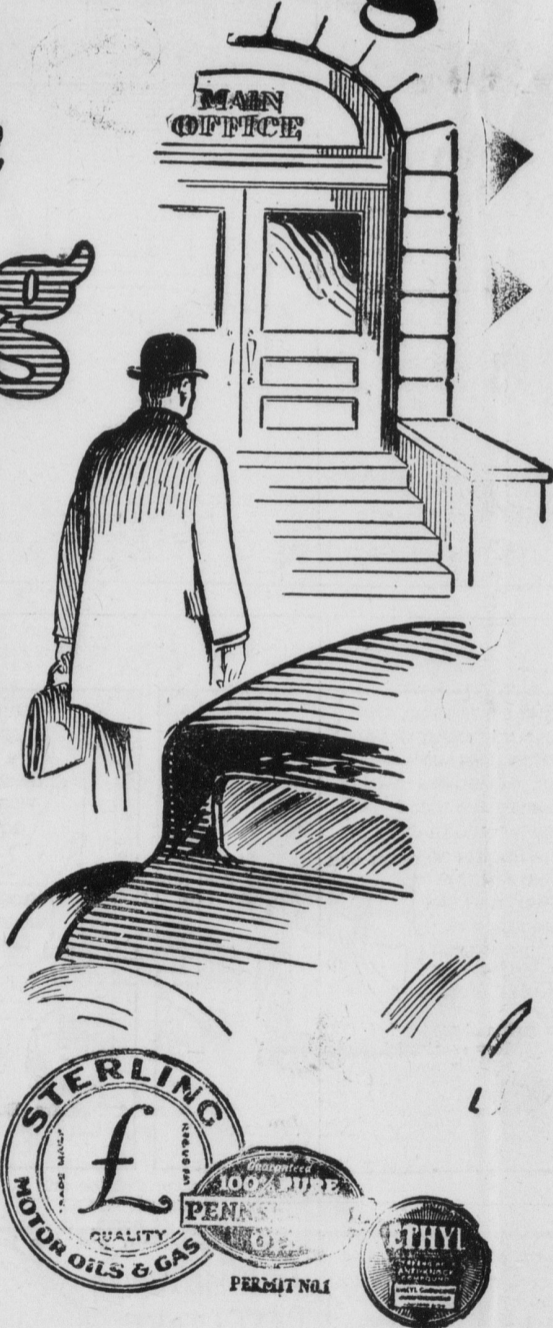
"But it don't work out. The experience of mileage soon teaches you that. Travel ten or twenty miles a day and you would never find out, but knock off a hundred or more every working day in the year and you will soon see the economy and satisfaction in using Ethyl."

Sterling Ethyl Gasoline and Sterling Motor Oil make an ideal protection and power combination.

**STERLING OIL COMPANY**

**Sterling**  
MOTOR OILS AND GASOLINE

A BETTER MOTOR OIL - 30 CENTS A QUART



107 DETOURS  
The Pennsylvania Department of Highways has 107 detours in force, with the construction season less than a month under way.

**EBENSBURG**

Rougly cute ar...vious is the des...baby elephants...of the star amu...the free daily sh...show at the Camb...Exposition at Eb...the beginning J...who has so succ...diminutive pach...although they ar...severe routine of...has to be constan...their mate tend...their own accou...actors call "gags"...ly. The largest o...ly five feet high...one of them, "I...one of the most...shimmy" and Ch...was ever given...animal or human...dance and clown...light of all the...two to seventy ye...ence. Even those...who consider th...have to smile at

It c

to

MO

THE For...but it is...owner of...possible

Becau...investme...Model T...tinue to...by Ford

So tha...Model T...est Ford...of any re

You w...because...prevent...value of...of additi

For a...your gen...universal...of \$3. O...steering g...overhaul...tween \$5...of \$22.5...and trans

These...need and...condition...low, how...facturing

FOR

AT

RI

WI

HAVE...SPECIFICA...NEW PISTO...MOTOR WI

PRICE

PAT