

Announcing ANOTHER OPPORTUNITY

TO BECOME A SHAREHOLDER IN A SUCCESSFUL PUBLIC UTILITY

Electric Light, Power and Gas Properties are stable enterprises. They render indispensable service to homes and industries. Electric Light, Power and Gas are essential to home comfort and to manufacturing progress.

From time to time for the past eight and one-half years, the Penn Central Light and Power Company has offered their Preferred Shares to their customers, public and employes, with the result that they now have more than 9500 Preferred Shareholders. Ninety-five per cent of these shareholders are customers and employes who have been receiving dividends regularly since date of issue. Thus the company has been able to share its earnings with its customers, employes and the public.

Financial men look with favor upon the Securities of Electric Light, Power and Gas Companies. The reasons are easy to understand:

1. Exceptional Safety.
2. An Attractive Return.
3. Easily Converted into Cash.
4. Tax Free.
5. Dividends Paid Since Date of Issue.
6. Modern Life Will Not Do Without Electricity.
7. Industry Solves Big Problems With Electric Power.
8. For Service Rendered, Electricity Is Economical.
9. The Demand for Service Is Constantly Growing.
10. The Business Is Almost Entirely on A Cash Basis.

PRICE PER SHARE AND DIVIDENDS

We are offering this Issue of Preferred Shares \$2.80 Series, dividends payable quarterly, at \$47.50 per share either for cash or on savings plan. The terms of the savings plan are \$4.00 per share with the subscription and \$4.00 per share per month, or the equivalent, within the period until fully paid. Interest at the annual rate of 5 per cent will be allowed on all payments, to be accrued and credited on completion of payments. The \$2.80 Series, Cumulative Preferred, has all the rights and Privileges of the \$5.00 Series (Closed) except the price, yield, liquidation and call values, which is changed due to the difference between the \$5.00 and \$2.80 Dividends. Subscriptions for shares can be made at any of our offices or thru any of our employes.

Proceeds from the sale of this Issue will be used for permanent improvements which are necessary in communities served by the Penn Central Light and Power Company.

This corporation is a part of the Middle West Utilities System. The management is in the hands of experienced public utility men whose ability as economic and efficient operators has been thoroughly demonstrated.

PENN CENTRAL LIGHT & POWER COMPANY

J. H. SHEARER, PRESIDENT AND GENERAL MANAGER

NEW COFFEE SHOPPE

NOW OPEN FOR BUSINESS SANDWICHES, PIE, ICE CREAM, COFFEE, SODAS, ETC. Confections, Candy, Cigars, and Tobaccos.

BIGOS BLDG., MAGEE AVE. GIVE US A TRIAL Gooderham & Weakland, Props.

'Service, Courtesy and Satisfaction.'

666

is a Prescription for Colds, Grippe, Flu, Dengue, Bilious Fever and Malaria. It is the most speedy remedy known

REUEL SOMMERVILLE ATTORNEY-AT-LAW Office in the Good Building.

LIME-MARL

"Nature's Great Soil Builder" The fine, dry, quick-acting, fully available lime. Superior in quality and condition. Brings best results at least cost per acre—low cost delivered your station. Write today for prices and interesting booklet. NATURAL LIME-MARL COMPANY, ROANOKE, VA. (2 Plants at Charles Town, W. Va.) (B. & O. R. R.)

EXECUTRIX'S NOTICE In the Estate of William M. Simpson, deceased, late of Patton Borough, Cambria County, Pennsylvania.

Notice is hereby given that Letters of Administration in the Estate of said decedent, have been granted to the undersigned. All persons indebted to said Estate are requested to make payment, and those having claims or demands against the same will make them without delay to Mary D. Simpson, Patton, Penna. Executrix.

F. J. Hartmann, Attorney, Ebensburg, Penna.

SOUND WARNING TO CARELESS MOTORISTS

"Many people like to ride the crown of the road when traffic does not interfere, but the practice is dangerous to the point of suicide when approaching a curve or the crest of a hill." Wilson C. Price, superintendent of the State highway, said recently. "Betting that the road is clear when you can't see it is a poor gamble."

"It is a pleasant feeling to have plenty of space between your wheels and the edge of the road, but the habit of driving in the middle is a bad one. Even though you do see a car come over the hill or around the curve in time to avoid it you must make a sharp turn to get over and risk a skid. Too often you don't have that precious second to get over and the rear of your car must take a side-swipe," the patrol head said.

"It is unfair, poor manners and lacking in sportsmanship to ride in the middle at a hillcrest or curve. Another driver suddenly confronted with your car and not enough road receives a shock that too often has resulted in accident and we can hardly be fair in calling such an occurrence an 'accident.'"

"Accidents don't happen. They are caused. Approach hillcrests and curves with caution and keep to your own side." Price advised.

LAKE ERIE FISH CATCH DECREASES

The total catch of fish out of the Port of Erie last year dwindled to 1,957, 20 pounds, worth \$23,424, a survey completed by the Board of Fish Commissioners recently revealed.

N. R. Buller, commissioner of fisheries, pointed out that until recent years the catch always exceeded \$20,000,000 pounds and was looked upon as a "million dollar industry."

Repeated conferences during the past ten years held with the commercial fishermen to save the industry have failed to bring results Buller said.

Present conditions were forecast by the board ten years ago. Buller asserted and that effort in that period to take care of the future met with little or no co-operation from the fishermen.

Predictions of the fishermen that good catches run in cycles failed to develop during the ten year period. If the present rate of decrease continues Buller believes that it will not pay the commercial fishermen to operate their boats out of its port.

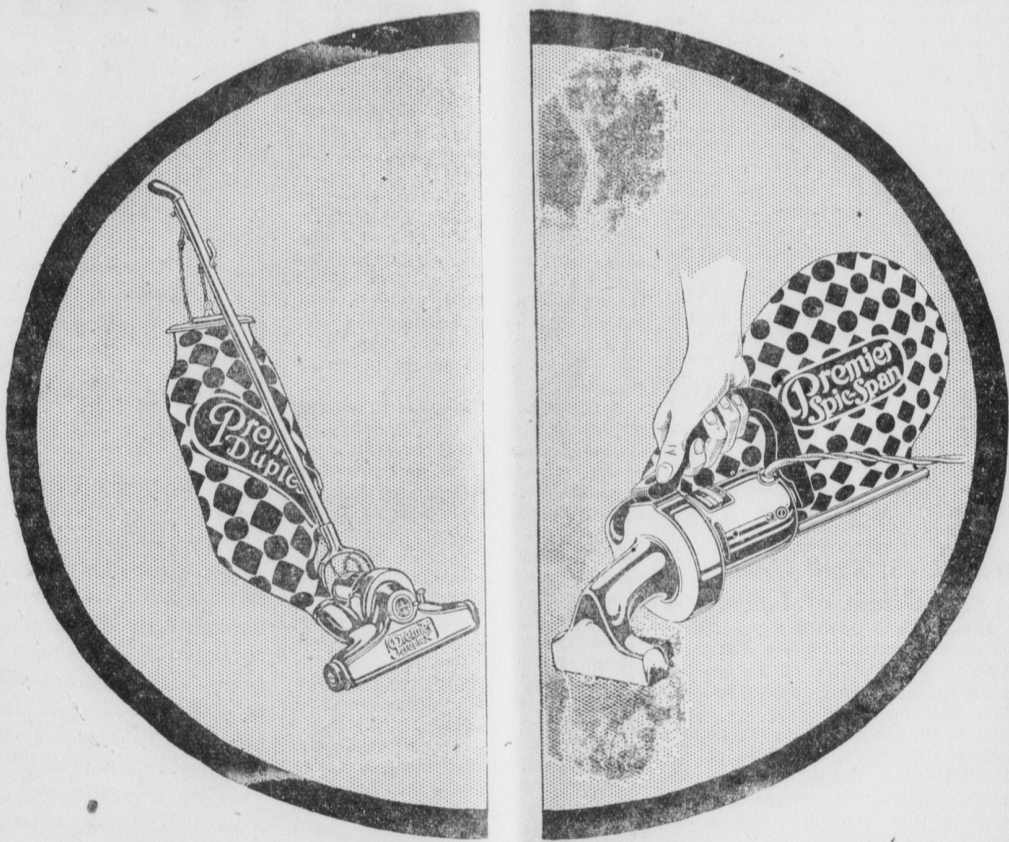
SELECT FERTIG

John H. Fertig, assistant director of the Legislative Reference Bureau has been elected a member of the State Employees' Retirement Board.

INSPECT QUARRIES

The Department of Highways is making an inspection of all commercial quarries from which they obtain stone to check on the quality obtained and methods of production.

NOW! 2 CLEANERS For the Price of ONE!



\$2.50 Down \$2.50 Down THE GREATEST CLEANER VALUE EVER OFFERED

PREMIER

DUPLEX With Scpi-Span \$72.90 JUNIOR With Spic-Span \$48.00 SPIC-SPAN Separately \$14.50

A Phone Call Will Bring You A FREE DEMONSTRATION

PENN CENTRAL

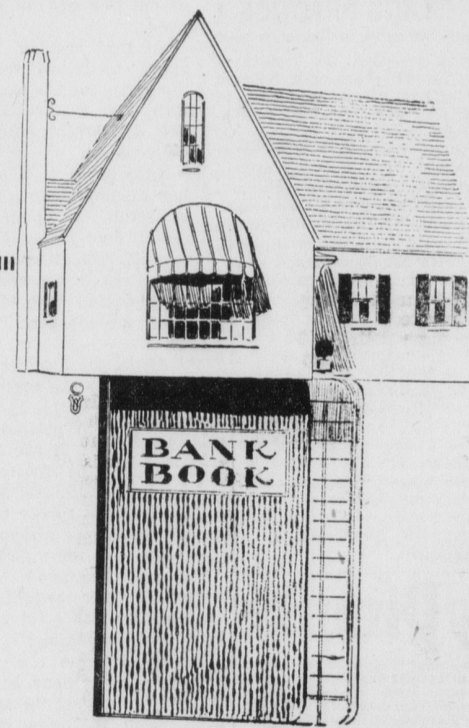
CANCER FREE BOOK SENT ON REQUEST

Tells cause of cancer and what to do for pain, bleeding, odor, etc. Write for it today, mentioning this paper. Address Indianapolis Cancer Hospital, Indianapolis, Ind. 121-43.

BLADDER WEAKNESS

If Bladder Weakness, Getting Up Nights, Backache, Burning or Itching Sensation, leg or groin pains make you feel old, tired, peppy, and worn out why not make the Cystex 48 hour test? Don't get up. Get Cystex today at any drug store. Put it to a 48 hour test. Money back if you don't soon feel like new, full of pep, sleep well, with pains alleviated. Try Cystex today. Only 60c. Fogerty's Drug Store.

INDIANAPOLIS Parnell, Cowher & Co. INDIANAPOLIS



A Foundation of a Home Of Your Own

There is one firm foundation upon which you can start to build right now to own your own home — a savings account in this bank. Each week you should add a certain amount of your earnings, and almost before you know it, you will have enough to start building a home

THE FIRST NATIONAL BANK

PATTON, PENNSYLVANIA

CAPITAL \$200,000.00 SURPLUS \$200,000.00 TOTAL RESOURCES OVER \$3,240,000.00 A ROLL OF HONOR BANK