

THE PATTON COURIER

Published Every Thursday.
Thos. A. Owens, Editor & Prop.
E. F. Bradley, Associate Editor

Entered in the Post Office at Patton, Pa., as Second Class Mail Matter.

Subscription Rates \$2.00 per year in Advance. Single Copies 5 Cents.
RATE CARD—Legal Notices, \$1.50 per inch, or fraction thereof, for 3 insertions; Card of Thanks, 50c; Business Locals 10c per line; Business Cards, \$10.00 per year; Display advertising, 25c per inch; Full position, 25c extra; Minimum charge, \$1.00. Cash must accompany all orders for foreign advertising. All Advertising copy must reach this office by noon Wednesday to insure insertion. Unsolicited correspondence will be ignored at all times.

THE REPUBLICAN TICKET.

President.....HERBERT HOOVER
Vice President.....CHARLES CURTIS
United States Senator DAVID A. REED
State Treasurer.....EDWARD MARTIN
Auditor General.....
.....CHARLES A. WATERS
Judge of the Supreme Court.....
.....WILLIAM D. PORTER
Congress.....J. RUSSELL LEECH
State Senator.....JAY R. SHEESLEY
General Assembly, Second District:
MILTON SPENCER, EDMUND
JAMES, JOHN R. MUSSER

LEGAL NOTICE.

ADVERTISEMENT FOR BIDS.
SEALED BIDS will be received at the office of the County Controller, Court House, Ebensburg, Pa., until 10 o'clock A. M., (Eastern Standard Time) on Friday, September 14, 1928, for the reconstruction and widening of sections of the Cresson Pike, a County Road between Ebensburg and Cresson, Pa., all in accordance with plans and specifications on file in the office of the County Engineer, third floor, Court House, Ebensburg, Pa.

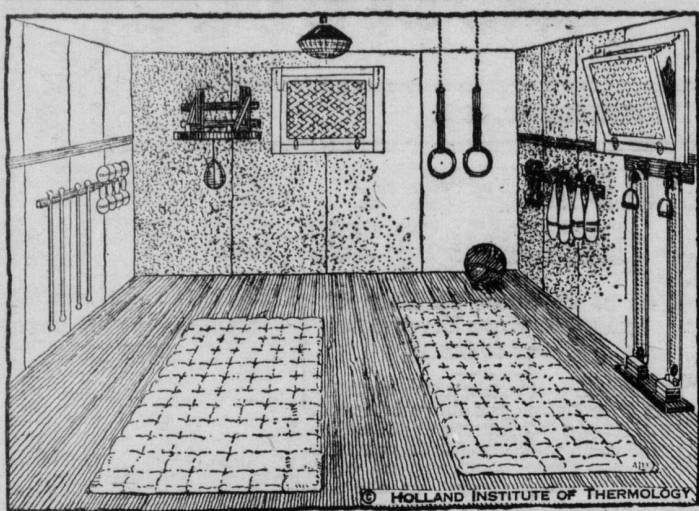
The work will consist of approximately 4114 Cubic Yards of excavation and 6078 square yards of one-course concrete pavement.
Bids will be publicly opened and read at the regular session of the county commissioners at eleven (11) o'clock A. M., (Eastern Standard Time), Friday, September 14, 1928.
Instructions to bidders, specifications, plans, proposals and contract forms can be obtained at the office of the County Engineer, third floor, Court House, Ebensburg, Pa., for a deposit of TEN (\$10.00) DOLLARS for each set, which deposit will be refunded upon submission of bid and return of plans and specifications to the County Engineer's Office.

Each bid must be accompanied by a certified check to the amount of FIFTY HUNDRED (\$1500.00) DOLLARS, made payable to the treasurer of Cambria County, Pa., as a guarantee that if the proposal be accepted the Contract will be entered into.
Work to be completed in Forty (40) working days.

All proposals must be made on the blank forms furnished by the County Engineer, as none other will be accepted and they shall be enclosed in an envelope bearing the name and address of the bidder, and marked "Proposal for Re-construction Cresson Pike," and addressed to the County Controller, Court House, Ebensburg, Pa.

The County reserves the right to reject any or all bids, and to award the contract as may be deemed to the best interest of the county.
HENRY L. CANNON,
County Controller of Cambria County, Pa. 3t.

Basement Gym Is Boon to Kiddies



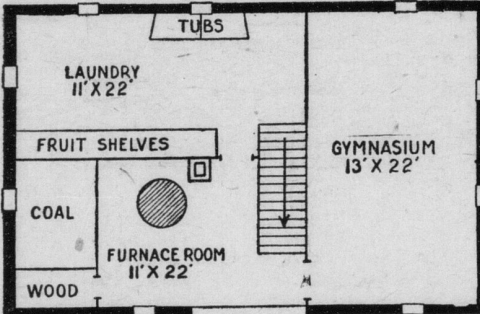
TWO pins admission to see the great Olympian team in action and it would be cheap at twice the price! The scene is not Amsterdam, but the family basement rigged up as a gymnasium and an irresistible magnet to all the boys in the neighborhood.

This is but one of the many uses that extra space in the basement may be put to. Most new houses are designed with such rooms in mind but in many homes already built the basement plan can be rearranged to afford a study, workshop, gymnasium, billiard room or sewing room. Here, for example, is a model basement layout, made from an actual house plan and practical in every way.

The basement is seven and a half feet deep, which is of ample depth to admit the finest type of Holland warm air heating plant. The stairs come down in most houses at the center of the basement, which is not ideal from the point of the warm air furnace but still is feasible in most cases, as shown here.

Yet with all these provisions, there is still room for a gymnasium, 13' x 22'; it is partitioned off with matched lumber or a wallboard nailed to 2' x 4' up rights. The masonry walls are whitewashed and the first floor joists sealed with a sound-deadening material in the interest of the nerves of the grown-ups above. Guards at the windows and over the lights are an essential, as are a couple of regular gym mats. The rest of the equipment can be acquired bit by bit, as gifts or from vacation-time earnings.

It will be noticed that the combined furnace-room, fuel-room and wood-box space are 11 x 22 feet in size—slightly more than one-third of the area of the basement. This is the fault of this particular house-plan, not of the Holland warm air super-circulating heating plant, which will operate adequately in a space as small as 10x10, if need be.
One special feature of the Holland furnace, which the housewife may take into account in planning her laundry in the basement, is that a hot-water coil may be installed as an integral part of the heating plant. This is a practical means of maintaining a hot water supply, and a laundry in the basement would reduce the cost of a "hook-up" with the laundry tubs to a minimum. A warm air leader pipe may be provided which will carry the laundry with warm air and help to dry the clothes in the winter time or during rainy weather. The cleanliness of this furnace is another factor which contributes to the practicability of the basement-laundry, for the clothes may be washed and hung up to dry there without any danger from soot and dust because the interior construction of the heating plant prevents dust and soot from escaping into the basement.



THE PATTON COURIER

666

Cures Malaria and quickly relieves Biliousness, Headaches and Dizziness due to temporary Constipation. Aids in eliminating Toxins and is highly esteemed for producing copious watery evacuations.

TRACTS OF VIRGIN TIMBER YET EXIST

Some Trees in Pennsylvania Were Growing Before Columbus Arrived.

The forest primeval immortalized by Longfellow in "Evangeline," is no longer present in Pennsylvania, but scattered throughout the state are numerous tracts of virgin forest which are still standing.

Officials of the Pennsylvania Department of Forests and Waters, in pointing out that there may be found in the state today only a few examples of the virgin forest that once covered practically all of the mountains and valleys of the Keystone State called attention to the following areas where big timber may be seen to advantage:

The Snyder-Middlesworth State Forest Park—This is the largest body of original growth big timber in the state forests of Pennsylvania. It comprises 425 acres of original hemlock, pine, and hardwoods, mostly virgin timber. Two hundred and fifty acres have never been touched with an axe. The park is provided with camping facilities and is visited by thousands of tourists annually. It is located in the Bald Eagle State Forest about five miles west of Troxleville, Snyder county.

Detwiler Run State Forest Monument—This tract of fifty acres comprises a tangle of giant original forest trees, mostly white pine and hemlock, with an undergrowth of almost impenetrable rhododendron. Students of the early forest conditions declare that it pictures very truly the primeval forest conditions of the state. This forest monument is located at the headwaters of the Detwiler Run, Huntingdon county, on the Logan State Forest.

Alan Seegar State Forest Monument—Within this monument are hemlock trees of unusual size and beauty—undoubtedly some of them growing when Columbus discovered America—and there are stands of oak that have no superior in the state.

Magnificent growth of rhododendrons, some with stems forty feet high border the streams that pass through this area of 155 acres along the Stone Column road, near the town of Altoona or Huntingdon by way of McAlvey's Fort; from State College by way of Bear Meadows, and from Milroy and Reedsville.

Joyce Kilmer State Forest Monument—Comprises about 21 acres of hemlock, a few white pine and many mature hardwoods, situated on the north slope and top of rugged White Mountain, Union county, in the Bald Eagle State Forest. To see this timber close at hand one must be a real mountain climber. A splendid view of it can be seen from passing trains at Paddy Mountain Station on the Pennsylvania Railroad.

McConnell's Narrows State Forest Monument—Contains some of the most magnificent rock scenery in Pennsylvania as well as stands of original hemlock and white pine. Colonel Henry W. Shoemaker of the State Forest Commission states that the "rocks are of colossal proportion, some standing erect like chimneys, and among these giant boulders are vast fissures and enormous subterranean caverns, in which the wild animals find shelter and seek refuge. The giant rugged trees present a beautiful silhouette against the sky. It is a picture that once seen will never be forgotten. The area is on the south slope of White Mountain, Union county, opposite Cherry Run Station. It may be reached over the road thru Laurelton and Welkert, which branches off the Lewistown-Bellefonte State Highway one and one-half miles west of Hartleton.

Mount Logan State Forest Monument—Covers forty-seven acres on Mt. Logan, Clinton county. The inaccessibility of these giant trees saved them from the lumberman's axe. Less than one mile from Youngdale Station (McElhattan) on the New York Central Railroad, is an excellent trail leading to the top of Mt. Logan.

Martin's Hill State Forest Monument—Comprises nine acres of old original hemlocks within a gorge of one of the highest mountains in Southern Pennsylvania. These hemlocks were preserved largely through the efforts of Cap. J. G. Dillin, of Media, who lumbered over these mountains thirty years ago. The Martin's Hill Monument is 3075 feet above sea level. On its summit is one of the forest fire observation towers of the Pennsylvania Department of Forests and Waters, from which may be had a magnificent view of the surrounding forest. The monument may be reached from Bedford by way of Rainsburg, thence over six miles of forest road in the Buchanan State Forest.

Colonel R. B. Ricketts Estate—Located in the gorge of Kitchen Creek below Gango Lake, Sullivan county. This gorge for a distance of five miles is lined with grand original hemlocks, stretching one half mile back on either bank of the stream, on which is a series of thirteen beautiful waterfalls.

HOUSE WORK, or nursing of children, desired by 2 girls, 17 and 21 years, in Patton. Inquire 713 Beech avenue, Patton.

playmates.
"Motorists and parents alike must strive to end this stream of blood. If you are appalled by the deaths and the wounds of the World War, compare them with the nation's traffic casualties of the past ten years, equivalent to several divisions of an army."

ADMINISTRATRIX'S NOTICE.

In the estate of Gottfried Anderson, late of the Township of Elder, County of Cambria, and State of Pennsylvania, deceased.

Letters of administration in the above estate have been granted to the undersigned, who requests all persons having claims or demands against the estate of said decedent, to make known the same, and all persons indebted to said decedent to make payment with out delay.

MRS. JUSTINA ANDERSON, Administratrix.
Patton, R. D., No. 2, Pa. 3tpd.

EXECUTRIX'S NOTICE.

In the Estate of John Gagliardi, late of the Borough of Patton, County of Cambria, and State of Pennsylvania, deceased.

Notice is hereby given that Letters Testamentary in the estate of said decedent have been granted to the undersigned. All persons indebted to said estate are requested to make payment and those having claims or demands will make them known without delay to

Attorney for Executrix, Court House, Ebensburg, Pa. 6t.
THERESA GAGLIARDI, Executrix, Patton, Pa.
Fred J. Fees.

Bell Phone 34-R-14, 34-R-15
Established 1912.

MAPLE FARM HOME

Akron, Lancaster County, Pa.

Situated in Garden spot of America, conducted for comfort of elderly guests needing care and cheerful home, medical and nursing if necessary; good food; cheerful and honest service. Permanent arrangements made providing a good home and care for life. Write for rates, photos. Location near Lancaster, Pa.

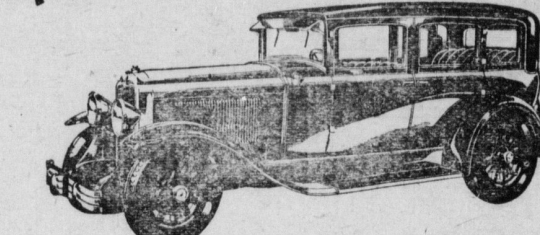
HERMAN R. FRANZEN,
Box 22, Akron, Pa.

Modern Rates Reasonable Baths

**What You Want
How You Want It
When You Want It**

For anything in the line of printing come to us and we'll guarantee you satisfactory work at prices that are right

The new Buick is the New Style



Graceful contours instead of straight lines... the gleam and sparkle of brilliant colors and chrome plating instead of drab effects... the most beautiful bodies ever built... Buick's masterpiece bodies by Fisher

At a time when motor car beauty was practically standardized—when imitation was the vogue—when there was a glaring lack of originality in body design—Buick has swept far beyond the commonplace and achieved a style which the entire country is acclaiming as the most distinctive and beautiful ever shown!

Fisher, the world's foremost builder of automobile bodies, has operated with Buick, the world's foremost builder of fine cars, to create a new mode—a new fashion—and so luminous is the result and so eagerly is the public welcoming it that Buick's great factories have reached new production levels in an effort to keep pace with an ever increasing demand!

**PATTON AUTO CO,
PATTON, PA.**

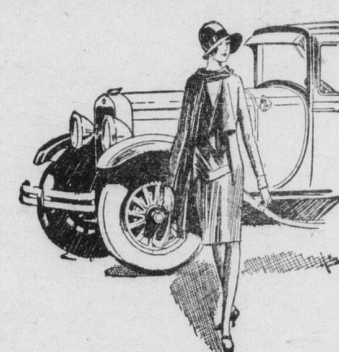
REUEL SOMMERVILLE
ATTORNEY-AT-LAW
Office in the Good Building.

WINDMILL
Parnell, Cowher & Co.

FRIGIDAIRE
PRODUCT OF GENERAL MOTORS

The Electric Refrigerator made and guaranteed by the Great General Motors Corporation. Four out of every five Electric Refrigerators is a FRIGIDAIRE. More than 450,000 satisfied users. Priced from \$180 up.

L. E. KAYLOR,
Dealer, EBENSBURG, PA.



\$860 f. o. b. factory

**Buy a NEW and Larger
Erskine Six
With Proved Speed and Stamina
(1000 miles in 984 minutes)
And With Fine-Car Smartness—
backed by Studebaker,
a name which has symbolized integrity**

for 76 years
Drive It Today!
**Central Garage, Patton
STUDEBAKER**
The Great Independent

WHEN you make a visit to that out-of-town friend by telephone you pay only a one-way fare—twenty-five or thirty miles for a quarter, sixty miles for half a dollar, every town within a hundred miles for 75c.

And the return trip is free!

GEORGE H. FULMER
Manager

THE BELL TELEPHONE CO. OF PENNSYLVANIA
THE BELL SYSTEM
AMERICAN TELEPHONE & TELEGRAPH CO.

PICTORIAL

1. When Herl...
Iowa to Ore...

2. After a year...
Herb's first...

DECRY NEEDS...
HUNDRED

Prominent citizens are expressing the conditions that have for the Pennsylvania turn away an un... of applicants to this year, according the college. Years of building out, is the reason year will have room 1200 freshmen an