

the BABY



In this enlightened age her baby something she was perfectly harmless, when a few drops of plain right a baby's stomach cost any little ill. Fretful, too; it seems no time being is serene.

beauty of Castoria; its nice seems just what it does all that castor oil splash, without shock to Without the evil taste. Being purely vegeta- an give it as often as n of colic; constipation; need to aid sound, nat-

warning: It is genuine astoria that physicians Other preparations may from all doubtful drugs, of this writer's is going Besides, the book on ing of babies that comes 's Castoria is worth its id.

ren Cry for

etchers STORIA

akes Life sweet

generations the National med of Holland for kid- weter for suffering men and taking them today and ickly your troubles will druggists in 3 sizes.

D MEDAL ARLE OIL

ines Capacity

are capable of crossing tic and Pacific oceans, ed so repeatedly. The av- speed of a submarine niles an hour. At this days would be required e to travel from New ol, a distance of 3,578

ook forward enthusi- end of the world" excitement.

medy for coughs and colds, g and money. No opium. whursh, N. Y., Mfrs.—Adv.

r have a friend if you about a fault.

AIN

ve antidote for ere is only one every tablet, and it doesn't, it is

So are colds, a, neuritis, and ny drugstore—

spirin; art

ester of Salicylic acid

# To Help Save Our Forests



Weakness—Floyd Gottfredson, Richfield, Utah.

By ELMO SCOTT WATSON  
WITHIN a few weeks President Coolidge will be issuing his annual proclamation for American Forest week, during which time all Americans are urged to turn their attention to the problem of saving our vanishing forests and to co-operate by every means possible to that end.

In anticipation of that observance the association some time ago announced a cartoon contest in which a series of prizes were offered for the best cartoons drawn by amateurs. The judges of the contest were Mrs. John Dickinson Sherman, president of the General Federation of Women's Clubs; John Hays Hammond, Jay N. Darling (Ding), noted cartoonist of the New York Herald-Tribune; Col. William B. Brekeley, chief forester of the United States forest service, and Dr. John T. Finley of the New York Times. These judges recently announced the prize winners among the 210 cartoons which were entered in the contest and which came from every state in the Union and two foreign countries.

The seven winning drawings will be used in the association's educational drive during American Forest week in April and will be especially valuable because the pictured lesson which they will teach can be understood by everybody, even those who are unable to read. For that reason the seven winning cartoonists will have the satisfaction of knowing that their efforts were not only rewarded with cash prizes but with the satisfaction of knowing that they have performed a patriotic duty in helping save our forests. They are the following: First prize, \$150, Sam E. Nash, Jr., Tyler, Texas; second, \$100, Floyd Gottfredson, Richfield, Utah; third, \$50, Richard W. Tipper, Washington, D. C.; fourth, \$25, James T. Shaffer, Lancaster, N. Y.; fifth, \$25, F. D. Miller, Denver, Colo.; sixth, \$25, Bruce Russell, Sierra Madre, Calif.; seventh, \$25, William L. Addinkson, Jackson, Miss.

Saving the forests which we now have is only one part of the effort of the American Tree association. Even more important is the matter of bringing to the attention of the nation the amount of idle land in this country and how this land can be utilized in forest production. This part of the problem is being taken care of by the educational work of the Charles Lathrop Pack Forestry trust. One phase of this work has been the distribution of 1,000,000 "Forestry Primers" to the schools of the nation. The millions of acres of idle land in this country, Mr. Pack says, must be put to work growing trees because the economic structure of the country depends upon wood in its thousands of uses. The printed word and the cartoon make up part of the ammunition.

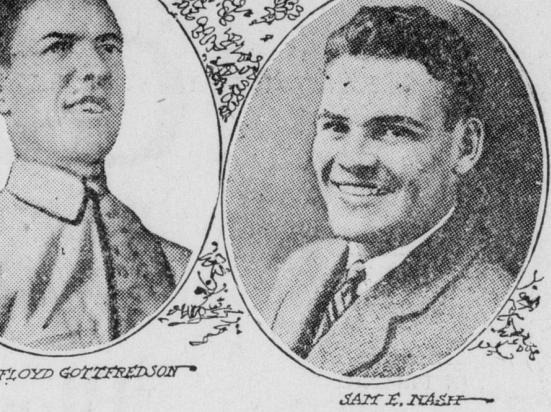
In the United States the center of the lumber industry is in the Rocky mountain region, far removed from the points of great consumption of forest products, the American Tree association points out. States like New York, Pennsylvania, Michigan, once the center of the industry, now import lumber over long hauls to keep their factories going.

In contrast with such a situation is that in Sweden. The annual growth of timber in Sweden's forests now exceeds the annual cutting by nearly 100,000,000 cubic feet, according to a study of the Swedish forestry system

Civilization's Ills  
When some disgruntled genius of the jungle, dissatisfied with the lack of soap, newspapers and underwear, got up the idea of civilization, he unwittingly let the "so-called human race" in for a host of unexpected troubles. He, no doubt, held out to his fellows a glittering prospect of wealth, comfort, loafing, rapid transit, limousines, pullmans, medicines, hospitals, welfare workers, radio, air-



Pruning the Tree—Sam E. Nash, Tyler, Texas.



FLOYD GOTTFREDSON

by Trade Commissioner Emil Kekich of the Department of Commerce. This result, the report declares, has been accomplished through forestry practice making extensive areas more productive and through closer utilization which has relatively reduced cutting.

Without question timber growing is the outstanding feature in the industrial economy of Sweden at the present time and it is constantly becoming of greater importance. Over one-half of the land area is especially adaptable to forest growth, with the soil possessing little or no fertility as agricultural land. The bulk of the forests belongs to private owners, and the forest policy of the country has been essentially one of the economy of private holdings. The owners of these private forests are divided into two groups—the farmers, large and small, and large corporations which operate on large-scale forest methods. The Swedes were among the first to realize that some measure of restriction in the large private forest areas was necessary, and among the first, if not the first, to actually apply remedies to overcutting and incidentally point the way for other countries. Practically all the large lumber, paper and pulp corporations operate forest departments of their own, which work in close harmony with the royal conservation boards, the government forest service and the colleges and schools. From the forest experiment station at Stockholm comes Dr. Lars G. Romell to take the Charles Lathrop Pack research professorship of forest soils just established at Cornell university.

The unusual character of its legislation has been the principal contribution to the progress in forest management during the past two decades. The most important point involved in this legislation governing the care of the forests is that the successful promotion of forest management depends in the last analysis on the whole-hearted support of the people and its universal application. The principal feature of enforcement embodies the element of securing cooperation primarily through education. If the example of Sweden, which may well be emulated by the United States, presents the bright side of the picture, the experience of another nation plainly shows the darker side and should be an object lesson to this country, unless it gives the forestry problem serious consideration. From a recent issue of the Congressional Record is taken these excerpts under the title of "A Plea for the Forests," from an address by John Q. Tilson, majority leader of the national house of representatives, who made an extended trip through China, Japan and Korea last summer:

No one can visit China without having the tragic lesson of forest destruction borne in upon him in a most forceful manner. China has 60,000,000 population. In area it is one of the largest

More Work From Coal  
In recent years the efficiency of a ton of coal has been greatly increased and it is stated this has been accomplished mainly through the activities of the electric power companies by which all suggested improvements are tried out and adopted when warranted. Between 1900 and 1927 the increase in the amount of power used represented 45 per cent, whereas the increase in the amount of fuel used was only 17 per cent.

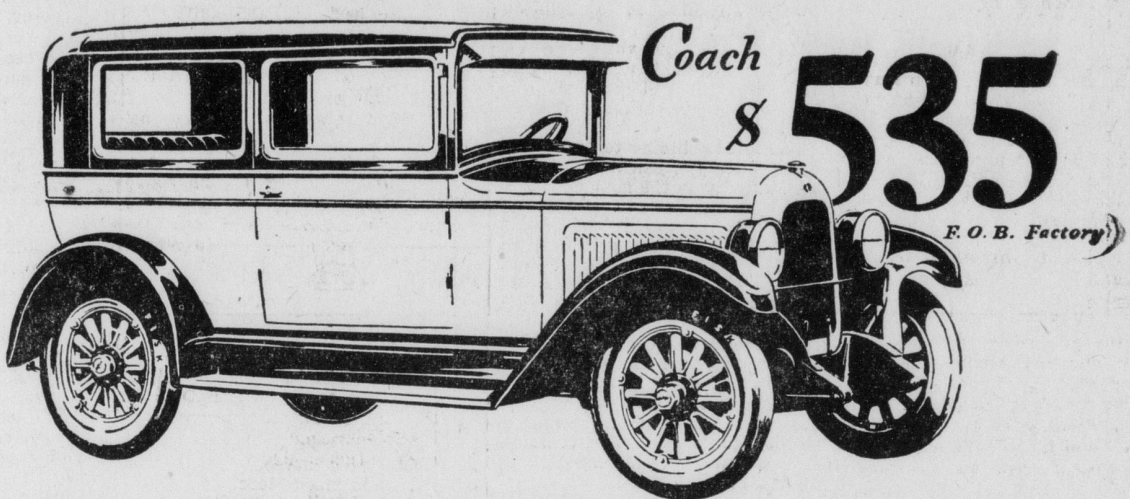
Courtesy is love in little things.

THE PATTON COURIER

# Never before

## such BEAUTY and QUALITY for so little money!

### the perfected Whippet



Model	Price	Reduction
SEDAN	\$585	\$140
Touring	\$455	\$170
Coach	535	90
Roadster (2-pass.)	485	
Roadster with rumble seat	525	170
Coupe	535	90
Cabriolet Coupe	545	200
Chassis	355	90

All prices f. o. b. factory

### "A Quality Car at the Lowest Price in Our History"

THE sensational success of the perfected Whippet is due not only to its remarkable performance qualities, but to the pleasing appearance of each of its body types.

You will be proud of owning a Whippet and you will thrill at its liveliness. It will deliver you all the speed you want—it picks up from 5 to 30 miles in 11.5 seconds; its BIG 4-wheel brakes will bring it to a stop within 51 feet from a speed of 40 miles per hour. Above all, it assures you transportation at minimum cost. It holds the A.A.A. Coast-to-Coast Economy Record with an average of 43.28 miles to a gallon of gas. Place your order now for early delivery.

WILLYS-OVERLAND, INC.  
TOLEDO, OHIO

#### Long Silence Ended

Jilted 50 years ago, James Mason of Great Canfield, England, made a vow to isolate himself for the rest of his life in such a way that he would never look upon the face of a woman again and never see of speak to any man except his brother, Thomas. The brother, who is now sixty-eight, two years younger than James, vowed that he would devote his life to the hermit and guard him from intrusions. On two occasions recently Thomas relaxed his vow in order to permit James to be seen by a pension officer and a clergyman he sent for when James suffered a stroke.

#### Laboratory Visitor-Proof

The new home of John Hays Hammond, Jr., now under construction on Hesperus point, near Gloucester, Mass., will be lined with secret passages so that no one may see the inventor enter or leave his laboratory.

We are all temperamental if we wouldn't behave ourselves should we suddenly fall heir to \$300,000.

#### Argument Bothered Him

It was during a trial in an Ohio city some time ago that one of the jurors suddenly rose from his seat and precipitately fled from the courtroom. He was arrested in his flight before he had left the building, and brought back. "What do you mean by running off that way?" asked the judge, who knew the man to be a simple, honest farmer. "It's like this, your honor," said the man earnestly. "When Mr. Hibbert finished talking, my mind was all clear, but when Mr. Carter began all was confused again, and I said to myself, 'I'd better leave at once, and stay away till he's done,' for to tell the truth, I didn't like the way the argument was going, your honor."—Exchange.

We always keep some of our illusions. One of them is that we are fair and just.

Most astounding feature of life is how little we hear of the thousands of words said about us.

#### Has Many Applications

There are three different meanings to the word "yankee." It was first applied to natives or citizens of the New England states, particularly those of old New England families. Then it was applied by people of the southern states to all the people of the northern states, in general. Lastly, it is applied by the people of other countries to all citizens and inhabitants of the United States.

Killing time is often misnamed. It can be really resting.



THOR-O-BRED "LIVE AND LAV" BABY CHICKS  
They live because they are bred from healthy, free range broodstock that have thrived and gained in vigor for generations. They lay because they are from selected and tested high egg power stock. White, Brown and Buff Leghorns, Barred and White Rocks, R. I. Reds, Anconas, Buff Orpingtons, 12c and up, 100% live delivery guaranteed. Postpaid. Member International Chick-Keepers' Association. Write today for FREE Chick Book. SCHWEGLER'S HATCHERY, 215 Northampton, BUFFALO, N.Y.

"EARN \$25 TO \$50 PER DAY"  
U-sual opportunity to form permanent connection with reliable firm. FIRE-FLY CHEMICAL CO., Allentown, Pa.

Thrifty True-to-Name Chicks and Ducklings: Bloomville Hatchery, Bloomville, O.

#### Fast Traveler

The swiftest of all land creatures is the ostrich, it having been known to attain a speed of 60 miles an hour, according to an answered question in Liberty.

#### Modern Miracle

"What rent do you pay?" "I don't pay it." "What would it be if you did pay it?" "A miracle."

Amiable people who don't care anything about you can wear mighty thin.

WANTED LAND  
Twenty acres or more near good growing towns for developing into building lots. Must be on main travel thoroughfare. By our method, we can sell your land, if well located, close to a growing town, in 30 days. We buy or develop it for you. Send full particulars in first letter with a rough drawing of your town and location of land. F. B. BANISTER & COMPANY, 423 St. Paul Place, Baltimore, Md.

Life Insurance Agency for a Real Producer  
Liberal commission contract backed by real service. Territory closing fast, an opportunity to secure representation for yourself. Apply SILLIMAN-KUNKEL CO., 112 S. Fourth St., Philadelphia, Pa.

HOME GROWN RED CLOVER, \$18 per bush. Mixed Red and Alsike, \$14 per bush. Freight paid, bags free. Cashiers check or money order with each order. Sample request. FARMERS SEED ASSN., Lock Box 58, Jeffersonville, Ind.

CHICKS Pure bred, blood tested, free range broodstock. Leghorns, Lophorins, Anconas, 12c. Rocks, Reds, 14c. Wyandottes, Orpingtons, Minorcas, 15c. Black Giants, 20c. 100% live del. Valuable Chick Manual free. Silliman Farm, Box 15, Washington, Pa.

Nut Crops: The north's future soil production. Progressive farmers are planting groves of improved grafted nut trees. Read "Save Your Nut Heritage" and "Nut Grower." J. W. Hershey, Nut Trees, Downingtown, Pa.

Wingold Buff Orpingtons—1st prize winners Madison Square Garden, Cleveland, Pitts-burgh, Great winter layers. Stock average 260. Local market fowls. Stock, Eggs, Baby chicks; catalogue free. F. A. Toetner, Box A, Berea, O.

Small Investment—Quick Returns. Made possible by purch. \$50 Participating Certificate in mammoth poultry develop. Orange Blossom Poultry Farms, Inc., Winter Haven, Fla.

W. N. U., PITTSBURGH, NO. 9-1928.

# WIN \$1,000,000

## Do You Need \$1,000,000?

Think what you can do with \$1,000

Twenty Cash Prizes

### IT'S NEW—It's Different, and It's Loads of Fun

#### HOW FAR CAN YOU FLY?

That's the big question. Lindbergh flew 3600 miles. Chamberlin flew 2800 miles. How far can YOU fly? All you have to do to win is to send in the coupon below, giving your proper name and address so that we can send you our official airplane, called the Treasure Hunter. (About four times as large as the picture above, and without any \$'s written on the wings), and then see how many times you can write the figure 8 on the wing of the airplane that we send you. Isn't that easy enough for anyone? You can write as small as you want and make as many \$'s as you want and then add them up and the sum total of all the \$'s you have written will represent the mileage of your non-stop flight. For example: ten \$'s will be eighty miles, one hundred will be eight hundred miles, etc. The one who has the greatest number of miles will be the first prize winner. In case of a tie, the full prize value will be awarded to each contestant so tied. This is going to be a short, snappy contest, no long waiting, nothing else to do, no list of words to write, nothing else to do except see how many times you can write 8 on the official airplane that we will send you FREE.

This contest closes May 1st, 1928. Don't delay—quick action means \$1,000,000 for you.

MAIL THIS COUPON TODAY

Puzzle Manager, The Gentleman Magazine, 615 West 43rd Street, New York, N. Y. Dept.

Please enter my Name in your Non-stop Prize Flight contest and send me circular of the official Treasure Hunter. Please together with full particulars of the contest.

Name.....

Address.....