

JANUARY CLEARANCE SALE!

Starts Saturday, January 14, at Kusner Blankfeld Co.

Again - the Greatest Sensation of America's Greatest Industry

Again, Chevrolet has created an automobile so far beyond all expectations in the low-price field that it constitutes the greatest achievement of America's greatest industry.

Built on a 4-inch longer wheelbase—offering numerous improvements in performance, beauty and safety—the Bigger and Better Chevrolet marks a spectacular epoch in the development of luxurious transportation at low cost.

The engine is of improved valve-in-head design with alloy "invar strut" pistons . . . hydro-laminated camshaft gears . . . mushroom type valve tappets . . . AC oil filter . . . AC air cleaner and a new crankcase breathing system.

Throughout the entire car similar

advancements are represented—from the four-inch longer wheelbase and the new semi-elliptic shock absorber springs—84% of the wheelbase, to the marvelously beautiful new Fisher bodies in new Duco colors.

Come in and drive this great new car. Drive it through traffic—and get the thrill of its darting pick-up . . . the smooth, certain action of its non-locking four-wheel brakes! Drive it on the open road—and test every point in the speed range for smoothness and roadability! Try it on the hills—and learn the true meaning of Chevrolet power!

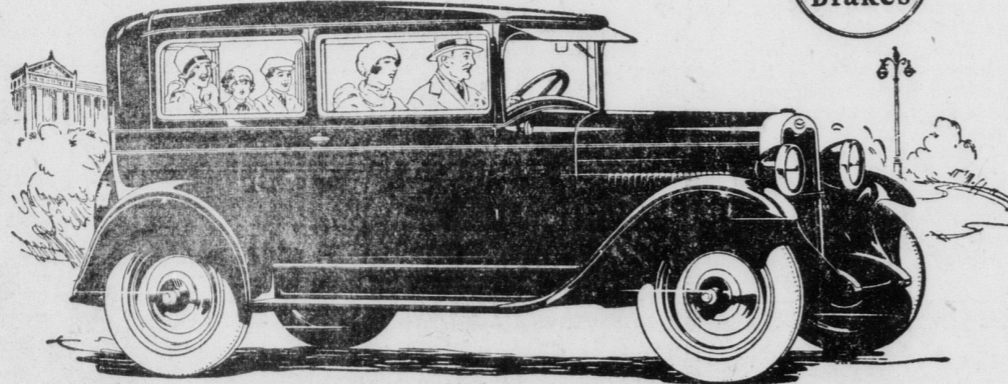
Do that—and you will agree with thousands of others that here is the world's most luxurious low-priced automobile.

Every feature of advanced design demanded in the finest cars now offered in the New Chevrolet! Read this partial list.

Improved valve-in-head motor. New stronger frame 4" longer wheelbase 107". New four-wheel brakes. Thermostat control cooling system. New alloy "invar strut" pistons. New instrument panel indirectly lighted. New ball bearing worm and gear steering. Semi-elliptic shock absorber springs; 84 per cent of wheelbase. Safety gasoline tank at rear. Larger balloon tires 30" x 4.50". New streamline bodies by Fisher. New Duco colors.

Theft-proof steering and ignition lock. A. C. oil filter. A. C. air cleaner. Single-plate dry disc-clutch. New crankcase breathing system. New two port exhaust. Heavy one-piece full-crown fenders. Alomatic pressure lubrication. Vacuum tank fuel supply. Improved Delco-Remy distributor ignition. Combination tail and stop light. Large 17" steering wheel with spark and throttle levers located on top. Rear view mirror.

and
4 Wheel Brakes



CHRISTOFF MOTOR SALES PATTON, PENNA.

QUALITY AT LOW COST

MARION TALLEY COMES TO ALTOONA JAN. 20TH

Prima Donna of Metropolitan Opera Co. Will Be Presented in Concert By The Altoona Music Club.

The greatest musical event of the season will take place in Altoona, Friday, January 20th, when Marion Talley, prima donna soprano of the Metropolitan Opera Company of New York, will be presented in concert by the Altoona Music Club.

Altoona Roosevelt Junior High school auditorium at Seventh avenue and Fifteenth street. Advance tickets are on sale at many towns in the vicinity of Altoona, but mail orders for reserved seats are being received at Winter's Music store, Altoona, and these will be taken care of when the reserved seat sale opens on January 17. Even at this early date the demand for seats has been tremendous and a capacity crowd is expected.

Miss Talley will be assisted by David Sterkin, violinist, and Charles King, pianist, and will present the following program: Midnight Bells . . . Heuberger Mr. Sterkin. Aria: "Ah! Non, Crede Mirarti" ("Ah! Must Ye Fade") from "La Sonnambula" . . . Bellini Miss Talley. a. Lithuanisches Lied . . . Chopin b. Vergeßliches Ständchen (Folk song from the Lower Rhine) . . . Brahms c. When I Was Seventeen (Swedish Folk Song) . . . Lilliebörn Miss Talley.

Aria: "Polonaise"—"Je suis Titania, (Um Fair Titania) from Mignon" . . . Thomas Miss Talley. a. Sheep and Lambs . . . Homer b. When Love is Kind . . . c. The Virgin's Slumber Song . . . Reger d. Pretty Mocking Bird Bishop La Forge Miss Talley. a. Pale Moon . . . Logan b. Sclaniello et Rigaudon Francout Pros. Mr. Sterkin. Beautiful Blue Danube Strauss-La Forge Miss Talley.

MRS. JOSEPH TALONORA. Mrs. Angelina Talonora, aged 52 years, wife of Joseph Talonora, died of a complication of diseases at her home at Bardsboro on Saturday. The deceased is survived by her husband and three children. The funeral services were held at 10 o'clock on Tuesday morning in the Bardsboro Italian church, and interment in the church cemetery followed.

SUDDEN DEATH SUMMONS RICHARD VICTOR PHELAN Richard Victor Phelan, a widower, for many years connected in an executive capacity with the Norfolk & Western railroad, died suddenly Friday morning at his home at Toms Creek, Va. He was a brother of Mrs. R. W. Stewart, London, England; Miss H. Collette Phelan, who makes her home at Mt. Aloysius academy, at Cresson, and Mother Xavier and Sister Evangelist, both of the Sisters of Mercy order, Cresson. The body arrived in Cresson on Sunday, accompanied by Miss Marian Maher and N. D. Maher of Roanoke, Va., the latter a retired president of the N. & W. railroad. Funeral services were conducted at 9 o'clock Monday morning in the academy chapel, the requiem mass to be celebrated by the Rev. Father Owen Gallagher, chaplain. Following the mass, the body was taken to Pittsburg for interment in Calvary cemetery.



PRICES REDUCED

- The Roadster . . . \$495
- The Touring . . . \$495
- The Coach . . . \$585
- The Coupe . . . \$595
- The Four-Door Sedan . . . \$675
- The Sport Cabriolet . . . \$665
- The Imperial Landau . . . \$715
- Light Delivery (Chassis Only) . . . \$375
- Utility Truck (Chassis Only) . . . \$495

All prices f. o. b. Flint, Mich.

Reduced Prices!

We Are Offering Our Stock Of Winter Merchandise At A Great Reduction In Prices! For 10 Days Only. Read Over Items Below And Be Convinced.

Men's Leather Coats, \$14.00 value, now on sale **\$7.45** at

Men's Corduroy Sheep skin Coats, \$14.50 values, **\$9.75** on sale at

Men's Sheepskin Coats, \$10 values, now on sale **\$5.25** at

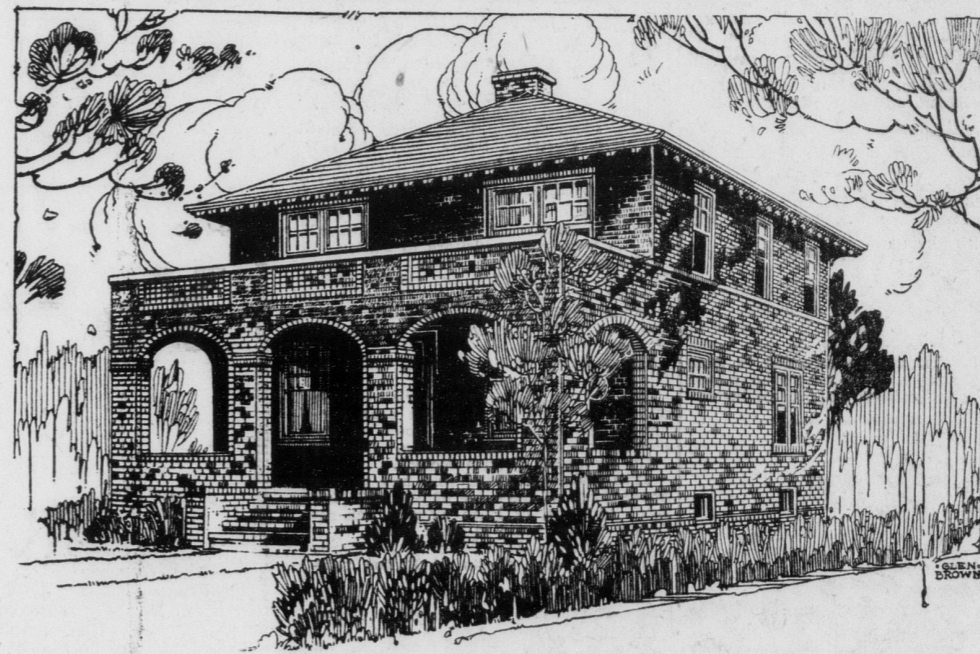
Woolen Blankets, \$11.00 values, now on sale **\$6.95** at

MEN'S OVERCOATS TO BE SACRIFICED AT ONE-HALF PRICE.

There are Numerous Articles not Mentioned here. Take Advantage of This Opportunity and Save

AARONSON'S PATTON, PENNA.

With a Touch of the Spanish Influence



THE ONEIDA—DESIGN No. 10

Arched windows and doorway in the semi-enclosed living porch give a hint at Spanish architecture to this otherwise very plain and substantial home. But it ends there. To complete the effect the peaked roof would have given way to parapet walls and a flat roof, with stucco instead of the vari-colored brick facade which makes possible in a home of this type its greatest charm. This type of home gives the common brick its best opportunity to produce the textural effect desired so much by present day architects.

Color is playing more and more an important part in the construction schemes of the best designers of present day homes. "Lay the brick roughly and mix the colors," is the advice of the architect who best appreciates the possibilities of common brick and works to a definite end in decorative effects. And in its wide range of colorings, and an irregularity that precludes all possibility of monotony in the wall surface.

The common brick is without a peer in the field of exterior materials. Architects generally are fast coming to realize this and to make the most of it.

This home, of the square type, is most economical to build and insures full height ceilings in all rooms, a most desirable feature.

The solid brick porch reduces to a minimum the exposed woodwork which in a brick home is usually the greatest source of upkeep expense. There is little to rot about the exterior of this house, the roof being fire resistant and likewise durable. The lower floor arrangement of living and dining room, made virtually one, and the large kitchen, is ideal from the viewpoint of living comfort. Every room is well lighted and cheerful.

On the second floor this same condition obtains with each of the three bedrooms and the sleeping porch. All are good sized, with ample closets and the bath also is large. It is a fine home for a medium sized family.

The Common Brick Manufacturers' Association, Cleveland, Ohio, can furnish complete drawings for this design. Lead set in brick construction sent upon request.

