

Patton Courier

Published Every Thursday.
 THOS. A. OWENS, Editor & Proprietor.
 Entered in the Post Office at Patton, Pa.,
 as Second Class Mail Matter.
 Subscription Rates \$2.00 per year in Ad-
 vance. Single Copies 5 Cents.

RATE CARD—Legal Notices, \$1.50 per
 inch, or fraction thereof, for 3 insertions.
 Card of Thanks, 50c; Business Locals 100
 per line; Business Cards, \$10.00 per year;
 Display Advertising, 50c per inch; Full
 position, 25 pct. extra; Minimum charge,
 \$1.00. Cash must accompany all orders for
 foreign advertising. All Advertising copy
 must reach this office by noon Wednesday
 to insure insertion. Unsigned correspondence
 will be ignored at all times.

Oklahoma Land Office

Retires From Business

Guthrie, Okla.—The latest land-
 mark to disappear in the frontier in
 the West, and in Oklahoma in particu-
 lar, is the United States land office
 at Guthrie which was closed and dis-
 continued by executive order recently.

"Lack of business" was the reason
 given for the discontinuance of the
 office. All records and what little busi-
 ness remained will be taken to Wash-
 ington and placed in the offices of the
 Department of the Interior.

The Guthrie land office saw its first
 business at noon of April 22, 1880,
 when the famous "run of '80"
 was made into Oklahoma Territory. It was
 the only building for miles. Govern-
 ment agents were on duty ready to
 register claims and issue deeds and
 titles.

From that day forward the little
 office literally did a "land office" busi-
 ness, the city of Guthrie growing up
 around the little shack. The little
 shack has long since gone, but the
 office was housed in the federal build-
 ing at Guthrie.

Early Egyptian Maps

Maps originally appeared among the
 early Egyptians. They were wooden
 tablets on which land and sea, roads
 and rivers were fairly accurately out-
 lined. The evidence of such maps is
 not only furnished in the old Egyptian
 papyrus rolls, but some of the actual
 maps have been discovered. It was
 once contended that the Greeks were
 the inventors of the art of cartography,
 but it has been proved that the Egyp-
 tians and Babylonians antedated them
 in this respect.

A Silly Ass Might

Would you call a donkey a gee-haw-
 logist?—New Haven Register.

Friendly Service

Our chief want in life is some one
 who will make us do what we can.
 This is the service of a friend.—
 Emerson.

**VON STEUBEN'S DRILL
 BOOK FOUND IN OHIO**

Rare Volume Is Found in
 Old Bureau Drawer.

London.—Phantom memories of the
 days of George Washington and the
 establishment of this nation are re-
 vived by the relic of the early days of
 the United States of America found
 in an old bureau drawer by Mrs. Bettie
 Wilson Neville of this city.

The relic is an old book, said to be
 one of the only two copies in exist-
 ence, the other being guarded jealously
 at the United States military academy
 at West Point.

It is the first drill book of the United
 States army, prepared by Baron
 Von Steuben, friend and aid to Gen.
 George Washington at Valley Forge,
 and it bears the publication date of
 1794 and is entitled:

"Regulations for the Order and Dis-
 cipline of the Troops of the United
 States, to which is added an appendix,
 containing the United States Militia
 Act, passed by congress May, 1792. A
 new edition illustrated by eight copper
 plates accurately engraved. By Baron
 Von Steuben, late major general and
 Inspector general of the army of the
 United States, No. 46 Newbury street,
 Boston, MDCCCXIV."

Offered \$1,000 for Find.
 Mrs. Neville says Henry Ford has
 offered her \$1,000 for the book, but
 she intends to keep it, together with
 other old books which she treasures.

Quotations from the book which fol-
 low are particularly interesting to mil-
 itary men today, especially those who
 served in the recent World War.

"The arms and accoutrements of the
 officers, noncommissioned officers and
 soldiers should be uniform
 throughout.

"A company is to be formed in two
 ranks at one pace distance, with the
 tallest men in the rear, with the
 shortest men in the center.

"A company thus drawn up is to
 be divided into two sections or pla-
 toons, the captain to take post on the
 right, covered by a sergeant," and so
 on through all the minute details of
 the army regulations.

Covers of Wood

Rookies were treated to a real, man-
 size code of drilling, some of the regu-
 lations being:

"The position of a soldier without
 arms—He is to stand straight and
 firm upon his legs, with the head
 turned to the right so far as to bring
 the left eye over the waistcoat but-
 tons, the heels two inches apart, the
 toes turned out, the belly drawn in a
 little."

**You NEVER
 change your oil
 if you own a
 Buick**

Tests by Buick at Gen-
 eral Motors Proving
 Ground and by Buick
 owners in every section
 of the world—under
 every climatic condition
 —have proved that you
 need never change your
 oil if you own a Buick.
 Replenishments and
 inspection of the Buick
 oil-filter only are re-
 quired. This is still
 another Buick contri-
 bution to the economy
 and efficiency of motor
 car operation... an-
 other indication of
 Buick's greater value.

BUICK for 1928

Sedans . . . \$1195 to \$1995
 Coupes . . . \$1195 to \$1850
 Sport Models \$1195 to \$1525

All prices f. o. b. Flint, Mich., government
 tax to be added. The G. M. A. C. financ-
 ing plan, the most desirable, is available.



WHEN BETTER AUTOMOBILES ARE
 BUILT, BUICK WILL BUILD THEM

PATTON AUTO CO.

PATTON, PA.

**HOUSEHOLD
 HINTS
 ON
 CLEANLINESS**



By FLORENCE SEDER
 of the Cleanliness Institute

If you keep your soap flakes and
 cleaning powders in covered glass
 jars you can always tell at a glance
 whether they need replenishing.

To prevent soot from accumulating
 on the bottoms of cooking utensils,
 rub with soap before setting them on
 the fire. They will wash off easily.

Leather handbags can be cleaned
 at home with soap and water. Make
 tepid suds with soap flakes or any
 pure, mild soap, apply with a soft
 brush or cloth, and rub dry with a
 clean cloth to restore the polish.

White enamel lavatories and bath
 tubs should be cleaned with soap and
 water, rather than with rough scour-
 ing powders, as long as the finish is
 new and smooth. This method pre-
 serves the enamel from scratches and
 leaves it white and shining.

Wash black garments by immersing
 in warm suds of a mild soap. Do
 not rub soap directly on the material.
 Plunge it up and down until clean,
 using two soapy baths if necessary.
 Rinse several times in warm water,
 then in cold.

Bathe your house plants occasion-
 ally to restore their vigor and fresh
 color. Place the plant in a sink. Add
 enough soap to a basin of lukewarm
 soft water to make it slightly milky.

For Honest Business

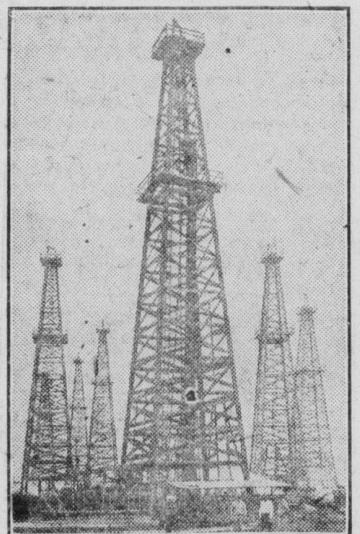


JUDGE GEORGE W. SIMPSON

As presiding justice of the New
 York Commercial Frauds Court,
 he has declared war on the sale of
 bootleg lubricating oil to motorists.

Damage to automobiles from spuri-
 ous lubricants sold by dishonest
 dealers costs motorists many millions,
 he says. A nation-wide campaign
 against this evil is sponsored by the
 American Fair Trade Association.

Cheaper Oil Means
 Savings of Millions
 To Home Owners



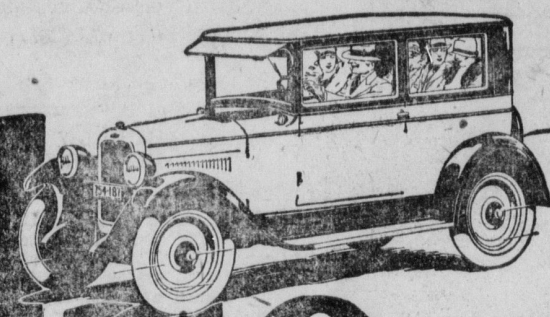
FLOOD OF PETROLEUM

COLOSSAL production of petro-
 leum is predicted as a result of
 the discovery of new oil-bearing
 sands in Oklahoma. The new supply
 is found at a depth of 6,000 feet,
 whereas previous wells have rarely
 penetrated deeper than 4,500 feet. Un-
 limited supply of fuel oil is assured
 for many years to come, and prices
 are now 10 to 20 per cent lower than
 last year. Home owners who have
 adopted oil heating will benefit pro-
 portionately in their annual battle
 with Old Man Winter.

Approximately 500,000 buildings
 were heated by oil last winter. At
 least fifty per cent more will gain
 the group this year. The consumption of
 oil for domestic heating will reach
 two billion gallons this winter, as
 compared with less than one and a
 half billion last year.



Value



that defies
 comparison!

Just think what Chevrolet offers you
 today!

A type of performance that is amazing—
 perfect comfort at every speed—flashing
 acceleration and remarkable handling
 ease—all the marvelous beauty of bodies
 by Fisher—finished in smart colors of
 genuine lustrous Duco—a motor world-
 famous for power and economy—in
 short, advanced modern design in every
 unit that results in the extreme of satis-
 factory economical transportation.

Because these cars are sold at amazing
 low prices, they embody the most out-
 standing motor car value in the world
 today—a value that defies comparison!

The COACH
 \$595

- The Touring or Roadster . . . \$525
- The Coupe . . . \$625
- The 4-Door Sedan . . . \$695
- The Sport Cabriolet . . . \$715
- The Imperial . . . \$745
- Landau . . . \$895
- 1-Ton Truck (Chassis Only) . . . \$495
- 1-Ton Truck (Chassis Only) . . . \$495

All prices f. o. b. Flint, Michigan.
Check Chevrolet Delivered Prices
 They include the low-
 cost handling and financ-
 ing charges available.

**Christoff Motor Sales
 PATTON, PENNA.**

QUALITY AT LOW COST

**BARON'S
 SHOE STORE
 (BARNESBORO, PA.)**

**ANNOUNCE THEIR
 FALL OPENING
 IN PERFECT ACCORD WITH
 FALL'S GARMENT STYLES**

Our careful attention to style correct-
 ness does not lesson the care we give to
 the fitting qualities of our shoes, as
 our customer-friends well know.
 They also know that quality is assured
 in all our shoes.

**Come to Baron's for
 Shoe Satisfaction--Barnesboro, Pa.**



**WERE THEY
 "GOOD OLD DAYS"?**

ONLY a few years ago when
 you lifted your receiver
 to make an out-of-town call, the
 procedure was something like
 this:

"Number, please?" said the op-
 erator.

"Let me have Long Distance."

The Long Distance operator
 came on the line.

"This is Long Distance."

"I want to get Doeville 1234,
 etc., etc."

"Thank you, the operator will
 call you."

A little—perhaps quite a little—
 later your bell rang.

"Ready with Doeville."

And your conversation started.

TODAY—

"Number, please?"

"Let me have Doeville 1234."

And—practically as quickly as on
 a local call—you are connected.

That's the kind of service we are
 giving on out-of-town calls to the
 places most frequently called.

And the area covered by this
 new-era service is constantly be-
 ing expanded.

**THE BELL TELEPHONE COMPANY
 OF PENNSYLVANIA**

G. H. FULMER, Manager



EVER
 WEDNE
 IS
 SUBUR
 DAY
 IN ALTO
 BOOST
 STOR

Where You Can S
 Personal Need ar
 nishings for th
 PLAN TO SHI
 ALTOO
 ON
 SUBURBA
 AND SHARE
 GOOD VAL
 In Seasonable and
 Merchand
 Offered S
 BOOSTER S
 Store Hours: 8:30
 P. M. Saturday u
 STRAND
 PROGRA
 ENTIRE WEEK O
 JOHN BARRY
 "WHEN A MAN
 WEEK OF O
 RONALD COL
 "BEAU GE
 and a supporting c
 big stars
 "Regular Admissi

What to Do With
 Safety Ra
 Boston.—E. M. Dur
 line has solved one o
 great problems: Wha
 old safety razor blades
 ago illness left him
 push a lawn mower
 grass grew all around
 the motor of an old el
 axle connecting a coup
 wheels.
 Through holes he bo
 he ran shafts about 4
 3/8 of an inch in diam
 tops of these shafts he
 connected them by a s
 belt to the shaft of t
 the bottom of the sha
 thin brass discs abou
 diameter and finally b
 blades to the ends of t
 A long lamp cord ex
 from a plug in the hou
 of the mower and the
 tor. The machine was
 could push it easily w
 whirled the cutting g
 green grass 16 1/2 all ar

Flies Change
 Bridget, England—
 horses has changed
 Dresses are longer, wi
 and high necks. Wo
 are popular.

MONEY FOR F
 Long term mortgages o
 rates are afforded to fa
 terms of the Farm Loan
 We have \$250,000.00 to
 chuse of land—payment
 or farm improvements.
 L. E. KAYLOR, Secy
 Bell Phone 183M.

REUEL SOMM
 ATTORNEY-A
 Office in the Good

is a prescrip
 Colds, Grippe, Fl
 Bilious Fever an
 It kills the g

LIME-M
 "Nature's Gro
 Builder."
 Brings best r
 less cost per acre.
 no-caustic, very
 available. Most o
 agricultural lime
 use.
 Grow big cr
 LIME-MARL.
 Write at once
 and full informa
 NATURAL LIME-
 ROANKE,
 (Plant: Charles-Tow