

Borough

Pennsylvania, district of Pat-

year ending

\$43,997.58
812.25
50.00
\$43,360.13

\$34,774.30
6,557.17
50.00
82.50
2,175.40
720.76

\$43,360.13

\$ 147.13
40.00
760.00
218,000.00

\$218,947.13

\$ 83.95
22,500.00
41,463.97
125.99
7,901.00
16,960.77
52.50
12.00
8.02
82.87

\$89,186.07

5.00
.36
0.00
0.00
0.50
0.00
0.00
0.26

\$ 2,204.12

.91
08
.33
.36

36,954.68

.00
.65
.15

585.80

.72
.14
.28
.00
.16

5,563.30

.97
.63
.14
.85
.45

2,250.04

.97
51
00
60

1,406.08

\$48,964.02

.00
09
00

33,413.09

.00
83

6,661.83

\$89,038.94

28, \$147.13



CHEMISTS CREATE DUSTLESS TRACKS

Horses Run Under Ideal Conditions, Thanks to Science.

“TAKING the other horse's dust,” a phrase immemorial in the racing world and running back to the time when the memory of man runneth not to the contrary, seems destined to be obsolete soon, race goers say.

Gradual improvement in caring for the big metropolitan tracks near New York and Chicago, as well as others in various sections of the country, is responsible for the change.

Landscape gardeners have wrestled with the problem for years, not for the benefit of helping the “students of form” but for purely aesthetic reasons. Dustless race tracks, it was agreed, would add greatly to the comfort of the spectators for the best race finish in the world holds no thrills if only the judges can see it.

Today chemicals are freely used in keeping the dust from rising. Chemists had to find something that would not injure the horses' hoofs and at the same time permit thoroughbreds to use their maximum speed.

Calcium chloride, a chemical that absorbs many times its own weight of water, has been used for some years on the smaller tracks at county and state fairs and now is coming into wider employment on the larger tracks.

THIS AUTO PICKS UP ITS OWN ROAD DUST

English Idea Not Needed in This Country, However, Experts Say.

MANCHESTER, England, engineer 15 years ago patented an apparatus to be used on automobiles which would collect its own dust.

As described by Church Howe, then American Consul at Manchester, the device drew the dust into funnel-shaped conduits which ran from the rear of the front wheels to the rear of the back wheels.

The dust was blown into a central box, either by air pressure of the moving automobiles or by a centrifugal fan geared to the driving shaft of the car.

Such an apparatus would have little success in America today, highway engineers point out. Recent improvements in road construction have eliminated the dust problem almost to the minimum in some sections and even old dirt roads may be modernized by applications of calcium chloride.

BACKYARDS GIVE JOY TO CHILDREN

TURN your backyard into a child's playground! That is an idea growing rapidly in various sections of the United States and Canada.

One of the first to do that was George W. Perry, Director of Parks and Playgrounds, of Orange, N. J., who one year ago established a recreation center in the rear of his property. So pleased was he with the success of the idea that he told others of it and today a well-established organization, called the Backyard Playground Association of America, is functioning with headquarters in New York City.

In hot weather the most popular part of the equipment is a garden hose which serves as a shower bath for the children.

Those playgrounds have been salvaged from dismal areas of tin cans and other rubbish. The janitor has been enlisted as groundkeeper and director of activities, and when he is of the alert type, he has worked to make the ground quite in keeping with the more ambitious recreation centers, rolling the earth or pounding it down, firmly and spreading a thin layer of calcium chloride to keep down the dust.

In the congested districts of the larger cities, particularly in New York, the idea has caught on, the playground experts declare.



The Book of Songs

Perhaps you never realized that a Bank Book is a book of songs.

Every depositor who has one of those highly prized books in his possession can tell you that just to leaf it thru and see column after column of dollars saved makes the heart sing with joy.

A dollar starts a saving account and gets you one of these books of happiness. Every dollar saved and entered in it will add another note to your hymn of happiness.

THE FIRST NATIONAL BANK

PATTON, PENNSYLVANIA

G. E. Prindible, Pres. F. E. Farabaugh, V. Pres.
F. L. Brown, Cashier Reuel Somerville, V. Pres.
Total Resources \$2,000,000.00
Capital Paid Up \$100,000.00
Surplus Earned \$100,000.00
A ROLL OF HONOR BANK

666

is a prescription for
Colds, Grippe, Flu, Dengue,
Bilious Fever and Malaria.
It kills the germs.

MONEY FOR FARMERS

Long term mortgages on lower interest rates are afforded to farmers under the terms of the Farm Loan Act.

We have \$250,000.00 to apply to purchase of land—payment of debt or other farm improvements.

L. E. KAYLOR, Secretary-Treasurer,
Bell Phone 183M, Ebensburg, Pa.

Frigidaire

The Old Reliable Electric Refrigerator Made And Guaranteed by the GENERAL MOTORS CORPORATION.

After ten years of manufacturing experience Frigidaire is free from the difficulties of experiment and the price being lower on account of enormous production—50,000 Frigidaires a month. The wisest thing to do is to BUY FRIGIDAIRE NOW. Don't experiment with untried models.

Frigidaire

ELECTRIC REFRIGERATION

L. E. Kaylor, Dealer

Bell Phone 183-M. EBENSBURG, PA.

J. EDWARD STEVENS

FUNERAL DIRECTOR AND EMBALMER
Phone Office and Residence CARROLLTOWN, PENNA.

Here's the Iron you want



never too hot—
never too cool

\$1 For Your Old Iron

SPECIAL OFFER FOR A LIMITED TIME ONLY TO APPLY ON PURCHASE OF THE NEW

WESTINGHOUSE AUTOMATIC IRON

THIS REMARKABLE IRON THAT REGULATES ITS OWN TEMPERATURE

NOW

ONLY \$7.75 WITHOUT OLD IRON

Or 75c Down. Balance Monthly.
Phone Us Today

Penn Central

WILLIAM H. SKILES.

William Hartness Skiles, a resident of Wilmore for over half a century, and a veteran of the Civil war, died at his home there at seven o'clock on Monday morning. Death was due to an attack of paralysis suffered Friday, the second attack within the last two years.

Mr. Skiles was 81 years of age. He served two enlistments in the Union army during the civil war, and took

part in several major engagements. Mr. Skiles was an employee of the P. R. R. for many years. He is survived by his widow and a number of children. The funeral services were held on Wednesday in the U. B. church and burial was in the Lutheran cemetery at Wilmore.

MRS. CATHERINE DIMOND.

Mrs. Catherine Dimond, widow of Jesse Harrison Dimond, who passed away five years ago, died on Monday evening at her home on a farm near Wilmore where she spent practically all of the 87 years of her life.

Mrs. Dimond is survived by a daughter, Annie, on the farm home, a son George, at home, and another son, Andrew, of Juniata.

The World has never known such Value!

- | | |
|--|--|
| Five-passenger 2-door Sedan, Series 115 \$1195 | Five-passenger 4-door Sedan, Series 120 \$1495 |
| Four-passenger Sport Roadster, Series 115 \$1195 | Five-passenger Town Brougham, Series 120 \$1575 |
| Two-passenger Coupe, Series 115 \$1195 | Four-passenger Sport Roadster, Series 128 \$1495 |
| Five-passenger Sport Touring, Series 115 \$1225 | Five-passenger Sport Touring, Series 128 \$1525 |
| Four-passenger Country Club Coupe, Series 115 \$1275 | Four-passenger Country Club Coupe, Series 128 \$1795 |
| Five-passenger 4-door Sedan, Series 115 \$1295 | Five-passenger Coupe, Series 128 \$1650 |
| Five-passenger Town Brougham, Series 115 \$1375 | Five-passenger Brougham, Series 128 \$1925 |
| Four-passenger Coupe, Series 120 \$1465 | Seven-passenger Sedan, Series 128 \$1995 |

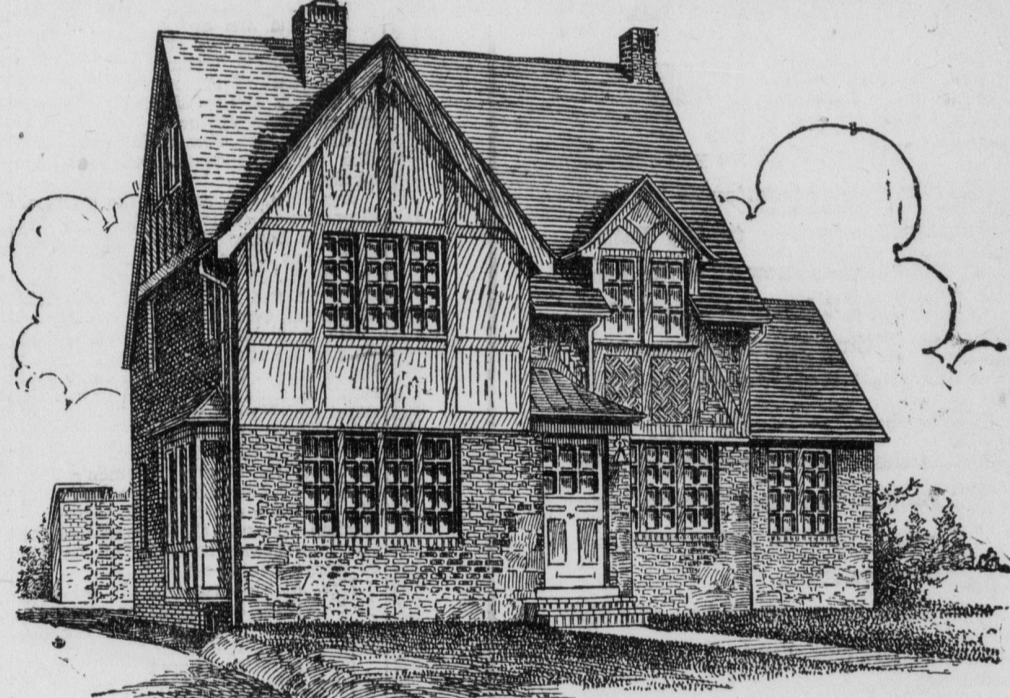
All prices f. o. b. Flint, Michigan, Government tax to be added.

BUICK for 1928

PATTON AUTO CO.

PATTON, PA.

The Kind That Simply Reaches Out and Grips You



THE TUSCUMBIA, DESIGN A470

OCCASIONALLY you see a house that seems to reach out and take hold of you. That is the sort of house this one is. Its appeal is not only swift but lasting. It caught the man who bought it while it was still in the course of construction and the deal was closed before any of the interior finish was begun. And today you could not buy this house for half again what it cost him. It was built in one of the most exclusive residence districts of Cleveland and is of common brick, with enough of timbered stucco and field stone added to provide a very effective contrast and bring out to its best the burned-in beauty of the brickwork.

Convenience of arrangement features the interior. In the entrance vestibule is a handy and desirable coat closet. The living room extends the entire depth of the house, with windows at either end and on the side, an open fireplace, and a sun room connected by a door beside the chimney. Opposite the fireplace a door opens into a passage to the breakfast nook, off which an enclosed stairway leads to the upper floor. Dining room and kitchen are large, well lighted, with the breakfast nook between them. On the upper floor are three sleeping rooms, a sewing room and bath, all opening upon the hall at the stair landing.

The Common Brick Manufacturers' Association, Cleveland, Ohio, can furnish complete drawings for this design set on brick construction sent upon request.

Astronomical.

The sun is a million and a quarter times as big as the earth and 332,800 times as heavy. The size of the fixed stars and the planets varies greatly; some are smaller than the earth, while others are larger even than the sun. The earth revolves completely on its axis every 24 hours, or 365 times a year.

MRS. AMELIA SCITTICCAT.

Mrs. Amelia Scitticat, of Martindale, dropped dead at her home on Monday afternoon shortly after eating a hearty meal. Death was attributed to heart trouble. She is survived by her husband and eight children.

COMING TO PATTON PALMER HOUSE

SEPT. 2nd.
FOR ONE DAY ONLY.
Hours 9 A. M. to 6 P. M.
DR. A. C. SPEER, Specialist.
(Licensed by the State of Pennsylvania.)
Brings the knowledge of forty years of experience in the successful treatment of Complicated chronic conditions.

Dr. Speer, experienced specialist, formerly with National Doctors of Milwaukee, also some years connected with the Philadelphia and Pittsburgh Colleges and hospitals, treats without surgical operations or hypodermic injections, diseases of the blood, skin, and the internal organs, rheumatism, scapula, lung trouble, old ulcers, tape worm, eczema, asthma, chronic constipation, epilepsy, high blood pressure, bed wetting and other morbid affections of the body. Years of experience and the great number of cases successfully treated prove that the methods of the doctor are very dependable. Many people keep on suffering from ailments that might be greatly improved because they cannot afford to go to high priced specialists away from home, and few communities have sufficient numbers of such cases to support a specialist. The doctor has solved this problem by travelling from town to town to meet the sick. He instructs patients recommends a course of treatment, and teaches failing women and men how to take care of themselves at home. To those having ailments of long standing, whatever the trouble may be, and notwithstanding the poor results of former treatments, come and talk it over. Ladies are requested to come escorted. DR. A. C. SPEER (Home Office: Pittsburg, Pa.) adv.

GEO. E. PRINDIBLE PRESIDENT
LESTER LABIMER, V. PRES AND CASHIER
JAMES WESTRICK VICE PRESIDENT
DR. P. J. KELLY VICE PRESIDENT
MYRON S. LABIMER ASSISTANT CASHIER

THE GRANGE NATIONAL BANK

PATTON, PA.

4 PCT. PAID ON SAVINGS DEPOSITS
3 PCT. PAID ON TIME DEPOSITS

DIRECTORS
JAMES WESTRICK DR. P. J. KELLY
F. M. SHEEHAN P. C. STRITTMATTER
E. J. NOON B. J. OYERBERGER
BARTH YOUNG LESTER LABIMER
G. E. PRINDIBLE B. BLANKFELD