

ES
 reasurer's
 \$ 401,680.54
 \$ 401,680.54
 \$ 356,224.80
 45,455.74
 \$ 401,680.54
 ms and
 \$ 20,498.52
 \$ 20,498.52
 tal.
 6,050.12
 2,660.00
 \$ 2,550.12
 nds.
 Borough.
 18.56
 122.61
 160.41
 .50
 237.40
 207.97
 14.27
 4.39
 109.03
 174.34
 67.27
 56.38
 403.95
 18.96
 470.42
 83.09
 204.19
 5.60
 19.47
 \$ 2,379.31
 County
 ment of
 1926, to
 ledge and
 troller.
 1927.
 otary.
 180.00
 642.86
 420.00
 25.00
 1,595.00
 1,580.19
 1,870.30
 1,547.70
 2,047.24
 288.14
 21.60
 165.20
 29,608.22
 151,622.92
 639.95
 151,000.00
 420.00
 151,629.95
 \$151,222.39
 399.62
 107.92
 151,639.95
 t.
 1,418.16
 151,000.00
 132.00
 152,550.16
 157.19
 151,222.39
 151,000.00
 1,140.67
 152,550.16
 2,233.03
 D TO
 VICE
 aking
 e
 calls
 ver a direct
 city and the
 completes the
 completing
 has been
 the calling
 cent of the
 to hang up
 on the line
 nd.
 ast toll ser-
 one officials
 in the ad-
 one art and
 f-town ser-
 telephone
 i of making
 ping to the
 sy to make
 to talk over

THE PATTON COURIER

Published Every Thursday.
 THOS. A. OWENS, Editor & Proprietor
 Entered in the Post Office at Patton, Pa.,
 as Second Class Mail Matter.
 Subscription Rates \$2.00 per year in Advance.
 Single Copies 5 Cents.
 RATE CARD—Legal Notices, \$1.50 per inch, or fraction thereof, for 2 insertions; Card of Thanks, 50c; Business Localis, 10c per line; Business Cards, \$10.00 per year; Display advertising, 20c per inch; Full position, 25c per extra; Minimum charge, \$1.00. Cash must accompany all orders for foreign advertising. All advertising copy must reach this office by noon Wednesday to insure insertion. Unsigned correspondence will be ignored at all times.

RAYMOND D BUCK

FUNERAL DIRECTOR

Phone: Office and Residence.
PATTON, PA.

FOR SALE.

...Nine Room House, including bath room in very good location. For sale at once. Inquire Mrs. W. A. Dinsmore, North Fifth Avenue.

666

is a Prescription for
**COLDS, GRIPPE, FLU, DENGUE,
 BILIOUS FEVER AND MALARIA.**
 It kills the germs.

INSURANCE

THAT'S OUR BUSINESS
**PARNELL COWHER &
 COMPANY.**

PHOTOGRAPHS

**THEY ARE SURE
 TO PLEASE.**

Make an appointment.

M. J. FARABAUGH

**THE
 GRANGE NATIONAL BANK
 PATTON, PA.**

**4 PCT. PAID ON SAVINGS DEPOSITS
 3 PCT. PAID ON TIME DEPOSITS**

DIRECTORS

JAMES WESTRICK PRESIDENT
LESTER LARIMER V. PRES AND CASHIER
JAMES WESTRICK VICE PRESIDENT
DR. P. J. KELLY VICE PRESIDENT
MYRON S. LARIMER ASSISTANT CASHIER
DR. P. J. KELLY
P. C. STRITTMATTER
B. J. OVERBERGER
LESTER LARIMER
B. BLANKFELD



The Book of Songs

Perhaps you never realized that a Bank Book is a book of songs.

Every depositor who has one of those highly prized books in his possession can tell you that just to leaf it thru and see column after column of dollars saved makes the heart sing with joy.

A dollar starts a saving account and gets you one of these books of happiness. Every dollar saved and entered in it will add another note to your hymn of happiness.

THE FIRST NATIONAL BANK

PATTON, PENNSYLVANIA

G. E. Prindible, Pres. **F. E. Farabaugh, V. Pres**
F. L. Brown, Cashier **Reuel Somerville, V. Pres**
Total Resources \$2,000,000.00
Capital Paid Up \$100,000.00
Surplus Earned \$100,000.00
 A ROLL OF HONOR BANK

J. EDWARD STEVENS

FUNERAL DIRECTOR AND EMBALMER

Phone Office and Residence **CARROLLTOWN, PENNA**

REUEL SOMMERVILLE

ATTORNEY-AT-LAW

Office in the Good Building.

MONEY FOR FARMERS

Long term mortgages on lower interest rates are afforded to farmers under the terms of the Farm Loan Act. We have \$250,000.00 to apply to purchase of land—payment of debt or other farm improvements.

L. E. KAYLOR, Secretary-Treasurer,
 Bell Phone 183M, Ebensburg, Pa.



York, Pa., Oct. 23, 1926
 "I had a much better yield of matured corn this year and I credit it to the use of 'AA Quality' Fertilizer. I firmly believe they will grow and mature a much finer grade of corn than many other fertilizers."
 "My yield was 50 bushels to the acre."
 —Wynndham Farms
 By Ross B. Miller, Mgr.

York, Penna., July 17, 1926
 "I have been using 'AA Quality' Fertilizers for 20 years and have been so well satisfied with the results obtained as well as the drilling condition in which the material arrives, that I would not think of making a change. I would recommend 'AA Quality' Fertilizers to all truck growers who want to get their crops matured for early market. The past season I obtained a yield of 92 crates, 32 quarts to the crate, of fine-quality strawberries, on a patch of one-quarter acre."
 —Harry Markey

Fertilizers have to be made exactly right to produce good crops consistently!

WHAT'S the use of sweating to prepare your land; only to have the fertilizers fall down on their job? Why not use old, reliable, time-tested fertilizers in the first place?

"AA Quality" Fertilizers never shirk. Farmers of three generations have used them with outstanding success. And these same farmers have told us that whenever they switched to less reliable fertilizers — they had a bad year! Because "AA Quality" Fertilizers are made for specific crops, they produce unusually heavy, high-quality yields.



The accuracy of their formulas has been tested, year after year, by famous soil and crop experts. Their plant food elements give the young crop a good stand, steady, even growth, and early maturity.

The materials used in "AA Quality" Fertilizers are carefully selected, scientifically prepared, completely mixed, cured and thoroughly remilled. Their mechanical condition is uniformly perfect. They have proven dependable through sixty years of record crops. You can rely on them, year in and year out!

"AA QUALITY" FERTILIZERS

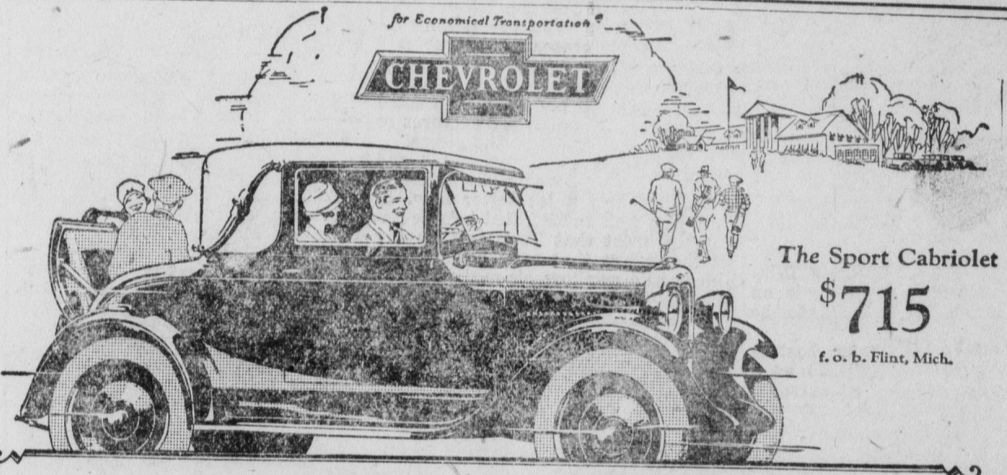
Best known to you under the following brands
**PATAPSCO—BOWKER—COE-MORTIMER
 HESS—LISTERS**

Manufactured only by
THE AMERICAN AGRICULTURAL CHEMICAL COMPANY
 Baltimore Sales Dept., 700 Lexington Building, Baltimore, Md.



sets a
value
 for the
 dollar
 that
always
 is the
Standard
 of
Comparison

WHEN BETTER AUTOMOBILES ARE BUILT
 BUICK WILL BUILD THEM
PATTON AUTO CO.
 Patton, Pa.



STYLE · QUALITY · PERFORMANCE
**Comparable to the
 Costliest Cars**

Beautiful Chevrolet
 in *Camille Henry!*
 --- at these
Low Prices!
 The Touring \$525
 or Roadster
 The Coach... \$595
 The Coupe... \$625
 The 4-Door \$695
 Sedan...
 The Sport \$715
 Cabriolet...
 The Landau... \$745
 1/2 Ton Truck \$395
 1 Ton Truck \$495
 All Prices Fob Flint Michigan
 Balloon tires now standard on all models.
 In addition to these low prices Chevrolet's delivered prices include the lowest handling and financing charges available.

Never was the supremacy of Fisher craftsmanship so evident as in the new Fisher bodies on the Most Beautiful Chevrolet. Paneled, beaded and finished in striking tones of Duco—graced by distinctive, new, full-crown, one-piece fenders and bullet-type lamps, they represent an order of style, beauty and luxury unique in the low-price field. Chevrolet has long been famous for powerful, smooth performance, rugged dependability, long life and economical operation. Yet, in the Most Beautiful Chevrolet these qualities have been enhanced as the result of numerous mechanical improvements. AC oil filter, AC air cleaner, improved transmission, larger radiator, sturdier frame, new tire carrier and gasoline gauge—these are typical of the highly modern design which is winning the world to the Most Beautiful Chevrolet. Because it provides elements of style, quality and performance comparable to the costliest cars, and because it is offered at amazingly reduced prices—the Most Beautiful Chevrolet is everywhere acclaimed as the greatest sensation of America's greatest industry. Come in! See and drive this greatest triumph of the world's largest builder of gearshift automobiles. Learn for yourself what amazing value is offered in the Most Beautiful Chevrolet—how closely, in style, quality and performance, it compares with the costliest cars.

CHRISTOFF MOTOR SALES
PATTON, PENNA.
QUALITY AT LOW COST