

STATE HAS NO MONEY FOR ROAD

Between Ashville and Chest Springs the Commissioners Are Told.

Cambria County's Board of Commissioners met with the State Highway Department officials at Harrisburg last week in accordance to the permanent road improvement No. 221, between Chest Springs and Ashville, that is now in an impossible condition. Commissioners John D. Walker, president of the board, Homer C. George and W. J. ... were accompanied by Harrisburg by Attorney Royal Somerville of this place. They met Acting Secretary of Highways W. H. Conzel and Messrs. Fry and Warren of the Executive office. They stressed the fact that the section of road was on a main route east and west and that the two miles now blocked should be opened up to facilitate traffic and trade. The state highway officials agreed with the Cambrians as to the necessity of the road, acknowledging it was one of the most important routes in Western Pennsylvania, but declared that the state had no money at this time to proceed with improvement.

It was stated definitely that the road would have to wait until 1928, when, it is expected, funds will be available. After June 1, the highway officials stated, Cambria county will be in receipt of the share accorded it of the realignment of funds from the counties that did not claim their allotments and said they believed that Cambria's share would amount to \$30,000. However, it was pointed out this would not be sufficient to start the improvement of the section of 221. Both the state highway and the Cambria County Officials agreed that under present conditions there was no money available to improve the section under discussion.

President of the County Commissioners, John D. Walker, stated that during the conference the question of the proposed improvement of the Haws pike came up. The state officials declared that while the pike is to come under state supervision as a secondary highway June 1, nothing could be done in the way of improvement other than to use the drag this year, the same work as is done on other secondary highways.

"Neither the Haws Pike nor any other secondary highway route will be built by the state until the county commissioners of the counties affected provide 50 per cent of the total cost," said Mr. Walker. "Even if Cambria and Westmoreland counties should provide this 50 per cent of the cost this year nothing would be done this year or next, because the state highway department has allotments made for primary roads and secondary road construction that will not be undertaken until 1928. The money is not available now, either from the state or the county. The Craner Pike, of course, comes under the same conditions and it cannot be permanently improved until 1928, and then only by Cambria and Indiana counties providing one half the cost."

The county commissioners also visited the Welfare Department, taking up the matter of providing a new Cambria County Children's Home. Two grand juries have recommended to the court the necessity of a new home. The Commissioners contemplate the employment of an architect to prepare plans and furnish estimates. If a new home is decided on it will be located on grounds purchased last year as an addition to grounds at the county home. If the architect finds it feasible the present children's home will be enlarged. On either project the Commissioners, with limited funds available, will endeavor to save as much money as possible and still comply with the recommendations and requirements of the late Welfare Department.

CANDIDATES TO DRAW LOTS FOR POSITIONS ON PRIMARY ALLOTS

Interest on the state wide political campaign is centering at Harrisburg on Thursday and Friday of this week when the candidates or their proxies will draw their places on the primary ballot. In all contests where more than one person has filed nominating papers lots will be drawn to determine their place on the ballot.

The first thing to be settled this Thursday morning will be whose name will top the list of Republican U. S. Senator aspirants. By the withdrawal of Geo. H. Rowley, of Greensburg, no drawing will be necessary on the Democratic ticket, but on the Republican side Gov. Pinchot, Senator Peper and Congressman Vore or

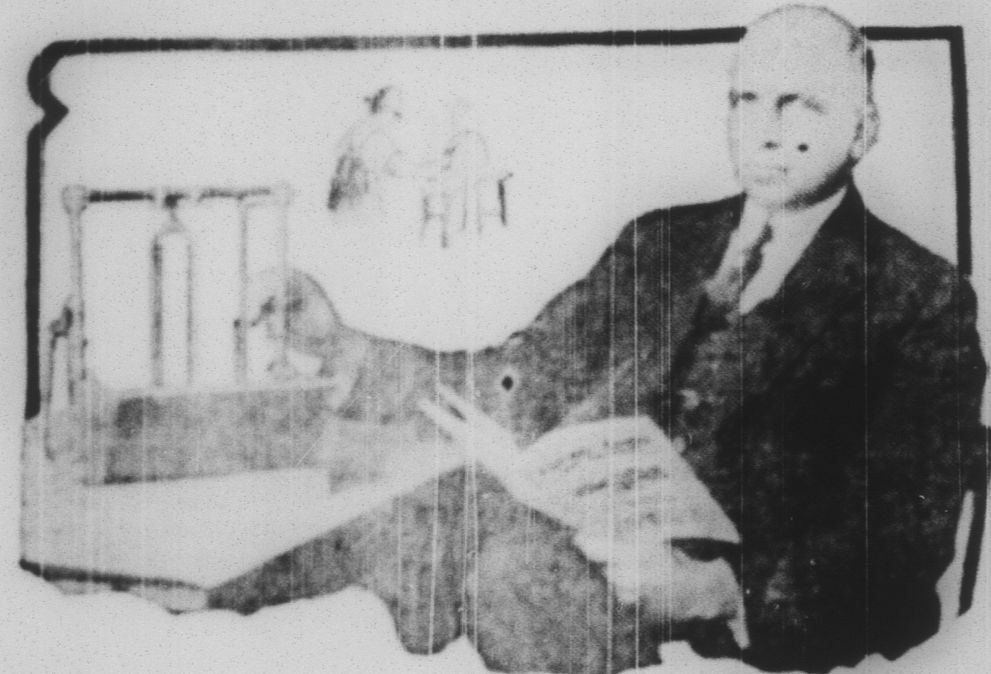
Raise strong healthy chicks on FUL-O-PEP CHICK STARTER

No wonder chicks live and grow on Ful-O-Pep Chick Starter. Its food is whole-some, natural. And it contains both Cod Liver Oil and God Liver Meal, too. Feed it the first six weeks, and see how it pays!

Made by The Quaker Oats Company

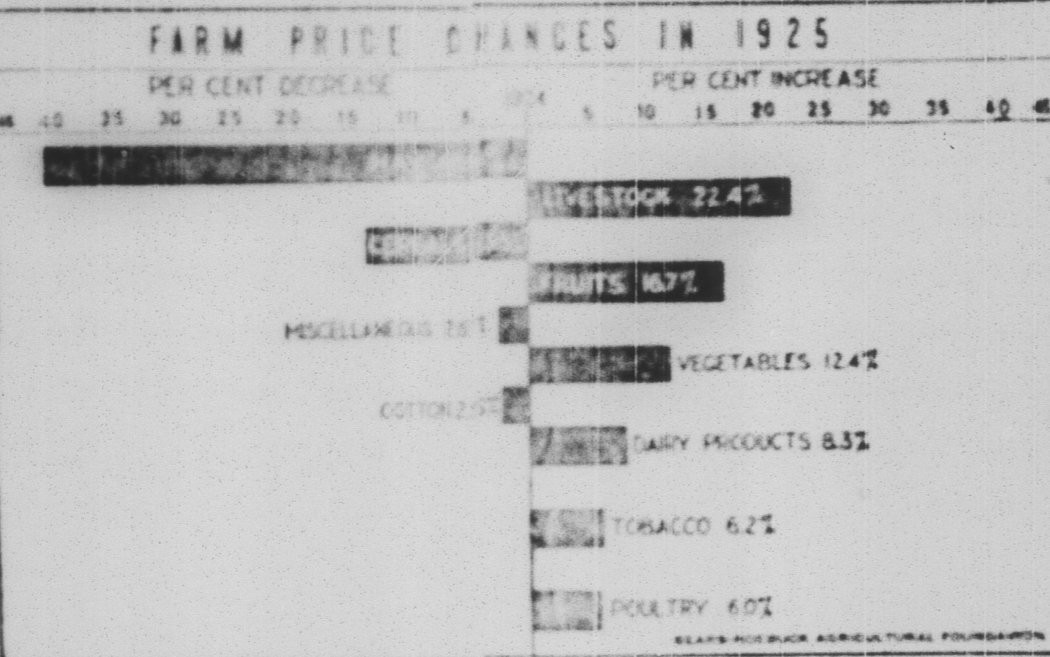
F. E. Farabaugh PATTON, PA.

"Handy Andy on the Farm" Now Works on the Air



"HANDY ANDY," genial genius of Farm Mechanics magazine, drops in every Wednesday noon at WLS the Sears-Robinson Agricultural Foundation station, Chicago, and tells his farm audience all about work-saving and labor-saving devices. He gives a word picture on the air, even explaining how to make them. One day he describes a device to help father do some one of his jobs more easily. "Handy Andy" is a cheerful and helpful chap; always suggesting something on the farm, taking in the way of simple mechanics for lessening farm and household work. Back at his office he is F. S. Noble, but in WLS studio he is only known as "Handy Andy on the Farm."

Farmers Income for 1925 Shows Rise in Prosperity



While farm production, measured by a proper relationship to consumption, is a whole, within the Sears-Robinson Agricultural Foundation American agriculture has been more properly balanced during the past year than in any other year, and is showing resulting correct proportions. Only three staple farm crop groups, reports the Foundation, showed a decrease in gross farm prices for 1925 as compared with 1924. The crops in these were wheat, cotton, corn, wheat and one or two small miscellaneous crops. On the other hand the products which increased substantially in price for 1925 over 1924 were cattle, hogs, sheep, fruits, vegetables, fluid milk, butter, cheese, tobacco, poultry and eggs.

The American farmer is beginning to place some figures on the right-hand side of his ledger for the first time in five years and renewed feeling of financial prosperity, due to increase of farm prices, is being reflected in the business and industrial operations of the entire country.

Their representatives will pick for the pieces.

Not on the Republican ballot this year will mean something most observers agree. The same will hold for the gubernatorial election on both the Republican and Democratic tickets.

That position has been figured already as being worth 50,000 votes and the candidate being fortunate to secure that position in this closely contested campaign may have a decided advantage over his opponent.

Stump speaking soon will be the order of the day by all the candidates between this and the primary, May 18. A few of the aspirants for office have been going about over the state for weeks addressing meetings, but the active campaigning is not yet under way.

Considerable interest is attached to the tour planned by the governor in his fight to get the senatorial nomination on the Republican ticket. His foes will follow this morning closely with a view of judging his strength in the districts visited, while his own campaign managers also will be an

come under the rigid inspection of the same division in order that the necessary sanitary and disease precautions are taken and maintained.

But official interest in this matter can only go so far. Many people in spite of all that can be accomplished by Departments of Health to prevent disease either because of their own personal carelessness or that of someone else.

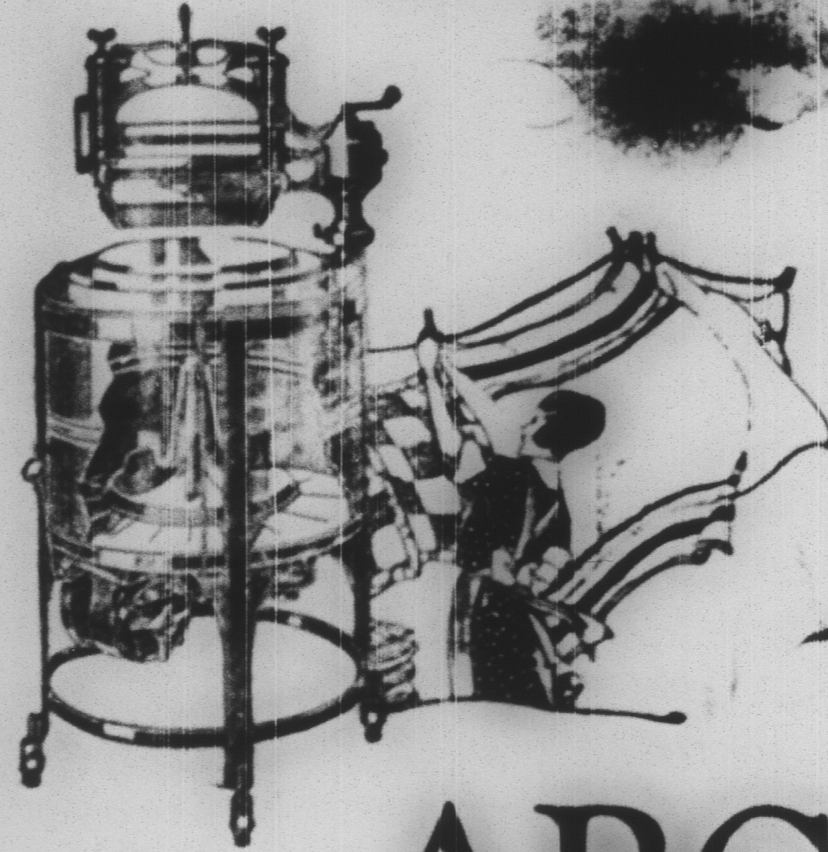
Typhoid fever is usually caused by an infected water supply and sometimes by bad milk. The wells on many farms and in some small towns frequently do not produce water as safe to drink as it should be. However, thousands of gallons of this very type of water will be consumed by the Pennsylvania travelling public during the summer months, which necessarily calls for caution.

Medical science has developed a preventative against typhoid fever. It was used extensively during the war with excellent and most successful results. Typhoid fever immunization is a personal preventative which the traveller absolutely requires if he is to be freed from this disease to be eliminated.

This year the state of Pennsylvania has already had three serious epidemics in different parts of the state. From present indications there appears to be a justification for the statement that for some reason the possibility of contracting typhoid fever appears to be greater now than it usually is, considering the season of the year.

If you are contemplating a trip in this state, this country, or abroad, do not fail to take advantage of typhoid fever immunization. Visit your doctor for the details. Typhoid fever kills. At best it makes a serious invalid for many weeks. Why take un-

Announcing- Amazingly Generous Offer



ABC DOUBLE A Electric Washer

For a limited time only, you get, absolutely free, a six dollar electric iron with this Double A Electric ABC Washer.

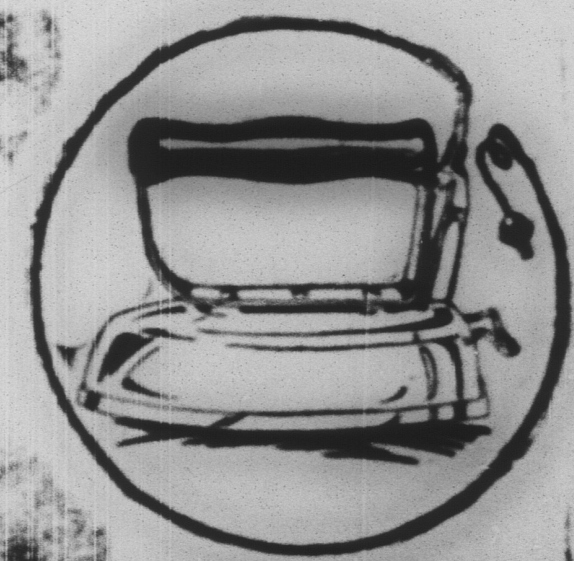
Without paying a single penny try this ABC in your own home.

Use it absolutely free for ten days. Get it for this week's wash, and also do next week's wash with it. Our demonstrator will come out and help you wash, explain the marvelous new ABC Double A features, without any cost to you.

If, after using the ABC Double A any way you see fit during the ten days, you want to buy it to take the work out of wash day for years to come, just pay \$5 down and only \$3 a week.

Pay for it while you use it.

We are able to make you this startlingly low offer because of a special introductory arrangement with the manufacturer. Therefore, this offer is limited. It lasts but a few days on only a certain number of ABC new Double A Electric Washers. Don't be disappointed. Get in on this wonderful offer. Get the free iron, specially low payments, and absolutely free trial by phone today.



FREE!

This \$6 Electric Iron, given FREE with the new ABC Double A Electric Washer as part of this astonishing offer.

Penn Central Light & Power Co.

Both Phones Patton, Pa.

necessary chances? He answered, Now is the time.

WITHDRAWALS ARE NOT EXPECTED AT THE CAPITAL IN PRIMARY CONTESTS

Pennsylvania's spring primary campaign entered a new phase Wednesday with the time having expired for the filing of nominating petitions to get places on the ballot. Candidates have until next Monday to withdraw from the race, but from present indications there will be no quitting for the major offices at least.

Between now and the election May 18th scarcely a community in the state will be missed with a political gathering of some sort by the candidates. Candidates for the most important offices already have opened headquarters and are making tours of the state, while every legislative district this year will nominate candidates on the various tickets and also the terms of 25 senators must be filled this fall.

Workers for the various senatorial and gubernatorial candidates are very optimistic about the chances of their favorites. With the entrance of Philip Dewey, of Gaines, master of the state struggle, for the Republican nomination as governor many see an alliance with Gifford Pinchot, who is after a set in the senate.

The Mellon wing of the party has gone on record as favoring George Wharton Pepper and John S. Fisher of Indiana, for governor. Congressman W. S. Vore of Philadelphia, also is after the party nomination for the post and, according to reports reaching Harrisburg, much of his organization's support will go for F. E. Beidelman, of that city. In addition there are several other candidates but it is not anticipated they will offer

any formidable opposition to the gubernatorial candidates mentioned. The other trio will be battling for the seat in the U. S. Senate.

BRIEF ITEMS OF TIMELY INTEREST

An ancient superstition is that the bread and cake baked on Good Friday and preserved were specifics against any disease occurring during the year.

In Cornwall the people believe that if they remove the bees from their hives on any other day than Good Friday, death will surely come to those useful and industrious insects.

In England in olden days the most popular dish of the Easter Menu was a red herring "on horseback." The effect was obtained by the cook arranging the herring on its tail in a corn salad.

In old England there is a superstitious belief that if the wind is east on Easter day it is a wise plan to draw water and wash in it, as by this means one will avoid the various ill effects from the east wind throughout the year.

Some years ago in England a remarkable illness was carried out by indulgent parents, who, on the occasion of their daughter's marriage gave her an Easter egg nine feet high and 19 feet in circumference. It was filled with a complete and costly trousseau.

SPANGLER GIRL TO ENTER SISTERHOOD

A religious reception will take place this Thursday afternoon at Mt. Aloysius Academy at Crosson, when Miss Anna McKivigan, formerly of Holy Cross Convent at Spangler, will be one of the candidates to embrace the life of the Sisterhood of Mercy.



Trusses

THE UNCLE SAM IS THE TRUSS SUPREME—It does for those who are Ruptured what no other Truss does as it can do—it holds rupture in a manner to prevent the intestines from moving from their normal position inside the body. Other Trusses do not do this. Come in and let us show you why they do not and why and how the Uncle Sam Does it. You should not get an idea that the Uncle Sam Truss is like any other Truss—IT IS NOT! IT DOES NOT EVEN MAKE THE PRESSURE WHERE OTHER TRUSSES DO. There is an anatomical reason for this. Have the Uncle Sam Truss demonstrated to you free. No mail orders; meet us face to face. Keep this ad.

Fitted Only By C. F. BOLLINGER

RUPTURE SPECIALIST

Office Hours: 10 to 12—1:30 to 5.

PHONE OR WRITE FOR APPOINTMENT

Phon—Office 1-32

Residence 25-3711.

504 WASHINGTON STREET.

Second Floor

Johnstown, Pa.

Bids for the leasing of the Patton

The young ladies will receive the garb of the order in the convent chapel at 3 o'clock. Miss McKivigan was one of Spangler's highly reputed school teachers and is a person of irrefragable character and well fitted for the vocation she has chosen.