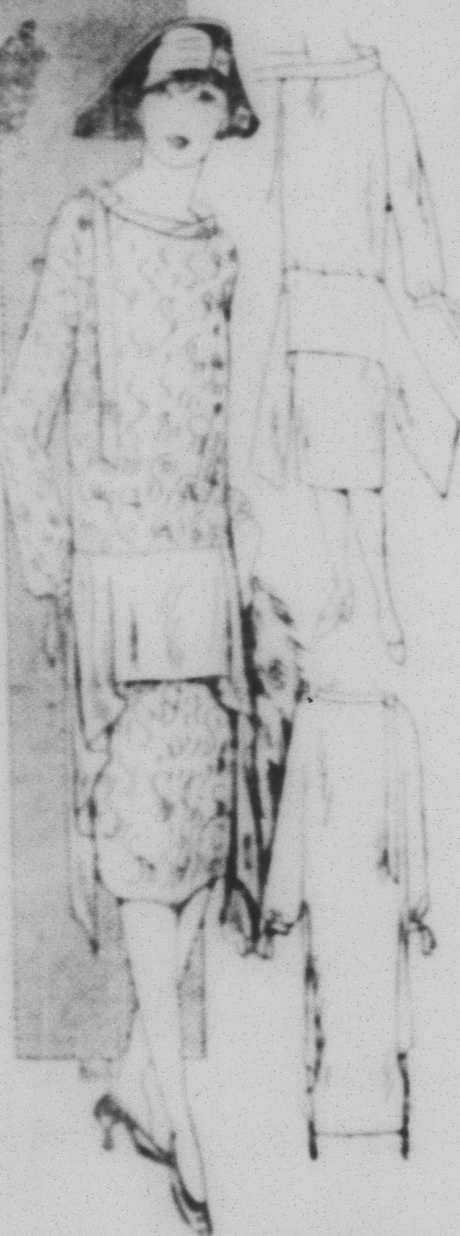


Practical Instructions in HOME SEWING
By Ruth Wreth Spears



GRACEFUL TRIMMINGS
In the model that I have sketched here navy blue brocade is used for the body of the dress. The trim, collar, the narrow tie cuffs and the main drapery are all made of strips of plain navy blue crepe de chine. The small sketch at the upper right shows the process of adjusting the trimming pieces. The neck and cuffs are made double. The party which cascades in such graceful lines is made of a straight strip of material two yards long and twelve inches wide. The shape of the trim pieces are all plotted. The material is next pinned and then tacked across the front of the costume as shown, allowing ends to hang free.

QUIZ



Editor's Note—Through special arrangement with the Educational News Co., this newspaper now offers its readers this interesting feature, QUIZ, being extracts from that book, endorsed by Eugene C. Gilmer, Director of Extension Activities, New York Board of Education. These quizzes will be found interesting as well as instructive.

PUZZLE No. 11
WEAT AM IT?—I am the middle of England. I am also found in other countries and states: Ireland, Scotland, Delaware, California, North and South Carolina. Every one is indebted to me. Without me you would have no pleasure. I am very friendly; belong to a family of twenty-six and am its tallest member.

Puzzle No. 12
A farmer once owned a field in which 7 trees were planted in the positions as shown in the sketch. He wanted to divide the field into seven portions by drawing three straight lines so that each portion would contain one tree. How did he do it?

Puzzle No. 13
What is the best state in the U. S. in a food? Which is the most religious? The best state in haying time? Good state for the untidy? Best state to cure the sick? The father of states?

Puzzle No. 14
A L L O
The four letters shown above represent a simple sentence of three words. Although the sentence is a correct one, it does not refer to anything. What is the sentence?

Read your answers to this newspaper. The first five subscribers to each set of puzzles will receive ten credits when each winner has obtained 100 credits he will be entitled to a "GIFT CERTIFICATE" worth up to \$25.00 credits will entitle the winner to receive an attractive prize and also have his name printed on the honor roll.

CONTROLLER'S OFFICE
Ebensburg, Pa., November 28, 1925.
SEALED BIDS: Up until 11 o'clock a. m., Friday, December 11, 1925, sealed bids will be received at the office of the County Controller for 140 bank transport of assessment books according to plans and specifications on file in the office of the County Commissioners.

all bids. Envelopes containing bids should be plainly marked "TRANSCRIPTS," JACOB M. HOFFMAN, County Controller.
An hour spent in the open each day will make the homemaker very able to carry her cares with a joyous spirit.
One half teaspoonful of baking soda dissolved in a glass of cold water will check a cold in the first stages.

GRAND THEATRE PATTON, PA.
Tomorrow - Friday
EMERSON HOUGH'S
North of 36
With a great cast including JACK HOLT, LOIS WILSON, ERNEST TORRENCE.
The great state of Texas coming into the control of the "Carpetbaggers" in the dark days following the Civil War, one of the large ranchers saves herself and points the way to others when they undertake a great cattle drive all the to Abeline, Kansas. Perils of fire, flood, Indians, and bandits combine to make their journey a most difficult one. A real chapter of the history of our nation.
MATINEE AT 3.45 Adm. Matinee: 10c, 15c & 25c
Adm. Evening: 15c and 35c

SPOT CASH STORE
Where you can get all good things to eat at a big saving.
Sugar, best granulated, 10 lb. 1.25
Sugar, best granulated, 10 lb. 1.00
for 50c, with other goods.
Buckwheat flour, 10 lb. 75c for 45c
Chocolate, Wal. Bakers cake 20c
Lard, Swift's Silver Leaf, no better, 2 lb. for 45c
Tobacco, in pound cans, 50c
Peaches, DeMonte, brand, large can for 30c
Strawberry Wheat at 11c
Flour, Swansdown, per pkg. 20c
Catsup, Heinz, large 35c size, our price 27c
Fresh Eggs and Country Butter at lowest market prices.
Table Raisins, in packages, Canned Cherries, Pineapple and assorted fruits, stuffed dates and figs, Dried Apples, Dates, Uttern, Mince Meat, Fruit Cakes, neat bottles of Glano Queens, stuffed, Plum Pudding at low prices.
Beans, Lima, 18c
Raisins, finest grown in California, 4 pounds for 40c
Cherries in bottles at 2 for 25c
Apples, Delizia, 4 big ones 25c
FOR CHRISTMAS
Walnuts, balled, the Jumbo kind every one good 45c pound.
Wafers, all new, 30c, 35c, 38c.
Peanuts, fresh roasted Jumbos, only 18c pound.
Mix Nuts, Nigger Toes at lowest prices.
CANDIES, ALL FRESH AND PURE.
Mixed Candies 15c pound.
Chocolate Drops, good, 15c pound.
Hard candy, 20c to 25c pound.
Chocolates, assorted, 35c to 50c pound.
A five pound box of assorted Chocolates for \$1.39.
Clear Toys 18c pound.
BUY HERE AND SAVE.



Gifts for the Home

Consider well the trifling things you may buy for Christmas Gift Giving. The most precious gift of all is **FURNITURE**. It never wears out its welcome, becoming more treasurable day by day. Here are suggestions that mean much to you from a sentimental as well as a purse value standpoint.

Gift Suggestions		Gift Suggestions	
FIRESIDE CHAIRS	CARD TABLES	CHILDREN'S REED ROCKERS	DAVENPORT TABLES
CEDAR CHESTS	END TABLES	TRICYCLES	SPINET DESKS
BRIDGE LAMPS	PILLOWS	AUTOMOBILES	CONSOLE MIRRORS
FLOOR LAMPS	GATE EG TABLES	DOLL CARTS	ROCKERS
TABLE LAMPS	SMOKING STANDS	SCOOTERS	BLANKETS
SEWING TABLES	TELEPHONE SETS	WAGONS	KITCHEN CABINETS
RUGS	WINDSOR CHAIRS		PICTURES

What Is Home Without A LIVING ROOM
AND WHAT IS A LIVING ROOM WITHOUT BEAUTIFUL AND CHARMING PIECES IN IT? OUR LIVING ROOM SUITES CANNOT BE MEASURED IN DOLLARS YET THEY CARRY A DOLLAR PRICE BECAUSE YOU WANT A COMFORTABLE AND BEAUTIFUL SUITE AND WANT TO PAY A REASONABLE PRICE. PAY US A VISIT. WE WILL BE GLAD TO SHOW YOU.

Living Room Suites par excellence

BUCKS'
"THE STORE OF BETTER HOMES" SOUTH FIFTH AVENUE, PATTON, PA.

MARVELS SHOWN IN THE BRUNSWICK NEWEST MODEL
The Brunswick Blake Colleser Company, makers of Brunswick Radiolas have been giving demonstrations in the cities of their latest invention, the Panatrope, a new sound reproducing musical instrument, which differs from the phonograph in many important respects. Where, as the phonograph is limited to reproducing sound waves between 1000 and

2000 per second, the Panatrope reproduces sound waves from 100 to 7000 of 8000 per second, revealing with accuracy every pitch to which the ear is sensitive. The results produced to be equally satisfactory whether in reproduction of works by orchestra, voices, piano, strings or even by harpist.

In the course of a demonstration one of the new records is first played on a Brunswick phonograph and then on the Panatrope. The difference in the beauty and volume is extraordinary. Every type of music is its heard. Every type of music is played, giving the new instrument an opportunity to exhibit its ability to reproduce the finest and the delicate quality of its tonal effects.

The machine is ready a wonder, and music lovers are awaiting its introduction in this section.

NANTY GLO MEN ARE HELD FOR COURT, ELECTION CASE
Charged with violation of the election laws in issuing false tax receipts, on which a number of non residents of the borough of Nanty-Glo are said to have voted at the last general election, Hugh Kelly, Nanty-Glo tax collector, and Thomas McDermott also of Nanty-Glo, were held for the next term of court, following a preliminary hearing before Justice of the Peace Jas. P. Rowland in Ebensburg. Each defendant posted bail in the amount of \$300.

The prosecution was brought by County Detective G. E. Whited, who conducted an investigation of the election at Nanty-Glo. Whited testified that Kelly admitted to him shortly after the election that one of his tax books had been missing for several days and when it reappeared a number of blanks had been taken out of it.

County Detective Whited introduced into evidence five or six of the altered tax receipts. While the number of fraudulent receipts actually issued in Nanty-Glo was not brought out in the testimony, it was learned that the commonwealth's investigators found evidence indicating that more than 25 such receipts had been issued. Using these receipts, it is claimed, a number of people not eligible to vote in Nanty-Glo at the last general election, had cast ballots.

Nanty-Glo at the last general election brought to a conclusion the most bitter local political fight in its history. Independent opposition was developed against Burgess Harry Carnahan and others who had won nominations on all tickets at the primaries. The independent forces were defeated at the general election and Nanty-Glo polled the largest vote in its history, the total vote being nearly equal to the amount eligible to vote in the borough.