

Original Price Tickets on all Garments. You can see at a glance the amount you Are Saving.

MIDSUMMER

Original Price Tickets on all Garments. You can see at a glance the amount you Are Saving.

Clearance Sale!

STARTS THURSDAY, JULY 16TH. THE SALE THAT'S DIFFERENT, WHERE EVERYTHING IS MARKED IN PLAIN FIGURES—AND ONE PRICE TO ALL. CONTINUES AS LONG AS LOTS LAST.

INTRODUCING MANY NEW PURCHASES AT REMARKABLE SAVINGS. CLEARING AT DRASTIC REDUCTIONS ALL STOCK LEFT FROM A MOST SUCCESSFUL SEASON.

STOCKS ARE UNUSUALLY CLEAN—in fact we visited the market and secured from overstocked manufacturers many special lots to assure you a good selection.

Complete Clearance

Of Summery Stocks, Ready to Wear Millinery, Dresses for Women
Save 20, 30 and 50 Per Cent!

MEN—

Cool, comfortable, perfect fitting SUITS.
\$13.50 TO \$29.50

SHOES

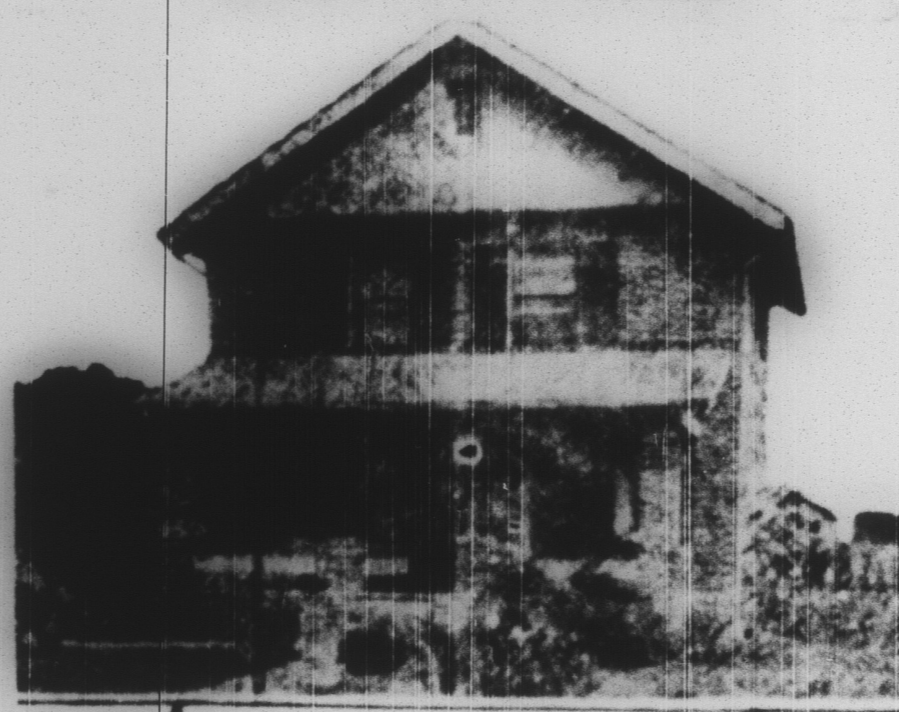
Reduced, and regrouped for speedy disposal. Many at HALF PRICE. On most you save ONE-THIRD.

REMNANTS

ALL SUMMER FABRICS REDUCED AND THOUSANDS OF REMNANTS OF FINE WASH FABRICS AT TREMENDOUS SAVINGS.

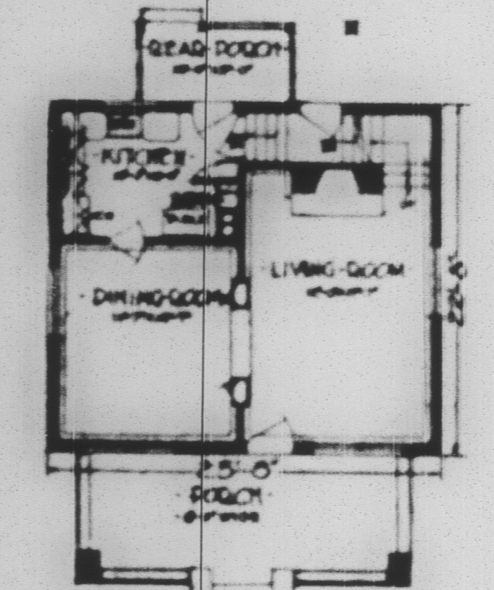
Reliable Quality **Scollon**
COMMUNITY STORES
BARNESBORO - PA.
OUTFITTERS FOR MEN, WOMEN AND CHILDREN
SHOPPING CENTER FOR 40,000 PEOPLE

SNUG AS A BUG IN A RUG



THE OTOE—DESIGN A-600

Building a brick house today for less than \$7,500 would be regarded by most people as an impossibility.



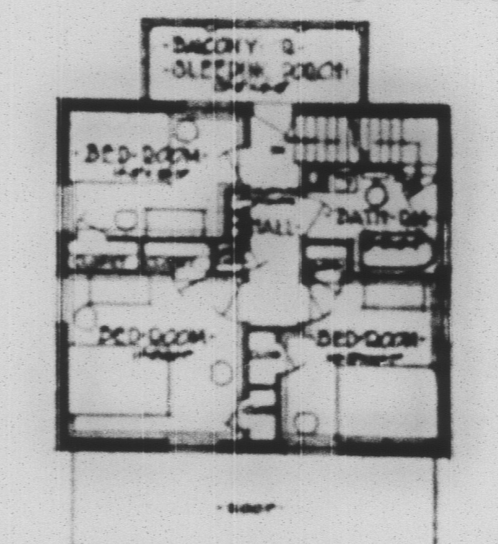
Yet this surprisingly roomy little house can be built of common brick for as low as \$7,500 in some localities and anywhere in the country for a maximum of \$7,800. And moreover it can be accommodated, if desired, upon a very narrow lot. The house might be placed nicely upon a 10 foot lot and still afford ample room for a driveway to the rear. Its aggregate width is a trifle less than 26 feet and the interior arrangement is such that the rooms are all considerably large. It has more than the average of porch room, there being in addition to the large porch in front, another in the rear with a sleeping porch above. Large windows give well lighted rooms throughout.

This is the sort of house that appeals to the man of limited means and income. The small home owner is particularly interested in having the home he usually makes through some sacrifice to build, represent the

maximum value of his expenditure. He wants it, if he is ever forced to part with it, to have the highest possible resale value. This home will have that.

In addition to being fire resistant, of substantial permanent construction and easy to maintain it is exceptionally well planned. Both the living and dining room, looking out upon the porch, are of good size, and well lighted by large windows. Connected by an open doorway they can be thrown, on occasion, into virtually one room. At the rear of the living room is an open grate with brick mantel, the stairway leading up behind the chimney partition. The kitchen is of good size.

On the second floor are three bedrooms and bath with an ample sleeping porch off the stair landing. The smallest of these bedrooms is 8 by 11 feet and all are well supplied with closet space. Altogether this



is one of the most compact, content and well arranged designs we have offered.

The National Brick Manufacturers Association, Cleveland, Ohio, has prepared complete drawings for this design. Leaflet on brick construction and spot request.

GEO. E. PRINDIBLE, President
LESTER LARIMER, Vice President and Cashier
JAMES WESTRICK, Vice President
DR. P. J. KELLY, Vice President
MYRON S. LARIMER, Assistant Cashier

The Grange National Bank, PATTON, PA.

4 Pct. Paid on Savings Deposits
3 Per Cent Paid on Time Deposits

DIRECTORS:

JAMES WESTRICK, DR. P. J. KELLY
T. M. SHEEHAN, P. C. STRITTMATTER
C. J. NOON, R. J. OVERBERGER
BARTH YOUNG, LESTER LARIMER
G. E. PRINDIBLE, R. BLANKFELD

HOW'S THIS?

HALL'S CATARRH MEDICINE will do what we claim for hard your system of Catarrh or deafness caused by Catarrh. HALL'S CATARRH MEDICINE consists of an ointment which quickly relieves the catarrh inflammation, and the Internal Medicine, a Tonic which acts through the blood on the Mucous Surface, thus assisting to restore normal conditions. Sold by druggists for over 40 Years. P. J. Cheney & Co., Toledo, O.

KODAK FINISHING

Prompt Service
Your Name for Price List, etc.
Try Our Enlargements
M. J. FARABAUGH, Photog
CARROLLTOWN, PA.

666

TOUCHING POEM.
One touch of nature makes the whole world kin.
One touch of humor makes the whole world grin.
One touch of pathos makes the whole world one.
One touch for money sees us all on the run.

is a prescription for COLDS, GRIPPE, FLU, DENGUE, BILIOUS FEVER and MALARIA. It kills the germs. Locally at Forester Drug Store

Raymond D. Buck Funeral Director

Phone, Office and Residence. PATTON, PENNA.

'PUBLIC REGULATION' As Applied To Your Business

YOU FREQUENTLY HEAR THE EXPRESSION, "PUBLIC REGULATION." BUT DOES THAT PHRASE REALLY HAVE ANY VIVID MEANING FOR YOU?

LET'S SEE WHAT IT WOULD MEAN IF APPLIED TO YOUR BUSINESS.

SUPPOSE SOME PUBLIC AUTHORITY TOLD YOUR COMPANY WHAT PRODUCT IT MIGHT MAKE, WHAT QUALITY OF PRODUCT IT MIGHT OFFER FOR SALE, WHAT PRICE IT MIGHT CHARGE, HOW MUCH CAPITAL IT MIGHT HAVE INVESTED IN ITS BUSINESS—THEN YOUR COMPANY WOULD BE UNDER PUBLIC REGULATION.

PENNA.'S PUBLIC UTILITIES ARE REGULATED BY THE STATE. THE CHARACTER OF THE SERVICE FURNISHED; THE RATES CHARGED FOR THAT SERVICE, THE SECURITIES ISSUED TO PROVIDE THE NECESSARY CAPITAL—ALL ARE SUBJECT TO THE JURISDICTION OF THE PUBLIC SERVICE COMMISSION.

THE VERY EXISTENCE OF A MODERN COMMUNITY DEPENDS UPON SERVICE RENDERED BY PUBLIC UTILITIES. UNDER PUBLIC REGULATION, WISELY AND JUSTLY ADMINISTERED, THE INTERESTS OF THE PUBLIC UTILITY AND THE PUBLIC SERVED ARE ADEQUATELY SAFEGUARDED.

PENN CENTRAL LIGHT & POWER CO.
PATTON, PA.

TRAFFIC IS HEAVY ON WILLIAM PENN

Though the William Penn Highway from Munday's to Harrisville was only opened a week ago traffic from the east through Ebersburg has almost doubled. The number of cars passing through the county seat daily is expected to increase as the motorists learn of the shorter and much better route east and west across the state. Most of the traffic he past few days has been bound east.

The William Penn Highway through this section is on the route of the Pike's Peak ocean to ocean highway, and being on a national route is a novelty to Ebersburg. An unusually large number of cars from the far west have passed through there during the past week.

Ebersburg is now the center of the traffic for a number of sections, main highways leading from there to Carrolltown, other northern towns to Cherrytree and off to Patton, to Cresson, Altoona and Johnstown.

Enthusiastic praise for the good roads in this section of the state is heard daily by tourists and local travelers from all sections, with the exception of the severe criticism voiced against the condition of Middle avenue leading into Johnstown.

Residents of the north of the county are working hard for the two miles of highway between Chest Springs and Ashville to give them a more direct route into Altoona, but the improvement this summer of the Buckhorn and old mountain road, now the William Penn, from Loretto to a point two and one half miles west of Duncanville, will provide good routes from the north and south to the railroad town.

STINEMAN MINERS ARE OUT ON STRIKE

Refusing to accept a wage reduction cutting their wages about 20 per cent, between 500 and 600 men employed by the Stineman Coal Mining Company and Stineman Coal and Coke Company at South Fork, are out on strike. Notices announcing a general wage reduction were posted June 27th at the Stineman mines Nos. 1, 2 and 4. The new wage scale became effective July 1. It was claimed the reduction was necessary in view of the dull market for coal.

Following the announcement of a new wage scale the union miners employed by the Stineman interests held a meeting and voted to go on strike. This is the first trouble of this kind at South Fork since the strike about two years ago.

It was stated at the Stineman offices that the mines had worked thirteen days for the last half of June. The Stineman miners had been working an average of four and five days for some time past.

The Riverside Coal Mining Company's mine at South Fork is also closed down, but officials state that there is no strike.

AN AUTO ACCIDENT ON CRESSON ROAD

John Hanchak, of Portage, and his two year old daughter are in a serious condition at the Altoona hospital, and Mrs. Samuel Meyers, of Pittsburg, is suffering of a fractured rib and shock as the result of an automobile accident which occurred at seven o'clock Sunday evening near Cresson. Hanchak is in a very serious condition.

Hanchak and his daughter were occupants of a touring car in company with Mr. and Mrs. John Shrevonosky and three children, also of Portage. The machine collided head on with a sedan driven by Mrs. A. B. Rauch, of South Fork, who was accompanied by her husband, several children, and Mrs. Rauch's mother, Mrs. Meyers. The Hanchak car, which was driven by Shrevonosky, according to reports, was completely demolished. The other occupants received painful injuries but were able to return to their homes. Mrs. Meyers was the only occupant of the Rauch car who sustained injuries of a serious nature, although the members of the Rauch family are reported to be suffering from minor lacerations and shock.

John L. Ahles.

John L. Ahles, aged 62, died suddenly of acute indigestion at his residence at the Summit at 1:15 o'clock Friday afternoon. He was employed as a carpenter at the state sanatorium and had been working the day before, apparently in the best of health.

John Leo Ahles was born April 15 1851 at St. Marys, Pa., his parents being the late John and Mary Ahles. He was united in marriage with Miss Lucinda Hlig at Ebersburg in 1883. Surviving are his widow and the following children: Mrs. Ella Noel, of Ebersburg; Lawrence, Edward and Wilfred, of Cresson; Walter, Dyarr; Mrs. Carlilla Harker, Summit; Lawrence, Catherine and Margaret, all at home, one brother, George Ahles, of Ebersburg, and two sisters, Mrs. Frank Hlig and Mrs. George Matzel.

Mr. Ahles served as a school director in Cresson township for several terms and resided there for 22 years. He was a member of St. Aloysius church at the Summit and the funeral services were held there at 9 o'clock on Monday morning. Interment was in the church cemetery.

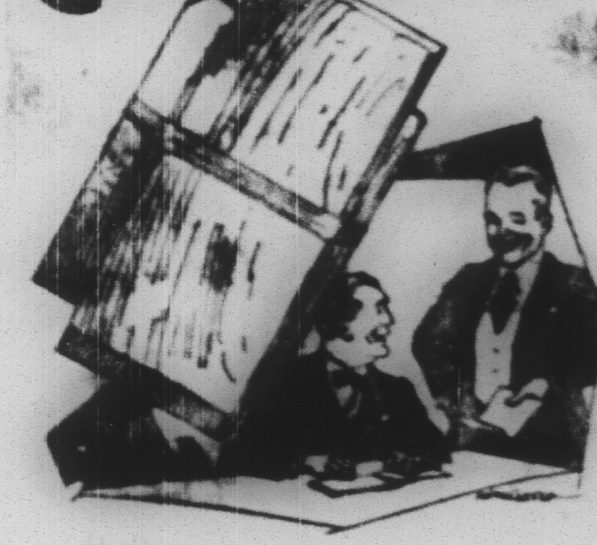
COURAGE LACKING.

"Who don't you wear demure clothes like your grand mother did?" "We might," answered Miss Cayenne, "if grandmother herself had nerve enough to set the example." Washington Star.

THEN HE SHOT HIM.

"He makes his money go farther than any man I ever knew." "Well, some people are born that way." "Yes, he was born in Siberia, and every week he mails his money back home."

Companions



FIRST GET THE MONEY, THEN KEEP IT, IS A GOOD RULE FOR SUCCESS, IF NOT CARRIED TOO FAR. THE MAN WHO MISERLY EXPECTS ALL INCOME AND NO OUTGO, HOWEVER, USUALLY STANDS IN HIS OWN LIGHT. WITH YOUR BANK BOOK FOR DEPOSITS, HAVE ALSO A CHECK BOOK. IT IS SURPRISING, THE GREATER PLEASURE ENJOYED, BY THE MAN WITH A CHECK BOOK. UNCONSCIOUSLY, THOSE WITH WHOM YOU COME IN CONTACT, RATE YOU MORE HIGHLY. THEN, TOO, YOU ARE CONDUCTING YOUR AFFAIRS IN A MOST EFFICIENT MANNER. CANCELED CHECKS ARE RECEIPTS YOU KNOW.

The First National Bank, PATTON, PENNSYLVANIA

W. H. Sandford, Pres. G. E. Prindible, Vice President
F. L. Brown, Cashier F. E. Farabaugh, Vice President
Total Resources \$2,000,000.00
Capital Paid Up \$ 100,000.00
Surplus Earned \$ 100,000.00

ROLL OF HONOR BANK