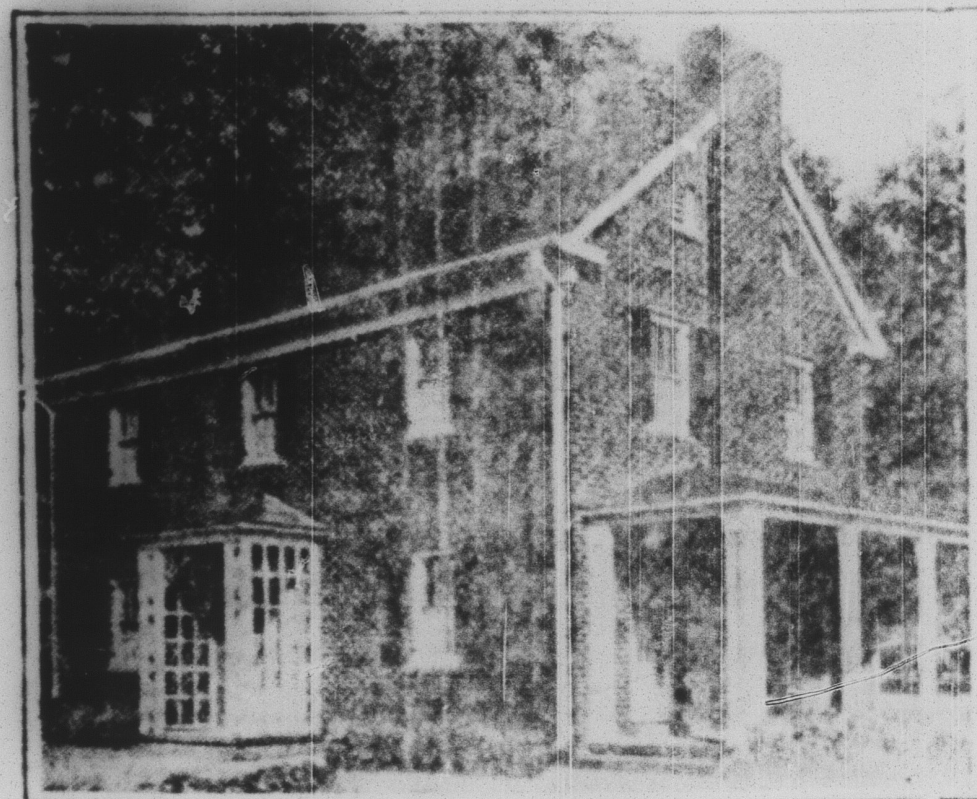
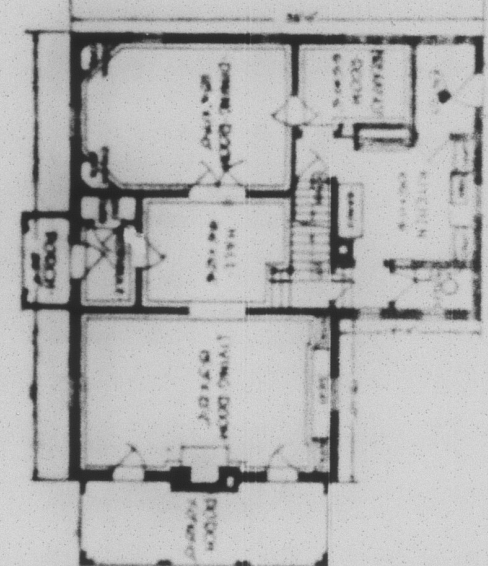


LITTLE UPKEEP REQUIRED HERE



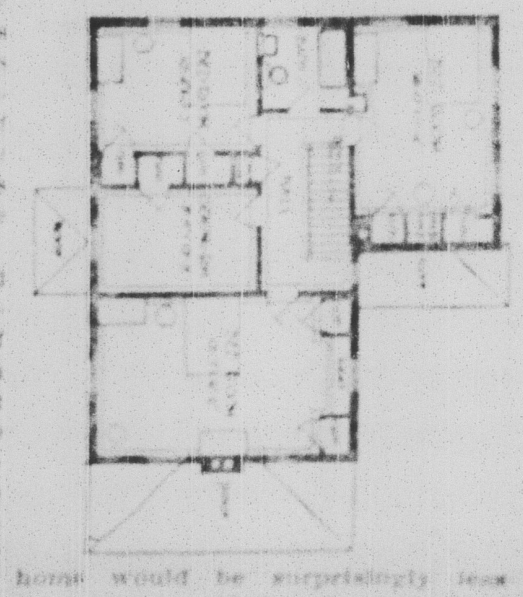
THE SAQUOIT—DESIGN A711

Maintenance cost begins with a low price. The brick house, great many modern day houses are built with stone, the minimum of for the first year. Thereafter, if deterioration is guaranteed always never ceases, usually increasing and the only difference in cost be more or less as time goes on. In town the brick house and the fact the life of the house, and more frame in the wall construction, especially its good appearance, does not mean that is negligible. Windows and roof cost the same, as does also all the interior construction and finish, and the foundations.



This brick house is delightfully planned. Inside the entrance with the latticed porch is a vestibule with a convenient coat closet. The hall is spacious, with entries to both dining and living room, the latter extending completely across one end of the house. A pretty little breakfast room and large kitchen are on the east. Upstairs are three comfortably sized bedrooms, a sitting room and bath. The closets are conveniently placed and ample. Altogether it is an ideal home.

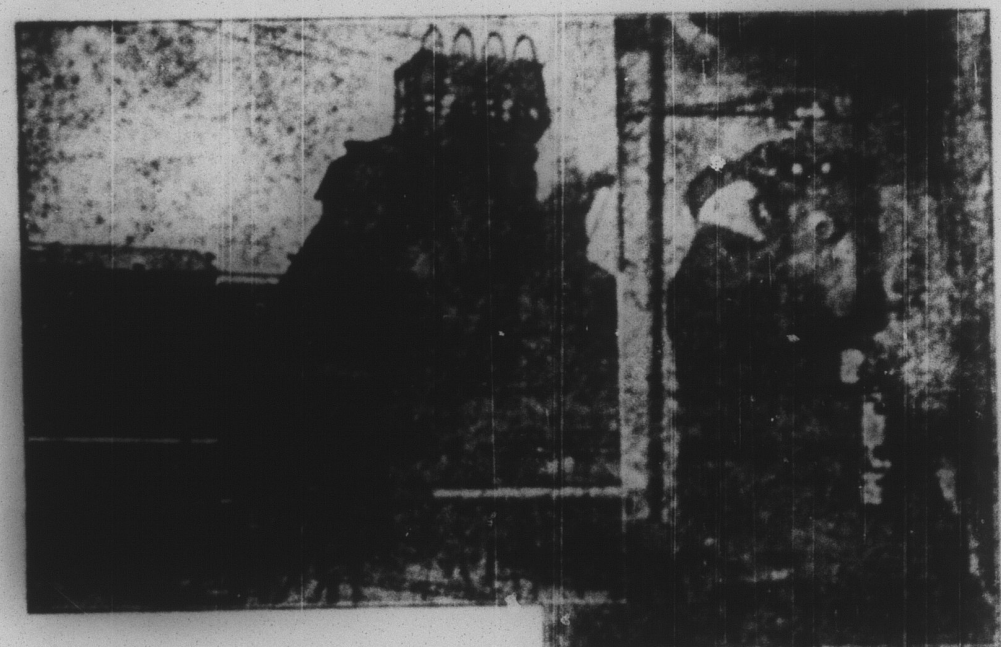
pend largely upon just how watchful the owner may be, and his promptness in making the repairs found to be necessary. Glaring evidence of neglect on the part of home owners, with a consequent decrease of sales values, is always apparent on every hand. You see this every day on every hand. Prospective home builders should give full consideration to this feature in deciding upon the type of construction they are to use in their new homes. The initial cost of building today is sufficient to cause the average family to postpone their new home venture much longer than they should. It becomes, therefore, more and more advisable to insure the lowest possible cost of the house.



Interioration always begins first its ultimate satisfaction from every with the exterior. The outer walls, chimney, doors, windows, and the roof, the porch and the walk.

home would be surprisingly less than you would imagine. And of the exterior, the outer walls, chimney, doors, windows, and the roof, the porch and the walk.

TELEPHONE AN AGENT IN FILLING FAMILY COAL BIN, SAYS OFFICIAL



Left—Hollenback Coal Colliery No. 2, Wilkes-Barre, Pa. Right—inside Foreman Reese Jones using the telephone at the 940-foot level.

Hollenback Coal Colliery No. 2, a property of the Lehigh and Wilkes-Barre Coal Company in Wilkes-Barre, is equipped with a system of telephones that is a great boon to the miner in the removal of coal from the bowels of the earth, according to J. B. Tanslyn, Mine Superintendent of the Colliery.

Hidden away behind abutting walls, installed in out of the way subterranean offices and manifesting their presence in the rambling and winding underground burrows, these telephones keep the Superintendent in touch with the work in all parts of the mine.

In addition to the general communication that ties together all mine sections just as a village of similar size on the surface is interconnected, the telephone, if there is an emergency, is invaluable.

Not only does it afford speed in removing the victims of accidents which continually have been reduced in the diligence and care of mining officials to the vanishing point, but it serves in case of minor emergencies. For example, the telephone is used as a substitute in case of the failure of the electric bell that signals the hoisting engineer when a loaded bucket is to be fitted to the surface. In some

EVERY PENNSYLVANIA COMMUNITY TO HELP ORPHANS OF VETERANS

Former Governor Sproul, Chairman of American Legion Endowment Fund, Issues Appeal for Everyone's Support This Week of Movement to Aid Disabled and Helpless Babies of Former Service Men.



WILLIAM C. SPROUL
Former Governor and Chairman of the Pennsylvania State Committee of the American Legion Endowment Fund for Disabled Veterans and Orphans of Former Service Men.

The community is expected to do its part this week in the raising of Pennsylvania's share of the national \$5,000,000 American Legion endowment fund which will permanently provide for the care and assistance of disabled world war veterans and provide for the care of the helpless babies of former service men.

The state has been thoroughly organized under the leadership of former Governor William C. Sproul for the intensive campaign of solicitation that began Monday. Early returns indicate that every Pennsylvanian who understands the needs and purposes of the fund has given his support to the fund.

Sproul Issues Appeal
Ex-Gov. Sproul, chairman of the state committee of the endowment fund, has issued an appeal for donations.

"While the American Legion began this movement, it is not a Legion undertaking, strictly speaking," the chairman said. "Everyone who believes that the disabled veterans and the 35,000 war orphans of the country deserve a square deal should take part in the endeavor. The task is a large one which challenges the co-operation and help of everyone."

"The establishment of this fund will mean that a permanent source of income will be available for the aid of the two classes in America who suffered the most by the war, and who are today suffering. These are the men for whom no armistice has come and the children who have been deprived of paternal care and now face disease, poverty and possible crime."

Government Cooperates
"The Legion has carried this burden without knowing from time to time how the financing could be obtained. Always working in close cooperation with government agencies, this splendid organization has helped thousands of men to obtain government compensation and hospitalization.

"There remain many more thousands who need this help today, men who are beginning to break now after a few years' long fight against disease contracted in the service of their flag. I know that this state will make a record in subscribing to the endowment fund. It will if everyone does his part."

J. Mitchell Chase, State Commander of the Legion, issued the following statement as the campaign this week opened.

"No Pennsylvanian will fail to respond to this undertaking when acquainted with the needs of the endowment fund.

Means Square Deal
"Before seeking subscriptions, it has been necessary to devote some time to an explanation of what the fund means. It means above everything else a square deal for the men who gave up their health in the war, and it means a good home, an education, a mother's care for every helpless orphan of a former service man.

"Could anything be more worthy? Almost every day sees some additional state respond in full with payment of this debt of honor. It is up to Pennsylvania this week, up to you, to your community."

More emphasis is being placed now in the amount of the over-subscription to state quotas than the order in which the various states "go over the top," according to Commander Chase. Many states have had earlier starts for various reasons, and Pennsylvania's standing among the states will be determined by the amount she donates over her quota.

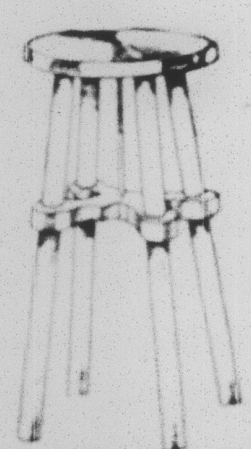
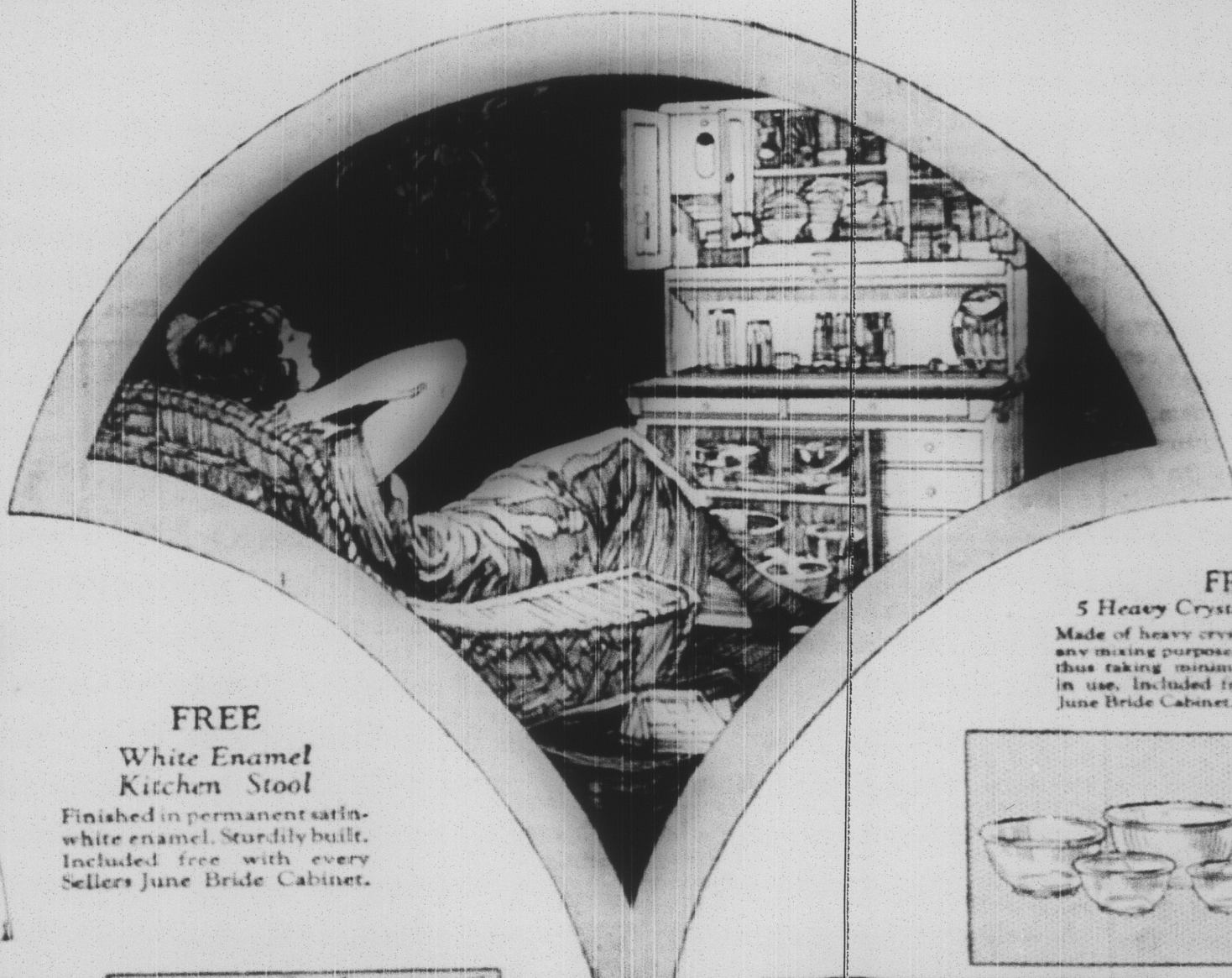
June Bride Sale SELLERS

KITCHEN CABINET

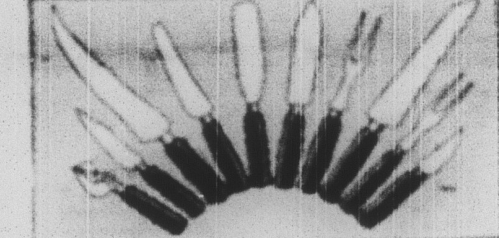
FREE!
ALL THIS EXTRA EQUIPMENT WITH SELLERS JUNE BRIDE CABINET
32-Piece Set of Dishes, Kitchen Stool, 10-Piece Kitchen Tool Sets, 5 Crystal Mixing Bowls
You pay for the cabinet only. All this is free.

ONLY \$1.00 down
PUTS THE SELLERS KITCHEN CABINET AND ALL THIS JUNE BRIDE EQUIPMENT IN YOUR KITCHEN

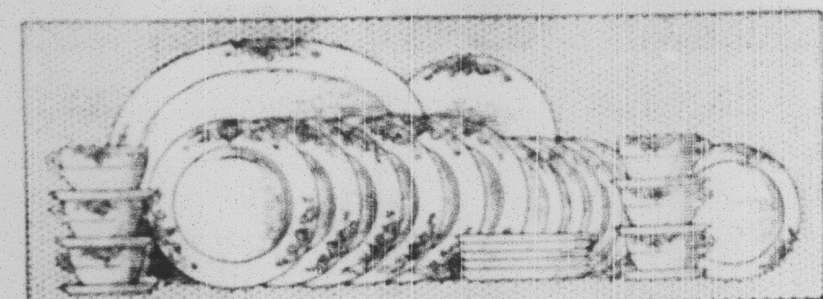
You have a wonderful opportunity to equip your kitchen during our June Bride Sale. With each Sellers June Bride Cabinet you get without a penny of extra cost a fine set of Dinner China, a 10-Piece set of Kitchen Tools, a Sturdy Kitchen Stool and 5 Crystal Mixing Bowls, all at the low price of the cabinet only. A 10-Piece Cutlery Set and a 11-Piece Glassware set are also included as regular Sellers June Bride Cabinet Equipment. Pay for the Cabinet while you use it on our convenient terms. Get this greatest of all Kitchen conveniences in your kitchen now while you can get all this extra equipment free. Come in today.



FREE
White Enamel Kitchen Stool
Finished in permanent satin-white enamel. Sturdily built. Included free with every Sellers June Bride Cabinet.

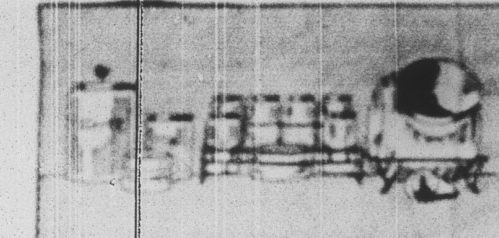


10-Piece Set of Kitchen Cutlery
Regular June Bride Cabinet Equipment
Toned and approved by Good Housekeeping Institute. Every piece individually guaranteed. Any piece found defective will be replaced.

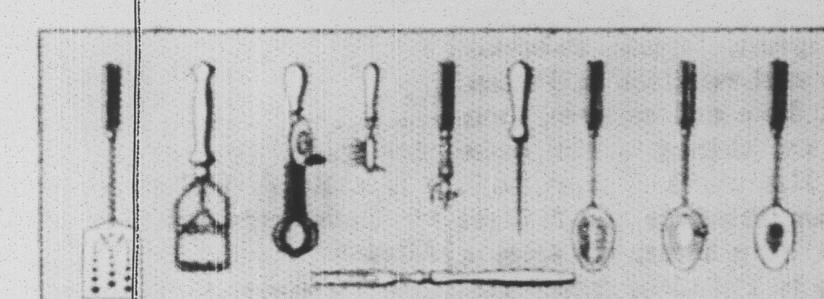


32-Piece Set of Dinner China FREE
If you buy your Sellers June Bride Cabinet now, you get this 32-piece set of Dinner China without cost. Includes Plates, Saucers, Plates, Bread and Butters, Fruit Dishes, Vegetable Dish and Platter—enough to set the table for six persons.

FREE
5 Heavy Crystal Mixing Bowls
Made of heavy crystal glass. Suitable for any mixing purpose. Bowls can be nested thus taking minimum space when not in use. Included free with every Sellers June Bride Cabinet.



11-Piece Set of Glassware
Regular June Bride Cabinet Equipment
Metal Bases to hold set also included. One set furnished with each Sellers June Bride Cabinet.



10-Piece Set of Kitchen Tools FREE
Handle white enamel finish. Bodies are made of pressed steel. Very practical and attractive set. Included free with every Sellers June Bride Cabinet.

ONE WEEK ONLY THIS AMAZING OFFER FOR ONE WEEK ONLY, ITS TOO UNUSUAL AN OFFER FOR YOU TO OVERLOOK. Come in early TOMORROW.

BUCK'S

SOUTH 5TH. AVE. PATTON, PA.

Fair Exposition At Ebsenburg to Be Great Event

Entertainment Never Before Equalled in Extent and Quality Is Arranged.

FOUR DAYS OF NEXT WEEK

Ebsenburg, June 24—Entertainment never before equalled in extent and quality in this section of the state will be seen at the great Cambria County Industrial Exposition to be held at the Ebsenburg Fair Grounds from Wednesday, July 2 to Saturday, July 6, under the auspices of the Cambria County Fair Association.

The extensive million dollar Fair Grounds will be crowded to capacity with entertainment features of all sorts. The fair management has booked so many attractions, and the number of local and national exhibitors will have so many features in their exhibits, that the thousands expected

here for the exposition will find more than enough to bring them back for each of the four days of extraordinary entertainment.

The Matthew J. Riley Shows, one of the best circus attractions on the road, will be here for the four days of the exposition. The shows will occupy the large midway and will provide entertainment every minute of the afternoon and evening.

As a special added feature arranged by the Fair management the Worth Hamel Shows of New York City will put on six stellar acts every afternoon and evening in front of the grand stand. These acts will be free of charge, except that admission will be charged to the grandstand on Friday and Saturday afternoons for the horse races.

For the opening day, in addition to the Riley shows and the free acts, there will be a first and meet, bringing together most of the crack race teams in this section, and providing a most interesting entertainment in connection with a wonderful exhibit the Federal Bureau of Mines will have in the exposition, and many

exhibits of mine manufactory concern.

Wednesday and Thursday there will be a horse show. The best saddle horses in this section of the state are entered in this show, the first of its kind ever attempted in Cambria County.

As special attractions for Friday and Saturday, Manager Ira Bloom has arranged an unusually good horse racing program. A large number of the best horses from this and other states will be entered for the first big race meet of the season.

A record breaking crowd is expected here for the Fourth of July, the Cambria County Fair Association furnishing the really big Independence Day demonstration not only for this county, but for this entire section of the state. Ebsenburg will be the place to spend the Fourth. There will be entertainment indoors and outdoors, for young and old, coming to a glorious close Saturday night with a monster fireworks display. The William Penn highway will be open from Pittsburgh through Ebsenburg for the

Fourth and good roads lead directly to the fair grounds from other sections, where cars may be parked under one of the best parking systems in the country.

National and local exhibits, filling to capacity every available space in the many large buildings on the Fair Grounds, will provide as much of not more entertainment than the many other features. Most interesting mine machinery will be seen in action; the Pennsylvania Railroad will operate a complete railroad system; Bethlehem and Lorain Steel Company will operate mills, and the former company will show moving pictures of its big operations. Both the Westinghouse and General Electric will be here, both of them featuring the radio; the International Harvester Company and others will have exhibits seen only at the largest industrial fairs in the country.

A gate prize, worth \$100, will be awarded each day of the huge entertainment.

Read the ads. They pay you well.

SUBSCRIBE for the COURIER