

# FIRE!

## NOT HERE LET'S HOPE

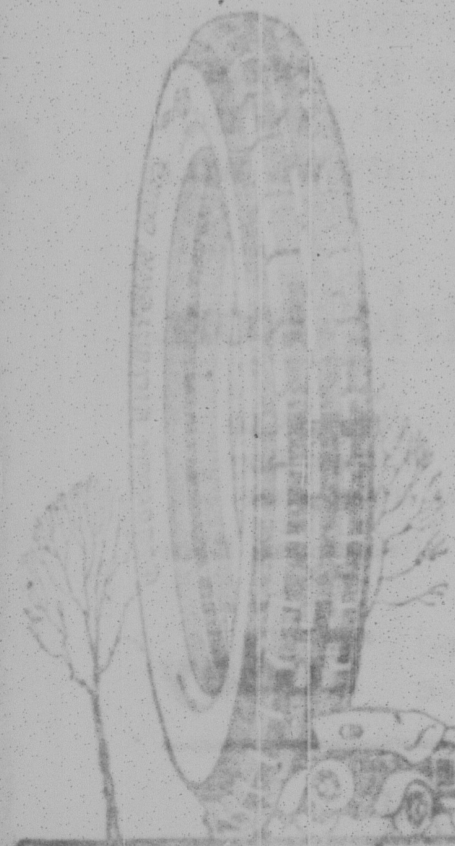
But one of the greatest Fire pictures ever produced will be shown at the

# GRAND June 14 - 15

## "The Third Alarm"

BENEFIT OF  
PATTON FIRE CO. NO. 1.

There's no doubt about it!



Silvertown Cords are the finest value you can buy in tires. They go farther. They look smarter on a car. They make the car ride easier. They save gasoline. This season equip with Silvertown and save money.

C. & B. MOTOR COMPANY  
PATTON, PA.

BEST IN THE LONG RUN

# Goodrich

Silvertown Cord Tire

## THE PATTON DRUG CO.

Dr. Ira Davis, Manager  
Prescriptions a Specialty. A full line of Drugs, Patent Medicines, etc. etc.

Grange Bank Building, Magee Avenue



GOODYEAR believes there are two factors to low-cost mileage—a quality tire and conscientious dealer service to back it up. Goodyear makes that kind of tire, and we have pledged ourselves, as the Goodyear Dealers in this town, to give you that kind of service.

Goodyear Service Station  
Dietrich Bros. Garage  
Patton Auto Company

GOODYEAR

### Agents Wanted.

The J. B. Watkins Company will employ a lady or gentleman agent in Patton. Watkins Products are known everywhere and our sales people make big incomes. Investigate this opportunity. Full particulars and valuable samples sent free. To dealers who mean business. Write today. The J. B. Watkins Company, Dept. 88, New York, N. Y.

### For Sale.

Farm of 35 1/2 acres two miles east of Patton in Clearfield township just at the end of the paved road. Large house, eight rooms and barn, both in good condition. Other outbuildings. Good well water at the house, also an excellent spring nearby. A stream of water traverses said farm. About twenty acres of fair sized timber. Farm land in fair condition. All land under cultivation is planted or ready to be. Winter crops in good condition. This farm is suitable for a country estate, being beautifully located two miles from Patton. Will make a fine poultry or hog farm. Arrangements can be made to buy coal if purchaser so desires. Will sell for a reasonable price. Make inquiries within the next two weeks of P. E. YAHNER, R. D. Box 234, Patton, Pa.

### Notice.

There will be a meeting of the School Board of Clearfield Township on Saturday, June 2nd, at 2 o'clock for the purpose of electing the teachers for the school term of 1923-24. By Order of the Board of Directors, P. G. WEAKLAND, Secretary.

## Beautiful Paint Makes Beautiful Walls

WALLS can be made more beautiful and more sanitary by a coat of Lawrence Dresden Flat, a wall finish, soft, velvety, and durable, good to look at and easy to clean. You may select one of sixteen beautiful tints.

## Lawrence Dresden Flat

BINDER AND STARRETT  
Patton, Pa.



## Raymond D. Buck Funeral Director

Phone, Office  
and Residence

PATTON, PENNA.

### Application Will be Filed in August: Capital Stock Fixed at \$50,000

An application will be filed on August 27, 1923 by Otto Hoffman, Samuel Friedman, L. I. Abrogast, George Baboy, Mike Farnham and Samuel Friedman, trustees, for a charter of an intended corporation to be called "The Vintonville Deposit Bank," to be located in the borough of Vintonville, the object of the corporation being to carry on the business of banking.

### John C. Flick, of Altoona Has Surviving Relatives in Cambria County

John C. Flick, aged 64 years, of Altoona, employed as a flagman by the Pennsylvania Railroad Company who was instantly killed Thursday morning in the St. Michael yard, near South Fork, when he lost his balance while alighting from a coal train and fell underneath the locomotive, was born in Loreto, August 3, 1858. He had been in the railroad service for the past 30 years. Besides his widow and five children, Mr. Flick is survived by the following brothers and sisters: Frank and Demetrius Flick and Mrs. John Cooper, all of Gallitzin; Mrs. Emma Seiber of Loreto; and Miss Alice Flick of Homestead. Funeral services were at 9 o'clock Saturday morning with a solemn high mass of requiem in St. Leo's Catholic Church, Altoona. Burial was made in the Calvary Cemetery, Altoona.

### "Farmers' Day" at State College.

The first annual "Farmers' Day" is to be held at the Pennsylvania State College on Thursday, June 14. This event is planned to take the place of the annual June Farmers Week at the request of the hundreds of farmers who desire to attend the college summer demonstration program, but who find that it is more desirable for them to get away from farm duties for one day than for the several days that were scheduled in the past.

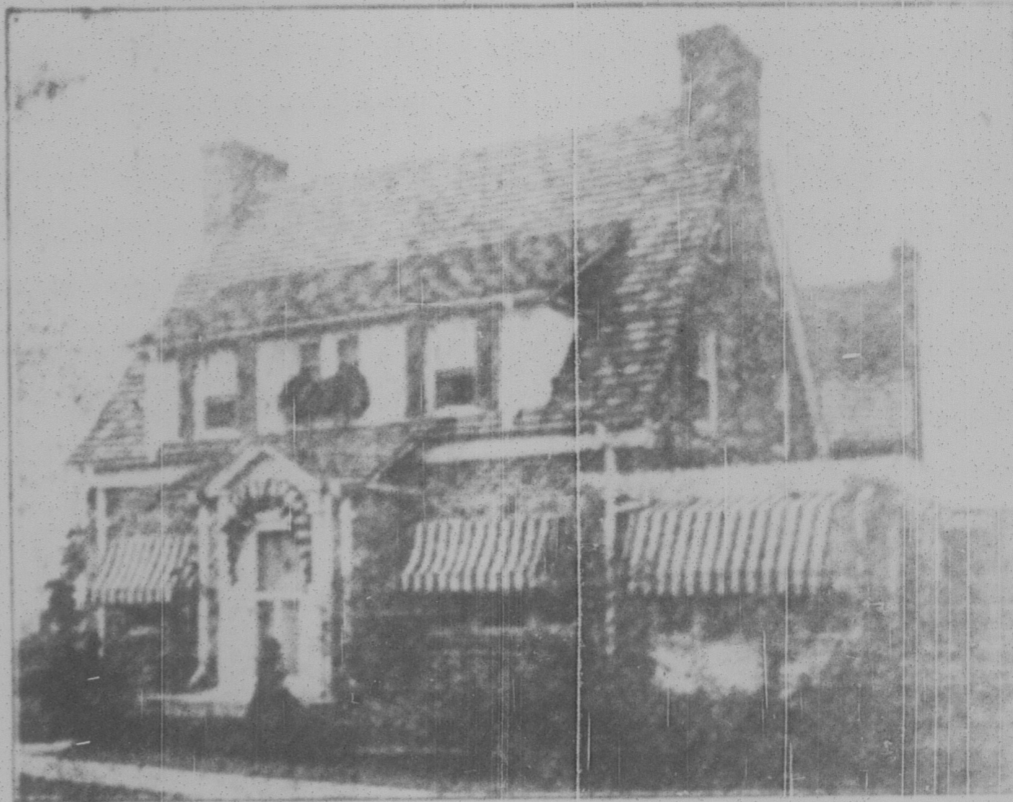
### The date set for the occasion is expected to fall at a time when there will be a slight lull in farm work and when there will be little if any interference with haying. A late spring gives further assurance that it will be possible to have a record-breaking crop of rural folk to visit State College. Many special features are being planned by the School of Agronomy. The event will start with an agricultural program on Wednesday evening, June 13, when State Secretary of Agriculture Willis will speak.

### Judging Contests at College.

State Championship contests in livestock judging for boys and girls and club members of the Young Farmers' Week program to be held at the Pennsylvania State College School of Agriculture, June 12 to 15. In scores of Pennsylvania counties teams are being selected to enter the championships. The classes selected for competition this year include the judging of dairy cattle, general livestock, poultry, swine and a special swine contest.

Contests will be held at one time, one person not being able to enter more than one event; contests will be on a team basis of three members per team; a county can enter one official team in each contest.

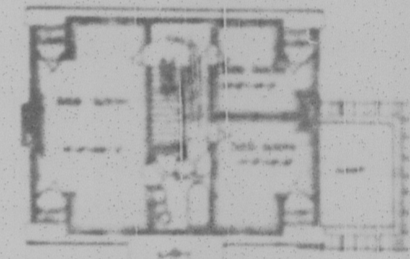
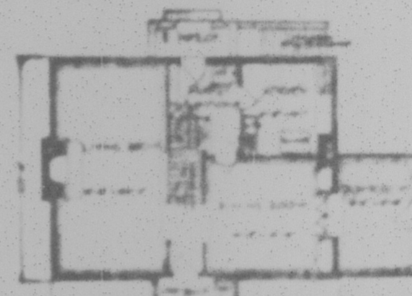
## Brick Home of Beauty



The Hiawatha—Design A 705

Just as a man's exterior appearance is a consequence of his inward ways of thought, even more so it is this time of the house which he builds. The size of the structure and its location may not affect the matters beyond the owner's control. The man of average intellect, however, usually builds a large and expensive house to afford a sort of showy neighborhood. But the matter here is the house 14,300

square feet of the finest brick which was designed by the architect, George E. Benson, of the firm of George E. Benson, Architects, of Pittsburgh. The house is a masterpiece of modern architecture, and its location in the heart of the city is a great advantage. The house is a masterpiece of modern architecture, and its location in the heart of the city is a great advantage.



"SOME drink"

## WHISTLE



Patton Bottling Works, Magee Avenue, Patton, Pa.

## CHICAGO-BOSTON CABLE PROGRESSING

Work on the new Chicago-Boston cable of the American Telephone and Telegraph Company is expected to be completed as far as Chicago Falls, Ill., by May 31. It was announced a few weeks ago by officials of the company. The cable is to be 1,150 miles in length.

## SIX Applicants Refused.

During last Wednesday's session of Naturalization Court at the Courthouse at Ebensburg 92 aliens were given final citizenship papers. Six applicants were refused and 30 applications were continued. Of the six refused two were for insufficient qualifications, three because of their refusal to serve Uncle Sam during the World War and one because of improper moral standards.

## DR. BELL MADE THE FIRST WIRELESS TELEPHONE APPARATUS

Having achieved the distinction of being the first man in the world to discover the way to make the wireless talk, Alexander Graham Bell then proceeded to make the telephone talk without wires. In 1876, the inventor of the telephone, he succeeded in transmitting the speech by means of light rays by the use of telephone apparatus which he called a photophone. This was the first wireless telephone.

Dr. Bell also developed later another type of telephone which he called a thermophone, based on the radiation of heat waves, and with this apparatus he was able to transmit speech for a considerable distance.

## Thirteen new patients were admitted to the State Sanatorium at Ureson, Thursday. There are now 699 patients at the institution.

## TUBE TREASURER BECOMES BANKER

### G. E. Benson Made Officer of Union Trust Company

### HAS CHARGE OF CREDITS

Great Pittsburgh Institution is Completing One of the Finest Banking Rooms in the United States

Announcement is made by H. C. McShaw, President of the Union Trust Company of Pittsburgh, of the fact that George E. Benson, Treasurer and for many years president of the company, has been named as the first vice president of the Union Trust Company in charge of new business and credits, effective June 1. Mr. Benson is widely known not only as a manufacturing and financial expert and his introduction to the banking business will be received with interest.



GEORGE E. BENSON

Mr. Benson was born in Pittsburgh April 24, 1873, and became a resident of Middletown, Pa., in 1891. He attended the public schools there and graduated from the Middletown High School in 1894. Mr. Benson entered the pipe manufacturing business upon leaving school, starting in the office of the American Tube and Iron Company. He remained with that company until 1910 when it was merged with the National Tube Company. He then came to Pittsburgh, becoming identified with the National Tube Company and later with the sales and accounting departments.

Mr. Benson was for two years secretary to William B. Schiller, president of the National Tube Company and in 1910 was made Credit Manager. In 1912 he was made treasurer of the National Tube Company, a position he has since held. The magnificent financial position of this company is in part a tribute to his ability. Mr. Benson is a member of the Pittsburgh Association of Engineers and was the first chairman of the United States Steel Corporation Credit Men serving two years. His work has brought him into touch with bankers in all parts of the United States and his exceptional ability has been recognized.

In addition to being treasurer of the National Tube Company, Mr. Benson is treasurer of the Shelby Steel Tube Company, treasurer and director of the Gary Tube Company, McKeesport Joining and Rolling Company, Bedford and Wheeling Connecting Railroad Company, Lake Terminal Railroad Company, Shelby Land Company and Conspicuous Lumber Company.

Mr. Benson is a member of the De Lussas Club, Union City, Pittsburgh Athletic Association, Young Men's Club, Chamber of Commerce of Pittsburgh and the Civic Club of Allegheny County, in whose activities he has been greatly interested. He is also a member of the South Hills Country Club, Stanton Heights Golf Club and the Youghiogheny Country Club of McKeesport.

The Union Trust Company of Pittsburgh is one of the largest financial institutions in the world, having capital and surplus of \$12,000,000. It has purchased the Union Avenue Building for \$1,000,000 from the estate of H. C. Frick and it is now adding the Fifth Avenue half of this beautiful building to second story of the tower and most modern banking rooms in the United States. One of the largest and strongest safe deposit vaults in the world, with capacity for 30,000 safe deposit boxes is now being completed. The main floor of this vault weighs 100,000 pounds and the vault itself is so large that it is the equivalent in the world, amounting to eight billion dollars, could be stored in it and there would still be room for 50 per cent more. A. W. Mellon, Secretary of the Treasury, was the first president of the Union Trust Company of Pittsburgh.

Each solitary kind of action that is done, the world over, is working briskly to its own sphere to restore the balance between right and wrong.