

J. A. Schwab, Pres. A. O. Somerville, Vice Pres.  
Lester Larimer, Cashier. I. A. Overberger, Asst. Cash'r.  
James Westrick, Vice Pres.

## The Grange National Bank, PATTON, PA.

4 Pct. Paid on Savings Deposits  
3 Per Cent Paid on Time Deposits

**DIRECTORS:**  
J. A. Schwab Dr. P. J. Kelly James Westrick  
T. M. Sheehan A. O. Somerville Lester Larimer  
P. C. Strittmatter Henry Leiden C. J. Noon  
D. A. Luther Leonard Lacue Barth Young

## J. EDWARD STEVENS,

CARROLLTOWN, PA.  
FUNERAL DIRECTOR AND EMBALMER.  
Careful and up-to-date service.  
MODERN EQUIPMENT  
Telephone Service—Office and Residence.

### ROLL OF HONOR BANK

W. H. Sanford, Pres.  
G. E. Prindible, Vice Pres. F. L. Brown, Cashier  
W. F. Mears, Asst. Cashier.

## THE FIRST NATIONAL BANK

PATTON, PENNSYLVANIA.

Total Resources \$2,000,000.00  
Capital paid up \$100,000.00  
Surplus earned \$100,000.00

### The Oldest National Bank in Northern Cambria

ESTABLISHED 1893.

A general banking business transacted. We invite personal interviews or correspondence with firms and individuals wishing to establish or change their banking relations.

3 AND 4 PER CENT. INTEREST PAID ON TIME AND SAVING DEPOSITS.

Steamship Tickets for sale, all leading lines; Foreign Draft and Travelers checks payable in the principle cities of the world.

Safe Deposit Boxes for rent. You should have one or more of our Saving Banks in your home, teaching the children practical lessons in economy.

**DIRECTORS:**  
Geo. E. Prindible Samuel T. Brown  
Reuel Somerville W. L. Thompson  
M. B. Cowder John Ott  
Ralph E. Good F. E. Farabaugh  
Wm. H. Sandford

### NOTICE OF SPECIAL ELECTION

Notice is hereby given to the electors of the School District of Patton Borough, Cambria County, Pennsylvania, in pursuance and by authority of a Resolution of the Board of School Directors of the School District of Patton Borough, Cambria County, Pennsylvania, duly passed and approved on the 3rd, day of April, A. D. 1922; that a special election will be held on Tuesday, the 16th, day of May, A. D. 1922, between the hours of 7 A. M. and 7 P. M. at the Miner's Hall in the First ward, and the Kelly building, on Fifth avenue, in the Second ward of Patton borough, being the places for the holding of general and municipal elections in the Borough of Patton, Pennsylvania, and by the officers provided by law for the holding of general and municipal elections therein; for the purpose of obtaining the assent of the qualified

electors of the said School District of Patton Borough to an increase of the indebtedness of the said school district. The School Board of the School District of Patton Borough, by resolution, passed the 3rd, day of April, 1922, having signed and expressed their desire for such increase of indebtedness.

The following statement is made by the School Board of said School District in pursuance to the Act of Assembly and the amendments thereto in such case made and provided:

1. The amount of the last assessed valuation of taxable property in said school district is \$1,666,580.00  
2. The total amount of the present actual debt of the said school district, ascertained in the manner required by law is 29,150.00  
3. The amount of the proposed increase of indebtedness of said school district is 85,000.00

4. The percentage of the proposed increase of indebtedness of the School District of Patton Borough, (computed under the last assessed valuation thereof) is 5.17 per centum, (5.17%) of the amount of the last preceding assessed valuation of the taxable property of the School District of Patton Borough.

5. The proposed increase of indebtedness of the School District of Patton Borough is for the purpose of using the proceeds thereof in purchasing or acquiring a site or ground and to erect thereon and equip and furnish a new high school building such as is needed and required in said school district, and to make needed and necessary repairs to the First ward public school building in said school district.

The proposed increase of debt is submitted to the qualified voters of the School District of Patton Borough for their approval or rejection in accordance with the Act of Assembly, and the several supplements and amendments thereto in such case made and provided, and in pursuance to a resolution of the School Board of the School District of Patton Borough authorizing the same, and for the purpose aforesaid.

By order of the School Board of the School District of Patton Borough, given this 3rd, day of April, A. D. 1922.

L. G. GORSUCH, President.  
Attest:  
F. L. BROWN, Secretary.

**Eight Divorces Granted.**  
EBENSBURG.—Divorces have been granted by the Court in the following cases:

Nancy Mack Sherman vs. Lester D. Sherman.  
Anne Mary Berkebile vs. Clyde Ira Berkebile.  
John H. Laner vs. Ella Laner.  
Helen Roman vs. Steve Roman.  
Mary I. Morris vs. Sydney R. Morris.  
Michael Kommer vs. Mary Kommer.  
John Mattern vs. Anna Christina Mattern.  
Rudolph Dusza vs. Helen Dusza.

**New School Methods.**  
GROVE CITY.—Two departures in methods of business training have been introduced at Grove City College. Instead of the usual lectures by faculty members, students are called upon each day to give talks on sale methods. In the typewriting department, talking machines are being used to "speed up" dictation.

**Cassandra Woman Observes Birthday.**  
A very pleasant surprise party was held recently at the home of Mrs. Jones Ingoldby, in honor of her 71st birthday. The afternoon and evening were spent in music and games. A very elaborate dinner was served. The guest of honor received many useful presents.

**Letters Lately Issued.**  
Estate of Clara Shugars, late of Johnstown, will probated, no letters issued.  
Estate of Antonio Cozzitorio, late of Patton, will probated and letters issued to Gaetano Mauro, Altono, and Vincenzo Gacto, of Patton.  
Estate of Paul Czura, otherwise Paul Czura, late of Susquehanna Township, will probated and letters issued to Frances Czura, of Barnesboro.

### KODAK FINISHING

Prompt Service  
Your Name for Price List, etc.  
Try Our Enlargements  
M. J. FARABAUGH, Photog.  
CARROLLTOWN, PA.

### Dr. C. I. Baldwin

Dentist  
Palmer House Patton

### REUEL SOMERVILLE.

Attorney-at-Law  
Office in the Good Building

Ask  
Any  
Owl's Board  
Where you  
Can get  
The finest  
Wall Paper  
In town  
And  
Without a doubt  
I'll say  
T-b-a-s'  
Easy  
Just Drop  
In --

## BUCK'S FURNITURE STORE

Patton, Pa.

Estate of Catharine Kirsch, late of Barr Township, will probated and letters issued to Isidor J. Kirsch, of Carrolltown, E. D.  
Estate of James Bell, late of Portage Township, will probated and letters issued to Raymond J. Bell, of Portage.

Estate of Henry A. Fitt, late of Johnstown, renunciation of heirs filed, letters issued to Samuel J. Fitt and John W. Fitt, both of Johnstown.  
Estate of Daniel J. Galitzin, late of Johnstown, letters issued to J. Russell Leach, Esq., Ebensburg.  
Estate of Ignazio Falocco, late of Galitzin, renunciation of widow filed, letters issued to Maria Fellicioni, of Galitzin.

### TIME TO LAY OFF FROM THE RETAILER

If there is any class of people who have been hard hit by the recent change in conditions, it is the retail merchant. We hear much of the distress of the farmer, and the strain the bankers have been laboring under is of knowledge to all. But have you any of any general movement to assist the retail merchant in these times of stress? Yet no line of business has been hit harder than that of the local retail merchant. The man you meet every day and the one who supplies your daily needs.

When the slump in prices came, it was the retail dealers who carried the load. The manufacturers and jobbers were hit hard, it is true, but they were in many cases short of supplies and their loss, while heavy, was not in proportion to the small retail dealer. In spite of this well known fact the retail merchant has not only not come in for any special consideration, but has been heaped with a lot of unmerited abuse.

How many times one has run across such statements as, "wholesale prices have come down but the retail dealers do not seem to have found it out." We have met with this statement in trade journals and business reviews of weekly and daily papers. It has appeared in such a way that many have accepted it as true. Yet if any purchasers of family supplies will compare the prices paid today and those paid two years ago, they will know that it is far from the truth.

During the past year the invoice price of goods on the shelves of the retail merchant has been reduced from 20 to 40 per cent. On a \$20,000 stock this means a loss of from \$4,000 to \$8,000. It means that the merchant has taken a loss of that much on his goods. Is it any wonder that many merchants have been forced to the wall?

What is more, the overhead cost of doing business is greater than it was before the war. Wages of help has not fallen to that of the pre-war period. Rents in many cases are higher and for a long time. All these things combine to make the retail merchant's path a very hard one.

It help comes to the farmer, indirectly it will come to the merchant, but in the meantime he is struggling to keep the business world afloat by making sacrifice sales and taking his loss without any hue and cry. So just remember the local merchant has his troubles and is still your friend—that he is doing his share to bring about better conditions and help the old world back onto its feet.

It will take time, but we believe things are slightly on the upgrade and if everyone will do his part and go to work all will be well. Prosperity will not come to a few. It must come to all and the man who insists on excessive wages while condemning the merchant who is trying to save his business life, is not going to profit by his stand.—Manson, Iowa Journal.

### Will Hold Conference.

LOCK HAVEN.—The State Department of Public Instruction has called a three-day conference of the faculties of all normal schools of the State at the Central State Normal School here beginning April 10. Dr. W. C. Bagley, of Teachers' College, Columbia University, an authority on normal school instruction, is expected to be a speaker. Dr. Thomas E. Finegan, State Superintendent of Public Instruction, Dr. Albert Rowland and other officials of the State Department and at least 100 members of normal school faculties also are expected to attend. At the conference, the first of the kind in Pennsylvania, policies of the State Department will be discussed, close co-operation between the normal schools and the State and between the various normal schools will be sought and it is hoped by the educators greater uniformity of methods will be obtained.

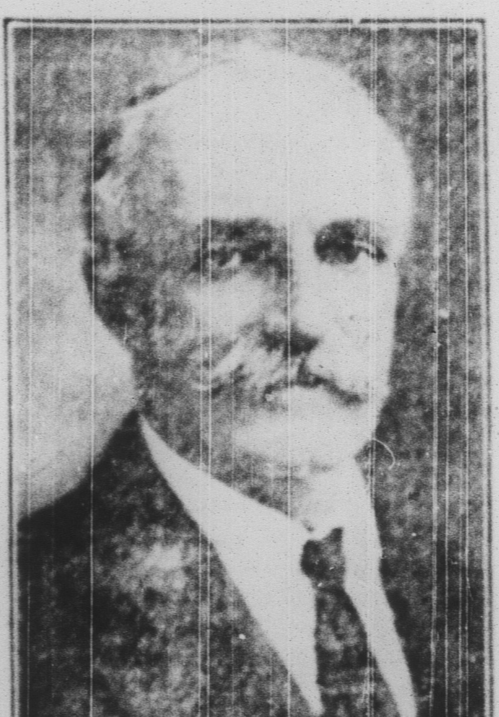
**Jury Disagrees in Koontz Case.**  
EBENSBURG.—The case of Thomas Koontz against the Johnstown Fuel and Supply Company, of Johnstown, which went on trial before Judge John E. Evans last Thursday afternoon, went to jury at 3:30 o'clock Saturday afternoon. After remaining out all of Saturday night and until Sunday morning, having failed to reach a verdict, the jury was dismissed by Judge Evans.

The plaintiff brought action against the defendant company in the sum of \$25,000 for injuries which he alleged he received as the result of an explosion in the basement of his home, 416 Bradley alley, Johnstown, on the morning of November 11 last. He claimed that the explosion was caused by gas accumulating in the cellar of his home, due to the carelessness of the defendant company in not repairing a leak in their gas main.

In Judge Evans' court, Abe Miller, charged with fraudulent conversion, was sentenced to pay the costs, a fine of \$20 and serve six months in jail. George Felschak, 18 years of age, pleaded guilty to entering a building with intent, larceny and receiving stolen goods. He was ordered to pay the costs and further sentence was suspended.

**HOUSE FOR RENT.**—Four rooms, furnished, on Fifth avenue. Call at Dr. V. A. Murray's.

### Gifford Pinchot :



Ex-Chief Forester and Republican candidate for Governor.

### NOTICE OF CLEAN-UP

The Board of Health of Patton Borough requests that all residents gather up all garbage about their premises and place in boxes or barrels before May 1st to 10th, so that the Borough teams can get it and haul it away. All parties not complying with this notice will be dealt with according to law, as the Borough authorities will make a thorough investigation.

### PATTON BOARD OF HEALTH.

### Tanning Plant Burns.

CLEARFIELD.—A part of the plant of the Elk Tanning Company here is in ruins following a fire in the drying and finishing rooms Monday night. Large stocks of finished and unfinished leather were destroyed. The local estimates placed the loss at \$250,000.

### Bank Their Bonus Money

Canton, Ohio.—Forty three per cent of Ohio's ex-servicemen are putting their state bonus money in the bank, a poll of American Legion members at Canton shows.

### PLEASE PAY UP

In addition to the regular monthly statements that will be sent out to patrons of The Courier this week, a large number of subscription statements will also be mailed. The subscription accounts, although small to you, mean a high total to us, and it is essential that they be paid. If you find you are indebted to us, an early remittance by you will be appreciated.

## NEW SPRING CLOTHING

### Young mens Tweed SUITS

BLACK and WHITE  
BROWN and WHITE

**\$25 & \$30**

Mens sport Oxfords in Cordovan and black. \$5.00 to \$7.50  
Mens and boys soft colored shirts, white and tan. \$1.00 to \$2.00

New Spring Stetson Hats. \$7.00  
Other late styles from \$3.00 to 5.00  
Mens and boys Tweed caps. \$1.00 to 2.00

All the newest styles in neckwear 60c to \$1.50  
Other fine grades in Welts. 6.50 to 8.00

## W. L. THOMPSON

Always Reliable, Patton, Pa.

## See Mary Pickford in "The Love Light" at Grand Wednesday

## NATIONAL GINGHAM WEEK

WEEK OF APRIL 24th TO 29th

### BEAUTIFUL GINGHAMS

In hundreds of different patterns and colors are here for you to select from. BATES, TOILLE De NORES, RENFREWS and all the Reliable Standard Makes. PRICED AT 20c 25c 30c 35c yd

The collection is as complete as you could possibly wish for, and the prices as low as we possibly can make them for goods of such reliable quality.

### IMPORTED FINE TEXTURE GINGHAMS

For those who want the very best in fine gingham there is nothing better to be had than these. Dainty fine texture that feels like silk, looks like silk, and yet possesses the wearing qualities that are only to be found in gingham. Wondrously hued patterns, so diversified in colors that one can't help but find both the design and colors wanted.

PRICED AT 39c 50c 69c 79c yd

## Scollon Community Stores,

Barnesboro, Pa.

Merchandise Of Quality Garments Of Quality