

## Patton Personal Briefs

Send Us Every Item You Know, and Help Swell T. W. Department.

Frank Kinkead was on the sick list last week.

A. Aaronson was an Altoona caller last week.

Mrs. Leo Maurer was a Johnstown shopper Tuesday.

C. L. Kelly transacted business in Loretto last Friday.

John Khunley transacted business in Johnstown Saturday.

Ed. Callahan, of Altoona, was a caller in town this week.

Miss Tomazine Holter spent Sunday at her home in Cherry Trees.

Mrs. W. H. Deninger, Sr., was a Sunday visitor at Carrolltown.

Sleighting is better in this section now than it has been for years.

W. F. Ford, of Westover, transacted business in town Saturday.

Samuel T. Brown transacted business in Loretto last Thursday.

Constable Miller, of Barbersboro, transacted business in town this week.

James Westrick, of Hastings, was a Patton business caller Tuesday morning.

Alex Strittmatter, of Bradley Junction, transacted business in town Tuesday.

Joseph Gaglardi, of Carrolltown, was a Sunday visitor among relatives in Patton.

Miss Ora M. Cully, of Westover, was calling on friends in town the first of the week.

Ice houses are being stored this week.

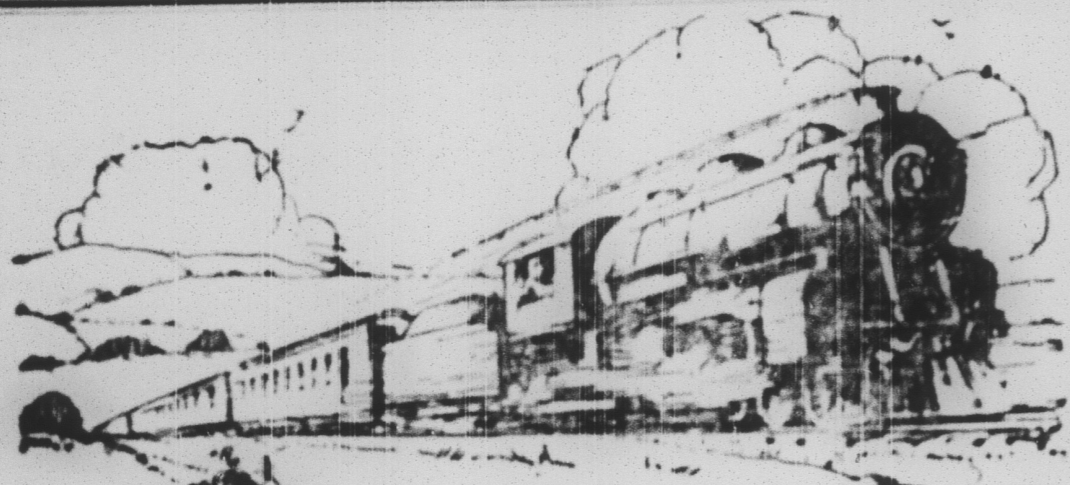
## Keystone Diamond Drilling Company

DRILLERS AND PROSPECTORS

PATTON, PA.

Two drills now in operation in this vicinity. Correspondence Solicited.

Offices in Good Building, Patton, Pa.



A vast amount of work now remains to be done, which the intervention of war has necessarily delayed and postponed. It is the duty of the railroad to make up for the delay by expending money to be made to make up for the delay. It is the duty of the railroad to make up for the delay by expending money to be made to make up for the delay.

Work more—  
Produce more—  
Save more—

But we can't continue increasing our production unless we continue increasing our railroad facilities.

The farms, mines and factories cannot increase their output beyond the capacity of the railroads to haul their products.

Railroads are now near the peak of their carrying capacity.

Without railroad expansion—more engines, more cars, more tracks, more terminals—there can be little increase in production.

But this country of ours is going to keep right on growing—and the railroads must grow with it.

To command in the investment markets the flow of new capital to expand railroad facilities—and so increase production—there must be public confidence in the future earning power of railroads.

The nation's business can grow only as fast as the railroads grow.

This advertisement is published by the Association of Railway Executives

Those desiring information concerning the railroad situation may obtain literature by writing to the Association of Railway Executives, 61 Broadway, New York.

CHARTER NO. 1857.  
Report of condition of The First National Bank at Patton, Pa., in the State of Pennsylvania, at the close of business on December 31, 1919.

Resources.	
Loans and discounts, including real estate mortgages except those shown in bond and equity	\$592,219.01
Deposits to secure circulation (U. S. bonds)	\$100,000.00
Deposits to secure U. S. bonds	12,500.00
Pledged as collateral for State or other deposits or for other purposes	1,000.00
Owned and pledged securities	7,750.00
Total U. S. Government securities	420,250.00
Bonds (other than U. S. bonds) pledged to secure U. S. deposits	\$10,000.00
Bonds (other than U. S. bonds) pledged to secure postal savings deposits	15,000.00
Securities other than U. S. bonds (not including stocks) owned and pledged	278,087.41
Collateral Trust and other notes of corporations (issued for not less than one year nor more than three years time)	247,885.61
Total bonds, securities, etc.	640,973.02
Stocks other than Federal Reserve Bank stock	23,706.72
Stock of Federal Reserve Bank (50 per cent of subscription)	6,000.00
Furniture and fixtures	5,500.00
Real estate owned other than banking house	1,300.00
Lawful reserve with Federal Reserve Bank	58,695.44
Cash in vault and net amounts due from national banks	61,741.32
Net amounts due from banks, bankers, and trust companies other than included in items 12, 13 or 14	3,265.44
Checks on other banks in the same city or town reporting bank (other than item 15)	972.36
Checks on banks located outside of city or town of reporting bank and other cash items	9,564.86
Endowment fund with U. S. Treasurer and due from U. S. Treasurer	5,000.00
Interest earned but not collected—approximate—on Notes and Bills Receivable not past due	758.04
Total	\$1,872,986.51
Capital stock paid in	\$100,000.00
Surplus fund	100,000.00
Undivided profits	206.65
Interest and discount collected or credited in advance of maturity and not earned—(approximate)	3,244.03
Circulating notes outstanding	97,800.00
Certified checks outstanding	763.63
Cashier's checks on own bank outstanding	3,060.67
Individual deposits subject to check	498,322.63
Dividends unpaid	5,000.00
Other demand deposits	78,415.67
Postal savings deposit	7,295.04
Other time deposits	638,577.18
Bills payable with Federal Reserve Bank	300,000.00
Total	\$1,872,986.51
State of Pennsylvania	
County of Cambria	
I, F. L. BROWN, Cashier of the above-named bank, do solemnly swear that the above statement is true to the best of my knowledge and belief.	
F. L. BROWN, Cashier	
Correct—Attest:	
WM. H. SANDFORD, W. L. THOMPSON, M. B. COWHER, Directors	
Subscribed and sworn to before me this 25th day of January, 1920.	
FRANK C. McCLUNE, Notary Public	
My commission expires April 21, 1921.	

Barney Blankfield, of the firm of Kusner and Blankfield, has purchased the beautiful W. J. Morgan home on Beech avenue. Mr. Blankfield will move his family to the new home within a few weeks.

Leo Maurer, who recently disposed of his interest in the Maurer Coal company to George S. Good, Jr., moved his offices the first of the week from the Kusner and Blankfield Building to rooms in the Good building.

The Ladies' Aid Society of the M. E. church will hold a cake and food sale in the New Annex of Kusner and Blankfield building next door to the Penn Central, Saturday afternoon and evening. Oyster supper will be served from 5 o'clock onward.

A nation that was able to transport two millions of soldiers overseas for the welfare of democracy will not falter at shipping a few thousand law-defying "Reds" to Russia for the same purposes.—Boston Transcript.

112 Millions used last year to KILL COLDS

HILL'S CASCARA QUININE BROMIDE

Standard cold remedy for 75 years—tablets—easy to use—relieves grip in 24 hours—relieves grip in 3 days—never fails if it fails. The genuine box has a Red top picture of Mr. Hill's picture.

At All Drug Stores

# Bargains! Bargains!! Bargains!!!

## 25 per cent. off ON ALL LADIES' AND CHILDREN'S COATS

In beautiful Velour, Silvertone and Broadcloth materials

We are also offering the same reductions.

# 25 PER CENT. OFF ON ALL FURS

Among these are found genuine Lynx, Skunk and Brown and Taupe Fox Scarfs.

# A. GOLDMAN PATTON, PA.

children and great-grandparents of Rev. P. Thomas Wolfe, O. S. B., P. Lawrence, O. S. B., of this place and Rev. P. P. Cozzoran, of Spangier. At 12 o'clock an elaborate dinner was served, which was enjoyed by the number of 58. Three guests at this large assemblage present.

Mr. and Mrs. Schettig were the recipients of many valuable gifts and tending the ceremony 50 years ago. They are both among the honored guests were joying excellent health.

## Raise Your Own Chickens and Save Money

At the present time when the price of poultry and eggs are so high everyone should realize the importance of raising their own chickens.

Before the War the yearly production of eggs amounted to over 1,500,000,000. But this was greatly diminished during the long period of the War, thus causing an increase in the price of eggs, so that it is a duty of every farmer, not only to the United States, but to himself, to raise poultry and produce eggs.

Eggs at 80c a dozen gives the poultryman a large profit and you can get your share of it by raising your own chickens and producing your own eggs.

A flock of good layers is a good gold mine to anyone.

RAISE CHICKENS AND GET YOUR SHARE OF IT

# Binder & Starrett, HARDWARE PATTON, PENNA.